

ព្រះរាជាណាចក្រកម្ពុជា
KINGDOM OF CAMBODIA
ជាតិ សាសនា ព្រះមហាក្សត្រ
NATION RELIGION KING



ធនាគារជាតិ នៃ កម្ពុជា
NATIONAL BANK OF CAMBODIA

ព័ត៌មានស្ថិតិសេដ្ឋកិច្ច និងរូបិយវត្ថុ
ECONOMIC AND MONETARY STATISTICS

លេខ ៣០៨- ឆ្នាំទី២៧
ខែមិថុនា ឆ្នាំ២០១៩
SERIES No. 308-27th YEAR
JUNE 2019

Contents



Page

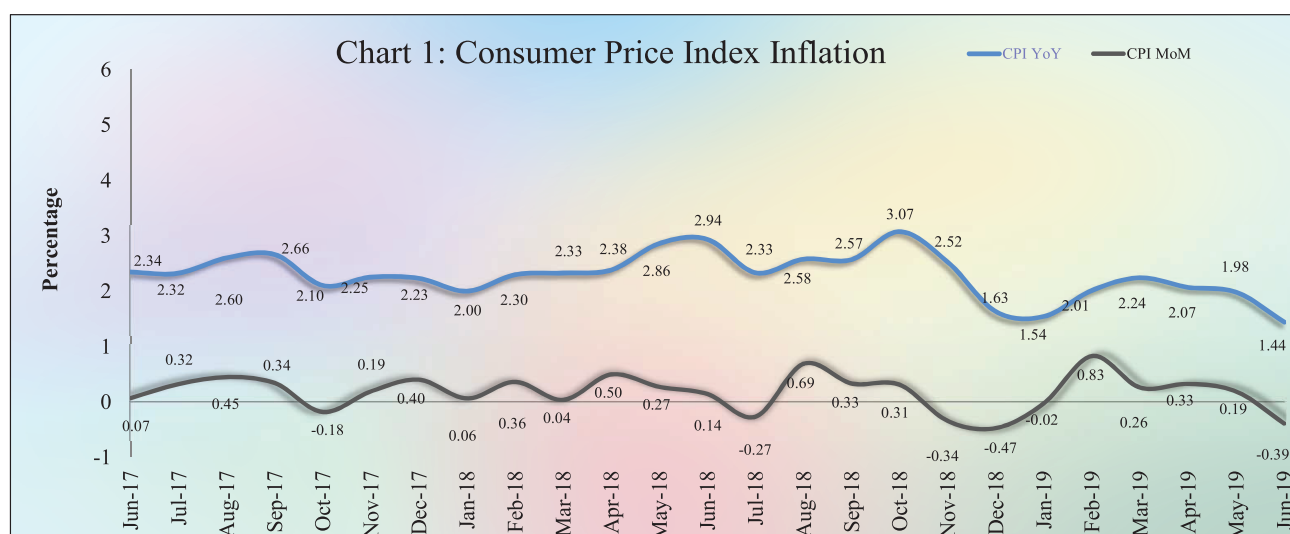
- Introduction	1
- Consumer Price Index	1
- Exchange Rate	1
- Money Supply	2
- Net Domestic Assets of the Banking Sector	2
- Net Foreign Assets of the Banking Sector	2
- Deposit Money Banks' Operations.....	3
- Interest Rates on Loans and Deposits.....	3
- Foreign Tourist Arrivals.....	4
- International Trade in Goods	5
Table 1 : Consumer Price Index and Inflation Rate.....	6
Table 2 : Consumer Items Showing Price decreased in June 2019.....	7
Chart 1 : Consumer Price Index.....	8
Chart 2 : Weight of All Group Indices in Consumer Basket	8
Table 3 : Gross Domestic Product	9
Chart 3 : GDP by Economic Activity (At Constant 2000 Prices)	9
Chart 4 : GDP by Economic Activity (At Current Prices).....	9
Table 4 : Approved Investment Projects by Sectors	10
Chart 5 : Investment Fixed Assets by Sectors	10
Chart 6 : Numbers of Investment Projects by Sectors	10
Table 5 : Approved Investment Projects by Major Countries	11
Table 6 : Daily Exchange Rate in June 2019 (KHR/USD).....	12
Table 7 : Monthly Exchange Rate (KHR/USD, End-Period).....	13
Chart 7 : Trend of Monthly Exchange Rate.....	13
Table 8 : The Value of KHR Against Other Currencies (Official Buying Rates, End-Period)	14
Table 9 : Deposit Money Bank's Interest Rates on Deposits and Loans in KHR	15
Table 10 : Deposit Money Bank's Interest Rates on Deposits and Loans in US Dollar.....	16
Table 11 : Monetary Survey	17
Table 12 : Monetary Survey (Monthly Change)	18
Chart 8 : Monetary Survey	19
Chart 9 : Components of Money Supply	19
Table 13 : Deposit Money Banks' Balance Sheet	20
Table 14 : National Bank of Cambodia's Balance Sheet.....	21
Table 15 : Credit Granted by Deposit Money Banks Classified by Industry.....	22
Chart 10 : Credit Granted by Deposit Money Banks Classified by Industry.....	22
Table 16 : Monthly Change of Credit Granted by Deposit Money Banks Classified by Industry.....	23
Table 17 : Deposits with Deposit Money Banks	24
Chart 11 : Deposits with Deposit Money Banks Classified by Currency, as of June 2019 (% of Total Deposits).....	24
Table 18 : Monthly Change of Deposits with Deposit Money Banks.....	25
Chart 12 : Deposits in KHR Classified by Type, as of June 2019 (% of Total KHR Deposits).....	26
Chart 13 : Deposits in Foreign Currency Classified by Type, as of June 2019 (% of Total FCD).....	26
Table 19 : Credit Granted by Micro-Finance Institutions and Non-Government Organizations	27
Table 20 : KHR-Denominated Checks Clearing Through Clearing House.....	28
Table 21 : USD-Denominated Checks Clearing Through Clearing House.....	29
Table 22 : Visitor Arrivals in Cambodia	30
Table 23 : Cambodia's Imports and Exports	31
Table 24 : The Banking System in Cambodia.....	32-33

Introduction

Overall consumer price inflation in June 2019 declined to the negative level compared to the previous month; while the Khmer Riel (KHR) continued to be depreciated against US dollar. During this period, financial intermediation of the banking sector reflecting through credit to private sectors and resident's deposits continued to increase. At the same time, the international trade in goods showed a decrease in deficit.

Consumer Price Index

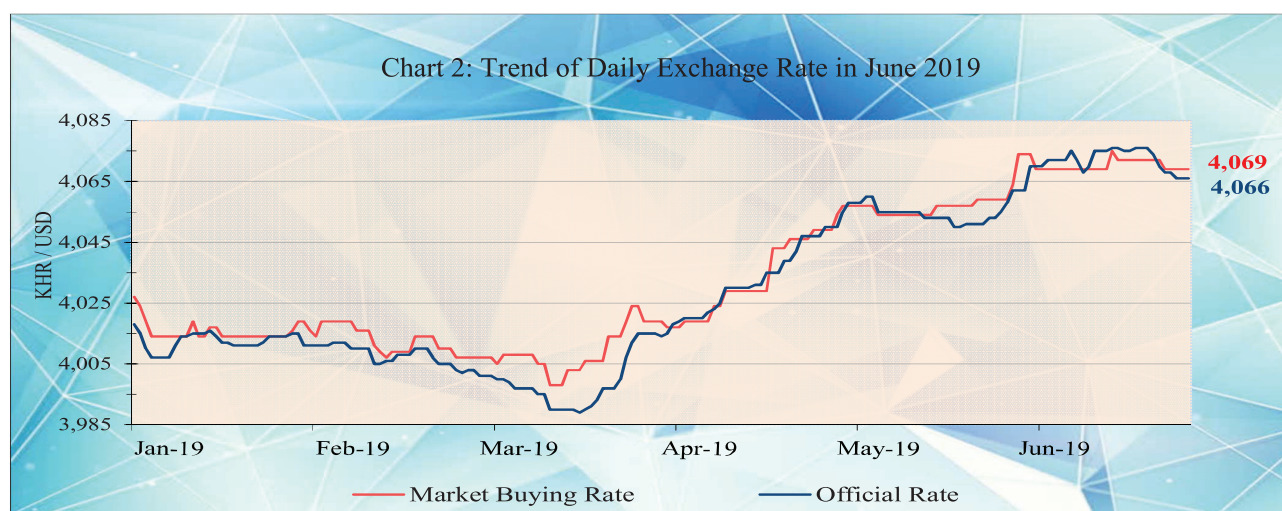
The consumer price inflation in Phnom Penh (month-on-month) declined to the negative level of -0.39% in June 2019 from 0.19% in May, of which six out of twelve group indexes decreased while five group indexes increased and other one group index remained stable.



During the same period, the year-on-year percentage change of the CPI for all items eased to 1.44% from 1.98% in May 2019 mainly due to a decrease in oil prices contributed with lower hike in food price.

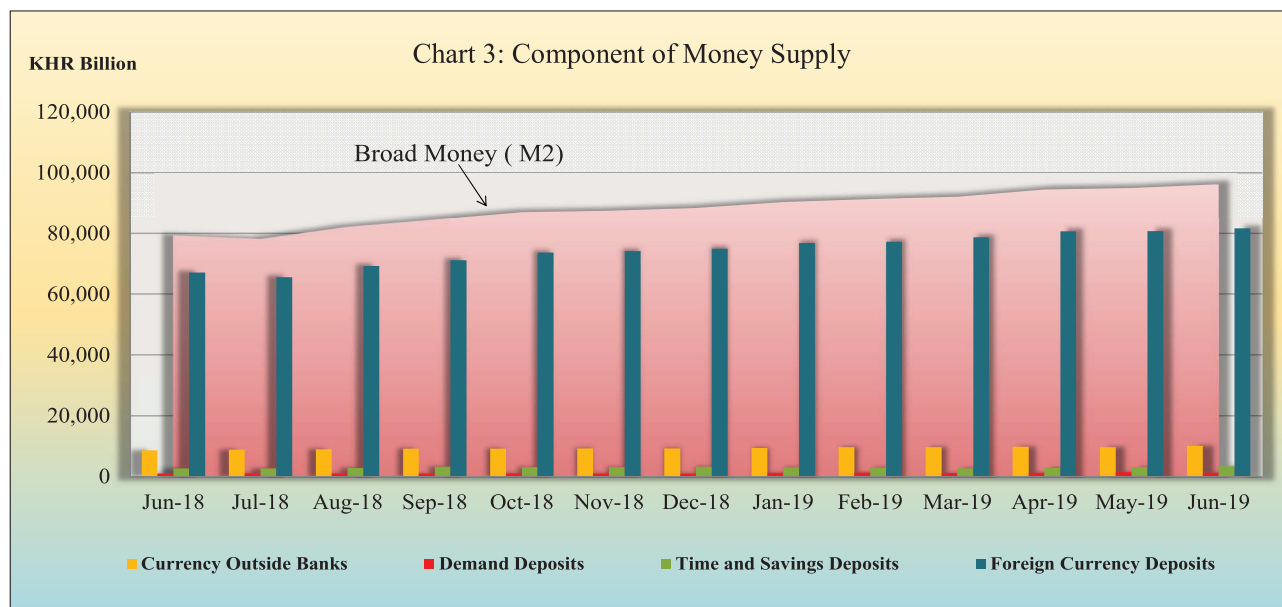
Exchange Rate

The exchange rate (market buying rate) was KHR 4,069 per USD in June 2019, depreciated by 0.12%, compared to May. This was mainly due to the effect of seasonal factor.



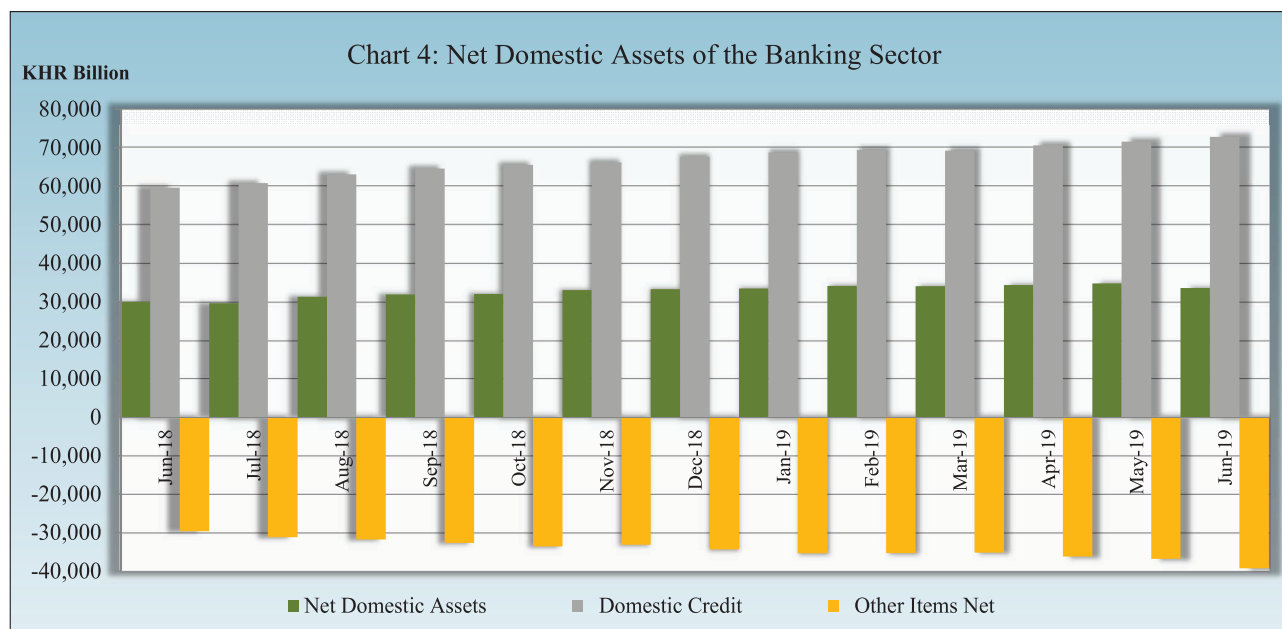
Money Supply

Broad money (M2) continued to increase to KHR 96,247.6 billion in June 2019, up by 1.4% compared to May. Main components of M2 showed that time and saving deposits, currency outside banks, and resident's foreign currency deposits increased by 7.8%, 3.4%, and 1.1%, respectively while demand deposits declined by 10.5%.



Net Domestic Assets of the Banking Sector

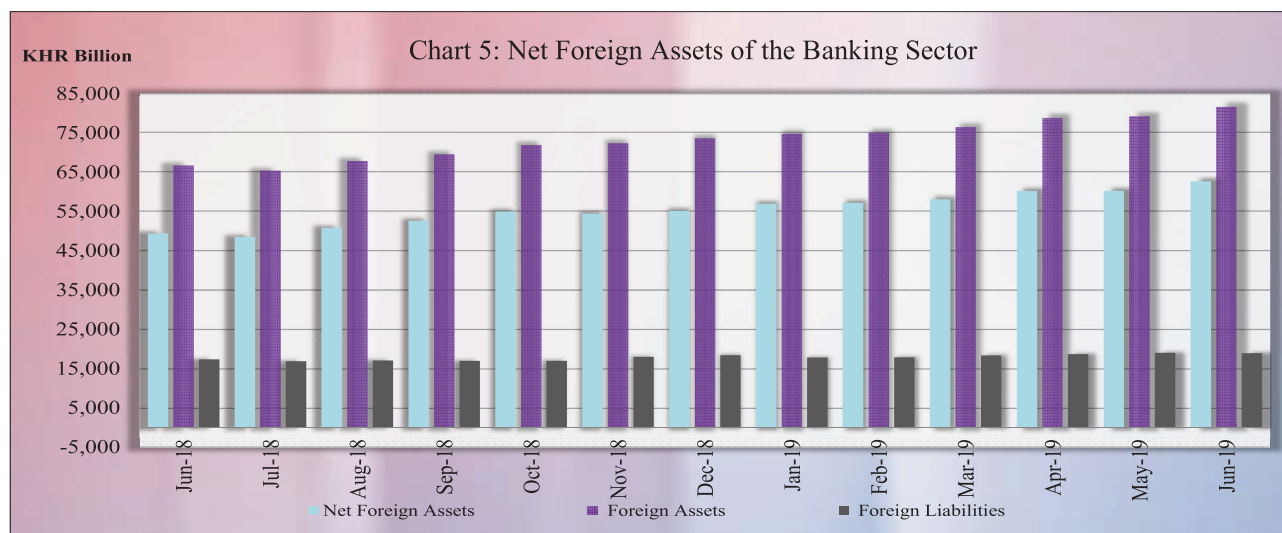
Net domestic assets of the banking sector decreased to KHR 33,548 billion in June 2019, down by 3.4% compared to the previous month. This was due to a decline of 6.6% in other items net while domestic credit increased by 1.8%.



The decrease in other items net was mainly due to an increase of 6.1% in capital and reserves. The increase in domestic credit was mainly due to an increase of 1.7% in credit to private sector whereas net claims on government declined by 1.6% due to an increase in government deposits.

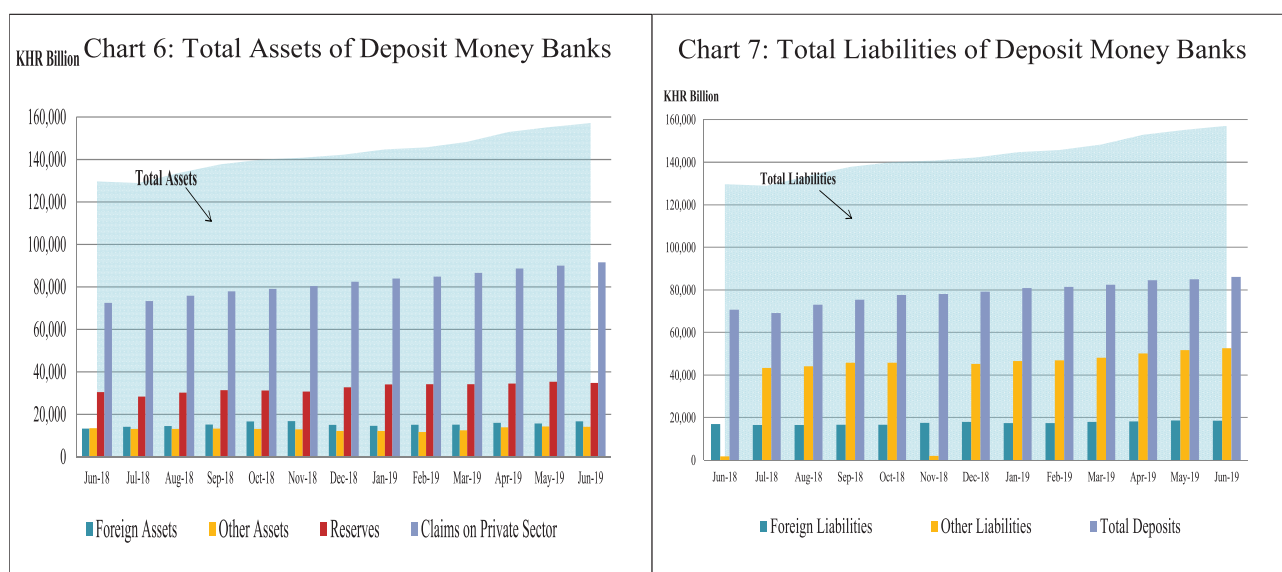
Net Foreign Assets of the Banking Sector

Net foreign assets of the banking sector increase to KHR 62,699.5 billion in June 2019, up by 4.1% from May. This was due an increase in total foreign assets of 3% contributed with the increase of 0.4% in total foreign liabilities.



Deposit Money Banks' Operations

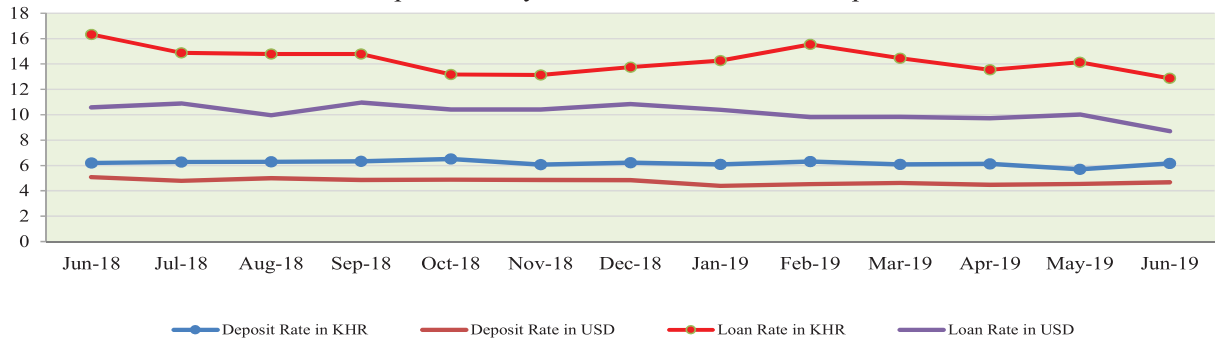
Total assets of commercial banks and specialized banks were KHR 157,159 billion, up by 1.2% in June 2019 compared to the previous month.



Interest Rates on Deposits and Loans

Interest rate movement on deposits and loans of banking sector in June 2019 showed that the weighted average interest rate on deposit with a maturity greater than 9 months to 1 year for Khmer Riel and US dollar increased by 0.45% to 6.15% and 0.12% to 4.67%, respectively. At the same time, the weighted average interest rate on loan to business with a maturity greater than 1 year to 5 years in Khmer Riel and US dollar decreased by 1.28% to 12.87% and 1.31% to 8.7%, respectively.

Chart 8: Deposit Money Banks' Interest Rate on Deposits and Loans

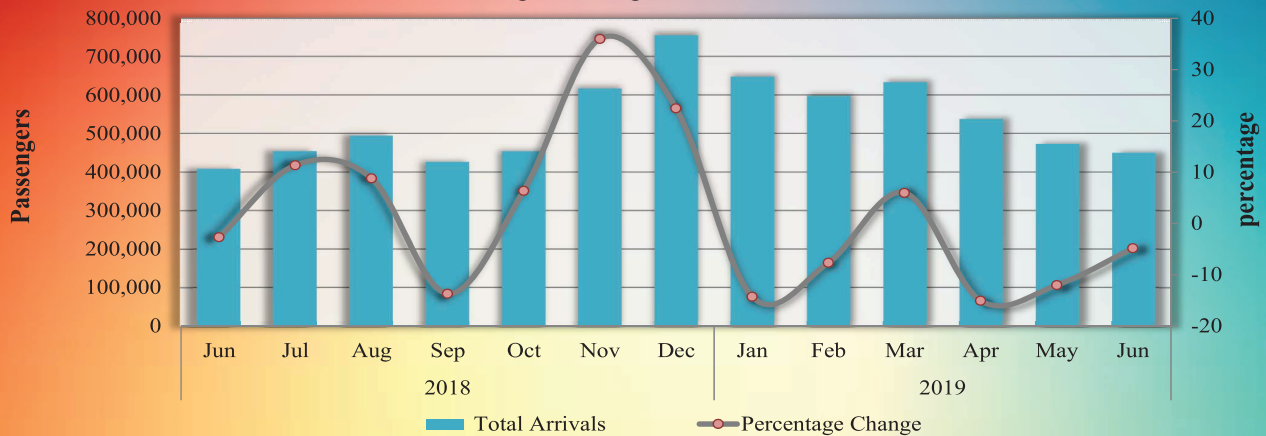


*- Deposits with maturity 9 months to 1 year
 - Loans-Business-Secured with maturity 1 to 5 years

Foreign Tourist Arrivals

In June 2019, total number of passenger arrivals was 450,013 decreased by 4.9% followed the decreasing of 12% in the preceding month. The main purpose of the passenger arrivals in Cambodia was for vacation, accounted for more than 68% of the total.

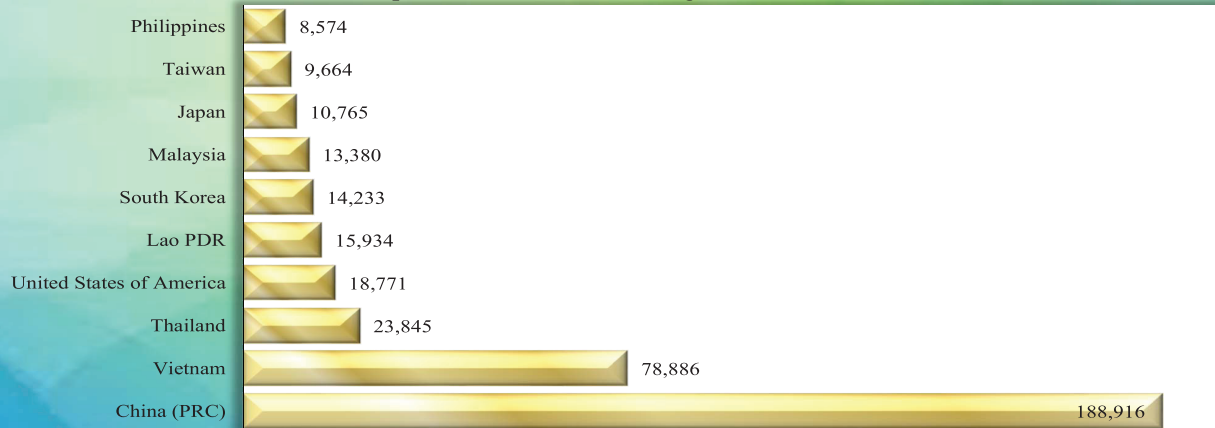
Chart 9: Foreign Passenger Arrivals in Cambodia



Source: Ministry of Tourism and Migration Department of Ministry of Interior

Most of the foreign passengers were from China P.R.C., Vietnam, Thailand, United States of America, Lao PDR, South Korea, Malaysia, Japan, Taiwan, and Philippines.

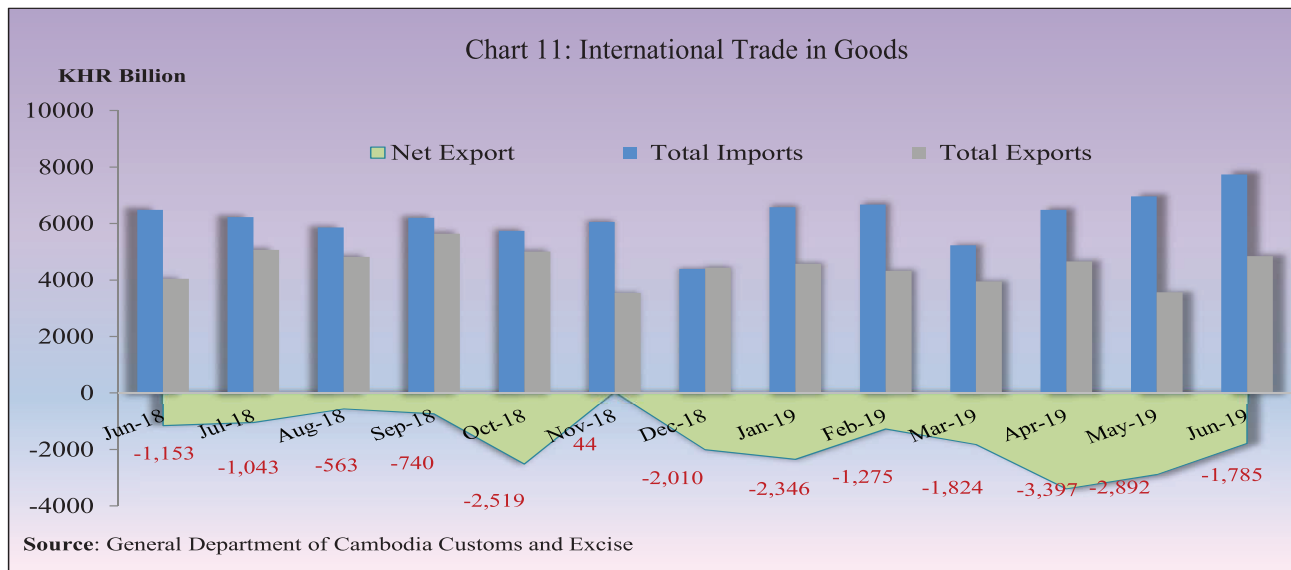
Chart 10: Top-ten Countries of Passenger Arrivals in June 2019



Source: Ministry of Tourism

International Trade in Goods

International trade in goods showed a deficit of KHR 1,784.6 billion (25.2%) in June 2019, followed the deficit of KHR 2,892.2 billion (37.4%) in May.



The major components of total exports were Garment, Footwear, Bicycle, Electrical Part, Rice, Rubber, Wood Products, Fish and Other Agricultural Products, and Vehicle part. And the major components of total imports were Fabric, Vehicles, Oil, Equipment Construction, Food and Beverage, Garman, Steel, Fertilizer, Cigarettes, Medicine, Cement, and Other Electronic Equipment.

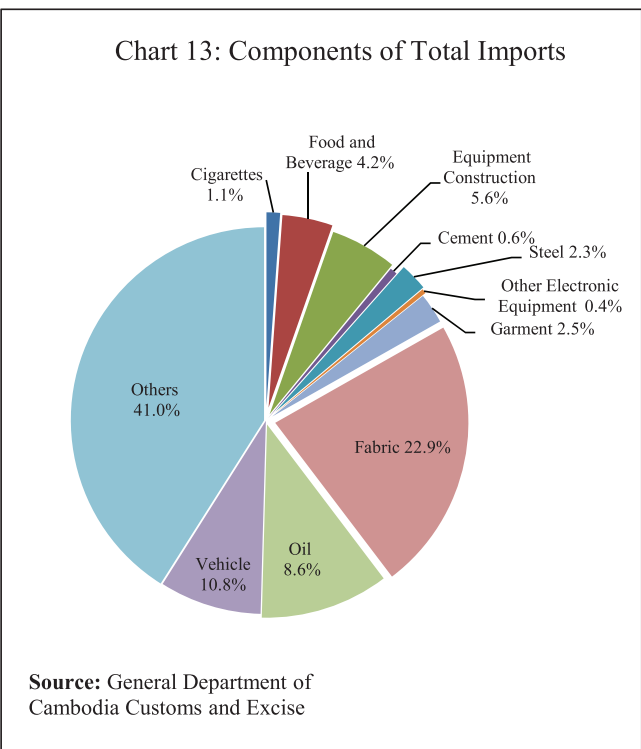
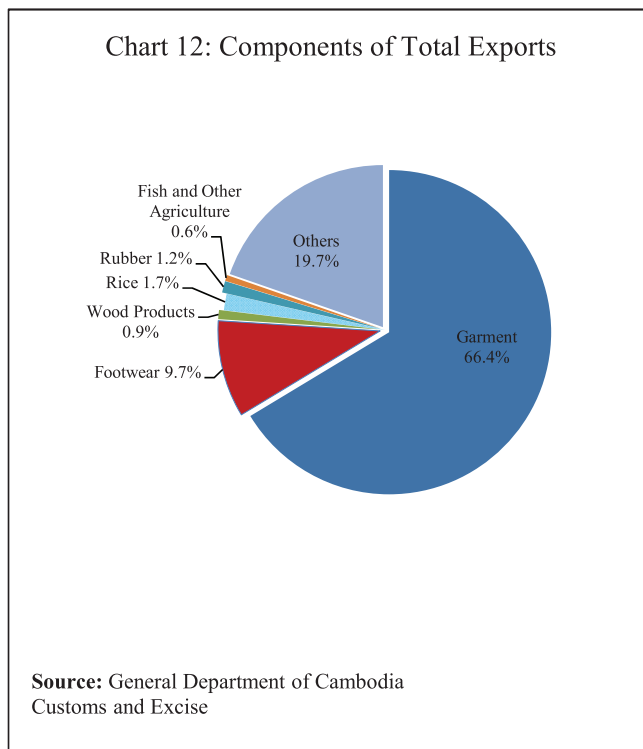


Table 1: Consumer Price Index and Inflation Rate

1. Consumer Price Index (CPI) and Component Indices (Oct-Dec. 2006 = 100)	Feb-19	Mar-19	Apr-19	May-19	Jun-19
CPI (all items)	175.99	176.45	177.02	177.36	176.67
Food and Non-Alcoholic Beverages	214.24	213.99	215.32	215.99	214.65
Alcoholic Beverages, Tobacco and Narcotics	170.41	170.64	170.53	170.61	170.90
Clothing and Footwear	150.79	151.15	151.47	150.62	150.29
Housing, Water, Electricity, Gas and other Fuels	127.21	127.91	127.98	128.07	127.35
Furnishings and Household Maintenance	153.06	152.82	153.04	152.00	151.90
Health	137.33	137.04	137.07	136.99	137.02
Transport	111.45	113.67	115.33	115.90	114.53
Communication	67.55	67.39	67.28	67.53	66.72
Recreation and Culture	118.99	118.58	118.66	118.68	119.24
Education	159.50	159.50	159.50	159.50	159.50
Restaurants	284.15	287.51	283.16	283.16	286.46
<i>Miscellaneous Goods and Services</i>	146.18	146.09	146.29	146.34	146.84
2. Percentage Change in the CPI and its Components					
2.1 Month on Month Change (%)					
CPI (all items)	0.83	0.26	0.33	0.19	-0.39
Food and Non-Alcoholic Beverages	0.66	-0.11	0.62	0.31	-0.62
Alcoholic Beverages, Tobacco and Narcotics	0.35	0.13	-0.07	0.05	0.17
Clothing and Footwear	0.85	0.24	0.21	-0.56	-0.22
Housing, Water, Electricity, Gas and other Fuels	0.84	0.55	0.05	0.07	-0.56
Furnishings and Household Maintenance	0.31	-0.16	0.14	-0.68	-0.06
Health	0.25	-0.22	0.02	-0.06	0.02
Transport	1.63	2.00	1.46	0.50	-1.19
Communication	0.09	-0.23	-0.16	0.37	-1.20
Recreation and Culture	-0.07	-0.35	0.07	0.02	0.47
Education	0.00	0.00	0.00	0.00	0.00
Restaurants	1.86	1.18	-1.51	0.00	1.16
Miscellaneous Goods and Services	1.08	-0.06	0.14	0.03	0.34
2.2 Year on Year Change (%)					
CPI (all items)	2.01	2.24	2.07	1.98	1.44
Food and Non-Alcoholic Beverages	2.17	1.94	1.87	1.89	1.10
Alcoholic Beverages, Tobacco and Narcotics	6.42	6.71	4.96	5.36	5.29
Clothing and Footwear	3.56	3.64	3.43	2.96	2.24
Housing, Water, Electricity, Gas and other Fuels	1.16	1.88	1.88	1.78	1.27
Furnishings and Household Maintenance	1.60	1.66	1.53	0.72	0.79
Health	2.27	1.87	1.54	1.43	1.45
Transport	-3.92	-1.75	-0.84	-1.03	-2.50
Communication	-0.45	-0.38	-0.60	-0.18	-1.24
Recreation and Culture	0.86	0.76	0.61	0.87	0.71
Education	0.38	0.38	0.00	0.00	0.00
Restaurants	7.22	8.24	6.60	6.08	7.15
Miscellaneous Goods and Services	1.30	1.42	1.08	1.01	1.39
3. Three-month moving average CPI (All Items)					
Year on Year Change (%)	1.73	1.93	2.11	2.10	1.83
4. Twelve-month moving average CPI (All Items)					
Year on Year Change (%)	2.40	2.39	2.36	2.29	2.16

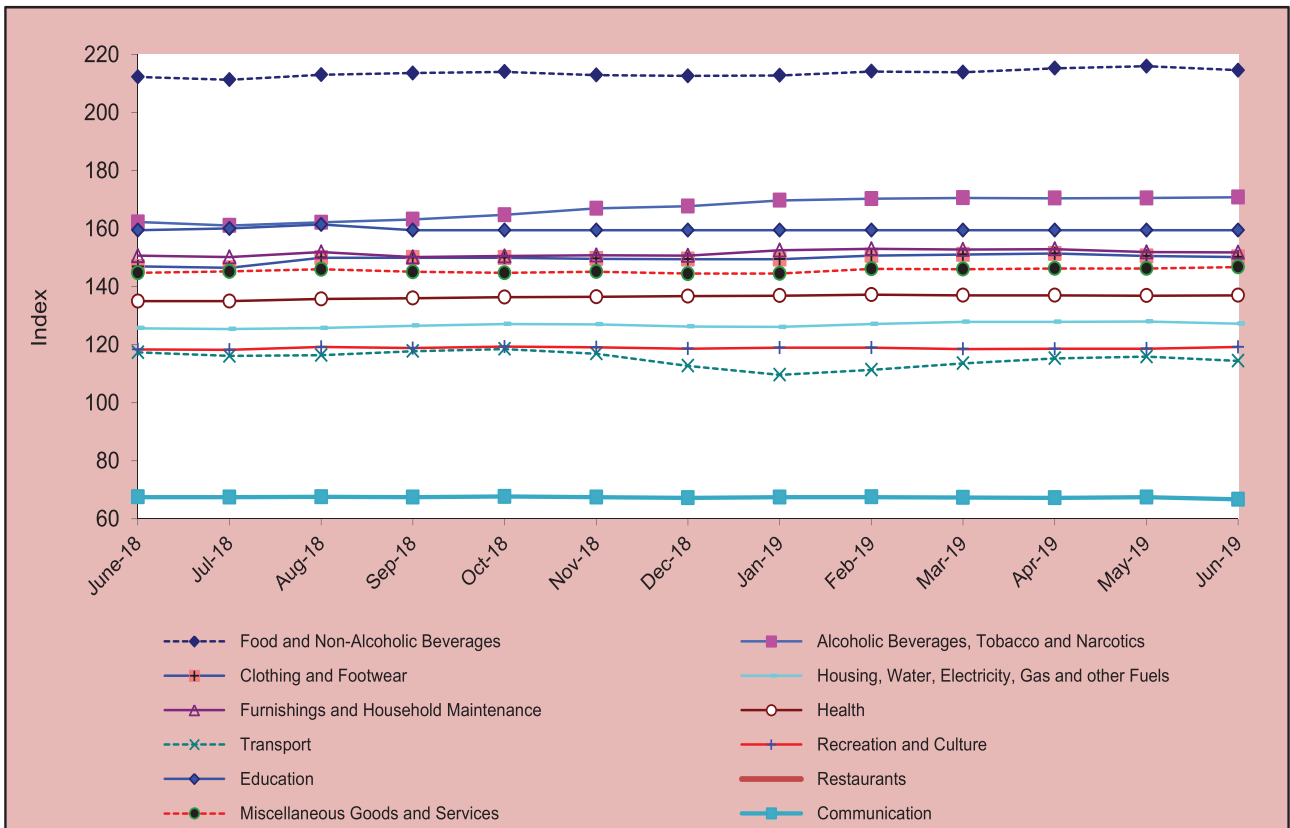
Source: National Institute of Statistics

Table 2: Consumer Items Showing Price decreased in June 2019

No.	Description	Weight	Index			Percentage Change	
			Jun-18	May-19	Jun-19	Monthly	Yearly
1	ROOT VEGETABLES	0.456	238.54	233.47	224.97	-3.6	-5.7
2	GASOLINE	4.969	99.55	93.21	89.84	-3.6	-9.8
3	FRUIT VEGETABLES	1.138	279.06	296.23	288.39	-2.6	3.3
4	TELEPHONE AND TELEFAX EQUIPMENT	0.725	48.93	48.88	47.62	-2.6	-2.7
5	FOOD PRODUCTS NEC	1.404	222.58	229.91	224.12	-2.5	0.7
6	FRESH EGGS	1.013	162.87	164.93	161.09	-2.3	-1.1
7	BISCUITS/ COOKIES	0.280	177.30	184.18	180.20	-2.2	1.6
8	BICYCLES	0.103	139.84	145.04	141.82	-2.2	1.4
9	LOCALLY PROCESSED MEAT	0.276	244.74	255.61	250.33	-2.1	2.3
10	LEAF AND STALK VEGETABLES (FRESH)	2.031	209.58	216.07	211.56	-2.1	0.9
11	GAS	2.699	116.19	126.23	123.75	-2.0	6.5
12	DIESEL	0.144	114.71	111.86	109.84	-1.8	-4.2
13	NOODLES	1.008	227.21	225.86	222.32	-1.6	-2.2
14	DUCK (FRESH)	0.319	187.86	196.21	193.14	-1.6	2.8
15	FINANCIAL SERVICES N.E.C.	0.037	85.33	85.35	84.03	-1.6	-1.5
16	PULSES/LEGUMES	0.413	227.00	233.12	230.17	-1.3	1.4
17	CHICKEN (FRESH)	1.303	212.26	218.58	215.93	-1.2	1.7
18	RICE,QUALITY NO.2 WHITE, NEANG-MENH, BATTAMBANG	2.681	219.58	233.60	231.60	-0.9	5.5
19	OTHER ARTICLES OF CLOTHING AND CLOTHING ACCESSORIES	0.059	147.95	148.64	147.31	-0.9	-0.4
20	TUBERS AND MUSHROOMS	0.439	190.26	191.55	190.12	-0.8	-0.1
21	SOLID FUELS	1.475	221.33	225.83	224.08	-0.8	1.2
22	HOUSEHOLD TEXTILES	0.015	170.96	175.18	174.01	-0.7	1.8
23	SEAFOOD (FRESH, CHILLED OR FROZEN)	0.229	236.04	244.06	242.54	-0.6	2.8
24	COFFEE, TEA AND COCOA	0.755	138.89	141.07	140.28	-0.6	1.0
25	PROCESSED FISH AND SEAFOOD	1.646	237.09	247.05	245.90	-0.5	3.7
26	CLOTHING FOR WOMEN AND GIRLS	1.065	144.57	147.40	146.73	-0.5	1.5
27	MATERIALS FOR THE MAINTENANCE AND REPAIR OF THE DWELLING	3.663	144.39	146.20	145.40	-0.5	0.7
28	GLUTINOUS RICE, QUALITY NO.1, WHITE, KHMER	0.429	137.05	140.04	139.54	-0.4	1.8
29	PORK (FRESH)	5.618	212.58	215.63	214.68	-0.4	1.0
30	OTHER CLOTHING (BOTH SEXES)	0.222	125.85	125.52	124.97	-0.4	-0.7
31	INFANTS' CLOTHING (BELOW 1 YEAR)	0.054	145.06	144.31	143.76	-0.4	-0.9
32	FISH (FRESH)	7.435	217.26	217.80	217.12	-0.3	-0.1
33	LIQUID FUELS	0.099	147.32	145.94	145.50	-0.3	-1.2
34	RICE,QUALITY NO.1 WHITE, PHAKA KANHEY, BATTAMBANG	3.052	229.74	231.32	230.78	-0.2	0.5
35	MOTOR OIL	0.062	149.65	151.97	151.70	-0.2	1.4
36	SPIRITS	0.014	162.43	169.17	168.98	-0.1	4.0
37	CLOTHING MATERIALS	0.334	162.31	163.02	162.91	-0.1	0.4
38	FOOTWEAR	0.641	159.66	163.98	163.80	-0.1	2.6
39	FURNITURE AND FURNISHINGS, CARPETS AND OTHER FLOOR COVERINGS	0.626	222.86	226.90	226.78	-0.1	1.8
40	GOODS AND SERVICES FOR ROUTINE HOUSEHOLD MAINTENANCE	1.610	131.03	131.31	131.16	-0.1	0.1

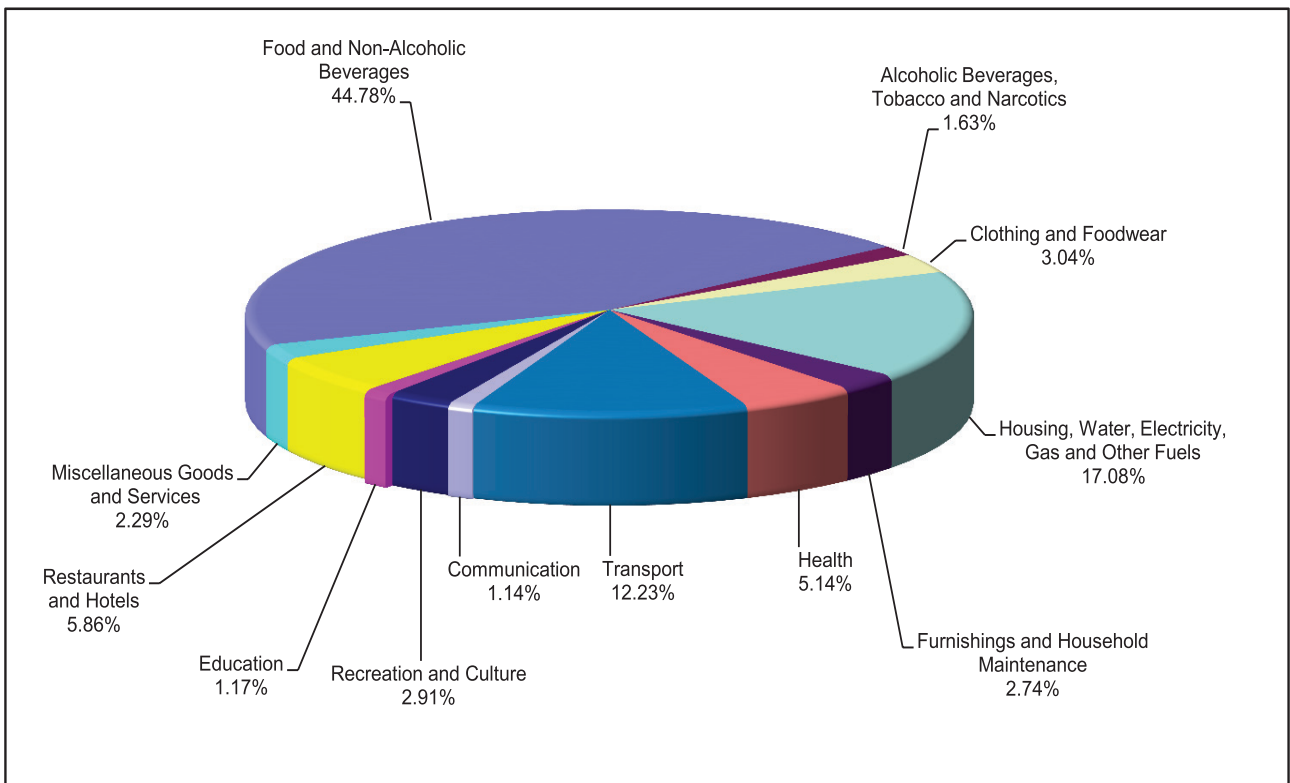
Source: National Institute of Statistics

Chart 1: Consumer Price Index



Source: National Institute of Statistics

Chart 2: Weight of All Group Indices in Consumer Basket



Source: National Institute of Statistics

Table 3: Gross Domestic Product (GDP)

	At Constant 2000 Prices					At Current Prices				
	2014r/	2015r/	2016p/	2017p/	2018p/	2014r/	2015r/	2016p/	2017p/	2018p/
GDP in KHR Billion	40,182	43,009	46,033	49,262	52,956	67,437	73,423	81,242	89,831	99,544
GDP in USD Million	9,971	10,686	11,423	12,164	13,056	16,734	18,242	20,159	22,180	24,542
GDP % Growth Rate	7.1	7.0	7.0	7.0	7.5	10.0	8.9	10.6	10.6	10.8
GDP % Growth Rate, by Economic Activity										
Agriculture, Fisheries & Forestry	0.3	0.2	1.3	1.7	1.2	0.5	0.2	3.0	4.4	4.4
Industry	10.1	11.7	10.9	9.8	11.6	17.0	17.7	17.7	15.8	16.0
Services	8.7	7.1	6.8	7.0	6.7	13.4	9.2	10.8	10.1	10.2
GDP Per Capita in KHR Million	2.7	2.9	3.0	3.2	3.4	4.6	4.9	5.4	5.8	6.3
GDP Per Capita in USD	674	714	754	783	829	1,131	1,218	1,330	1,429	1,559

Chart 3: GDP by Economic Activity
(At Constant 2000 Prices)

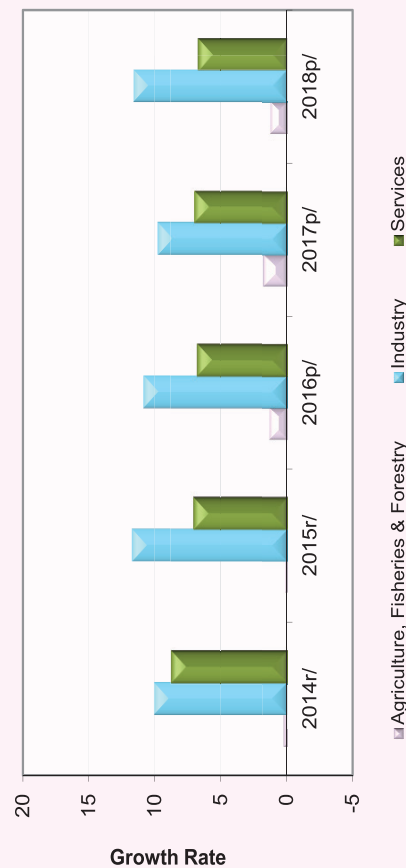
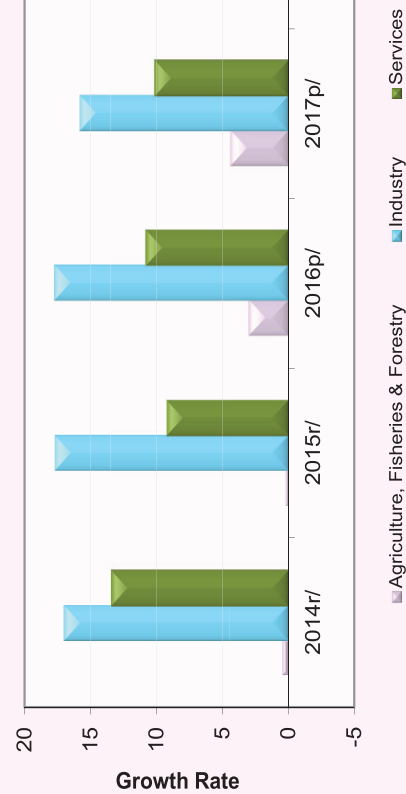


Chart 4: GDP by Economic Activity
(At Current Prices)



p/: preliminary estimates

r/: revised

Source: National Institute of Statistics

Table 4: Investment Projects Approved by Sectors

(In USD Million)

Sector	Agriculture		Industries		Services		Tourism		Total	
	Projects	Fixed Assets	Projects	Fixed Assets	Projects	Fixed Assets	Projects	Fixed Assets	Projects	Fixed Assets
2016										
Q3	1	35.3	9	67.4	-	-	-	-	10	102.7
Q4	5	246.6	17	113.5	2	91	4	56.3	28	507.4
Total	9	331.3	74	900.8	4	442.0	11	718.4	98	2,392.5
2017										
Q1	1	8.0	18	115.6	1	4.2	1	3.6	21	131.4
Q2	3	61.0	21	209.9	3	1,045.3	-	644.2	27	1,960.3
Q3	3	205.6	33	281.1	-	-	2	2,518.8	38	3,005.4
Q4	-	-	25	119.8	-	-	-	-	25	119.8
Total	7	274.5	97	726.3	4	1,049.5	3	3,166.6	111	5,216.9
2018										
Q1	6	210.2	26	154.3	2	29.5	2	75.2	36	469.2
Q2	3	122.5	21	128.2	3	2,049.6	2	125.9	29	2,426.2
Q3	1	32.0	25	408.2	2	550.4	2	137.3	30	1,127.9
Q4	3	79.5	43	7.0	3	240.4	6	1,239.4	55	1,566.3
Total	13	444.2	115	697.7	10	2,869.9	12	1,577.8	150	5,589.6
2019										
Q1	-	-	58	310.1	1	6.8	4	1,618.8	63	1,935.6
Q2	2	31.2	27	137.5	2	460.9	6	2,057.3	37	2,686.9
Total	2	31.2	85	447.5	3	467.7	10	3676.1	100	4622.5

Chart 5: Investment Fixed Assets by Sectors

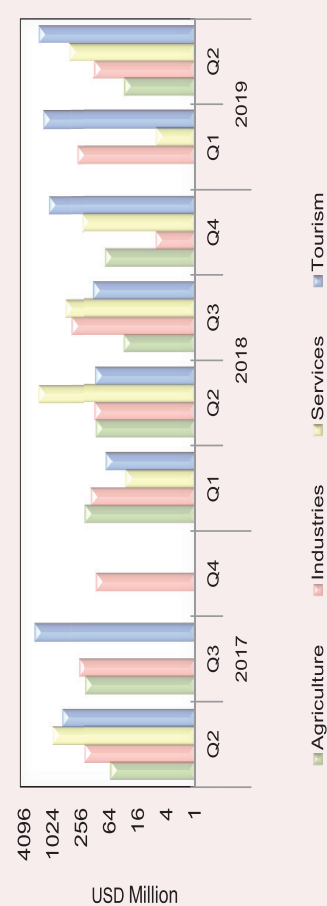
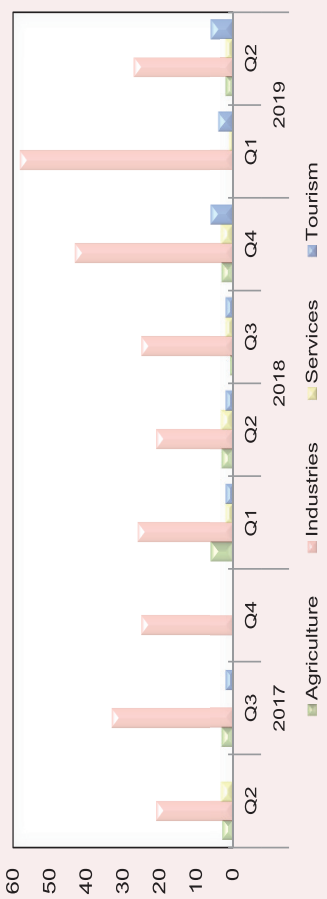


Chart 6: Number of Investment Projects by Sectors



Source: Council for the Development of Cambodia (Cambodian Investment Board)

Table 5: Investment Projects Approved by Major Countries*

(In USD Million)

Country	2017			2018				2019	
	Q2	Q3	Q4	Q1	Q2	Q3	Q4	Q1	Q2
Cambodia	595.7	2,550.4	5.9	133.9	336.5	838.1	729.5	1,050.4	2,491.7
China	1,051.0	293.8	64.4	224.2	2,042.3	205.8	227.8	279.9	99.3
Korea	7.2	123.6	3.2	3.5	5.4	3.6	2.1	19.1	-
United States	-	-	-	6.8	-	-	-	-	-
Thailand	15.9	-	-	19.1	-	13.1	6.8	6.8	2.2
Vietnam	-	-	-	-	-	-	21.4	-	-
Malaysia	8.9	3.8	1.2	-	2.2	-	-	4.5	-
Singapore	248.3	3.8	-	1.4	-	-	6.5	10.3	-
Taiwan	3.8	6.0	3.0	11.7	-	8.7	12.9	24.6	27.3
Australia	-	-	-	2.4	-	-	-	-	-
England	4.9	-	8.7	-	-	-	10.3	502.7	3.1
Japan	-	-	-	-	-	-	822.6	-	2.3
Hong Kong	20.8	20.2	31.0	13.8	28.8	33.1	5.9	24.6	55.7
Others	3.9	3.7	2.4	52.4	11.1	25.3	6.7	12.7	5.3
Total	1,960.3	3,005.4	119.8	469.2	2,426.2	1,127.9	1,852.5	1,935.6	2,686.9
(Share of Total)									
Cambodia	30.4	84.9	5.0	28.5	13.9	74.3	39.4	54.3	92.7
China	53.6	9.8	53.7	47.8	84.2	18.2	12.3	14.5	3.7
Korea	0.4	4.1	2.7	0.7	0.2	0.3	0.1	1.0	-
United States	-	-	-	1.5	-	-	-	-	-
Thailand	0.8	-	-	4.1	-	1.2	0.4	0.4	0.1
Vietnam	-	-	-	-	-	-	1.2	-	-
Malaysia	0.5	0.1	1.0	-	0.1	-	-	0.2	-
Singapore	12.7	0.1	-	0.3	-	-	0.3	0.5	-
Taiwan	0.2	0.2	2.5	2.5	-	0.8	0.7	1.3	1.0
Australia	-	-	-	0.5	-	-	-	-	-
England	0.2	-	7.3	-	-	-	0.6	26.0	0.1
Canada	-	-	-	-	-	-	44.4	-	-
Hong Kong	1.1	0.7	25.8	2.9	1.2	2.9	0.3	1.3	2.1
Others	0.2	0.1	2.0	11.2	0.5	2.2	0.4	0.7	0.2
Total	100.0	100.0	100.0	100.0	100.0	100.0	100.0	100.0	100.0

* Fixed Assets

Source: Council for the Development of Cambodia (Cambodian Investment Board)

Table 6: Daily Exchange Rate in June 2019

(KHR/USD)

Day	Parallel Market Rate			Official Rate	Daily Change*	
	Purchase	Sale	Midpoint		Spread	% Change
1	4,074	4,084	4,079	4,062	10.0	0.2
2	4,074	4,084	4,079	4,062	0.0	0.0
3	4,074	4,084	4,079	4,070	0.0	0.0
4	4,069	4,081	4,075	4,070	-5.0	-0.1
5	4,069	4,081	4,075	4,070	0.0	0.0
6	4,069	4,081	4,075	4,072	0.0	0.0
7	4,069	4,081	4,075	4,072	0.0	0.0
8	4,069	4,081	4,075	4,072	0.0	0.0
9	4,069	4,081	4,075	4,072	0.0	0.0
10	4,069	4,081	4,075	4,075	0.0	0.0
11	4,069	4,081	4,075	4,072	0.0	0.0
12	4,069	4,077	4,073	4,068	0.0	0.0
13	4,069	4,077	4,073	4,070	0.0	0.0
14	4,069	4,077	4,073	4,075	0.0	0.0
15	4,069	4,077	4,073	4,075	0.0	0.0
16	4,069	4,077	4,073	4,075	0.0	0.0
17	4,075	4,081	4,078	4,076	6.0	0.1
18	4,072	4,081	4,077	4,076	-3.0	-0.1
19	4,072	4,081	4,077	4,075	0.0	0.0
20	4,072	4,081	4,077	4,075	0.0	0.0
21	4,072	4,081	4,077	4,076	0.0	0.0
22	4,072	4,081	4,077	4,076	0.0	0.0
23	4,072	4,081	4,077	4,076	0.0	0.0
24	4,072	4,081	4,077	4,074	0.0	0.0
25	4,072	4,081	4,077	4,070	0.0	0.0
26	4,069	4,079	4,074	4,068	-3.0	-0.1
27	4,069	4,079	4,074	4,068	0.0	0.0
28	4,069	4,079	4,074	4,066	0.0	0.0
29	4,069	4,079	4,074	4,066	0.0	0.0
30	4,069	4,079	4,074	4,066	0.0	0.0
Average Rate	4,071	4,080	4,075	4,071	0.2	0.0

* Spread of Daily Purchasing Market Rate

Table 7: Monthly Exchange Rate
(KHR/USD, End-Period)

Month	Market Rate				Official Rate
	Purchase	Monthly %Change	Sale	Midpoint	
Dec-13	4,003	0.23	4,013	4,008	3,995
Dec-14	4,064	0.22	4,073	4,069	4,075
Dec-15	4,048	0.10	4,055	4,052	4,050
Dec-16	4,039	0.17	4,050	4,045	4,037
Dec-17	4,037	0.07	4,046	4,042	4,037
2018					
Jan	4,016	-0.52	4,022	4,019	4,015
Feb	4,009	-0.17	4,018	4,014	4,010
Mar	4,002	-0.17	4,011	4,007	4,000
Apr	4,038	0.90	4,051	4,045	4,032
May	4,077	0.97	4,089	4,083	4,075
Jun	4,066	-0.27	4,075	4,071	4,063
Jul	4,064	-0.05	4,074	4,069	4,059
Aug	4,079	0.37	4,089	4,084	4,084
Sep	4,082	0.07	4,092	4,087	4,082
Oct	4,058	-0.59	4,067	4,063	4,060
Nov	4,038	-0.49	4,050	4,044	4,031
Dec	4,027	-0.27	4,039	4,033	4,018
2019					
Jan	4,016	-0.27	4,025	4,021	4,011
Feb	4,007	-0.22	4,016	4,012	4,003
Mar	4,019	0.30	4,030	4,025	4,015
Apr	4,049	0.75	4,058	4,054	4,050
May	4,064	0.37	4,075	4,070	4,062
Jun	4,069	0.12	4,079	4,074	4,066

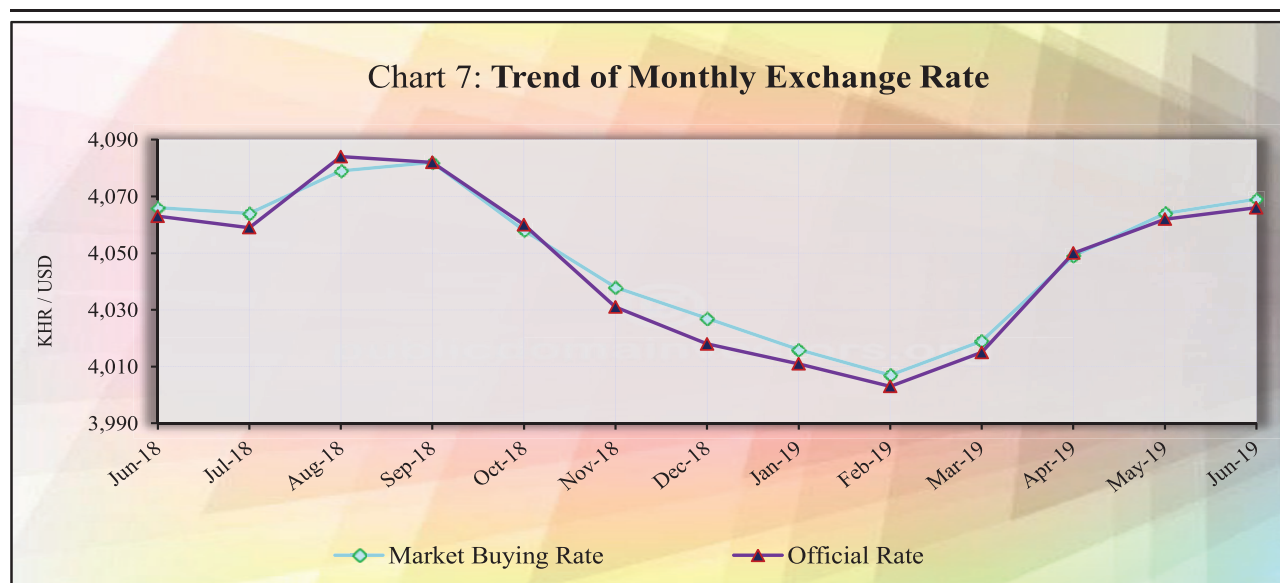


Table 8: The Value of KHR Against Other Currencies
(Official Buying Rate, End-Period)

Unit	SDR	US Dollar	Euro	Japanese Yen	Pound Sterling	Indonesian Rupiah	Malaysian Ringgit	Philippines Peso	Singaporean Dollar	Thai Baht	Vietnamese Dong
	1	1	1	100	1	1000	1	100	1	1	1000
Dec-13	6,152	3,995	5,515	3,807	6,589	327	1,215	8,999	3,153	122	190
Dec-14	5,902	4,075	4,955	3,411	6,342	328	1,166	9,117	3,083	124	191
Dec-15	5,617	4,050	4,429	3,362	6,000	294	944	8,630	2,863	112	181
Dec-16	5,410	4,037	4,265	3,467	4,960	300	901	8,119	2,792	112	178
Dec-17	5,735	4,037	4,821	3,574	5,426	298	994	8,094	3,017	124	178
2018											
Jan	5,833	4,015	4,971	3,686	5,651	300	1,033	7,841	3,064	128	177
Feb	5,820	4,010	4,903	3,730	5,574	293	1,022	7,712	3,027	128	176
Mar	5,815	4,000	4,919	3,757	5,609	291	1,035	7,654	3,050	128	175
Apr	5,797	4,032	4,887	3,694	5,552	290	1,029	7,771	3,045	128	177
May	5,763	4,075	4,751	3,753	5,312	291	1,022	7,744	3,043	127	179
Jun	5,708	4,063	4,701	3,679	5,314	282	1,005	7,593	2,972	123	177
Jul	5,696	4,059	4,753	3,660	5,332	282	1,000	7,632	2,984	122	175
Aug	5,727	4,084	4,763	3,681	5,312	278	994	7,634	2,985	125	175
Sep	5,723	4,082	4,751	3,600	5,338	274	985	7,542	2,984	126	175
Oct	5,612	4,060	4,606	3,589	5,160	267	971	7,583	2,931	122	174
Nov	5,576	4,031	4,592	3,555	5,153	280	963	7,693	2,943	122	173
Dec	5,588	4,018	4,597	3,641	5,098	277	969	7,653	2,942	124	174
2019											
Jan	5,604	4,011	4,610	3,683	5,264	284	981	7,668	2,979	128	173
Feb	5,595	4,003	4,555	3,610	5,331	285	984	7,714	2,970	127	173
Mar	5,573	4,015	4,510	3,631	5,244	282	985	7,611	2,961	126	173
Apr	5,595	4,050	4,515	3,629	5,233	285	981	7,773	2,975	127	174
May	5,595	4,062	4,523	3,717	5,123	282	969	7,786	2,943	128	173
Jun	5,652	4,066	4,624	3,776	5,154	288	982	7,931	3,006	132	174
Monthly % Change	1.02	0.10	2.23	1.59	0.61	2.13	1.34	1.86	2.14	3.13	0.58

Table 9: Deposit Money Bank's Interest Rates on Deposits and Loans in KHR

(Weighted Average Rate on New Amount)

	Dec-17	Jun-18	Jul-18	Aug-18	Sep-18	Oct-18	Nov-18	Dec-18	Jan-19	Feb-19	Mar-19*	Apr-19	May-19	Jun-19
Deposit:														
Demand Deposits	0.04	0.12	0.06	0.09	0.09	0.06	0.01	0.02	0.01	0.07	0.02	0.01	0.02	0.03
Saving Deposits	1.19	1.00	1.07	1.10	1.10	1.10	1.00	0.59	0.59	0.57	0.58	0.66	0.60	0.62
Term Deposits:														
One month or less	3.23	2.84	2.85	2.59	2.59	2.61	2.66	2.29	2.64	3.04	3.09	2.22	2.91	2.97
Greater than one month to three months	3.29	4.25	4.62	4.65	4.65	4.31	3.88	3.47	3.91	3.38	3.92	2.87	3.69	4.15
Greater than three months to six months	5.13	4.60	5.17	5.05	5.15	5.15	5.03	4.68	4.81	5.16	4.85	4.60	4.93	4.70
Greater than six months to 9 months	4.77	4.66	5.76	4.44	6.21	6.21	5.57	4.97	4.86	4.41	4.95	5.04	5.91	5.65
Greater than 9 months to 1 Year	6.36	6.19	6.26	6.30	6.30	6.33	6.51	6.06	6.21	6.09	6.30	6.09	6.12	6.15
Greater than 1 Year to 3 Years	7.34	7.92	7.77	7.19	7.19	7.71	7.14	6.88	7.27	7.26	7.38	6.18	7.17	7.01
Greater than 3 Year to 5 Years	6.75	7.25	7.09	7.25	7.17	7.17	7.04	7.25	7.14	7.23	7.22	7.24	6.98	7.21
Over 5 Years	0.00	0.00	5.75	0.00	7.25	7.25	7.25	7.25	0.00	5.75	5.75	7.25	0.00	0.00
Other Deposits	0.00	0.00	4.30	0.00	0.00	0.00	0.11	0.00	0.00	0.02	0.00	0.00	7.00	3.58
Loans:														
Overdraft - Consumer	18.00	18.00	8.35	8.25	8.25	8.25	0.00	7.33	0.00	7.86	9.25	7.79	7.59	10.14
Overdraft - Business	7.52	8.72	8.57	8.48	8.31	8.31	8.53	8.58	8.31	7.88	0.04	8.09	7.93	7.84
Credit Card	17.91	17.57	17.72	17.76	17.78	17.78	15.39	17.34	16.98	16.75	18.00	16.60	17.57	17.55
Bank Placements:														
One month or less	0.00	0.00	0.00	0.00	0.00	0.00	0.00	0.00	0.00	2.42	0.00	0.00	0.00	0.00
Greater than one month	3.75	5.34	5.45	4.01	4.37	4.37	1.91	0.00	7.54	1.63	3.16	5.20	6.50	7.65
Term Loans - Consumer:														
Unsecured:														
Up to 1 Year	18.00	18.00	18.00	18.00	18.00	18.00	17.76	16.55	16.02	16.15	16.00	16.00	15.34	10.21
Greater than 1 Year to 5 Years	17.83	17.91	18.00	18.00	18.00	18.00	17.19	16.36	8.85	10.48	16.00	15.71	14.78	14.95
Over 5 Years	0.00	0.00	0.00	0.00	0.00	0.00	0.00	18.00	11.05	9.91	0.00	12.30	12.54	12.99
Secured:														
Up to 1 Year	15.76	17.51	17.34	9.16	9.16	8.99	16.38	14.75	9.50	12.95	13.38	16.83	16.91	16.73
Greater than 1 Year to 5 Years	17.18	16.72	16.35	16.78	14.78	14.78	16.26	15.92	14.99	15.26	14.97	14.23	13.54	13.47
Over 5 Years	10.81	10.87	8.68	8.13	8.55	8.55	10.63	6.71	10.01	10.01	10.30	9.68	9.66	9.28
Term Loans - Business:														
Unsecured:														
Up to 1 Year	18.00	18.00	17.97	17.88	17.88	17.88	17.90	18.00	18.00	17.98	18.00	9.78	17.86	17.86
Greater than 1 Year to 5 Years	17.92	7.79	7.32	8.98	8.05	8.05	17.90	8.57	15.70	9.84	9.31	7.41	7.21	7.07
Over 5 Years	0.00	0.00	0.00	0.00	0.00	0.00	0.00	0.00	18.00	0.00	0.00	0.00	0.00	0.00
Secured:														
Up to 1 Year	11.53	15.02	15.41	10.94	10.94	10.62	11.43	10.12	10.98	11.77	10.34	10.89	8.40	9.93
Greater than 1 Year to 5 Years	17.05	16.33	14.88	14.79	14.79	14.79	13.18	13.14	13.74	14.27	15.55	14.45	13.54	12.87
Over 5 Years	10.90	12.62	11.89	11.72	11.72	11.68	11.37	11.47	11.42	11.53	10.81	11.26	10.02	9.86
Other Loans														
Up to 1 Year	10.71	0.00	10.20	9.60	9.60	0.00	12.00	11.29	9.00	11.53	0.00	9.69	10.60	22.00
Greater than 1 Year to 5 Years	0.00	0.00	0.00	9.50	9.50	0.00	0.00	0.00	0.00	0.00	0.00	9.42	8.76	18.55
Over 5 Years	0.00	7.69	7.50	7.71	7.71	7.76	7.58	7.88	7.69	7.72	8.00	5.99	4.27	4.44

Including Commercial Banks and Specialized Banks

*Revised Data

Table 10: Deposit Money Bank's Interest Rates on Deposits and Loans in US Dollar

(Weighted Average Rate on New Amount)

	Dec-17	Jun-18	Jul-18	Aug-18	Sep-18	Oct-18	Nov-18	Dec-18	Jan-19	Feb-19	Mar-19*	Apr-19	May-19	Jun-19
Deposit:														
Demand Deposits	0.22	0.56	1.46	0.33	0.33	0.35	0.23	0.27	0.32	0.22	0.15	0.19	0.18	0.24
Saving Deposits	0.54	0.66	0.59	0.56	0.56	0.53	0.35	0.36	0.36	0.62	0.37	0.29	0.28	0.27
Term Deposits:														
One month or less	1.81	1.75	1.66	1.59	1.43	1.52	1.40	1.40	1.89	1.52	1.55	1.55	1.63	1.78
Greater than one month to three months	2.18	2.29	2.37	2.44	2.34	2.37	2.41	2.56	2.15	2.48	2.41	2.31	2.30	2.26
Greater than three months to six months	3.19	3.38	3.37	3.43	3.18	3.38	3.71	3.34	2.84	3.27	3.31	3.10	3.57	2.99
Greater than 6 months to 9 months	4.07	4.60	3.86	4.05	4.13	3.86	3.97	4.05	4.43	3.75	3.56	4.40	3.85	4.04
Greater than 9 months to 1 Year	4.87	5.08	4.79	4.99	4.86	4.88	4.86	4.85	4.39	4.52	4.62	4.48	4.55	4.67
Greater than 1 Year to 3 Years	5.63	6.03	5.78	5.77	5.53	5.41	5.10	5.52	5.60	5.60	5.65	5.25	5.40	5.51
Greater than 3 Year to 5 Years	6.04	6.70	6.61	6.52	5.03	6.15	2.91	6.68	5.62	6.66	6.28	5.76	6.45	6.07
Over 5 Years	6.37	6.49	7.21	7.22	6.51	6.50	6.49	6.50	6.53	6.45	7.19	5.09	5.42	5.98
Other Deposits	1.65	4.48	2.45	2.24	2.61	0.98	1.39	1.74	2.55	1.88	2.13	2.37	2.50	2.63
Loans:														
Overdraft - Consumer	7.66	7.34	8.39	7.52	8.15	8.26	8.21	6.92	7.87	7.77	8.05	7.78	7.91	7.83
Overdraft - Business	7.51	7.66	7.62	7.54	7.52	7.55	7.27	7.58	7.67	0.50	7.56	7.60	7.55	7.85
Credit Card	19.06	14.28	14.42	12.47	13.65	16.33	18.94	28.89	29.31	28.41	16.37	18.91	16.40	14.76
Bank Placements:														
One month or less	1.32	1.56	1.75	1.41	1.91	1.85	1.70	1.69	2.05	1.39	1.56	1.75	2.01	2.43
Greater than one month	1.78	2.26	2.40	2.32	2.18	2.34	2.44	2.09	2.27	2.18	2.40	2.19	2.28	1.94
Term Loans - Consumer:														
Unsecured:														
Up to 1 Year	11.63	21.75	19.62	20.44	15.17	22.58	20.42	19.93	18.68	6.76	16.93	17.37	11.32	9.50
Greater than 1 Year to 5 Years	8.58	12.21	7.09	13.57	12.97	14.23	13.18	12.98	12.30	11.41	14.76	14.92	14.45	13.04
Over 5 Years	10.02	0.00	7.80	10.93	8.85	8.54	8.19	11.00	11.01	7.63	11.05	7.65	10.64	12.98
Secured:														
Up to 1 Year	7.80	7.37	10.25	7.19	7.24	7.88	7.08	7.07	8.48	7.25	7.44	7.40	7.37	7.11
Greater than 1 Year to 5 Years	12.38	11.47	10.12	11.29	11.06	11.55	11.34	10.75	10.68	10.64	12.49	10.43	11.13	10.97
Over 5 Years	9.73	8.89	9.10	9.38	9.32	9.12	9.19	9.35	9.57	9.25	10.24	8.76	8.62	8.75
Term Loans - Business:														
Unsecured:														
Up to 1 Year	9.34	13.69	12.55	14.32	13.38	13.92	14.64	7.03	9.51	10.73	19.78	14.69	17.58	26.11
Greater than 1 Year to 5 Years	9.32	9.06	18.00	17.00	16.53	22.79	7.79	6.25	25.99	40.89	32.21	11.17	31.29	27.13
Over 5 Years	0.00	8.00	0.00	9.00	0.00	0.00	0.00	0.00	0.00	0.00	10.50	6.58	0.00	0.00
Secured:														
Up to 1 Year	10.03	7.41	7.42	7.62	8.11	8.23	7.83	8.55	8.10	7.49	7.85	8.01	7.50	7.56
Greater than 1 Year to 5 Years	10.74	10.58	10.90	9.95	10.96	10.40	10.40	10.83	10.39	9.81	9.83	9.73	10.01	8.70
Over 5 Years	9.57	9.51	10.28	10.35	10.33	10.45	10.28	9.58	10.38	9.30	10.62	10.00	10.14	9.97
Other Loans														
Up to 1 Year	5.79	6.28	6.24	6.17	6.17	6.27	6.41	6.17	6.36	6.09	6.48	5.90	6.59	6.48
Greater than 1 Year to 5 Years	7.65	8.19	7.82	7.94	7.79	7.42	7.40	7.61	7.88	7.34	7.84	7.60	7.62	8.08
Over 5 Years	6.89	6.75	6.78	6.97	6.90	6.76	6.35	7.04	6.83	6.96	6.93	6.76	6.90	6.91

Including Commercial Banks and Specialized Banks

*Revised Data

Table 11: Monetary Survey

(In KHR Billion)

	Feb-19	Mar-19	Apr-19	May-19	Jun-19
Net Foreign Assets	57,217.9	58,148.8	60,193.9	60,230.1	62,699.5
Foreign Assets	75,105.8	76,508.1	78,865.8	79,261.9	81,659.5
Foreign Liabilities	-17,887.9	-18,359.2	-18,671.9	-19,031.8	-18,960.0
Net Domestic Assets	34,080.0	33,997.2	34,301.0	34,716.6	33,548.0
Domestic Credit	69,415.7	69,194.1	70,572.8	71,566.5	72,821.3
Net Claims on Government	-15,403.9	-17,381.0	-18,066.4	-18,449.1	-18,747.4
Claims on Government	0.0	0.0	0.0	0.0	0.0
Deposits of Government	-15,403.9	-17,381.0	-18,066.4	-18,449.1	-18,747.4
Non-Government	84,819.7	86,575.2	88,639.2	90,015.6	91,568.6
State Enterprises	0.8	0.8	0.6	0.6	0.6
Private Sector	84,818.9	86,574.4	88,638.5	90,015.0	91,568.0
Of Which in Foreign Currenc	84,121.1	85,874.6	87,832.1	89,240.7	90,793.0
Other Items Net	-35,335.7	-35,197.0	-36,271.8	-36,849.9	-39,273.2
Restricted Deposits	-2,030.0	-2,068.0	-2,108.8	-2,128.0	-2,248.8
Capital & Reserves	-28,341.0	-28,594.0	-29,539.1	-30,247.1	-32,104.4
Others	-4,964.8	-4,534.9	-4,623.8	-4,474.7	-4,920.0
Liquidity (M2)	91,297.9	92,146.0	94,494.9	94,946.7	96,247.6
Money (M1)	10,994.0	10,782.0	10,961.1	11,087.5	11,274.5
Currency Outside Banks	9,699.9	9,664.1	9,809.9	9,704.2	10,036.4
Demand Deposits	1,294.0	1,117.8	1,151.2	1,383.3	1,238.2
Quasi-Money	80,303.9	81,364.0	83,533.8	83,859.2	84,973.0
Time and Savings Deposits	2,980.6	2,660.2	2,776.1	3,094.9	3,336.3
Foreign Currency Deposits	77,323.3	78,703.8	80,757.7	80,764.3	81,636.7

Table 12: Monetary Survey
(Monthly Change)

	Change in KHR Billion			Percentage Change		
	Apr-19	May-19	Jun-19	Apr-19	May-19	Jun-19
Net Foreign Assets	2,045.0	36.2	2,469.4	3.5	0.1	4.1
Foreign Assets	2,357.7	396.2	2,397.6	3.1	0.5	3.0
Foreign Liabilities	312.6	359.9	-71.8	1.7	1.9	-0.4
Net Domestic Assets	303.9	415.6	-1,168.6	0.9	1.2	-3.4
Domestic Credit	1,378.7	993.7	1,254.8	2.0	1.4	1.8
Net Claims on Government	-685.4	-382.7	-298.3	-3.9	-2.1	-1.6
Claims on Government	0.0	0.0	0.0	0.0	0.0	0.0
Deposits of Government	685.4	382.7	298.3	3.9	2.1	1.6
Non-Government	2,064.0	1,376.4	1,553.0	2.4	1.6	1.7
State Enterprises	-0.1	0.0	0.0	-14.3	-0.2	-6.6
Private Sector	2,064.1	1,376.4	1,553.1	2.4	1.6	1.7
Of Which in Foreign Curren	1,957.6	1,408.6	1,552.3	2.3	1.6	1.7
Other	-1,074.8	-578.2	-2,423.3	-3.1	-1.6	-6.6
Restricted Deposits	40.8	19.2	120.8	2.0	0.9	5.7
Capital & Reserves	945.1	708.0	1,857.2	3.3	2.4	6.1
Others	-88.9	149.1	-445.3	-2.0	3.2	-10.0
Liquidity (M2)	2,348.9	451.8	1,300.8	2.5	0.5	1.4
Money (M1)	179.1	126.4	187.1	1.7	1.2	1.7
Currency Outside Banks	145.8	-105.8	332.2	1.5	-1.1	3.4
Demand Deposits	33.3	232.1	-145.1	3.0	20.2	-10.5
Quasi-Money	2,169.8	325.4	1,113.8	2.7	0.4	1.3
Time and Savings Deposits	115.9	318.8	241.4	4.4	11.5	7.8
Foreign Currency Deposits	2,053.9	6.6	872.4	2.6	0.0	1.1

Chart 8: Monetary Survey

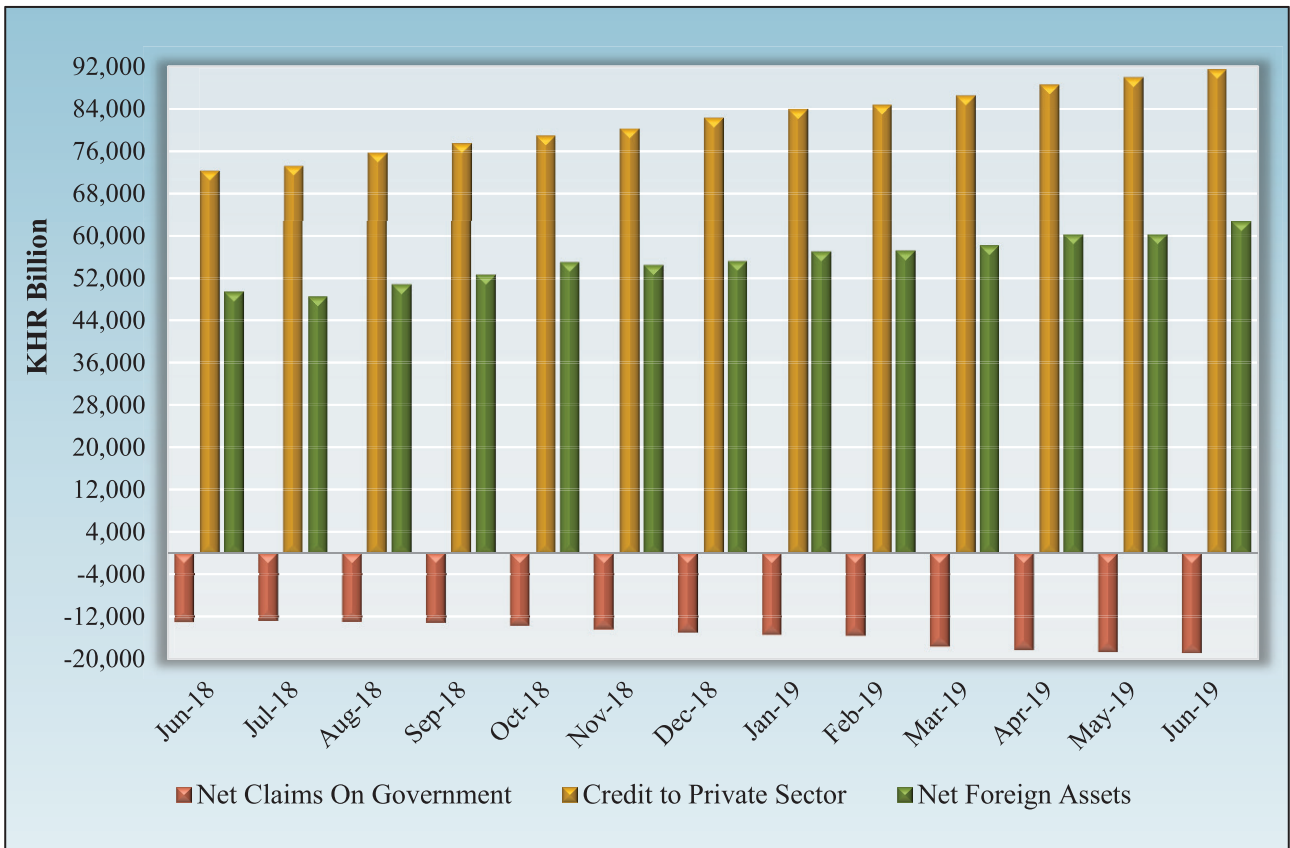


Chart 9: Components of Money Supply

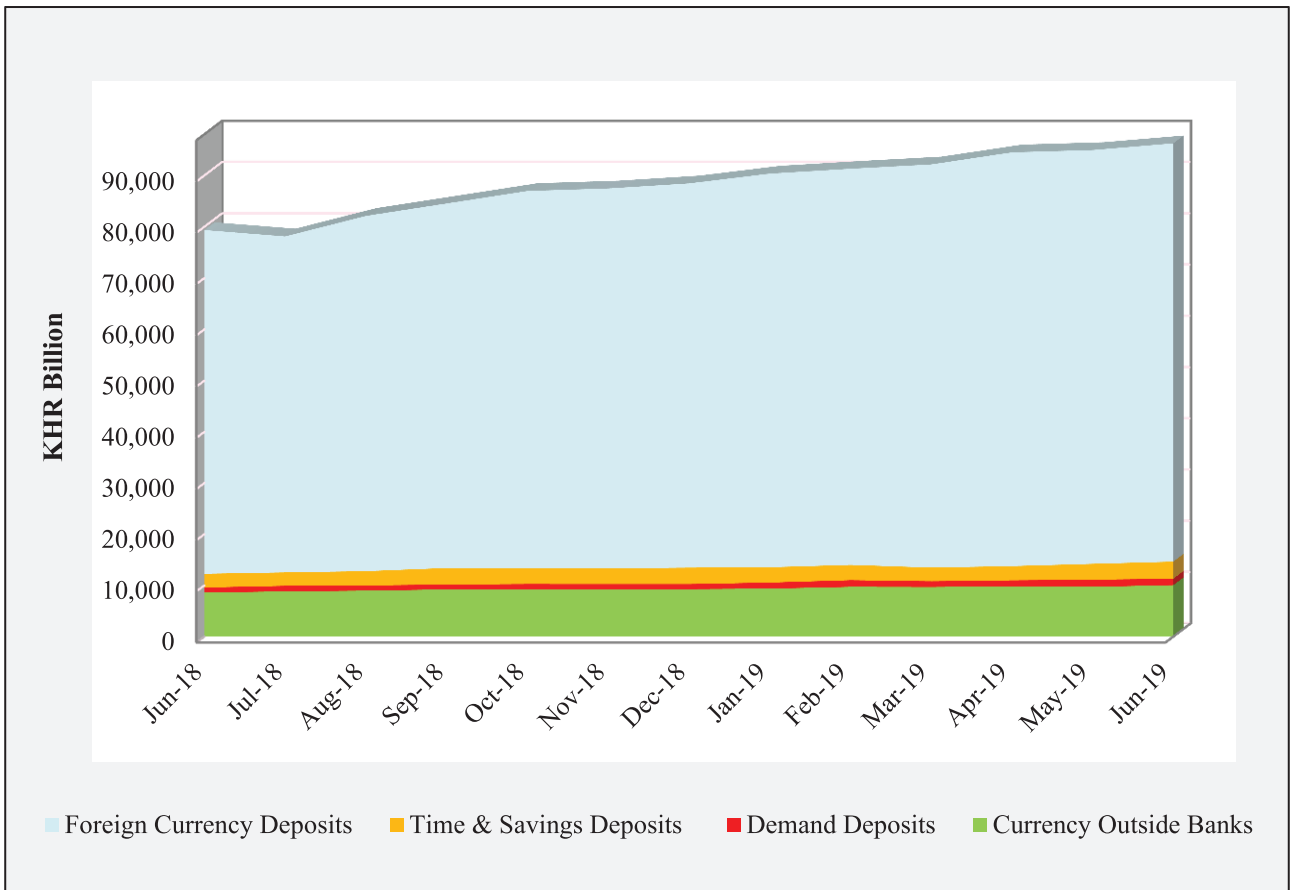


Table 13: Deposit Money Banks' Balance Sheet

(In KHR Billion)

	Feb-19	Mar-19	Apr-19	May-19	Jun-19
Net Foreign Assets	-2,339.3	-2,776.1	-2,216.9	-2,925.4	-1,836.1
Foreign Assets	15,079.2	15,115.6	15,985.5	15,637.0	16,649.7
Foreign Liabilities	17,418.5	17,891.6	18,202.4	18,562.3	18,485.7
Net Domestic Assets	49,584.1	50,959.4	52,316.2	52,621.7	53,135.9
Net Domestic Credit	82,458.5	83,773.6	85,907.8	87,053.6	88,413.1
Net Claims on Government	-2,007.5	-2,413.4	-2,150.0	-2,188.1	-2,300.9
Claims on Public Enterprises	0.8	0.8	0.6	0.6	0.6
Claims on Private Sector	84,818.9	86,574.4	88,638.5	90,015.0	91,568.0
Net claims on National Bank of Cambodia	-353.7	-388.2	-581.4	-773.9	-854.6
Other Assets (net)	-32,874.4	-32,814.2	-33,591.7	-34,432.0	-35,277.2
Reserves	34,191.9	34,185.2	34,462.3	35,338.9	34,797.7
Cash	878.6	877.1	1,060.5	969.1	894.1
Deposits at National Bank of Cambodia	31,785.4	31,170.5	31,297.1	32,059.0	30,868.1
Other Credits at National Bank of Cambodia	1,527.8	2,137.6	2,104.7	2,310.8	3,035.6
Total Deposits	81,436.7	82,368.5	84,561.5	85,035.1	86,097.6
Demand Deposits	1,132.8	1,004.5	1,027.7	1,175.9	1,124.5
Time and Savings Deposits	2,980.6	2,660.2	2,776.1	3,094.9	3,336.3
Foreign Currency Deposits	77,323.3	78,703.8	80,757.7	80,764.3	81,636.7
Total Assets	145,727.3	148,352.3	152,932.8	155,266.8	157,159.0
	(Monthly Percentage Change)				
Net Foreign Assets	-15.9	18.7	-20.1	32.0	-37.2
Foreign Assets	3.6	0.2	5.8	-2.2	6.5
Foreign Liabilities	0.5	2.7	1.7	2.0	-0.4
Net Domestic Assets	0.1	2.8	2.7	0.6	1.0
Net Domestic Credit	0.9	1.6	2.5	1.3	1.6
Net Claims on Government	3.5	20.2	-10.9	1.8	5.2
Claims on Public Enterprises	-10.3	-3.0	-14.3	-0.2	-6.6
Claims on Private Sector	1.0	2.1	2.4	1.6	1.7
Net claims on National Bank of Cambodia	0.2	9.7	49.8	33.1	10.4
Other Assets (net)	2.2	-0.2	2.4	2.5	2.5
Reserves	0.3	0.0	0.8	2.5	-1.5
Cash	5.6	-0.2	20.9	-8.6	-7.7
Deposits at National Bank of Cambodia	-0.7	-1.9	0.4	2.4	-3.7
Other Credits at National Bank of Cambodia	23.6	39.9	-1.5	9.8	31.4
Total Deposits	0.8	1.1	2.7	0.6	1.2
Demand Deposits	13.5	-11.3	2.3	14.4	-4.4
Time and Savings Deposits	-0.3	-10.8	4.4	11.5	7.8
Foreign Currency Deposits	0.6	1.8	2.6	0.0	1.1
Total Assets	0.7	1.8	3.1	1.5	1.2

Table 14: Analytical Balance Sheet of The Monetary Authorities

(In KHR Billions)

	Feb-19	Mar-19	Apr-19	May-19	Jun-19
Reserve money	44,729.3	44,926.5	45,590.8	46,475.7	46,928.6
Currency Outside Banks	9,699.9	9,664.1	9,809.9	9,704.2	10,036.4
Vault Cash	878.6	877.1	1,060.5	969.1	894.1
Bank Deposits	33,989.5	34,271.9	34,596.9	35,595.0	35,884.5
Required Reserves	13,790.2	13,992.3	14,186.2	14,414.6	14,589.6
Others	20,199.3	20,279.6	20,410.7	21,180.4	21,294.9
Other Deposits	161.3	113.3	123.4	207.4	113.6
Net Foreign Assets	59,557.1	60,924.9	62,410.8	63,155.5	64,535.6
Foreign Assets	60,026.6	61,392.5	62,880.2	63,625.0	65,009.8
Foreign Liabilities	469.4	467.6	469.4	469.4	474.2
Net Domestic Assets	-14,827.8	-15,998.4	-16,820.0	-16,679.8	-17,607.0
Net Credit to Government	-13,396.4	-14,967.7	-15,916.5	-16,261.0	-16,446.5
Claims	0.0	0.0	0.0	0.0	0.0
Deposits	13,396.4	14,967.7	15,916.5	16,261.0	16,446.5
Net Claims on Banks	-1,233.7	-1,071.2	-731.4	-213.6	-61.7
Other Items (net)	-197.8	40.5	-172.2	-205.2	-1,098.8
	Percentage Change				
Reserve money	-0.1	0.4	1.5	1.9	1.0
Currency Outside Banks	3.7	-0.4	1.5	-1.1	3.4
Vault Cash	5.6	-0.2	20.9	-8.6	-7.7
Bank Deposits	-1.2	0.8	0.9	2.9	0.8
Required Reserves	1.1	1.5	1.4	1.6	1.2
Others	-2.7	0.4	0.6	3.8	0.5
Other Deposits	-3.5	-29.7	8.9	68.0	-45.2
Net Foreign Assets	-0.3	2.3	2.4	1.2	2.2
Foreign Assets	-0.3	2.3	2.4	1.2	2.2
Foreign Liabilities	-0.2	-0.4	0.4	0.0	1.0
Net Domestic Assets	-1.1	7.9	5.1	-0.8	5.6
Net Credit to Government	1.0	11.7	6.3	2.2	1.1
Claims	0.0	0.0	0.0	0.0	0.0
Deposits	1.0	11.7	6.3	2.2	1.1
Net Claims on Banks	-12.2	-13.2	-31.7	-70.8	-71.1
Other Items (net)	-38.1	-120.5	-525.5	19.2	435.4

Table 15: Credit Granted by Deposit Money Banks Classified by Industry

(In KHR Billion)

	Feb-19	Mar-19	Apr-19	May-19	Jun-19
1. Financial Institutions	2,829.3	2,971.6	3,378.3	3,596.4	3,816.3
1.1. National Bank of Cambodia	0.0	0.0	0.0	0.0	0.0
1.2. Depository Institutions	1,766.6	1,914.8	2,242.7	2,429.0	2,540.6
1.3. Other Financial Institutions	1,062.7	1,056.8	1,135.6	1,167.4	1,275.7
2. Non-Financial Institutions	66,419.2	67,878.3	69,306.7	70,233.0	71,662.0
2.1. Agriculture, Forestry and Fishing	7,573.9	7,608.3	7,551.2	7,508.4	7,532.2
2.2. Mining and Quarrying	223.3	211.0	218.2	220.9	227.1
2.3. Manufacturing	4,427.4	4,362.5	4,467.7	4,615.0	4,795.5
2.4. Utilities	708.3	720.6	743.9	770.0	802.5
2.5. Construction	7,873.9	8,424.9	8,696.3	8,737.3	8,883.0
2.6. Wholesale Trade	9,982.9	10,040.6	10,318.3	10,297.9	10,752.8
2.7. Retail Trade	13,990.1	14,191.8	14,472.1	14,695.6	14,855.7
2.8. Hotels and Restaurants	4,061.7	4,300.3	4,400.2	4,468.0	4,513.4
2.9. Transport and Storage	1,711.6	1,728.6	1,776.9	1,798.0	1,823.2
2.10. Information Media and Telecommunications	702.6	707.0	642.2	691.5	777.8
2.11. Rental and Operational Leasing Activities, Excluding Real Estate Leasing and Rentals	2,775.3	2,944.5	3,023.0	3,199.9	3,249.9
2.12. Real Estate Activities	6,449.8	6,643.7	6,959.6	7,069.5	7,246.9
2.13. Other Non-Financial Services	5,938.4	5,994.2	6,037.3	6,161.1	6,202.0
3. Personal Essentials	16,658.0	16,922.9	17,388.8	17,891.8	18,582.2
3.1. Personal Lending	7,433.8	7,431.3	7,618.7	7,861.8	8,226.5
3.2. Credit Cards	188.0	190.0	201.0	205.3	202.6
3.3. Mortgages, Owner-Occupied Housing only	9,036.3	9,301.6	9,569.1	9,824.7	10,153.1
4. Other Lending	933.8	953.7	973.9	949.0	972.5
Total Gross Loan	86,840.3	88,726.6	91,047.6	92,670.3	95,033.0

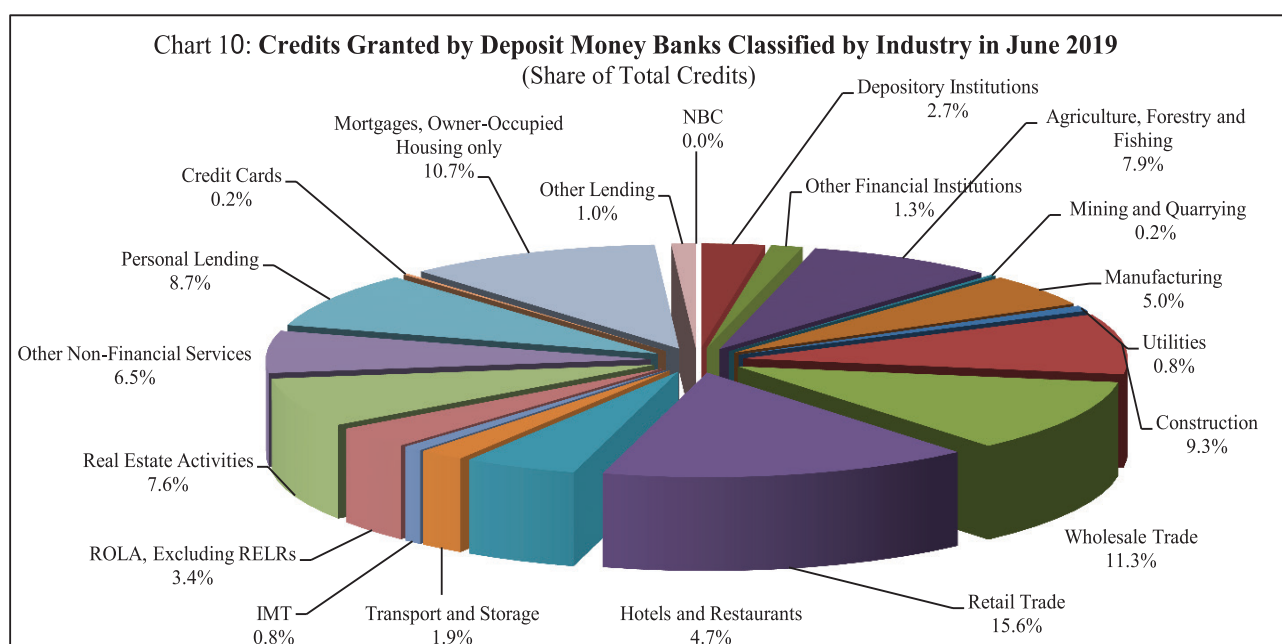


Table 16: Monthly Change of Credit Granted by Deposit Money Banks Classified by Industry

	Feb-19	Mar-19	Apr-19	May-19	Jun-19
	(Monthly Change in KHR Billion)				
1. Financial Institutions	-18.2	142.4	406.6	218.2	219.9
1.1. National Bank of Cambodia	0.0	0.0	0.0	0.0	0.0
1.2. Depository Institutions	-35.6	148.3	327.9	186.3	111.6
1.3. Other Financial Institutions	17.4	-5.9	78.8	31.9	108.3
2. Non-Financial Institutions	618.3	1,459.0	1,428.4	926.4	1,428.9
2.1. Agriculture, Forestry and Fishing	-36.4	34.5	-57.2	-42.8	23.8
2.2. Mining and Quarrying	-9.2	-12.3	7.2	2.7	6.2
2.3. Manufacturing	10.8	-64.8	105.2	147.3	180.5
2.4. Utilities	138.4	12.4	23.2	26.1	32.5
2.5. Construction	120.8	551.0	271.3	41.0	145.7
2.6. Wholesale Trade	-6.7	57.8	277.7	-20.4	454.9
2.7. Retail Trade	136.2	201.7	280.2	223.5	160.1
2.8. Hotels and Restaurants	4.1	238.6	99.9	67.8	45.4
2.9. Transport and Storage	20.7	17.0	48.3	21.1	25.2
2.10. Information Media and Telecommunications	-44.9	4.5	-64.9	49.3	86.4
2.11. Rental and Operational Leasing Activities, Excluding Real Estate Leasing and Rentals	78.6	169.2	78.4	176.9	50.0
2.12. Real Estate Activities	78.4	193.9	315.9	109.8	177.4
2.13. Other Non-Financial Services	127.6	55.8	43.1	123.8	40.9
3. Personal Essentials	223.0	264.9	465.9	503.1	690.3
3.1. Personal Lending	-32.2	-2.5	187.4	243.1	364.7
3.2. Credit Cards	-3.3	2.0	10.9	4.4	-2.7
3.3. Mortgages, Owner-Occupied Housing only	258.5	265.4	267.5	255.6	328.3
4. Other Lending	5.9	19.9	20.2	-24.9	23.5
Total Gross Loan	829.1	1,886.2	2,321.1	1,622.7	2,362.7
	(Monthly Change in Percent)				
1. Financial Institutions	-0.6	5.0	13.7	6.5	6.1
1.1. National Bank of Cambodia	0.0	0.0	0.0	0.0	0.0
1.2. Depository Institutions	-2.0	8.4	17.1	8.3	4.6
1.3. Other Financial Institutions	1.7	-0.6	7.5	2.8	9.3
2. Non-Financial Institutions	0.9	2.2	2.1	1.3	2.0
2.1. Agriculture, Forestry and Fishing	-0.5	0.5	-0.8	-0.6	0.3
2.2. Mining and Quarrying	-4.0	-5.5	3.4	1.3	2.8
2.3. Manufacturing	0.2	-1.5	2.4	3.3	3.9
2.4. Utilities	24.3	1.7	3.2	3.5	4.2
2.5. Construction	1.6	7.0	3.2	0.5	1.7
2.6. Wholesale Trade	-0.1	0.6	2.8	-0.2	4.4
2.7. Retail Trade	1.0	1.4	2.0	1.5	1.1
2.8. Hotels and Restaurants	0.1	5.9	2.3	1.5	1.0
2.9. Transport and Storage	1.2	1.0	2.8	1.2	1.4
2.10. Information Media and Telecommunications	-6.0	0.6	-9.2	7.7	12.5
2.11. Rental and Operational Leasing Activities, Excluded Real Estate Leasing and Rentals	2.9	6.1	2.7	5.9	1.6
2.12. Real Estate Activities	1.2	3.0	4.8	1.6	2.5
2.13. Other Non-Financial Services	2.2	0.9	0.7	2.1	0.7
3. Personal Essentials	1.4	1.6	2.8	2.9	3.9
3.1. Personal Lending	-0.4	0.0	2.5	3.2	4.6
3.2. Credit Cards	-1.7	1.1	5.7	2.2	-1.3
3.3. Mortgages, Owner-Occupied Housing only	2.9	2.9	2.9	2.7	3.3
4. Other Lending	0.6	2.1	2.1	-2.6	2.5
Total Gross Loan	1.0	2.2	2.6	1.8	2.5

Table 17: Deposits with Deposit Money Banks

(In KHR Billion)

	Feb-19	Mar-19	Apr-19	May-19	Jun-19
Deposits in KHR					
Demand deposits	1,969.3	2,253.9	1,949.8	2,090.6	2,157.1
Savings deposits	1,357.8	1,325.8	1,318.9	1,451.9	1,543.4
Fixed deposits	2,097.3	1,754.7	1,797.9	1,977.1	2,094.6
Others	64.7	46.2	49.6	51.1	54.2
Total	5,489.1	5,380.6	5,116.2	5,570.7	5,849.2
Deposits in Foreign Currency*					
Demand deposits	20,732.8	21,003.6	22,346.5	22,077.3	22,126.9
Savings deposits	30,210.7	30,914.4	30,501.3	30,471.0	30,792.7
Fixed deposits	33,481.8	34,006.8	35,137.5	35,812.3	36,702.2
Others	1,099.6	1,023.3	1,154.0	1,098.7	1,135.6
Total	85,524.9	86,948.1	89,139.3	89,459.4	90,757.4
Grand Total	91,014.0	92,328.7	94,255.4	95,030.1	96,606.7

* Deposits in foreign currency include deposits of Cambodian residents and non-residents

Chart 11: Deposits with Deposit Money Banks Classified by Currency, as of June 2019
(Share of Grand Total Deposits)

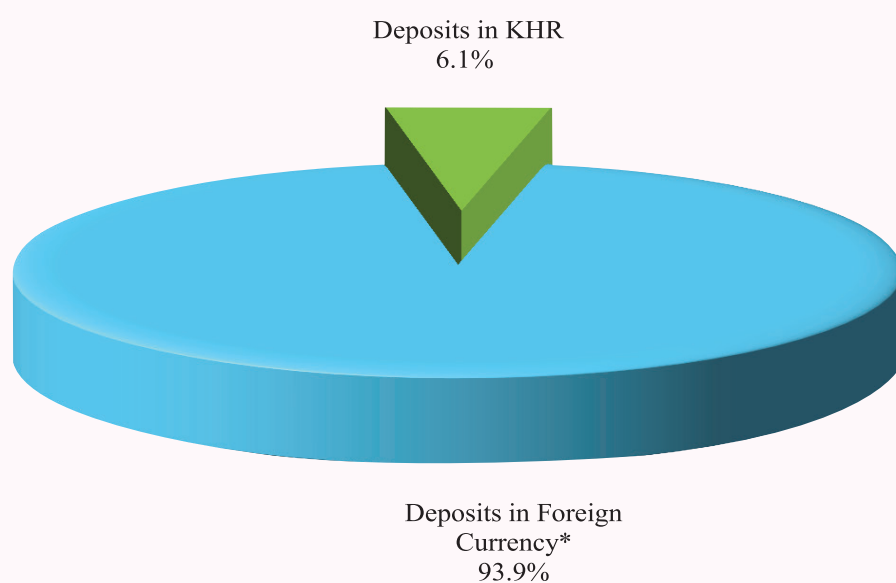


Table 18: Monthly Change of Deposits with Deposit Money Banks

	Feb-19	Mar-19	Apr-19	May-19	Jun-19
	(Change in KHR Billion)				
Deposits in KHR					
Demand deposits	133.5	284.6	-304.1	140.8	66.5
Savings deposits	-49.0	-32.0	-6.9	133.0	91.5
Fixed deposits	65.8	-342.7	43.2	179.2	117.5
Others	1.0	-18.5	3.4	1.5	3.1
Total	151.4	-108.5	-264.4	454.6	278.5
Deposits in Foreign Currency					
Demand deposits	111.5	270.8	1,342.9	-269.2	49.6
Savings deposits	67.9	703.7	-413.2	-30.2	321.7
Fixed deposits	152.0	524.9	1,130.7	674.8	889.8
Others	6.2	-76.2	130.7	-55.3	36.9
Total	337.6	1,423.2	2,191.2	320.1	1,298.1
Grand Total	488.9	1,314.7	1,926.8	774.6	1,576.6
	(Percentage Change)				
Deposits in KHR					
Demand deposits	7.3	14.5	-13.5	7.2	3.2
Savings deposits	-3.5	-2.4	-0.5	10.1	6.3
Fixed deposits	3.2	-16.3	2.5	10.0	5.9
Others	1.6	-28.5	7.3	3.0	6.0
Total	2.8	-2.0	-4.9	8.9	5.0
Deposits in Foreign Currency					
Demand deposits	0.5	1.3	6.4	-1.2	0.2
Savings deposits	0.2	2.3	-1.3	-0.1	1.1
Fixed deposits	0.5	1.6	3.3	1.9	2.5
Others	0.6	-6.9	12.8	-4.8	3.4
Total	0.4	1.7	2.5	0.4	1.5
Grand Total	0.5	1.4	2.1	0.8	1.7

Chart 12: Deposits in KHR Classified by Type, as of June 2019
(Share of Total KHR Deposits)

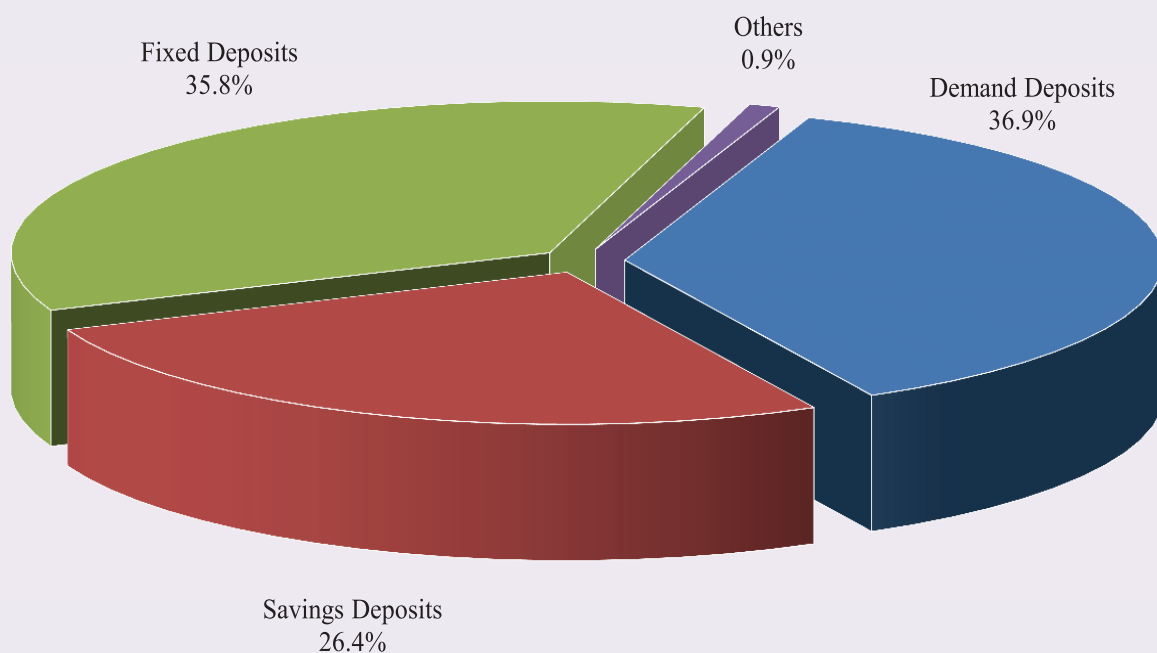


Chart 13: Deposits in Foreign Currency Classified by Type, as of June 2019
(Share of Total Foreign Currency Deposits)

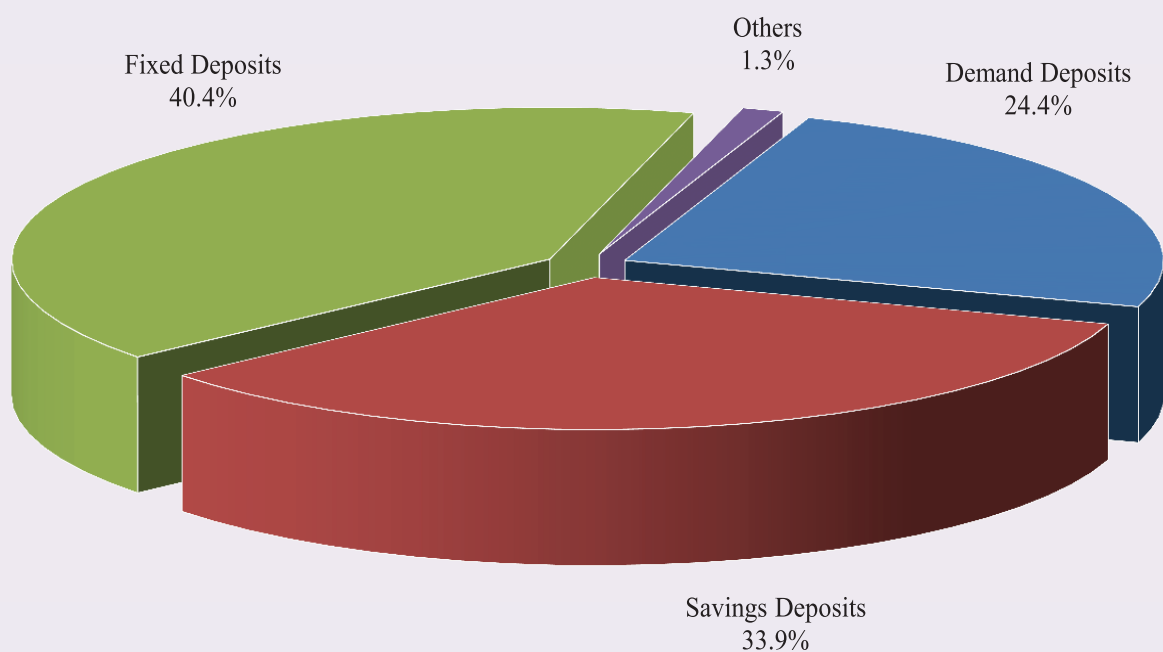


Table 19: Credit Granted by Micro-Finance Institutions*

Period	Numbers of				Loan Outstanding (In KHR Billion)	Interest Rate	
	District	Commune	Village	Household		Monthly	Annually
Dec-11	1,648	10,920	60,551	1,141,913	2,591	2% - 3%	24% - 36%
Dec-12	2,121	13,885	76,187	1,344,255	3,617	2% - 3%	29% - 37%
Dec-13	2,282	16,384	89,829	1,610,844	5,364	2% - 3%	27%-39%
Dec-14	2,754	18,254	107,964	1,844,893	8,340	2% - 3%	27%-39%
Dec-15	4,576	27,510	141,514	2,149,180	12,365	2% - 4%	25%-41%
Dec-16	5,971	32,599	155,499	2,129,907	12,954	2% - 4%	25%-41%
2017*							
Feb	3,585	21,436	115,727	1,837,273	13,252	2% - 3.7%	25%-41%
Mar	3,160	19,093	106,500	1,794,532	13,625	2% - 3.7%	24.5%-41%
	Numbers of Branches			Number of Borrowers**	Loan Outstanding (In KHR Billion)	Interest Rate	
	Head Office	Province/ Krong	District/Khan			Monthly	Annually
May	71	361	1,003	1,826,138	14,275	1.6%-3.0%	19.9%-35.1%
Jun	74	372	995	1,818,719	14,663	1.6%-3.0%	19.8%-33.7%
Jul	77	375	1,036	1,815,820	15,214	1.6%-2.8%	19.5%-33.0%
Aug	74	364	926	1,804,506	15,779	1.5%-2.7%	18.9%-32.3%
Sep	76	357	873	1,793,039	16,163	1.4%-2.6%	17.5%-30.3%
Oct	76	358	878	1,785,078	16,623	1.4%-2.5%	16.8%-29.2%
Nov	76	365	986	1,789,687	17,015	1.4%-2.5%	17.5%-29.2%
Dec	76	366	975	1,776,467	17,236	1.4%-2.5%	16.9%-28.8%
2018							
Jan	76	374	945	1,764,321	17,621	1.4%-2.3%	17.5%-26.9%
Feb	76	377	953	1,764,916	18,002	1.4%-2.3%	17.3%-26.6%
Mar	77	388	955	1,774,935	18,475	1.4%-2.9%	16.9%-26.3%
Apr	77	368	930	1,794,347	18,682	1.3%-2.2%	16.4%-26.1%
May	77	365	936	1,791,093	19,041	1.3%-2.2%	16.4%-26.1%
Jun	77	372	937	1,798,122	19,250	1.3%-2.2%	16.1%-25.4%
Jul	77	377	944	1,805,677	19,501	1.3%-2.2%	16.1%-25.4%
Aug	79	376	947	1,825,842	20,278	1.2%-2.1%	15.4%-24.8%
Sep	77	372	943	1,828,019	20,621	1.2%-2.1%	15.3%-25.0%
Oct	78	394	947	1,851,259	21,045	1.2%-2.0%	13.4%-24.0%
Nov	79	407	946	1,867,806	21,567	1.2%-2.1%	15.1%-24.0%
Dec	80	399	944	1,872,916	21,813	1.2%-2.0%	15.1%-24.0%
2019							
Jan	80	399	944	1,881,822	22,630	1.2%-2.0%	15.0%-24.0%
Feb	81	399	944	1,893,175	23,206	1.2%-1.9%	14.7%-22.7%
Mar	81	399	947	1,917,689	24,020	1.2%-1.9%	15.0%-22.7%
Apr	81	400	949	1,944,818	24,675	1.2%-1.9%	14.9%-22.7%
May	81	401	949	1,968,804	25,293	1.2%-1.9%	14.9%-22.7%
June	81	405	956	1,990,822	25,922	1.2%-1.8%	15.0%-21.4%

* Including MFI and MDI

** Including Individuals and Legal Entities

Table 20: KHR-Denominated Checks Clearing through Clearing House

Date	Number of Cleared Check	Number of Working Day	Number of Cleared Check Per Day	Total Amount (In KHR Billion)	Daily Average Amount (In KHR Billion)	Returned Check	
						Number	Amount (In KHR Billion)
	1	2	3 = 1/2	4	5 = 4/2	6	7
Dec-11	3,320	21	158	178.2	8.5	2	0.3
Total	34,742	236	147	1,820.5	7.7	87	4.8
Dec-12	3,056	20	153	163.7	8.2	16	1.15
Total	39,288	234	168	2,344.0	10.0	106	12.4
Dec-13	3,651	20	183	250.5	12.5	27	0.27
Total	42,993	231	186	3,505.7	15.2	212	43.7
Dec-14	4,074	20	204	391.5	19.6	8	2.14
Total	44,778	232	193	3,789.3	16.3	145	33.3
Dec-15	10,709	22	487	519.9	23.6	29	0.79
Total	106,919	233	459	4,854.2	20.8	252	47.4
Dec-16	3,938	22	179	490.0	22.3	13	3.15
Total	82,291	242	340	5,421.8	22.4	186	117.5
Dec-17	3,074	20	154	599.0	30.0	22	12.48
Total	37,485	239	1,885	6,607.8	333.1	138	28.51
2018							
Jan	3,319	20	166	668.3	33.4	9	0.06
Feb	2,705	20	135	682.3	34.1	12	30.60
Mar	3,412	21	162	968.6	46.1	16	1.30
Apr	3,096	18	172	511.4	28.4	15	10.21
May	3,182	17	187	975.3	57.4	28	4.33
Jun	3,008	19	158	805.8	42.4	7	0.27
Jul	3,180	21	151	676.3	32.2	13	3.01
Aug	3,236	23	141	797.3	34.7	15	0.58
Sep	3,309	19	174	617.2	32.5	42	9.54
Oct	3,263	17	192	773.1	45.5	11	9.31
Nov	3,545	18	197	1,013.4	56.3	13	77.12
Dec	2,994	19	158	935.1	49.2	16	6.58
Total	38,249	232	165	9,424.1	40.6	197	152.90
2019							
Jan	3,620	21	172	1,318.5	62.8	13	0.63
Feb	3,279	19	173	941.9	49.6	12	0.45
Mar	3,233	20	162	1,168.3	58.4	13	2.70
Apr	3,118	18	173	894.9	49.7	18	3.73
May	3,375	17	199	1,299.8	76.5	21	11.41
Jun	3,201	19	168	892.3	47.0	16	10.04
Total	19,826	114	174	6,515.7	57.2	93	28.96

Table 21: USD-Denominated Checks Clearing through Clearing House

Date	Number of Checks Cleared	Number of days Cleared	Number of Cleared Check per Day	Total Amount (In USD Million)	Daily Average Amount (In USD Million)	Returned Checks	
						Number	Amount (In USD Million)
	1	2	3 = 1/2	4	5 = 4/2	6	7
Dec-11	52,700	21	2,510	996.9	47.5	270	7.5
Total	558,894	236	2,368	9,572.7	40.6	3,214	91.9
Dec-12	60,647	20	3,032	1,112.8	55.6	459	25.8
Total	658,329	234	2,813	12,574.9	53.7	4,245	188.1
Dec-13	73,088	20	3,654	1,417.7	70.9	511	17.0
Total	803,352	231	3,478	14,989.2	64.9	6,240	249.7
Dec-14	83,578	20	4,179	1,727.0	86.3	545	36.1
Total	888,970	231	3,848	17,989.5	77.9	5,894	421.8
Dec-15	98,062	22	4,457	1,859.8	84.5	728	21.2
Total	992,434	233	4,259	20,758.4	89.1	7,170	268.0
Dec-16	92,820	22	4,219	2,220.4	100.9	778	44.8
Total	1,025,209	242	4,236	21,790.4	90.0	8,738	439.6
Dec-17	101,093	20	5,055	2,824.6	141.2	789	37.6
Total	1,107,752	239	4,635	26,812.7	112.2	8,863	440.4
2018							
Jan	102,974	20	5,149	2,859.1	143.0	858	77.0
Feb	95,365	20	4,768	2,701.2	135.1	745	35.4
Mar	107,286	21	5,109	3,064.7	145.9	860	50.9
Apr	86,253	18	4,792	2,736.2	152.0	661	39.6
May	109,311	17	6,430	3,270.6	192.4	964	61.4
Jun	99,981	19	5,262	3,356.2	176.6	795	46.5
Jul	106,272	21	5,061	3,562.3	169.6	830	37.7
Aug	113,994	23	4,956	3,915.9	170.3	823	98.0
Sep	98,989	19	5,210	5,280.3	277.9	1,322	2,069.7
Oct	101,438	17	5,967	3,190.0	187.7	901	70.3
Nov	104,391	18	5,800	3,609.1	200.5	811	36.0
Dec	111,978	19	5,894	3,917.1	206.2	904	63.6
Total	1,238,232	232	5,337	41,462.7	178.7	10,474	2686.1
2019							
Jan	118,135	21	5,625	5,128.7	244.2	928	76.5
Feb	94,722	19	4,985	3,172.1	167.0	687	33.1
Mar	111,842	20	5,592	3,945.0	197.3	848	81.2
Apr	104,540	18	5,808	3,915.2	217.5	896	49.1
May	109,758	17	6,456	3,839.4	225.8	1,013	60.3
Jun	106,018	19	5,580	3,840.7	202.1	788	69.8
Total	645,015	114	5,658	23,841.1	209.1	5,160	370.0

Table 22: Visitor Arrivals in Cambodia

	2019			% of Total		% Change	
	Apr	May	June	May	June	May/Apr	Jun/May
(Mode of Arrival)							
Phnom Penh International Airport	177,077	164,985	158,189	34.9	35.2	-6.8	-4.1
Kong Keng International Airport	53,664	61,699	71,737	13.0	15.9	15.0	16.3
Siem Reap International Airport	146,195	116,193	105,086	24.6	23.4	-20.5	-9.6
Land	147,252	126,213	111,841	26.7	24.9	-14.3	-11.4
Boat	13,468	3,862	3,160	0.8	0.7	-71.3	-18.2
Preah Vihea	0	0	0	0.0	0.0	0.0	0.0
Total	537,656	472,952	450,013	100.0	100.0	-12.0	-4.9
(Arrival by Purpose of Visit)							
Tourist	399,764	336,175	306,732	71.1	68.2	-15.9	-8.8
Business and Professional	123,921	125,880	129,200	26.6	28.7	1.6	2.6
Others and not specified	13,971	10,897	14,081	2.3	3.1	-22.0	29.2
Total	537,656	472,952	450,013	100.0	100.0	-12.0	-4.9
(Top-Ten Countries of Passenger Arrivals)							
China (PRC)	203,603	216,531	188,916	45.8	42.0	6.3	-12.8
Vietnam	78,865	57,028	78,886	12.1	17.5	-27.7	38.3
Thailand	29,143	23,311	23,845	4.9	5.3	-20.0	2.3
United States of America	18,498	15,893	18,771	3.4	4.2	-14.1	18.1
Lao PDR	33,454	33,011	15,934	7.0	3.5	-1.3	-51.7
South Korea	15,325	14,007	14,233	3.0	3.2	-8.6	1.6
Malaysia	16,650	13,171	13,380	2.8	3.0	-20.9	1.6
Japan	17,110	12,506	10,765	2.6	2.4	-26.9	-13.9
Taiwan	12,784	9,488	9,664	2.0	2.1	-25.8	1.9
Philippines	10,868	8,473	8,574	1.8	1.9	-22.0	1.2
Others	101,356	69,533	67,045	14.7	14.9	-31.4	-3.6
Total	537,656	472,952	450,013	100.0	100.0	-12.0	-4.9

Source: Ministry of Tourism

Table 23: Cambodia's Imports and Exports

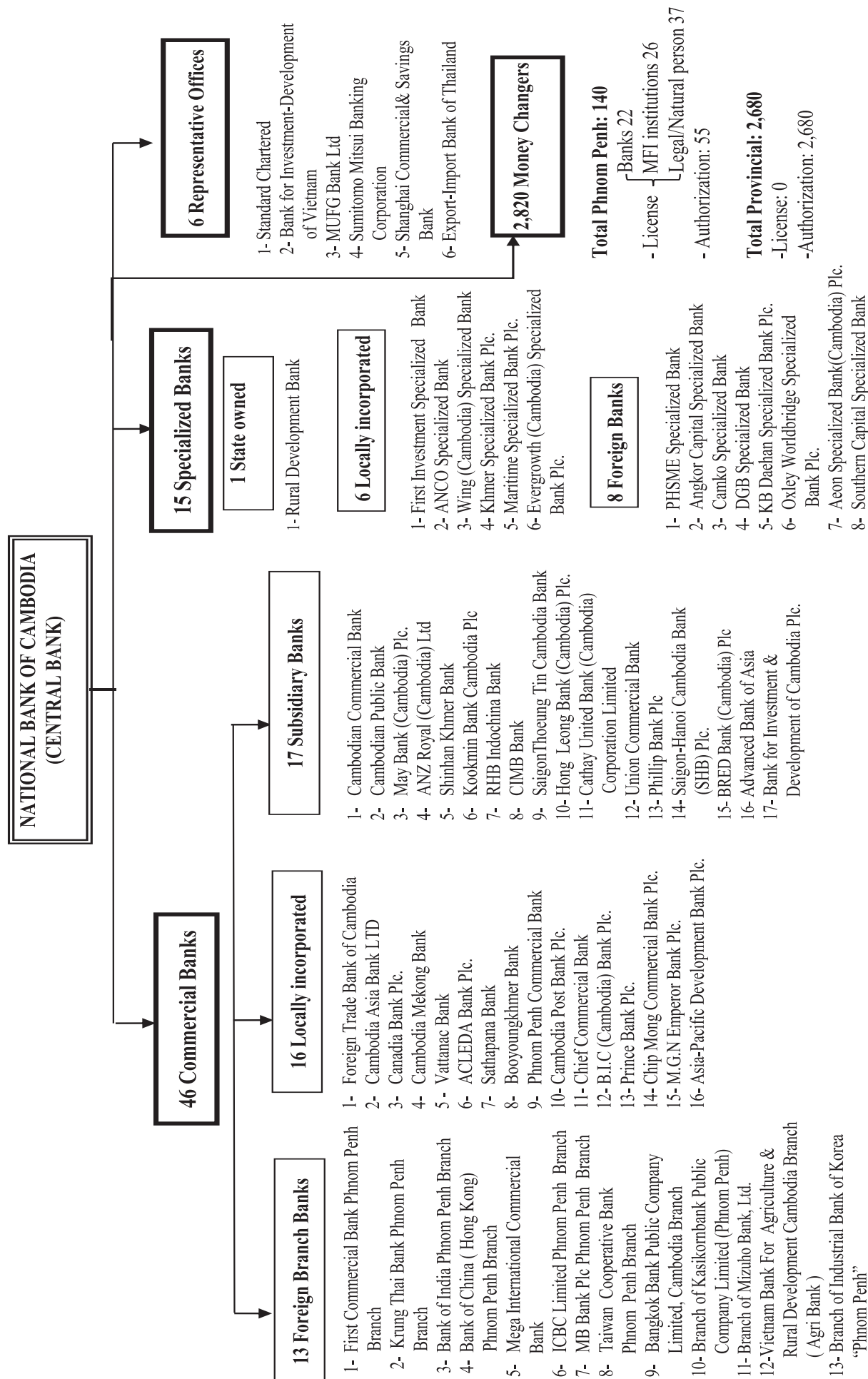
(In KHR Billion)

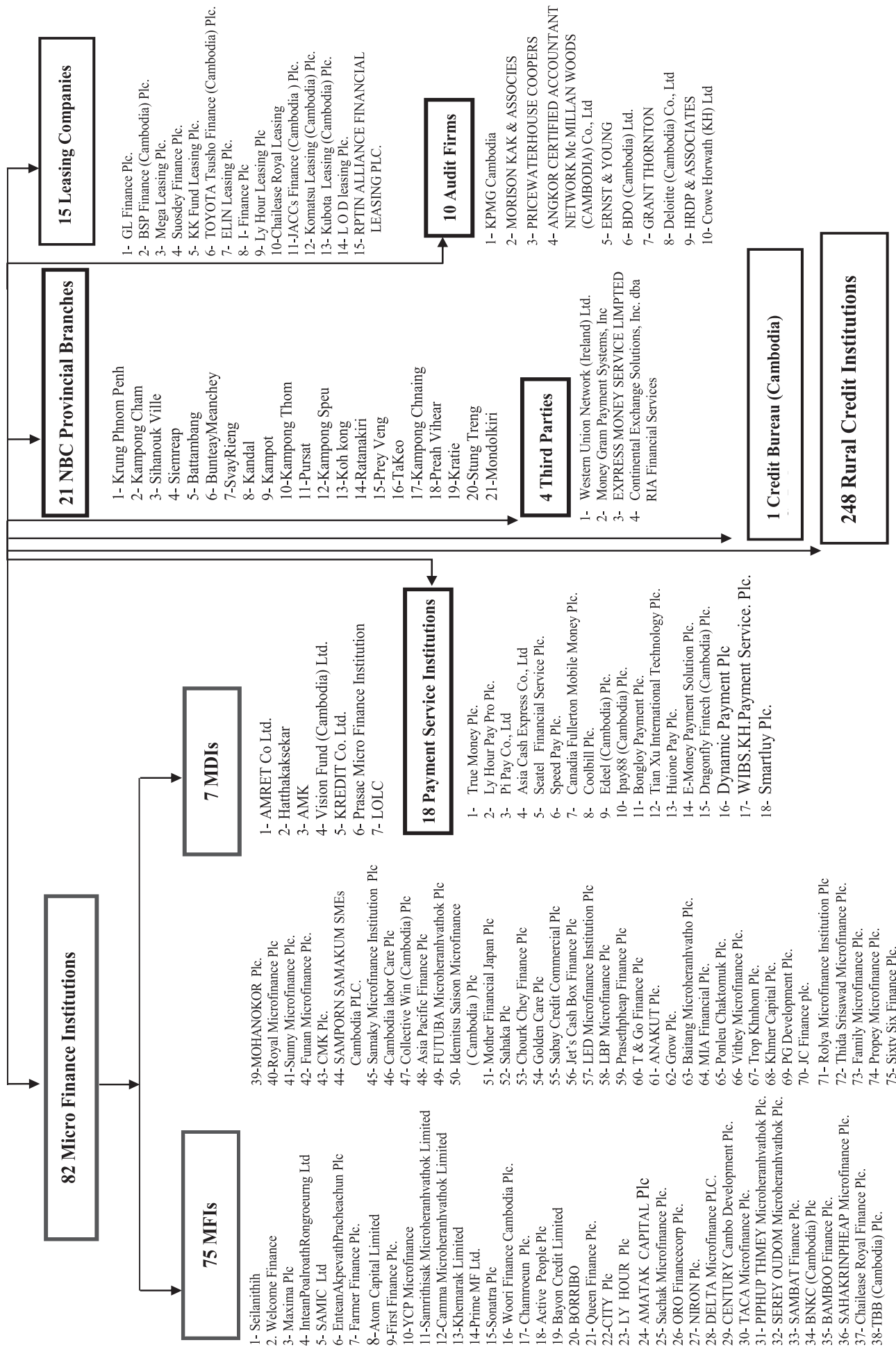
	2019			Change in KHR Billion		Change in %	
	Apr	May	Jun	May/Apr	Jun/May	May/Apr	Jun/May
Imports by Commodity							
Medicine	61.8	65.6	73.7	3.9	8.0	6.2	12.3
Cigarette	68.9	103.8	80.8	34.9	-23.0	50.6	-22.2
Food and Beverage	300.6	286.7	298.7	-13.9	12.0	-4.6	4.2
Equipment Construction	287.5	440.1	395.3	152.6	-44.8	53.1	-10.2
Cement	27.8	37.4	44.0	9.7	6.6	34.8	17.6
Steel	156.9	204.2	164.5	47.3	-39.8	30.2	-19.5
Phones	31.0	12.7	16.2	-18.3	3.5	-59.0	27.7
T.V	1.9	4.7	3.5	2.8	-1.3	143.6	-26.5
Other Electronic Equipment	18.0	28.5	26.6	10.5	-1.9	58.4	-6.6
Garment	199.2	231.7	179.9	32.5	-51.9	16.3	-22.4
Fabric	1,527.0	1,698.3	1,620.1	171.3	-78.2	11.2	-4.6
Vehicle	694.2	733.6	762.6	39.5	28.9	5.7	3.9
Equipment of Cold	15.4	25.9	26.0	10.5	0.1	67.7	0.4
Gold	91.2	39.8	0.0	-51.4	-39.8	-56.4	-100.0
Oil	597.3	602.1	605.9	4.8	3.7	0.8	0.6
Fertilizer	51.3	91.2	99.3	39.9	8.1	77.8	8.9
Others	2,829.3	3,131.2	2,687.1	301.8	-444.0	10.7	-14.2
Total Imports (fob)	6,959.3	7,737.7	7,084.1	778.3	-653.6	11.2	-8.4
Exports by Commodity							
Garment	2,245.5	3,193.6	3,516.2	948.2	322.6	42.2	10.1
Footwear	307.6	470.3	511.8	162.7	41.5	52.9	8.8
Electrical Part	111.6	134.8	100.1	23.2	-34.7	20.7	-25.7
Vehicle Part	21.8	29.3	22.6	7.5	-6.7	34.2	-22.9
Bicycle	96.0	96.6	122.8	0.5	26.3	0.6	27.2
Wood Products	38.3	56.4	48.3	18.1	-8.1	47.2	-14.4
Rice	107.2	97.5	87.8	-9.7	-9.7	-9.0	-9.9
Rubber	55.0	54.8	61.0	-0.1	6.2	-0.2	11.3
Fish and Other Agricultural Products	40.4	42.2	31.4	1.9	-10.8	4.6	-25.7
Others	539.1	670.0	797.4	130.9	127.4	24.3	19.0
Total Exports (fob)	3,562.5	4,845.5	5,299.4	1,283.0	453.9	36.0	9.4

Source: General Department of Cambodia Customs and Excise

* Revised Data

Table 24: THE BANKING SYSTEM IN CAMBODIA
At 30 June, 2019





អ៊ីនធឺណែត

INTERNET

: www.nbc.org.kh គឺជាគេហទំព័ររបស់ធនាគារជាតិនៃកម្ពុជា ។ ទិន្នន័យថ្មីៗក្នុងគេហទំព័រ និងទិន្នន័យបន្តបន្ទាប់ទៀត ត្រូវបាននិងកំពុងដាក់បញ្ចូលទៅក្នុងប្រព័ន្ធទិន្នន័យ តាមធនធាន ដែលមាន ។ លើសពីនេះទៀត គេហទំព័រនេះ គឺជាទីតាំងដ៏ល្អបំផុតដើម្បីទទួលបានទិន្នន័យសង្ខេប នៃការចេញផ្សាយចុងក្រោយបង្អស់ ។

www.nbc.org.kh is the National Bank of Cambodia website. The website new data and metadata are progressively being added to the database, as resources permit. This website is the best place to start for access to summary data from the latest publications.

សេវាព័ត៌មាន

INFORMATION SERVICE

: បុគ្គលិករបស់នាយកដ្ឋានស្ថិតិ នៃធនាគារជាតិនៃកម្ពុជា អាចជួយចង្អុលបង្ហាញ ឬណែនាំ អ្នកប្រើប្រាស់ក្នុងការស្វែងរកទិន្នន័យតាមតម្រូវការ ។ ការបោះពុម្ពផ្សាយរបស់ធនាគារជាតិនៃកម្ពុជា អាចរកជាប់បាន ហើយសេវាលើការជាប់ប្រចាំក៏អាចរៀបចំបានដែរ ។ ចំពោះសេវាលើទិន្នន័យ ពិសេសផ្សេងទៀតក៏អាចរកបានផងដែរ តាមរយៈការមកជាប់ព្រឹត្តិបត្រដោយផ្ទាល់ ។

The Statistics Department staff of the National Bank of Cambodia can assist users in addressing their data requirements. The National Bank of Cambodia publications are available for sale and subscription services can be arranged. Other special data services are also available, on a user pays basis.

អាសយដ្ឋានទំនាក់ទំនង

CONTACT DETAILS

ធនាគារជាតិនៃកម្ពុជា

NATIONAL BANK OF CAMBODIA

នាយកដ្ឋានស្ថិតិ

Statistics Department

អគារលេខ ៦៩-៧០ មហាវិថីហាណូយ (លេខ១០១៩) ភូមិបាយាប សង្កាត់ភ្នំពេញថ្មី

ខណ្ឌសែនសុខ រាជធានីភ្នំពេញ

#69-70, Hanoi Blvd. (1019), Phum Bayab, Sangkat Phnom Penh Thmei, Cambodia

អ៊ីម៉ែល : statistics@nbc.org.kh

E-mail : statistics@nbc.org.kh

ទូរស័ព្ទ : (៨៥៥) ២៣ ៧២២ ៥៦៣ – ១១១៥

Telephone: (855) 23 722 563 – 1115

ទូរសារ : (៨៥៥) ២៣ ៤២៦ ១១៧

Facsimile : (855) 23 426 117



ISSN 2074-5680

តម្លៃ : ១៥.០០០ រៀល (មួយម៉ឺនប្រាំពាន់រៀល)

Price: KHR 15,000 (Fifteen Thousand Riels)

ផលិតដោយ ធនាគារជាតិនៃកម្ពុជា

Produced by the National Bank of Cambodia