

ព្រះរាជាណាចក្រកម្ពុជា
KINGDOM OF CAMBODIA
ជាតិ សាសនា ព្រះមហាក្សត្រ
NATION RELIGION KING

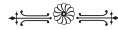


ធនាគារជាតិ នៃ កម្ពុជា
NATIONAL BANK OF CAMBODIA

ព័ត៌មានស្ថិតិសេដ្ឋកិច្ច និងរូបិយវត្ថុ
ECONOMIC AND MONETARY STATISTICS

លេខ ៣០៥ – ឆ្នាំទី២៧
ខែមីនា ឆ្នាំ២០១៩
SERIES No. 305 – 27th YEAR
MARCH 2019

Contents



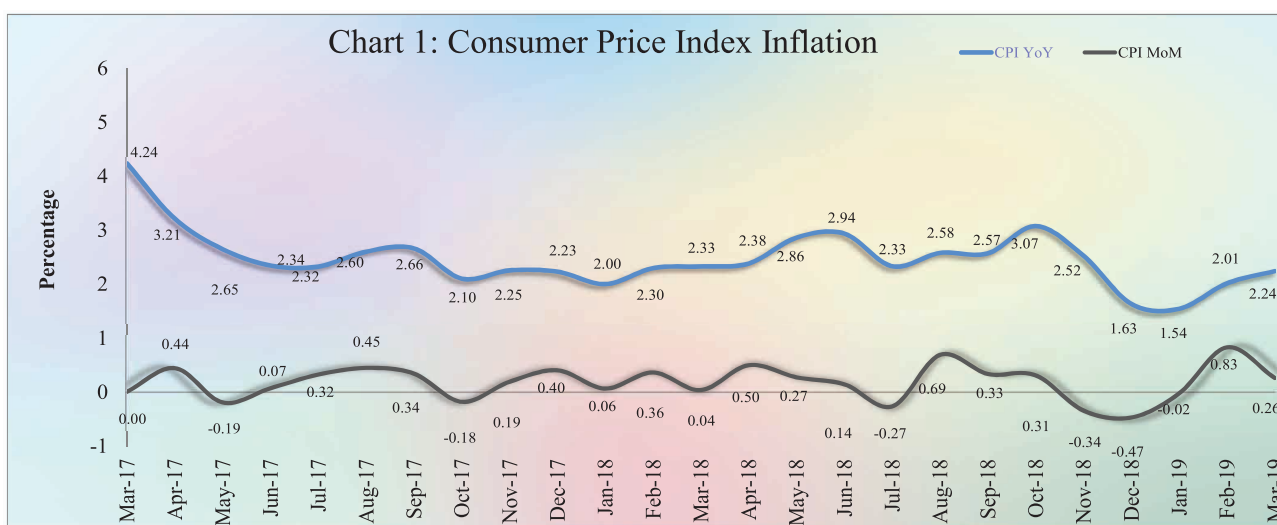
	Page
- Introduction	1
- Consumer Price Index	1
- Exchange Rate	1
- Money Supply	2
- Net Domestic Assets of the Banking Sector	2
- Net Foreign Assets of the Banking Sector	2
- Deposit Money Banks' Operations	3
- Interest Rates on Loans and Deposits	3
- Foreign Tourist Arrivals	4
- International Trade in Goods	5
Table 1 : Consumer Price Index and Inflation Rate	6
Table 2 : Consumer Items Showing Price Increased in March 2019	7
Chart 1 : Consumer Price Index	8
Chart 2 : Weight of All Group Indices in Consumer Basket	8
Table 3 : Gross Domestic Product	9
Chart 3 : GDP by Economic Activity (At Constant 2000 Prices)	9
Chart 4 : GDP by Economic Activity (At Current Prices)	9
Table 4 : Approved Investment Projects by Sectors	10
Chart 5 : Investment Fixed Assets by Sectors	10
Chart 6 : Numbers of Investment Projects by Sectors	10
Table 5 : Approved Investment Projects by Major Countries	11
Table 6 : Daily Exchange Rate in March 2019 (KHR/USD)	12
Table 7 : Monthly Exchange Rate (KHR/USD, End-Period)	13
Chart 7 : Trend of Monthly Exchange Rate	13
Table 8 : The Value of KHR Against Other Currencies (Official Buying Rates, End-Period)	14
Table 9 : Deposit Money Bank's Interest Rates on Deposits and Loans in KHR	15
Table 10 : Deposit Money Bank's Interest Rates on Deposits and Loans in US Dollar	16
Table 11 : Monetary Survey	17
Table 12 : Monetary Survey (Monthly Change)	18
Chart 8 : Monetary Survey	19
Chart 9 : Components of Money Supply	19
Table 13 : Deposit Money Banks' Balance Sheet	20
Table 14 : National Bank of Cambodia's Balance Sheet	21
Table 15 : Credit Granted by Deposit Money Banks Classified by Industry	22
Chart 10 : Credit Granted by Deposit Money Banks Classified by Industry	22
Table 16 : Monthly Change of Credit Granted by Deposit Money Banks Classified by Industry	23
Table 17 : Deposits with Deposit Money Banks	24
Chart 11 : Deposits with Deposit Money Banks Classified by Currency, as of March 2019 (% of Total Deposits)	24
Table 18 : Monthly Change of Deposits with Deposit Money Banks	25
Chart 12 : Deposits in KHR Classified by Type, as of March 2019 (% of Total KHR Deposits)	26
Chart 13 : Deposits in Foreign Currency Classified by Type, as of March 2019 (% of Total FCD)	26
Table 19 : Credit Granted by Micro-Finance Institutions and Non-Government Organizations	27
Table 20 : KHR-Denominated Checks Clearing Through Clearing House	28
Table 21 : USD-Denominated Checks Clearing Through Clearing House	29
Table 22 : Visitor Arrivals in Cambodia	30
Table 23 : Cambodia's Imports and Exports	31
Table 24 : The Banking System in Cambodia	32-33

Introduction

Head line consumer price inflation in March 2019 decelerated compared to a month earlier; while the Khmer Riel (KHR) depreciated against US dollar. During this period, financial intermediary of the banking sector continued to improve reflecting by increases in credit to private sectors and resident's foreign currency deposits. At the same time, the international trade in goods showed an increase in deficit.

Consumer Price Index

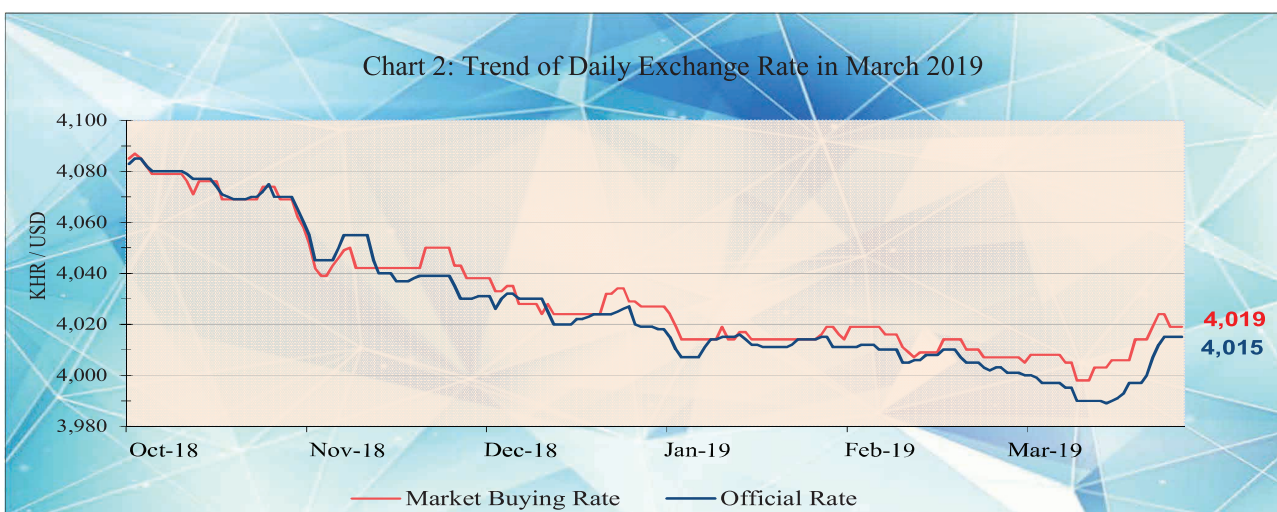
The consumer price inflation in Phnom Penh (month-on-month) eased to 0.26% in March 2019 from 0.83% in February 2019. In which, six out of twelve group indexes decreased while five group index increased and other one group index remained stable.



During the same period, the year-on-year percentage change of the CPI for all items accelerated to 2.24% from 2.01% in February 2019, reflecting by the increase in oil prices.

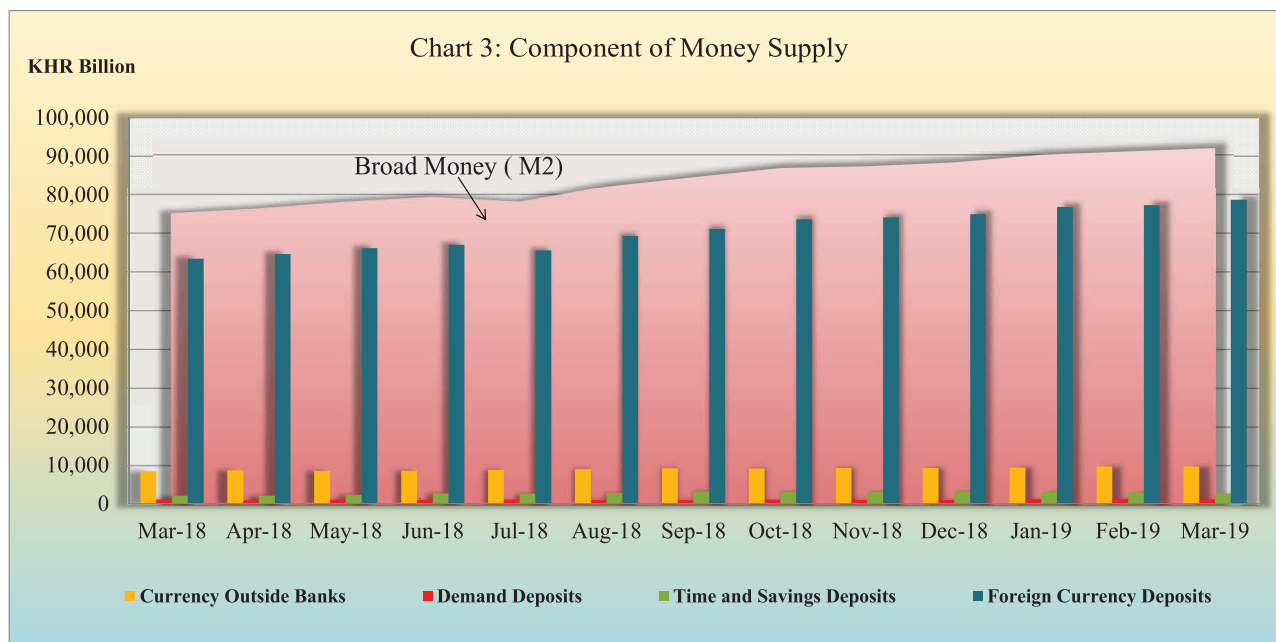
Exchange Rate

The exchange rate (market buying rate) was KHR 4,019 per USD in March 2019, depreciated by 0.3%, compared to the February.



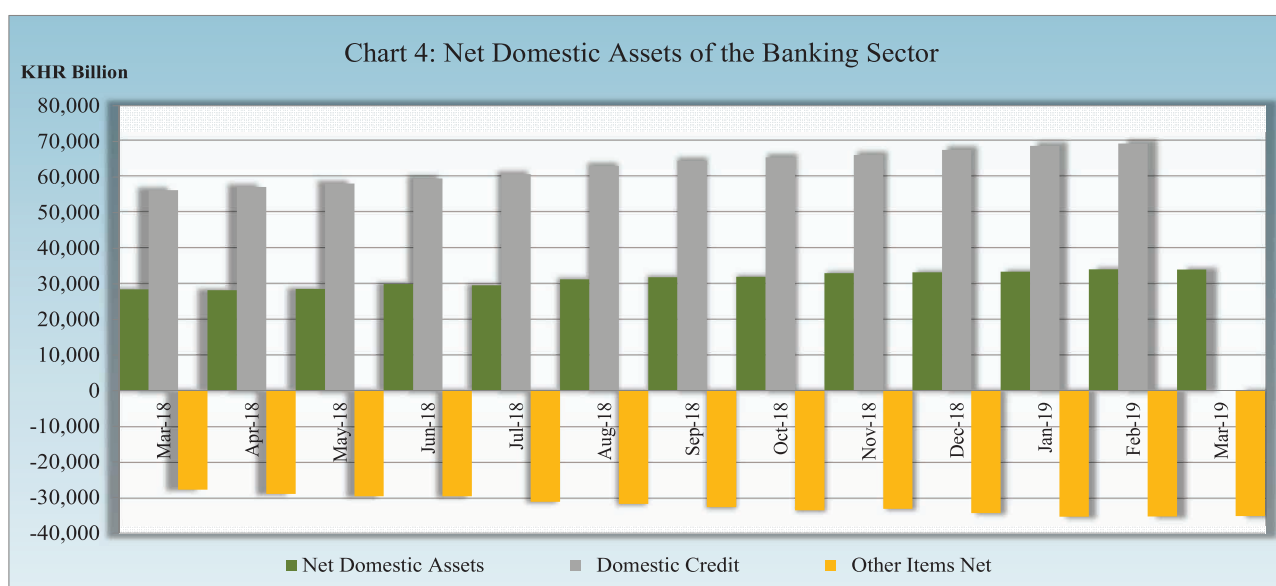
Money Supply

Broad money (M2) continued to increase to KHR 92,146.0 billion in March 2019, up by 0.9% compared to February 2019. Main components of M2 showed that resident's foreign currency deposits increased by 1.8%, while currency outside banks, demand deposits and time and saving deposits decreased by 0.4%, 13.6% and 10.8%, respectively.



Net Domestic Assets of the Banking Sector

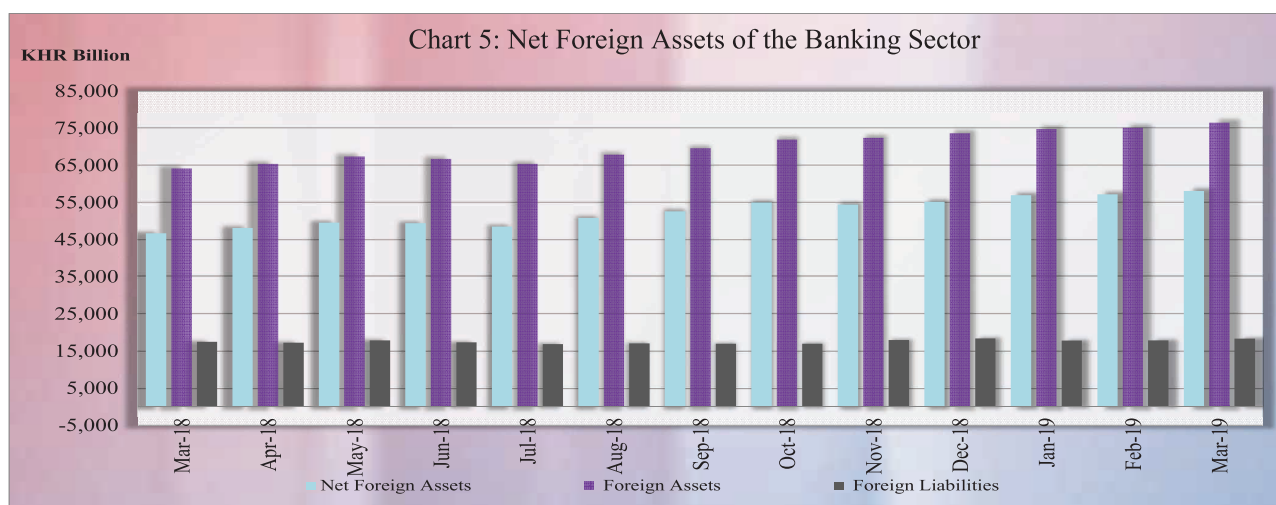
Net domestic assets of the banking sector decreased slightly to KHR 33,997.2 billion in March 2019, down by 0.2% compared to previous month. This was due to a decline of 0.3% in domestic credit while other items net increased by 0.4%.



The decline in domestic credit was mainly reflected by the decrease of 12.8% in net claims on government due to an increase in government deposits whereas credit to private sector and other items net continued to increase by 2.1% and 8.7% respectively.

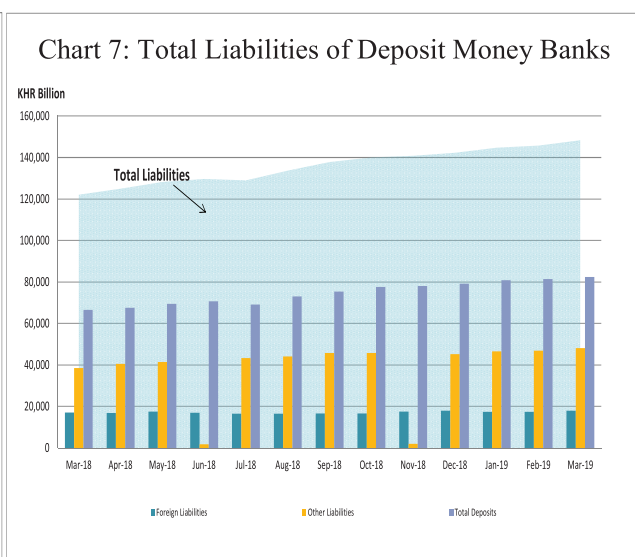
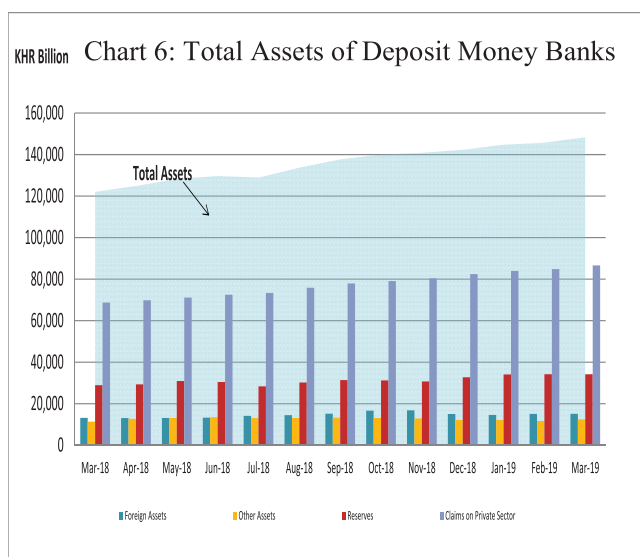
Net Foreign Assets of the Banking Sector

Net foreign assets of the banking sector increase to KHR 58,148.8 billion in March 2019, up by 1.6% from February 2019. This was due to a higher increase in total foreign asset of 1.9% than total foreign liabilities of 2.6%.



Deposit Money Banks' Operations

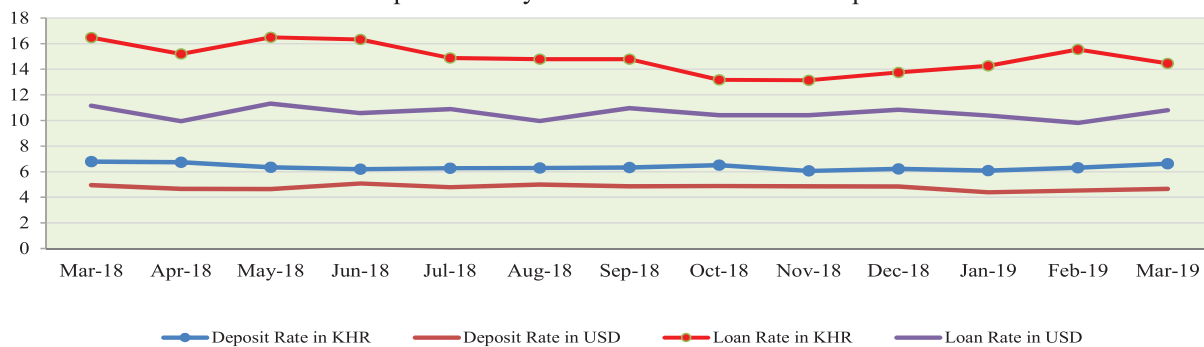
Total assets of commercial banks and specialized banks were KHR 148,352.3 billion, up by 1.8% in March 2019 compared to the previous month.



Interest Rates on Deposits and Loans

Interest rate movement on deposits and loans of banking sector in March 2019, showed that the weighted average interest rate on deposit with a maturity greater than 9 months to 1 year in Khmer Riel and US dollar increased by 0.32% to 6.62% and 0.14% to 4.66%, respectively. At the same time, the weighted average interest rate on loan to business with a maturity greater than 1 year to 5 years in Khmer Riel decreased by 1.1% to 14.45% while the same rate in US dollar increased by 0.99% to 10.8%.

Chart 8: Deposit Money Banks' Interest Rate on Deposits and Loans

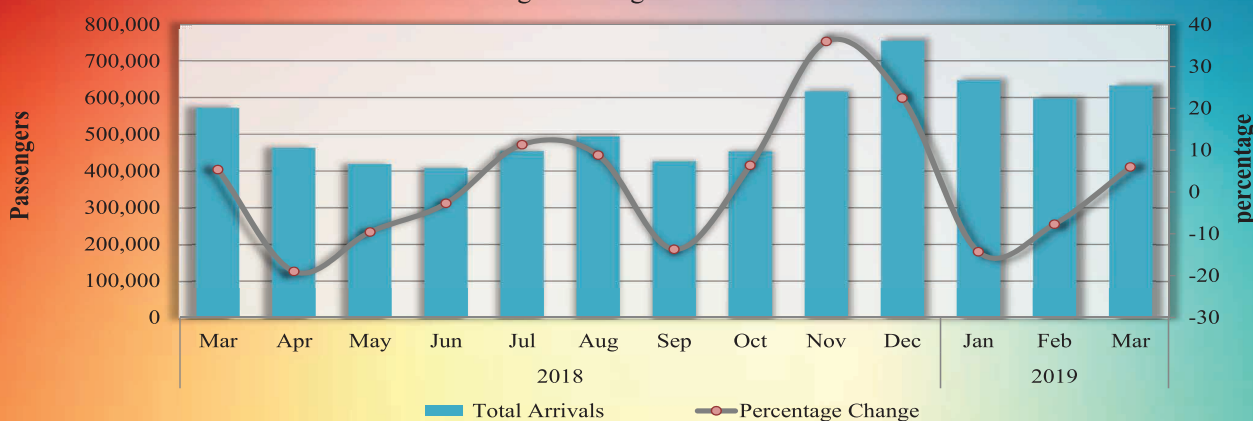


*- Deposits with maturity 9 months to 1 year
 - Loans-Business-Secured with maturity 1 to 5 years

Foreign Tourist Arrivals

In March 2019, total number of passenger arrivals was 633,164 increased by 6% after the decreasing of 7.7% in the preceding month. The main purpose of the passenger arrivals in Cambodia was for vacation, accounted for more than 73% of the total.

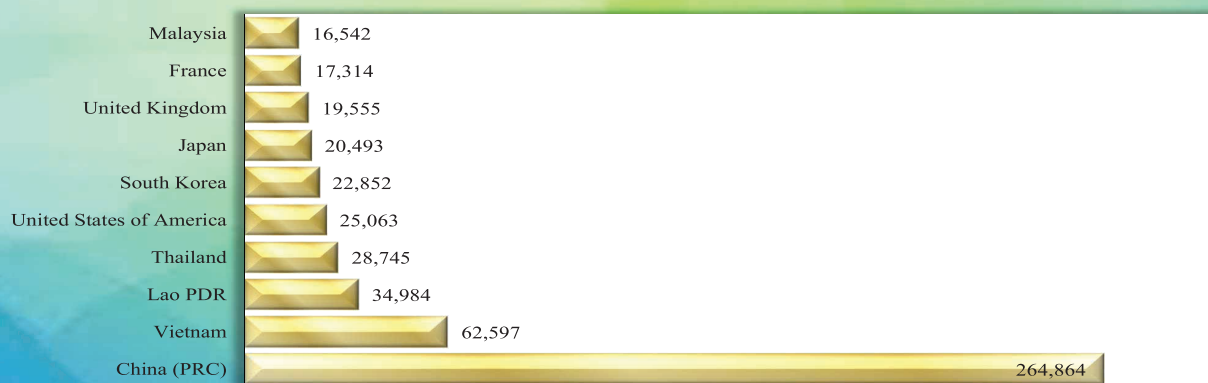
Chart 9: Foreign Passenger Arrivals in Cambodia



Source: Ministry of Tourism and Migration Department of Ministry of Interior

Most of the foreign passengers were from China P.R.C., Vietnam, Lao PDR, Thailand, United States of America, South Korea, Japan, United Kingdom, France, and Malaysia.

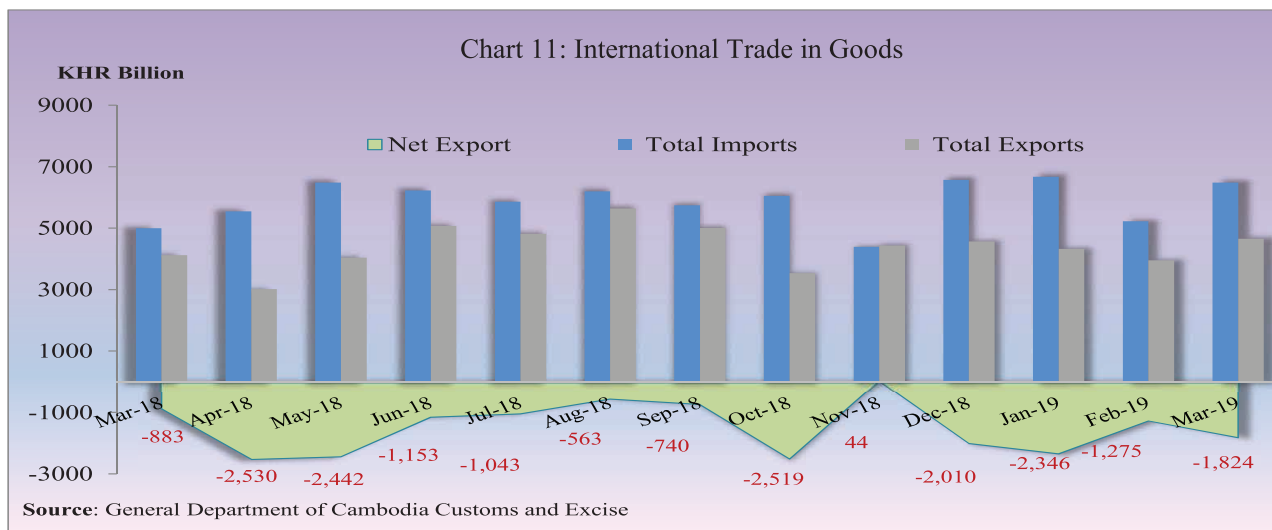
Chart 10: Top-ten Countries of Passenger Arrivals in March 2019



Source: Ministry of Tourism

International Trade in Goods

International trade in goods showed a deficit of KHR 1,824.4 billion (28.1%) in March 2019, followed the deficit of KHR 1,274.7 billion (24.4%) in February.



The major components of total exports were Garment, Footwear, Rice, Bicycle, Electrical Part, Rubber, Wood Products, Fish and Other Agricultural Products, and Vehicle part. And the major components of total imports were Fabric, Vehicles, Oil, Food and Beverage, Equipment Construction, Garman, Steel, Medicine, Cigarettes, Other Electronic Equipment, and Gold.

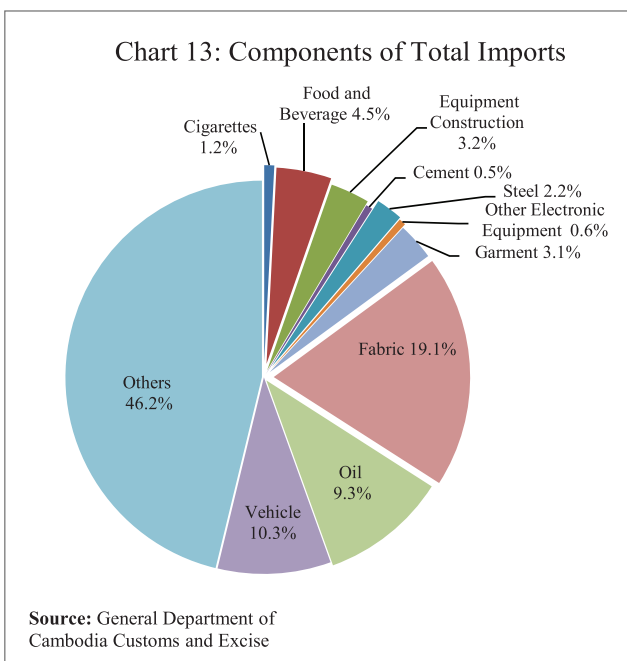
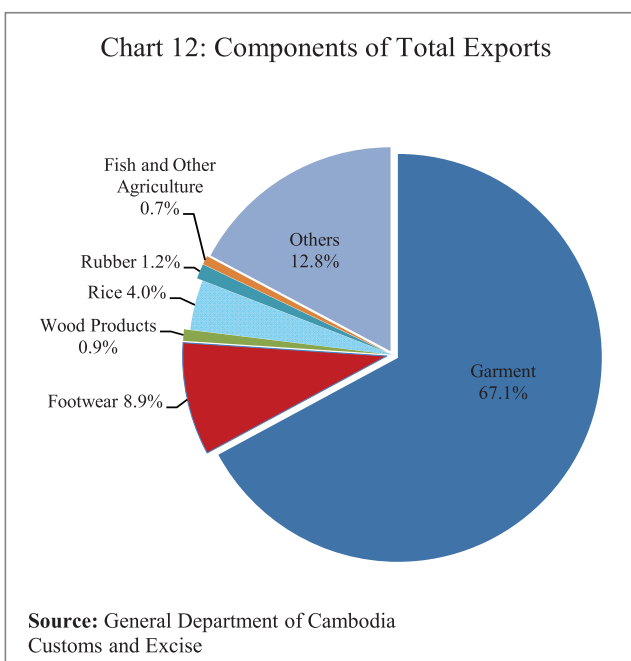


Table 1: Consumer Price Index and Inflation Rate

1. Consumer Price Index (CPI) and Component Indices	Dec-17	Dec-18	Jan-19	Feb-19	Mar-19
(Oct-Dec. 2006 = 100)					
CPI (all items)	171.78	174.59	174.54	175.99	176.45
Food and Non-Alcoholic Beverages	208.72	212.69	212.83	214.24	213.99
Alcoholic Beverages, Tobacco and Narcotics	158.96	167.84	169.82	170.41	170.64
Clothing and Footwear	145.44	149.50	149.52	150.79	151.15
Housing, Water, Electricity, Gas and other Fuels	125.79	126.31	126.15	127.21	127.91
Furnishings and Household Maintenance	150.23	150.80	152.60	153.06	152.82
Health	134.07	136.75	136.99	137.33	137.04
Transport	115.56	112.78	109.66	111.45	113.67
Communication	67.73	67.32	67.49	67.55	67.39
Recreation and Culture	117.70	118.69	119.08	118.99	118.58
Education	158.90	159.50	159.50	159.50	159.50
Restaurants	261.95	275.66	278.95	284.15	287.51
<i>Miscellaneous Goods and Services</i>	143.62	144.54	144.62	146.18	146.09
2. Percentage Change in the CPI and its Components					
2.1 Month on Month Change (%)					
CPI (all items)	0.40	-0.47	-0.02	0.83	0.26
Food and Non-Alcoholic Beverages	0.24	-0.13	0.07	0.66	-0.11
Alcoholic Beverages, Tobacco and Narcotics	-0.34	0.46	1.18	0.35	0.13
Clothing and Footwear	-0.09	-0.13	0.01	0.85	0.24
Housing, Water, Electricity, Gas and other Fuels	0.73	-0.58	-0.13	0.84	0.55
Furnishings and Household Maintenance	0.20	-0.09	1.19	0.31	-0.16
Health	-0.03	0.17	0.18	0.25	-0.22
Transport	1.35	-3.57	-2.77	1.63	2.00
Communication	-0.28	-0.32	0.25	0.09	-0.23
Recreation and Culture	0.09	-0.37	0.33	-0.07	-0.35
Education	0.00	0.00	0.00	0.00	0.00
Restaurants	0.71	-0.34	1.19	1.86	1.18
Miscellaneous Goods and Services	0.56	-0.45	0.05	1.08	-0.06
2.2 Year on Year Change (%)					
CPI (all items)	2.23	1.63	1.54	2.01	2.24
Food and Non-Alcoholic Beverages	1.88	1.90	2.07	2.17	1.94
Alcoholic Beverages, Tobacco and Narcotics	0.33	5.59	6.44	6.42	6.71
Clothing and Footwear	1.48	2.79	2.51	3.56	3.64
Housing, Water, Electricity, Gas and other Fuels	0.64	0.41	0.32	1.16	1.88
Furnishings and Household Maintenance	0.16	0.38	1.43	1.60	1.66
Health	1.14	2.00	2.30	2.27	1.87
Transport	4.43	-2.41	-5.67	-3.92	-1.75
Communication	-0.73	-0.60	-0.24	-0.45	-0.38
Recreation and Culture	-0.78	0.84	1.38	0.86	0.76
Education	-0.74	0.38	0.38	0.38	0.38
Restaurants	7.60	5.23	5.78	7.22	8.24
Miscellaneous Goods and Services	2.85	0.64	0.42	1.30	1.42
3. Three-month moving average CPI (All Items)	171.22	175.34	174.85	175.04	175.66
Year on Year Change (%)	2.20	2.41	1.90	1.73	1.93
4. Twelve-month moving average CPI (All Items)	169.87	174.05	174.27	174.56	174.88
Year on Year Change (%)	2.91	2.46	2.42	2.40	2.39

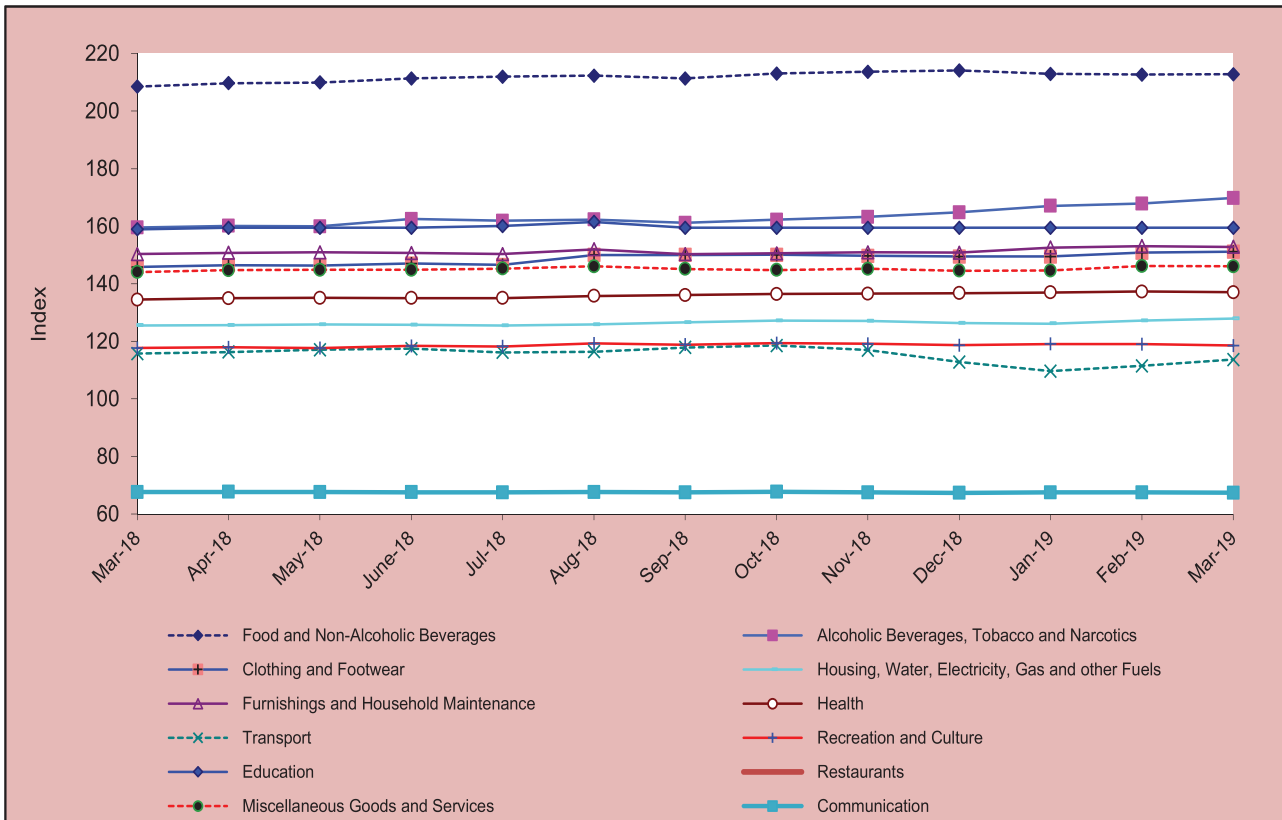
Source: National Institute of Statistics

Table 2: Consumer Items Showing Price Increased in March 2019

No.	Description	Weight	Index			Percentage Change	
			Mar-18	Feb-19	Mar-19	Monthly	Yearly
1	GASOLINE	4.969	95.87	83.12	88.55	6.5	-7.6
2	GAS	2.699	114.43	120.58	125.13	3.8	9.4
3	CLEANING, REPAIR AND HIRE OF CLOTHING	0.040	134.06	138.63	140.59	1.4	4.9
4	RESTAURANTS AND HOTELS	5.861	265.62	284.15	287.51	1.2	8.2
5	BREAD	0.173	223.24	228.27	230.23	0.9	3.1
6	TRADITIONAL CAKES	0.561	219.87	223.70	225.42	0.8	2.5
7	MAINTENANCE AND REPAIRS OF PERSONAL TRANSPORT EQUIPMENT	0.265	257.18	257.18	259.17	0.8	0.8
8	CLOTHING FOR WOMEN AND GIRLS	1.065	142.39	148.17	149.18	0.7	4.8
9	WINE	0.248	172.87	181.92	183.05	0.6	5.9
10	TRANSPORT SERVICES	0.812	170.00	169.20	170.17	0.6	0.1
11	CHICKEN (FRESH)	1.303	208.89	216.71	217.73	0.5	4.2
12	BICYCLES	0.103	139.84	144.15	144.80	0.5	3.5
13	FRESH EGGS	1.013	162.87	163.89	164.54	0.4	1.0
14	FRESH FRUITS	4.094	213.77	216.48	217.26	0.4	1.6
15	PREPARED AND PRESERVED VEGETABLES	0.337	173.73	179.61	180.35	0.4	3.8
16	MOTOR OIL	0.062	147.37	150.77	151.39	0.4	2.7
17	PROCESSED EGGS	0.079	167.55	174.82	175.35	0.3	4.7
18	COFFEE, TEA AND COCOA	0.755	138.09	141.53	142.01	0.3	2.8
19	OTHER CLOTHING (BOTH SEXES)	0.222	125.54	125.23	125.56	0.3	0.0
20	INFANTS' CLOTHING (BELOW 1 YEAR)	0.054	145.34	145.63	146.00	0.3	0.5
21	DIESEL	0.144	110.73	107.90	108.23	0.3	-2.3
22	OTHER GRAINS	0.090	290.79	299.59	300.19	0.2	3.2
23	FOOD PRODUCTS NEC	1.404	221.52	227.62	228.01	0.2	2.9
24	HOUSEHOLD APPLIANCES	0.397	116.91	117.63	117.82	0.2	0.8
25	OTHER APPLIANCES, ARTICLES AND PRODUCTS FOR PERSONAL CARE	0.399	147.90	149.11	149.45	0.2	1.0
26	RICE, QUALITY NO.2 WHITE, NEANG-MENH, BATTAMBANG	2.681	217.68	228.02	228.34	0.1	4.9
27	GLUTINOUS RICE, QUALITY NO.1, WHITE, KHMER	0.429	136.45	139.83	139.93	0.1	2.6
28	LOCALLY PROCESSED MEAT	0.276	244.74	254.48	254.69	0.1	4.1
29	PROCESSED FISH AND SEAFOOD	1.646	234.00	246.37	246.64	0.1	5.4
30	BEER	0.532	123.22	126.86	127.02	0.1	3.1
31	GLASSWARE, TABLEWARE AND HOUSEHOLD UTENSILS	0.078	136.63	140.67	140.77	0.1	3.0
32	PERSONAL EFFECTS N.E.C	0.876	169.90	172.51	172.70	0.1	1.6
33	BEEF (FRESH)	2.165	244.28	248.32	248.36	0.0	1.7
34	DUCK (FRESH)	0.319	187.87	193.66	193.64	0.0	3.1
35	FISH (FRESH)	7.435	213.02	215.90	215.82	0.0	1.3
36	PULSES/LEGUMES	0.413	221.91	231.19	231.31	0.0	4.2
37	SUGAR, JAM, HONEY, CHOCOLATE AND CONFECTIONERY	1.489	146.15	143.43	143.46	0.0	-1.8
38	MINERAL WATERS, SOFT DRINKS, FRUIT AND VEGETABLE JUICES	0.748	146.98	143.97	143.97	0.0	-2.1
39	TOBACCO	0.831	179.54	194.89	194.93	0.0	8.6
40	CLOTHING MATERIALS	0.334	160.64	163.34	163.26	0.0	1.6

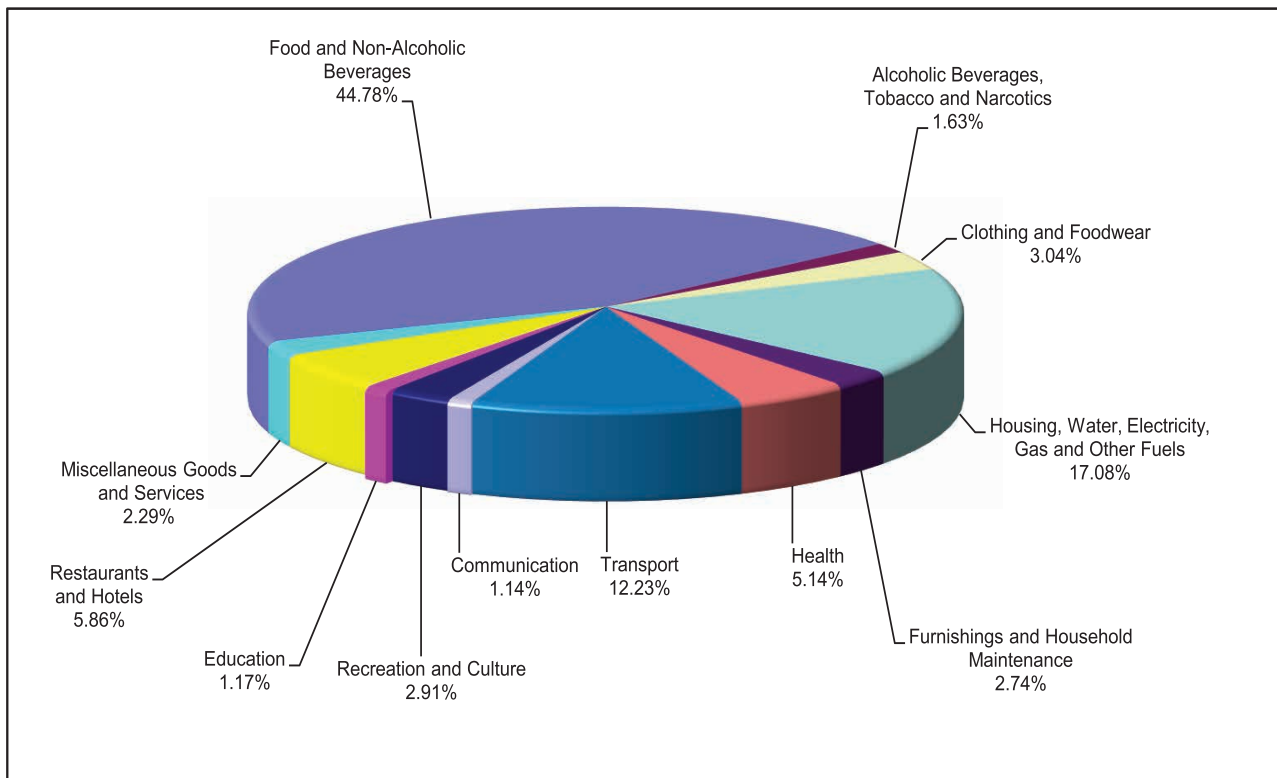
Source: National Institute of Statistics

Chart 1: Consumer Price Index



Source: National Institute of Statistics

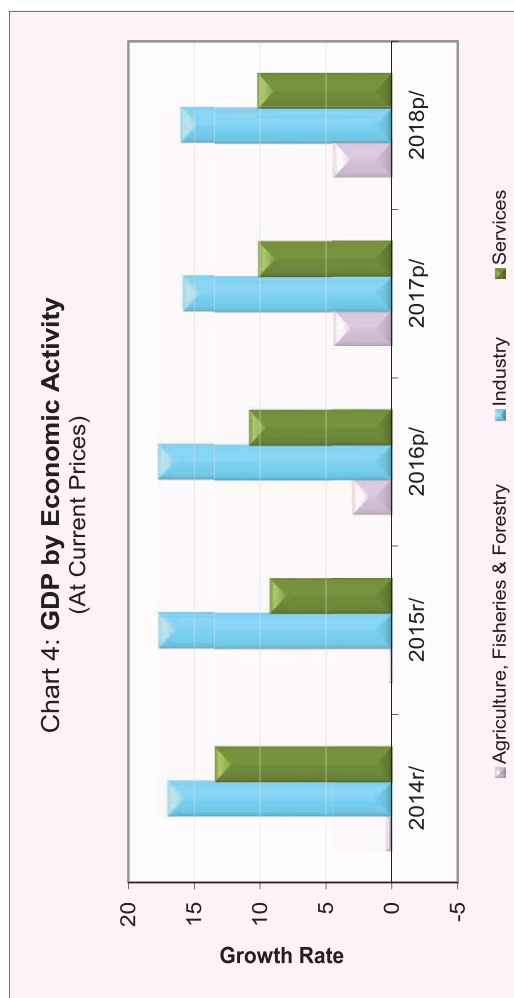
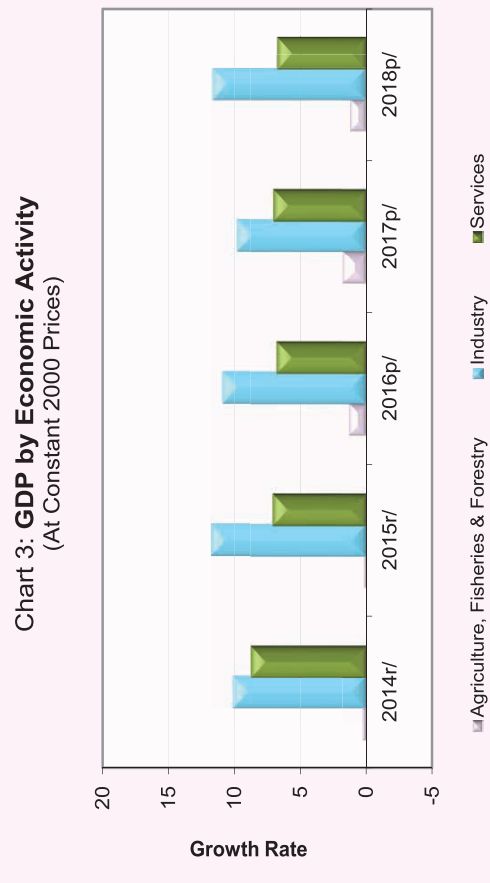
Chart 2: Weight of All Group Indices in Consumer Basket



Source: National Institute of Statistics

Table 3: Gross Domestic Product (GDP)

	At Constant 2000 Prices					At Current Prices				
	2014r/	2015r/	2016p/	2017p/	2018p/	2014r/	2015r/	2016p/	2017p/	2018p/
GDP in KHR Billion	40,182	43,009	46,033	49,262	52,956	67,437	73,423	81,242	89,831	99,544
GDP in USD Million	9,971	10,686	11,423	12,164	13,056	16,734	18,242	20,159	22,180	24,542
GDP % Growth Rate	7.1	7.0	7.0	7.0	7.5	10.0	8.9	10.6	10.6	10.8
GDP % Growth Rate, by Economic Activity										
Agriculture, Fisheries & Forestry	0.3	0.2	1.3	1.7	1.2	0.5	0.2	3.0	4.4	4.4
Industry	10.1	11.7	10.9	9.8	11.6	17.0	17.7	17.7	15.8	16.0
Services	8.7	7.1	6.8	7.0	6.7	13.4	9.2	10.8	10.1	10.2
GDP Per Capita in KHR Million	2.7	2.9	3.0	3.2	3.4	4.6	4.9	5.4	5.8	6.3
GDP Per Capita in USD	674	714	754	783	829	1,131	1,218	1,330	1,429	1,559



p/: preliminary estimates

r/: revised

Source: National Institute of Statistics

Table 4: Investment Projects Approved by Sectors

(In USD Million)

Sector	Agriculture		Industries		Services		Tourism		Total	
	Projects	Fixed Assets	Projects	Fixed Assets	Projects	Fixed Assets	Projects	Fixed Assets	Projects	Fixed Assets
2016										
Q3	1	35.3	9	67.4	-	-	-	-	10	102.7
Q4	5	246.6	17	113.5	2	91	4	56.3	28	507.4
Total	9	331.3	74	900.8	4	442.0	11	718.4	98	2,392.5
2017										
Q1	1	8.0	18	115.6	1	4.2	1	3.6	21	131.4
Q2	3	61.0	21	209.9	3	1,045.3	-	644.2	27	1,960.3
Q3	3	205.6	33	281.1	-	-	2	2,518.8	38	3,005.4
Q4	-	-	25	119.8	-	-	-	-	25	119.8
Total	7	274.5	97	726.3	4	1,049.5	3	3,166.6	111	5,216.9
2018										
Q1	6	210.2	26	154.3	2	29.5	2	75.2	36	469.2
Q2	3	122.5	21	128.2	3	2,049.6	2	125.9	29	2,426.2
Q3	1	32.0	25	408.2	2	550.4	2	137.3	30	1,127.9
Q4	3	79.5	43	7.0	3	240.4	6	1,239.4	55	1,566.3
Total	13	444.2	115	697.7	10	2,869.9	12	1,577.8	150	5,589.6
2019										
Q1	-	-	58	310.1	1	6.8	4	1,618.8	63	1,935.6
Total	-	-	58	310.1	1	6.8	4	1,618.8	63	1,935.6

Chart 5: Investment Fixed Assets by Sectors

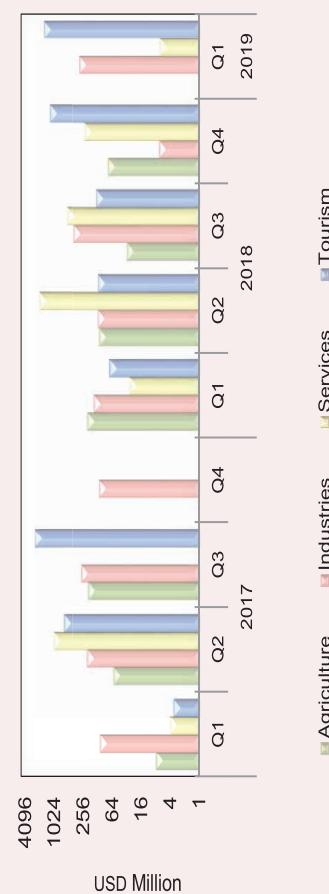
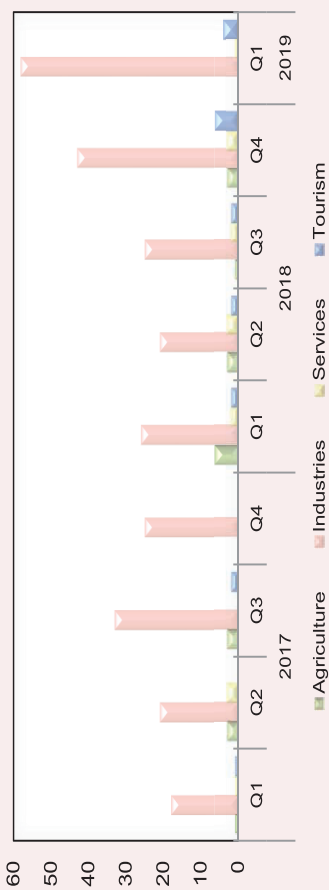


Chart 6: Number of Investment Projects by Sectors



Source: Council for the Development of Cambodia (Cambodian Investment Board)

Table 5: Investment Projects Approved by Major Countries*

(In USD Million)

Country	2017				2018				2019
	Q1	Q2	Q3	Q4	Q1	Q2	Q3	Q4	Q1
Cambodia	23.9	595.7	2,550.4	5.9	133.9	336.5	838.1	729.5	1,050.4
China	28.1	1,051.0	293.8	64.4	224.2	2,042.3	205.8	227.8	279.9
Korea	15.5	7.2	123.6	3.2	3.5	5.4	3.6	2.1	19.1
United States	-	-	-	-	6.8	-	-	-	-
Thailand	-	15.9	-	-	19.1	-	13.1	6.8	6.8
Vietnam	-	-	-	-	-	-	-	21.4	-
Malaysia	-	8.9	3.8	1.2	-	2.2	-	-	4.5
Singapore	-	248.3	3.8	-	1.4	-	-	6.5	10.3
Taiwan	10.5	3.8	6.0	3.0	11.7	-	8.7	12.9	24.6
Australia	-	-	-	-	2.4	-	-	-	-
England	35.4	4.9	-	8.7	-	-	-	10.3	502.7
Japan	-	-	-	-	-	-	-	822.6	-
Hong Kong	13.4	20.8	20.2	31.0	13.8	28.8	33.1	5.9	24.6
Others	4.6	3.9	3.7	2.4	52.4	11.1	25.3	6.7	12.7
Total	131.4	1,960.3	3,005.4	119.8	469.2	2,426.2	1,127.9	1,852.5	1,935.6
(Share of Total)									
Cambodia	18.2	30.4	84.9	5.0	28.5	13.9	74.3	39.4	54.3
China	21.4	53.6	9.8	53.7	47.8	84.2	18.2	12.3	14.5
Korea	11.8	0.4	4.1	2.7	0.7	0.2	0.3	0.1	1.0
United States	-	-	-	-	1.5	-	-	-	-
Thailand	-	0.8	-	-	4.1	-	1.2	0.4	0.4
Vietnam	-	-	-	-	-	-	-	1.2	-
Malaysia	-	0.5	0.1	1.0	-	0.1	-	-	0.2
Singapore	-	12.7	0.1	-	0.3	-	-	0.3	0.5
Taiwan	8.0	0.2	0.2	2.5	2.5	-	0.8	0.7	1.3
Australia	-	-	-	-	0.5	-	-	-	-
England	26.9	0.2	-	7.3	-	-	-	0.6	26.0
Canada	-	-	-	-	-	-	-	44.4	-
Hong Kong	10.2	1.1	0.7	25.8	2.9	1.2	2.9	0.3	1.3
Others	3.5	0.2	0.1	2.0	11.2	0.5	2.2	0.4	0.7
Total	100.0	100.0	100.0	100.0	100.0	100.0	100.0	100.0	100.0

* Fixed Assets

Source: Council for the Development of Cambodia (Cambodian Investment Board)

Table 6: Daily Exchange Rate in March 2019

(KHR/USD)

Day	Parallel Market Rate			Official Rate	Daily Change*	
	Purchase	Sale	Midpoint		Spread	% Change
1	4,007	4,016	4,012	4,001	0.0	-0.2
2	4,007	4,016	4,012	4,001	0.0	0.0
3	4,007	4,016	4,012	4,001	0.0	0.0
4	4,005	4,012	4,009	4,000	-2.0	0.0
5	4,008	4,015	4,012	4,000	3.0	0.1
6	4,008	4,015	4,012	3,999	0.0	0.0
7	4,008	4,015	4,012	3,997	0.0	0.0
8	4,008	4,015	4,012	3,997	0.0	0.0
9	4,008	4,015	4,012	3,997	0.0	0.0
10	4,008	4,015	4,012	3,997	0.0	0.0
11	4,005	4,013	4,009	3,995	-3.0	-0.1
12	4,005	4,013	4,009	3,995	0.0	0.0
13	3,998	4,011	4,005	3,990	-7.0	-0.2
14	3,998	4,011	4,005	3,990	0.0	0.0
15	3,998	4,011	4,005	3,990	0.0	0.0
16	4,003	4,014	4,009	3,990	5.0	0.1
17	4,003	4,014	4,009	3,990	0.0	0.0
18	4,003	4,014	4,009	3,989	0.0	0.0
19	4,006	4,015	4,011	3,990	3.0	0.1
20	4,006	4,015	4,011	3,991	0.0	0.0
21	4,006	4,015	4,011	3,993	0.0	0.0
22	4,006	4,015	4,011	3,997	0.0	0.0
23	4,014	4,023	4,019	3,997	8.0	0.2
24	4,014	4,023	4,019	3,997	0.0	0.0
25	4,014	4,023	4,019	4,000	0.0	0.0
26	4,019	4,029	4,024	4,007	5.0	0.1
27	4,024	4,033	4,029	4,012	5.0	0.1
28	4,024	4,033	4,029	4,015	0.0	0.0
29	4,019	4,030	4,025	4,015	-5.0	-0.1
30	4,019	4,030	4,025	4,015	0.0	0.0
31	4,019	4,030	4,025	4,015	0.0	0.0
Average Rate	4,009	4,018	4,014	3,999	0.4	0.0

* Spread of Daily Purchasing Market Rate

Table 7: Monthly Exchange Rate
(KHR/USD, End-Period)

Month	Market Rate				Official Rate
	Purchase	Monthly %Change	Sale	Midpoint	
Dec-10	4,048	-0.64	4,053	4,051	4,053
Dec-11	4,057	0.67	4,066	4,062	4,039
Dec-12	3,990	-0.13	3,995	3,993	3,995
Dec-13	4,003	0.23	4,013	4,008	3,995
Dec-14	4,064	0.22	4,073	4,069	4,075
Dec-15	4,048	0.10	4,055	4,052	4,050
Dec-16	4,039	0.17	4,050	4,045	4,037
Dec-17	4,037	0.07	4,046	4,042	4,037
2018					
Jan	4,016	-0.52	4,022	4,019	4,015
Feb	4,009	-0.17	4,018	4,014	4,010
Mar	4,002	-0.17	4,011	4,007	4,000
Apr	4,038	0.90	4,051	4,045	4,032
May	4,077	0.97	4,089	4,083	4,075
Jun	4,066	-0.27	4,075	4,071	4,063
Jul	4,064	-0.05	4,074	4,069	4,059
Aug	4,079	0.37	4,089	4,084	4,084
Sep	4,082	0.07	4,092	4,087	4,082
Oct	4,058	-0.59	4,067	4,063	4,060
Nov	4,038	-0.49	4,050	4,044	4,031
Dec	4,027	-0.27	4,039	4,033	4,018
2019					
Jan	4,016	-0.27	4,025	4,021	4,011
Feb	4,007	-0.22	4,016	4,012	4,003
Mar	4,019	0.30	4,030	4,025	4,015

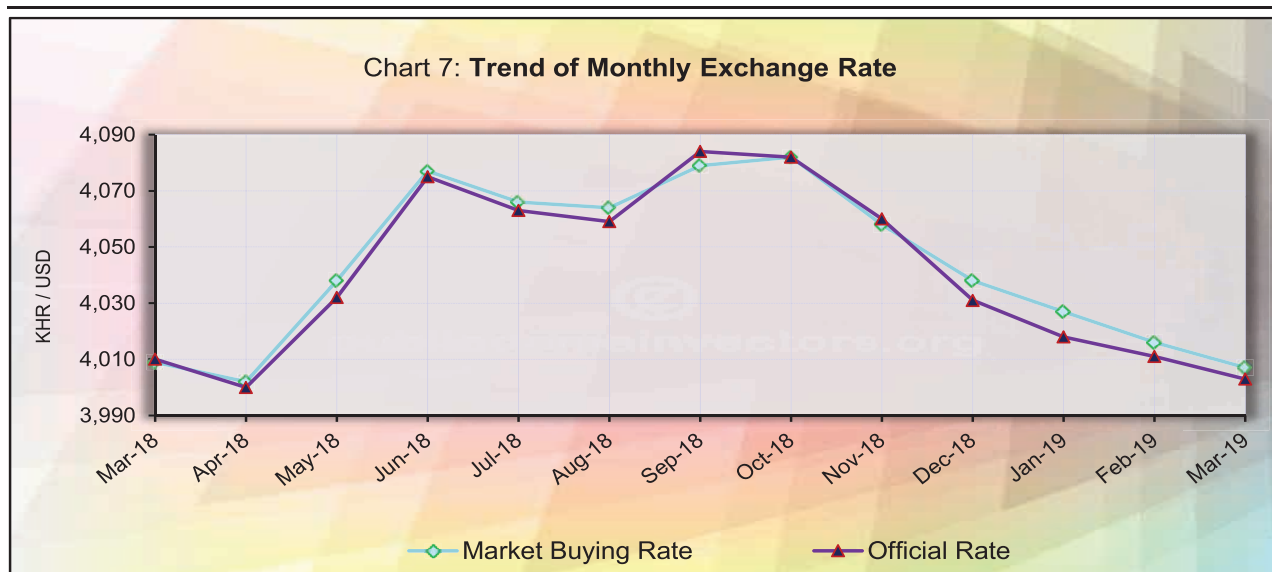


Table 8: The Value of KHR Against Other Currencies
(Official Buying Rate, End-Period)

Unit	SDR	US Dollar	Euro	Japanese Yen	Pound Sterling	Indonesian Rupiah	Malaysian Ringgit	Philippines Peso	Singaporean Dollar	Thai Baht	Vietnamese Dong
	1	1	1	100	1	1000	1	100	1	1	1000
Dec-10	6,242	4,051	5,387	4,970	6,252	450	1,318	9,248	3,143	134	208
Dec-11	6,181	4,039	5,230	5,201	6,225	445	1,274	9,210	3,108	127	192
Dec-12	6,140	3,995	5,285	4,645	6,456	411	1,304	9,737	3,266	131	191
Dec-13	6,152	3,995	5,515	3,807	6,589	327	1,215	8,999	3,153	122	190
Dec-14	5,902	4,075	4,955	3,411	6,342	328	1,166	9,117	3,083	124	191
Dec-15	5,617	4,050	4,429	3,362	6,000	294	944	8,630	2,863	112	181
Dec-16	5,410	4,037	4,265	3,467	4,960	300	901	8,119	2,792	112	178
Dec-17	5,735	4,037	4,821	3,574	5,426	298	994	8,094	3,017	124	178
2018											
Jan	5,833	4,015	4,971	3,686	5,651	300	1,033	7,841	3,064	128	177
Feb	5,820	4,010	4,903	3,730	5,574	293	1,022	7,712	3,027	128	176
Mar	5,815	4,000	4,919	3,757	5,609	291	1,035	7,654	3,050	128	175
Apr	5,797	4,032	4,887	3,694	5,552	290	1,029	7,771	3,045	128	177
May	5,763	4,075	4,751	3,753	5,312	291	1,022	7,744	3,043	127	179
Jun	5,708	4,063	4,701	3,679	5,314	282	1,005	7,593	2,972	123	177
Jul	5,696	4,059	4,753	3,660	5,332	282	1,000	7,632	2,984	122	175
Aug	5,727	4,084	4,763	3,681	5,312	278	994	7,634	2,985	125	175
Sep	5,723	4,082	4,751	3,600	5,338	274	985	7,542	2,984	126	175
Oct	5,612	4,060	4,606	3,589	5,160	267	971	7,583	2,931	122	174
Nov	5,576	4,031	4,592	3,555	5,153	280	963	7,693	2,943	122	173
Dec	5,588	4,018	4,597	3,641	5,098	277	969	7,653	2,942	124	174
2019											
Jan	5,604	4,011	4,610	3,683	5,264	284	981	7,668	2,979	128	173
Feb	5,595	4,003	4,555	3,610	5,331	285	984	7,714	2,970	127	173
Mar	5,573	4,015	4,510	3,631	5,244	282	985	7,611	2,961	126	173
Monthly % Change	-0.39	0.30	-0.99	0.58	-1.63	-1.05	0.10	-1.34	-0.30	-0.79	0.00

Table 9: Deposit Money Bank's Interest Rates on Deposits and Loans in KHR

(Weighted Average Rate on New Amount)

	Dec-17	Mar-18	Apr-18	May-18	Jun-18	Jul-18	Aug-18	Sep-18	Oct-18	Nov-18	Dec-18	Jan-19	Feb-19	Mar-19
Deposit:														
Demand Deposits	0.04	0.01	0.02	0.46	0.12	0.06	0.09	0.06	0.01	0.02	0.01	0.01	0.07	0.02
Saving Deposits	1.19	1.03	1.01	1.02	1.00	1.07	1.10	1.10	1.00	0.59	0.59	0.57	0.58	0.66
Term Deposits:														
One month or less	3.23	2.85	1.49	2.42	2.84	2.85	2.59	2.61	2.66	2.29	2.64	3.04	3.09	2.24
Greater than one month to three months	3.29	3.67	2.81	4.50	4.25	4.62	4.65	4.31	3.88	3.47	3.91	3.38	3.92	2.87
Greater than three months to six months	5.13	5.06	3.49	4.94	4.60	5.17	5.05	5.15	5.03	4.68	4.81	5.16	4.85	6.29
Greater than six months to 9 months	4.77	6.12	4.70	4.66	4.66	5.76	4.44	6.21	5.57	4.97	4.86	4.41	4.95	5.04
Greater than 9 months to 1 Year	6.36	6.78	6.73	6.35	6.19	6.26	6.30	6.33	6.51	6.06	6.21	6.09	6.30	6.62
Greater than 1 Year to 3 Years	7.34	7.62	4.71	7.75	7.92	7.77	7.19	7.71	7.14	6.88	7.27	7.26	7.38	9.56
Greater than 3 Year to 5 Years	6.75	6.72	6.69	6.67	7.25	7.09	7.25	7.17	7.04	7.25	7.14	7.23	7.22	7.24
Over 5 Years	0.00	0.00	0.00	0.00	0.00	5.75	0.00	7.25	7.25	7.25	0.00	5.75	5.75	7.25
Other Deposits	0.00	0.00	0.00	0.00	0.00	4.30	0.00	0.00	0.00	0.11	0.00	0.02	0.00	0.00
Loans:														
Overdraft - Consumer	18.00	7.71	7.50	0.00	18.00	8.35	8.25	8.25	0.00	7.33	0.00	7.86	9.25	14.58
Overdraft - Business	7.52	8.46	8.58	9.11	8.72	8.57	8.48	8.31	8.53	8.58	8.31	7.88	0.04	8.09
Credit Card	17.91	17.89	17.94	17.86	17.57	17.72	17.76	17.78	15.39	17.34	16.98	16.75	18.00	16.60
Bank Placements:														
One month or less	0.00	0.00	0.00	0.00	0.00	0.00	0.00	0.00	0.00	0.00	0.00	2.42	0.00	0.00
Greater than one month	3.75	5.25	2.20	1.68	5.34	5.45	4.01	4.37	1.91	0.00	7.54	1.63	3.16	7.25
Term Loans - Consumer:														
Unsecured:														
Up to 1 Year	18.00	18.00	17.87	18.00	18.00	18.00	18.00	18.00	17.76	16.55	16.02	16.15	16.00	16.00
Greater than 1 Year to 5 Years	17.83	17.98	15.13	18.00	17.91	18.00	18.00	18.00	17.19	16.36	8.85	10.48	16.00	15.71
Over 5 Years	0.00	0.00	9.12	0.00	0.00	0.00	0.00	0.00	0.00	18.00	11.05	9.91	0.00	12.30
Secured:														
Up to 1 Year	15.76	17.70	16.11	17.73	17.51	17.34	9.16	8.99	16.38	14.75	9.50	12.95	13.38	16.84
Greater than 1 Year to 5 Years	17.18	16.79	16.39	16.44	16.72	16.35	16.78	14.78	16.26	15.92	14.99	15.26	14.97	14.44
Over 5 Years	10.81	12.50	11.32	10.63	10.87	8.68	8.13	8.55	10.63	6.71	10.01	10.01	10.30	11.55
Term Loans - Business:														
Unsecured:														
Up to 1 Year	18.00	18.00	8.15	18.00	18.00	17.97	17.88	17.88	17.90	18.00	18.00	17.98	18.00	17.89
Greater than 1 Year to 5 Years	17.92	10.00	9.20	17.99	7.79	7.32	8.98	8.05	17.90	8.57	15.70	9.84	9.31	10.42
Over 5 Years	0.00	0.00	0.00	0.00	0.00	0.00	0.00	0.00	0.00	0.00	18.00	0.00	0.00	0.00
Secured:														
Up to 1 Year	11.53	11.96	10.54	13.11	15.02	15.41	10.94	10.62	11.43	10.12	10.98	11.77	10.34	10.88
Greater than 1 Year to 5 Years	17.05	16.47	15.19	16.50	16.33	14.88	14.79	14.79	13.18	13.14	13.74	14.27	15.55	14.45
Over 5 Years	10.90	12.08	12.16	12.29	12.62	11.89	11.72	11.68	11.37	11.47	11.42	11.53	10.81	11.34
Other Loans														
Up to 1 Year	10.71	12.09	11.00	11.47	0.00	10.20	9.60	0.00	12.00	11.29	9.00	11.53	0.00	9.69
Greater than 1 Year to 5 Years	0.00	0.00	7.50	0.00	0.00	0.00	9.50	0.00	0.00	0.00	0.00	0.00	0.00	9.42
Over 5 Years	0.00	8.00	7.73	7.50	7.69	7.50	7.71	7.76	7.58	7.88	7.69	7.72	8.00	9.85

Including Commercial Banks and Specialized Banks

Table 10: Deposit Money Bank's Interest Rates on Deposits and Loans in US Dollar
(Weighted Average Rate on New Amount)

	Dec-17	Mar-18	Apr-18	May-18	Jun-18	Jul-18	Aug-18	Sep-18	Oct-18	Nov-18	Dec-18	Jan-19	Feb-19	Mar-19
Deposit:														
Demand Deposits	0.22	0.39	0.65	0.39	0.56	1.46	0.33	0.38	0.35	0.23	0.27	0.32	0.22	0.15
Saving Deposits	0.54	0.74	0.66	0.59	0.66	0.59	0.56	0.56	0.53	0.35	0.36	0.36	0.62	0.37
Term Deposits:														
One month or less	1.81	1.63	1.50	1.94	1.75	1.66	1.59	1.43	1.52	1.40	1.40	1.89	1.52	2.04
Greater than one month to three months	2.18	2.29	2.31	2.35	2.29	2.37	2.44	2.34	2.37	2.41	2.56	2.15	2.48	2.73
Greater than three months to six months	3.19	3.20	3.12	3.70	3.38	3.37	3.43	3.18	3.38	3.71	3.34	2.84	3.27	3.55
Greater than 6 months to 9 months	4.07	4.09	3.89	3.90	4.60	3.86	4.05	4.13	3.86	3.97	4.05	4.43	3.75	4.83
Greater than 9 months to 1 Year	4.87	4.95	4.66	4.64	5.08	4.79	4.99	4.86	4.88	4.86	4.85	4.39	4.52	4.66
Greater than 1 Year to 3 Years	5.63	5.38	5.78	5.74	6.03	5.78	5.77	5.53	5.41	5.10	5.52	5.60	5.60	6.32
Greater than 3 Year to 5 Years	6.04	6.76	6.64	6.48	6.70	6.61	6.52	5.03	6.15	2.91	6.68	6.66	6.66	6.27
Over 5 Years	6.37	7.57	7.20	7.18	6.49	7.21	7.22	6.51	6.50	6.49	6.50	6.53	6.45	7.19
Other Deposits	1.65	1.93	2.17	2.07	4.48	2.45	2.24	2.61	0.98	1.39	1.74	2.55	1.88	2.13
Loans:														
Overdraft - Consumer	7.66	8.23	8.18	7.71	7.34	8.39	7.52	8.15	8.26	8.21	6.92	7.87	7.77	8.21
Overdraft - Business	7.51	7.63	7.69	7.70	7.66	7.62	7.54	7.52	7.55	7.27	7.58	7.67	0.50	7.56
Credit Card	19.06	17.16	15.48	15.06	14.28	14.42	12.47	13.65	16.33	18.94	28.89	29.31	28.41	16.32
Bank Placements:														
One month or less	1.32	1.30	1.43	1.53	1.56	1.75	1.41	1.91	1.85	1.70	1.69	2.05	1.39	1.56
Greater than one month	1.78	1.73	2.39	2.33	2.26	2.40	2.32	2.18	2.34	2.44	2.09	2.27	2.18	2.79
Term Loans - Consumer:														
Unsecured:														
Up to 1 Year	11.63	20.61	21.59	21.00	21.75	19.62	20.44	15.17	22.58	20.42	19.93	18.68	6.76	22.26
Greater than 1 Year to 5 Years	8.58	11.58	9.59	13.42	12.21	7.09	13.57	12.97	14.23	13.18	12.98	12.30	11.41	26.72
Over 5 Years	10.02	10.52	8.48	7.90	0.00	7.80	10.93	8.85	8.54	8.19	11.00	11.01	7.63	11.05
Secured:														
Up to 1 Year	7.80	7.96	8.25	8.52	7.37	10.25	7.19	7.24	7.88	7.08	7.07	8.48	7.25	7.50
Greater than 1 Year to 5 Years	12.38	12.09	11.76	11.80	11.47	10.12	11.29	11.06	11.55	11.34	10.75	10.68	10.64	11.03
Over 5 Years	9.73	10.51	9.65	9.53	8.89	9.10	9.38	9.32	9.12	9.19	9.35	9.57	9.25	9.44
Term Loans - Business:														
Unsecured:														
Up to 1 Year	9.34	13.11	14.54	12.78	13.69	12.55	14.32	13.38	13.92	14.64	7.03	9.51	10.73	20.29
Greater than 1 Year to 5 Years	9.32	11.79	6.41	9.20	9.06	18.00	17.00	16.53	22.79	7.79	6.25	25.99	40.89	31.11
Over 5 Years	0.00	7.46	9.37	8.18	8.00	0.00	9.00	0.00	0.00	0.00	0.00	0.00	0.00	10.50
Secured:														
Up to 1 Year	10.03	8.14	8.20	7.41	7.41	7.42	7.62	8.11	8.23	7.83	8.55	8.10	7.49	7.88
Greater than 1 Year to 5 Years	10.74	11.15	9.94	11.32	10.58	10.90	9.95	10.96	10.40	10.40	10.83	10.39	9.81	10.80
Over 5 Years	9.57	10.48	10.26	10.62	9.51	10.28	10.35	10.33	10.45	10.28	9.58	10.38	9.30	10.73
Other Loans														
Up to 1 Year	5.79	6.82	6.12	6.43	6.28	6.24	6.17	6.17	6.27	6.41	6.17	6.36	6.09	6.51
Greater than 1 Year to 5 Years	7.65	7.44	7.91	7.76	8.19	7.82	7.94	7.79	7.42	7.40	7.61	7.88	7.34	7.83
Over 5 Years	6.89	7.25	6.96	6.77	6.75	6.78	6.97	6.90	6.76	6.35	7.04	6.83	6.96	7.18

Including Commercial Banks and Specialized Banks

Table 11: Monetary Survey

(In KHR Billion)

	Dec-17	Dec-18	Jan-19	Feb-19	Mar-19
Net Foreign Assets	42,575.3	55,214.3	56,980.8	57,217.9	58,148.8
Foreign Assets	60,893.4	73,648.9	74,791.4	75,105.8	76,508.1
Foreign Liabilities	-18,318.1	-18,434.7	-17,810.6	-17,887.9	-18,359.2
Net Domestic Assets	28,743.5	33,228.9	33,373.4	34,080.0	33,997.2
Domestic Credit	55,856.5	67,616.3	68,769.4	69,415.7	69,194.1
Net Claims on Government	-11,066.5	-14,803.7	-15,207.1	-15,403.9	-17,381.0
Claims on Government	270.2	0.0	0.0	0.0	0.0
Deposits of Government	-11,336.8	-14,803.7	-15,207.1	-15,403.9	-17,381.0
Non-Government	66,923.0	82,420.0	83,976.6	84,819.7	86,575.2
State Enterprises	0.4	0.6	0.9	0.8	0.8
Private Sector	66,922.6	82,419.3	83,975.7	84,818.9	86,574.4
Of Which in Foreign Currency	66,188.5	81,594.7	83,133.9	83,964.2	85,693.5
Other Items Net	-27,113.0	-34,387.3	-35,396.0	-35,335.7	-35,197.0
Restricted Deposits	-1,624.2	-1,973.8	-2,115.9	-2,030.0	-2,068.0
Capital & Reserves	-22,862.3	-26,759.3	-28,180.8	-28,341.0	-28,594.0
Others	-2,626.4	-5,654.3	-5,099.3	-4,964.8	-4,534.9
Liquidity (M2)	71,318.9	88,443.2	90,354.2	91,297.9	92,146.0
Money (M1)	9,428.4	10,226.8	10,522.5	10,994.0	10,782.0
Currency Outside Banks	8,301.6	9,255.2	9,357.3	9,699.9	9,664.1
Demand Deposits	1,126.9	971.7	1,165.1	1,294.0	1,117.8
Quasi-Money	61,890.4	78,216.4	79,831.8	80,303.9	81,364.0
Time and Savings Deposits	2,615.5	3,208.6	2,991.0	2,980.6	2,660.2
Foreign Currency Deposits	59,275.0	75,007.8	76,840.7	77,323.3	78,703.8

Table 12: Monetary Survey
(Monthly Change)

	Change in KHR Billion			Percentage Change		
	Jan-19	Feb-19	Mar-19	Jan-19	Feb-19	Mar-19
Net Foreign Assets	1,766.5	237.1	931.0	3.2	0.4	1.6
Foreign Assets	1,142.4	314.4	1,402.3	1.6	0.4	1.9
Foreign Liabilities	-624.1	77.3	471.3	-3.4	0.4	2.6
Net Domestic Assets	144.5	706.6	-82.8	0.4	2.1	-0.2
Domestic Credit	1,153.2	646.3	-221.6	1.7	0.9	-0.3
Net Claims on Government	-403.4	-196.8	-1,977.1	-2.7	-1.3	-12.8
Claims on Government	0.0	0.0	0.0	0.0	0.0	0.0
Deposits of Government	403.4	196.8	1,977.1	2.7	1.3	12.8
Non-Government	1,556.6	843.1	1,755.5	1.9	1.0	2.1
State Enterprises	0.3	-0.1	0.0	40.9	-10.3	-3.0
Private Sector	1,556.4	843.2	1,755.5	1.9	1.0	2.1
Of Which in Foreign Currency	1,539.2	830.3	1,729.3	1.9	1.0	2.1
Other	-1,008.7	60.2	138.8	-2.9	0.2	0.4
Restricted Deposits	142.1	-85.8	38.0	7.2	-4.1	1.9
Capital & Reserves	1,421.5	160.2	253.0	5.3	0.6	0.9
Others	554.9	134.6	429.8	9.8	2.6	8.7
Liquidity (M2)	1,911.0	943.6	848.1	2.2	1.0	0.9
Money (M1)	295.7	471.5	-212.0	2.9	4.5	-1.9
Currency Outside Banks	102.2	342.6	-35.8	1.1	3.7	-0.4
Demand Deposits	193.5	128.9	-176.2	19.9	11.1	-13.6
Quasi-Money	1,615.4	472.1	1,060.1	2.1	0.6	1.3
Time and Savings Deposits	-217.6	-10.4	-320.4	-6.8	-0.3	-10.8
Foreign Currency Deposits	1,832.9	482.6	1,380.6	2.4	0.6	1.8

Chart 8: Monetary Survey

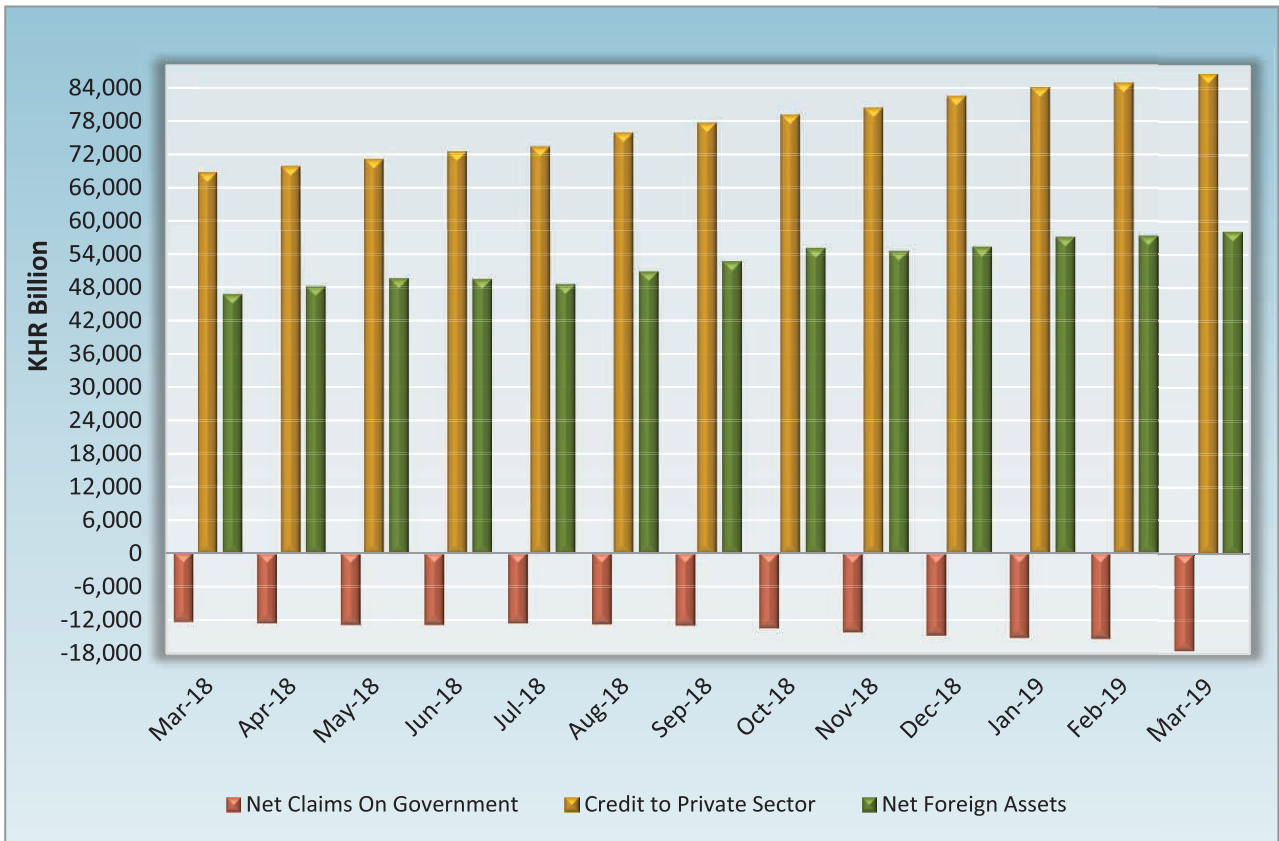


Chart 9: Components of Money Supply

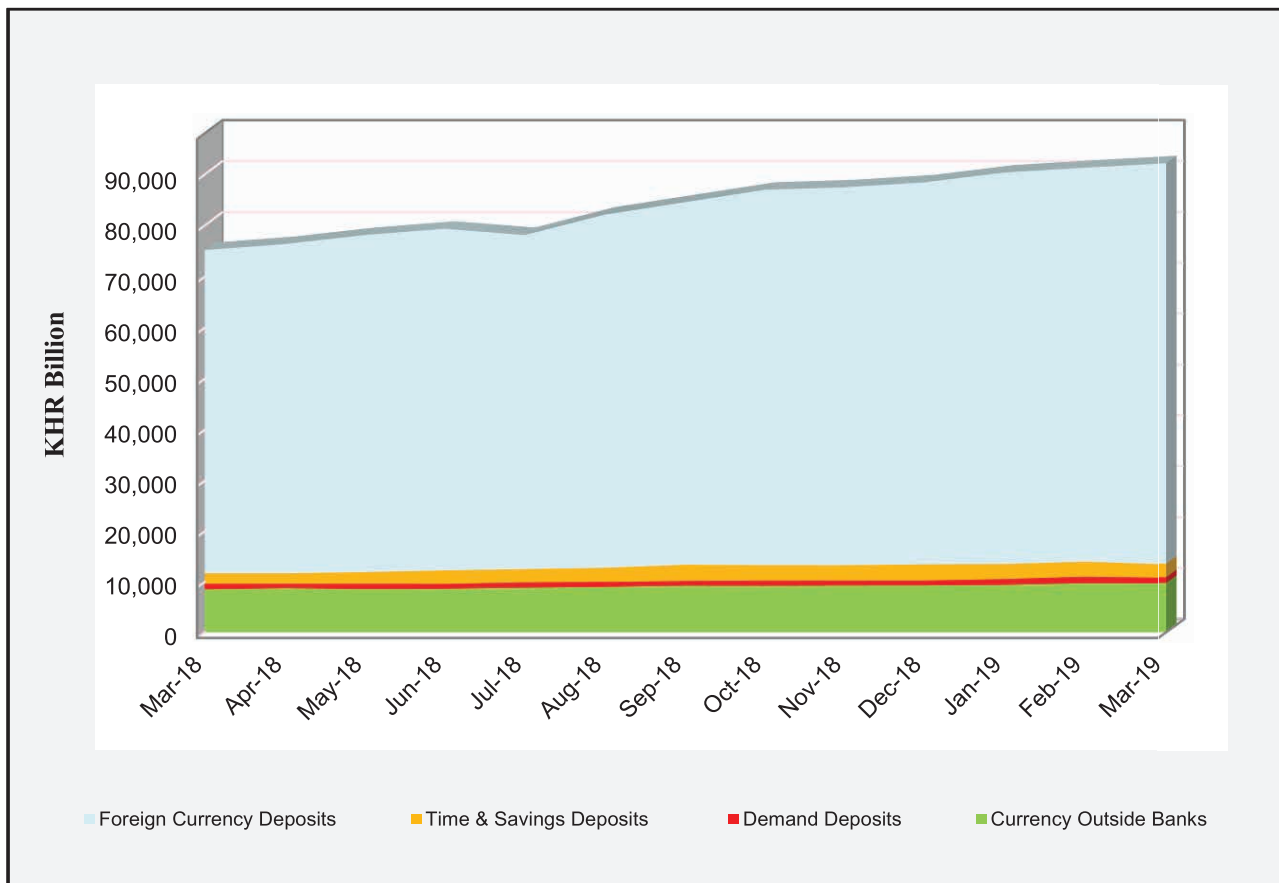


Table 13: Deposit Money Banks' Balance Sheet

(In KHR Billion)

	Dec-17	Dec-18	Jan-19	Feb-19	Mar-19
Net Foreign Assets	-6,156.7	-2,971.0	-2,780.3	-2,339.3	-2,776.1
Foreign Assets	11,768.6	14,994.8	14,560.1	15,079.2	15,115.6
Foreign Liabilities	17,925.2	17,965.8	17,340.4	17,418.5	17,891.6
Net Domestic Assets	41,131.1	49,371.1	49,531.9	49,584.1	50,959.4
Net Domestic Credit	65,750.2	80,271.2	81,683.1	82,458.5	83,773.6
Net Claims on Government	-1,172.8	-1,880.1	-1,940.4	-2,007.5	-2,413.4
Claims on Public Enterprises	0.4	0.6	0.9	0.8	0.8
Claims on Private Sector	66,922.6	82,419.3	83,975.7	84,818.9	86,574.4
Net claims on National Bank of Cambodia	0.0	-268.7	-353.1	-353.7	-388.2
Other Assets (net)	-24,619.1	-30,900.1	-32,151.1	-32,874.4	-32,814.2
Reserves	27,852.9	32,729.7	34,078.2	34,191.9	34,185.2
Cash	655.7	737.2	831.9	878.6	877.1
Deposits at National Bank of Cambodia	26,285.3	30,556.3	32,010.5	31,785.4	31,170.5
Other Credits at National Bank of Cambodia	911.9	1,436.2	1,235.8	1,527.8	2,137.6
Total Deposits	62,827.4	79,129.8	80,829.8	81,436.7	82,368.5
Demand Deposits	937.0	913.4	998.1	1,132.8	1,004.5
Time and Savings Deposits	2,615.5	3,208.6	2,991.0	2,980.6	2,660.2
Foreign Currency Deposits	59,275.0	75,007.8	76,840.7	77,323.3	78,703.8
Total Assets	117,709.7	142,305.9	144,758.3	145,727.3	148,352.3
	(Monthly Percentage Change)				
Net Foreign Assets	15.5	353.6	-6.4	-15.9	18.7
Foreign Assets	-4.3	-10.9	-2.9	3.6	0.2
Foreign Liabilities	1.7	2.8	-3.5	0.5	2.7
Net Domestic Assets	2.8	-45.9	0.3	0.1	2.8
Net Domestic Credit	2.3	2.3	1.8	0.9	1.6
Net Claims on Government	25.7	1.6	3.2	3.5	20.2
Claims on Public Enterprises	2.5	19.0	40.9	-10.3	-3.0
Claims on Private Sector	2.7	2.6	1.9	1.0	2.1
Net claims on National Bank of Cambodia	0.0	100.0	31.4	0.2	9.7
Other Assets (net)	1.6	-341.3	4.0	2.2	-0.2
Reserves	-0.1	6.5	4.1	0.3	0.0
Cash	-2.9	-26.2	12.8	5.6	-0.2
Deposits at National Bank of Cambodia	0.1	6.4	4.8	-0.7	-1.9
Other Credits at National Bank of Cambodia	-2.4	43.0	-14.0	23.6	39.9
Total Deposits	0.4	1.3	2.1	0.8	1.1
Demand Deposits	2.0	5.6	9.3	13.5	-11.3
Time and Savings Deposits	-1.1	5.0	-6.8	-0.3	-10.8
Foreign Currency Deposits	0.5	1.1	2.4	0.6	1.8
Total Assets	1.1	1.1	1.7	0.7	1.8

Table 14: Analytical Balance Sheet of The Monetary Authorities

(In KHR Billions)

	Dec-17	Dec-18	Jan-19	Feb-19	Mar-19
Reserve money	36,692.6	44,156.5	44,770.1	44,729.3	44,926.5
Currency Outside Banks	8,301.6	9,255.2	9,357.5	9,699.9	9,664.1
Vault Cash	655.7	737.2	831.8	878.6	877.1
Bank Deposits	27,545.4	34,105.9	34,413.8	33,989.5	34,271.9
Required Reserves	10,926.8	13,343.9	13,646.0	13,790.2	13,992.3
Others	16,618.6	20,762.0	20,767.8	20,199.3	20,279.6
Other Deposits	189.9	58.3	167.1	161.3	113.3
Net Foreign Assets	48,732.0	58,185.3	59,761.1	59,557.1	60,924.9
Foreign Assets	49,124.9	58,654.1	60,231.3	60,026.6	61,392.5
Foreign Liabilities	392.9	468.9	470.2	469.4	467.6
Net Domestic Assets	-12,039.4	-14,028.8	-14,991.0	-14,827.8	-15,998.4
Net Credit to Government	-9,893.7	-12,923.6	-13,266.8	-13,396.4	-14,967.7
Claims	270.2	0.0	0.0	0.0	0.0
Deposits	10,164.0	12,923.6	13,266.8	13,396.4	14,967.7
Net Claims on Banks	-1,414.2	-1,395.0	-1,404.7	-1,233.7	-1,071.2
Other Items (net)	-731.4	289.9	-319.5	-197.8	40.5
	Percentage Change				
Reserve money	0.4	5.4	1.4	-0.1	0.4
Currency Outside Banks	2.8	0.3	1.1	3.7	-0.4
Vault Cash	-2.9	-26.2	12.8	5.6	-0.2
Bank Deposits	-0.3	8.1	0.9	-1.2	0.8
Required Reserves	1.4	1.6	2.3	1.1	1.5
Others	-1.4	12.7	0.0	-2.7	0.4
Other Deposits	5.2	-55.3	186.8	-3.5	-29.7
Net Foreign Assets	1.5	5.6	2.7	-0.3	2.3
Foreign Assets	1.5	5.5	2.7	-0.3	2.3
Foreign Liabilities	0.3	0.2	0.3	-0.2	-0.4
Net Domestic Assets	5.2	6.2	6.9	-1.1	7.9
Net Credit to Government	4.4	4.7	2.7	1.0	11.7
Claims	0.0	0.0	0.0	0.0	0.0
Deposits	4.3	4.7	2.7	1.0	11.7
Net Claims on Banks	3.6	-6.1	0.7	-12.2	-13.2
Other Items (net)	21.2	-53.5	-210.2	-38.1	-120.5

Table 15: Credit Granted by Deposit Money Banks Classified by Industry

(In KHR Billion)

	Dec-17	Dec-18	Jan-19	Feb-19	Mar-19
1. Financial Institutions	1,876.8	3,013.7	2,847.4	2,829.3	2,971.6
1.1. National Bank of Cambodia	0.0	0.0	0.0	0.0	0.0
1.2. Depository Institutions	1,189.3	2,059.2	1,802.1	1,766.6	1,914.8
1.3. Other Financial Institutions	687.5	954.4	1,045.3	1,062.7	1,056.8
2. Non-Financial Institutions	54,344.9	64,978.6	65,800.9	66,419.2	67,878.3
2.1. Agriculture, Forestry and Fishing	7,064.9	7,523.9	7,610.3	7,573.9	7,608.3
2.2. Mining and Quarrying	241.2	232.6	232.5	223.3	211.0
2.3. Manufacturing	4,272.4	4,537.2	4,416.6	4,427.4	4,362.5
2.4. Utilities	514.2	571.3	569.9	708.3	720.6
2.5. Construction	6,381.2	7,787.3	7,753.1	7,873.9	8,424.9
2.6. Wholesale Trade	8,368.4	9,654.6	9,989.6	9,982.9	10,040.6
2.7. Retail Trade	12,132.7	13,672.5	13,853.9	13,990.1	14,191.8
2.8. Hotels and Restaurants	3,055.2	3,998.3	4,057.6	4,061.7	4,300.3
2.9. Transport and Storage	1,268.0	1,668.3	1,691.0	1,711.6	1,728.6
2.10. Information Media and Telecommunications	559.9	717.0	747.5	702.6	707.0
2.11. Rental and Operational Leasing Activities, Excluding Real Estate Leasing and Rentals	1,567.1	2,666.4	2,696.7	2,775.3	2,944.5
2.12. Real Estate Activities	4,005.0	6,210.4	6,371.4	6,449.8	6,643.7
2.13. Other Non-Financial Services	4,914.7	5,738.7	5,810.8	5,938.4	5,994.2
3. Personal Essentials	11,060.8	15,707.3	16,435.0	16,658.0	16,922.9
3.1. Personal Lending	4,611.7	6,978.9	7,465.9	7,433.8	7,431.3
3.2. Credit Cards	152.1	188.5	191.3	188.0	190.0
3.3. Mortgages, Owner-Occupied Housing only	6,297.0	8,539.8	8,777.8	9,036.3	9,301.6
4. Other Lending	988.6	1,036.7	927.9	933.8	953.7
Total Gross Loan	68,271.1	84,736.2	86,011.2	86,840.3	88,726.6

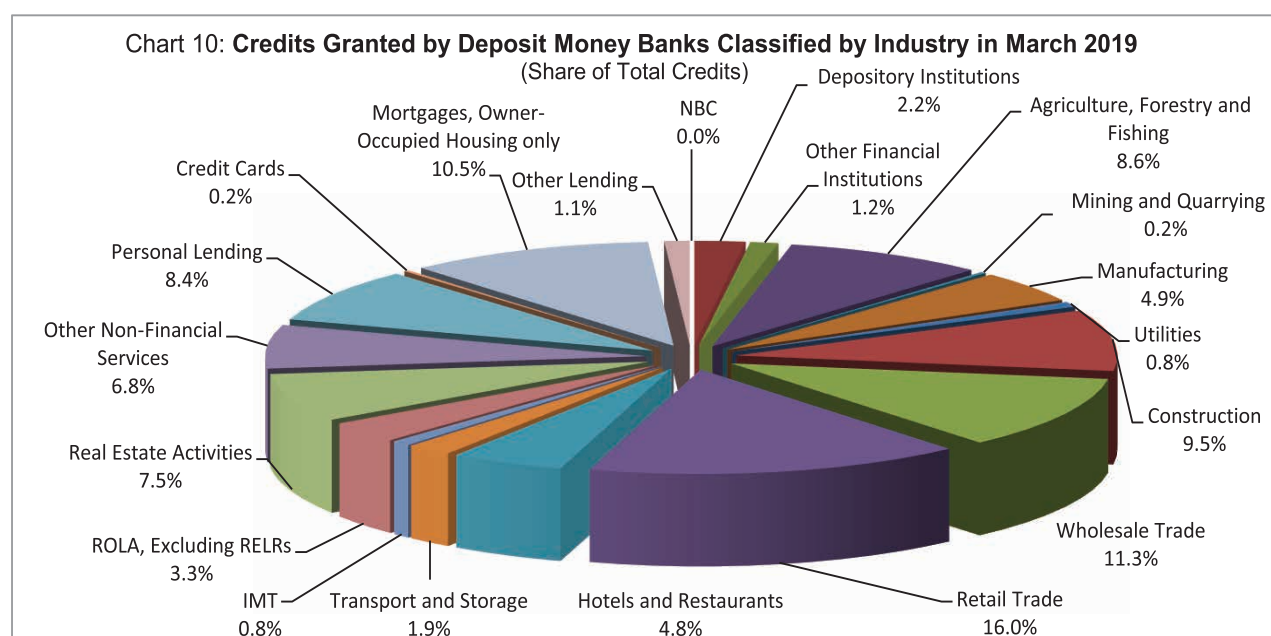


Table 16: Monthly Change of Credit Granted by Deposit Money Banks Classified by Industry

	Dec-17	Dec-18	Jan-19	Feb-19	Mar-19
	(Monthly Change in KHR Billion)				
1. Financial Institutions	73.8	152.2	-166.2	-18.2	142.4
1.1. National Bank of Cambodia	0.0	0.0	0.0	0.0	0.0
1.2. Depository Institutions	87.8	125.4	-257.1	-35.6	148.3
1.3. Other Financial Institutions	-14.0	26.8	90.9	17.4	-5.9
2. Non-Financial Institutions	1,075.2	1,175.9	822.3	618.3	1,459.0
2.1. Agriculture, Forestry and Fishing	134.2	60.1	86.3	-36.4	34.5
2.2. Mining and Quarrying	-35.0	-33.0	-0.1	-9.2	-12.3
2.3. Manufacturing	-6.4	66.5	-120.6	10.8	-64.8
2.4. Utilities	50.7	2.8	-1.4	138.4	12.4
2.5. Construction	266.1	316.9	-34.2	120.8	551.0
2.6. Wholesale Trade	1.9	50.8	335.0	-6.7	57.8
2.7. Retail Trade	397.0	370.8	181.4	136.2	201.7
2.8. Hotels and Restaurants	-43.4	11.9	59.3	4.1	238.6
2.9. Transport and Storage	66.7	48.4	22.7	20.7	17.0
2.10. Information Media and Telecommunications	39.0	53.3	30.5	-44.9	4.5
2.11. Rental and Operational Leasing Activities, Excluding Real Estate Leasing and Rentals	42.3	168.6	30.3	78.6	169.2
2.12. Real Estate Activities	112.6	-112.1	161.0	78.4	193.9
2.13. Other Non-Financial Services	49.7	170.8	72.1	127.6	55.8
3. Personal Essentials	298.1	821.6	727.8	223.0	264.9
3.1. Personal Lending	185.0	381.1	487.0	-32.2	-2.5
3.2. Credit Cards	-2.4	-0.3	2.7	-3.3	2.0
3.3. Mortgages, Owner-Occupied Housing only	115.5	440.8	238.0	258.5	265.4
4. Other Lending	75.2	45.3	-108.8	5.9	19.9
Total Gross Loan	1,522.2	2,195.1	1,275.1	829.1	1,886.2
	(Monthly Change in Percent)				
1. Financial Institutions	4.1	5.3	-5.5	-0.6	5.0
1.1. National Bank of Cambodia	0.0	0.0	0.0	0.0	0.0
1.2. Depository Institutions	8.0	6.5	-12.5	-2.0	8.4
1.3. Other Financial Institutions	-2.0	2.9	9.5	1.7	-0.6
2. Non-Financial Institutions	2.0	1.8	1.3	0.9	2.2
2.1. Agriculture, Forestry and Fishing	1.9	0.8	1.1	-0.5	0.5
2.2. Mining and Quarrying	-12.7	-12.4	0.0	-4.0	-5.5
2.3. Manufacturing	-0.1	1.5	-2.7	0.2	-1.5
2.4. Utilities	10.9	0.5	-0.2	24.3	1.7
2.5. Construction	4.4	4.2	-0.4	1.6	7.0
2.6. Wholesale Trade	0.0	0.5	3.5	-0.1	0.6
2.7. Retail Trade	3.4	2.8	1.3	1.0	1.4
2.8. Hotels and Restaurants	-1.4	0.3	1.5	0.1	5.9
2.9. Transport and Storage	5.6	3.0	1.4	1.2	1.0
2.10. Information Media and Telecommunications	7.5	8.0	4.2	-6.0	0.6
2.11. Rental and Operational Leasing Activities, Excluded Real Estate Leasing and Rentals	2.8	6.7	1.1	2.9	6.1
2.12. Real Estate Activities	2.9	-1.8	2.6	1.2	3.0
2.13. Other Non-Financial Services	1.0	3.1	1.3	2.2	0.9
3. Personal Essentials	2.8	5.5	4.6	1.4	1.6
3.1. Personal Lending	4.2	5.8	7.0	-0.4	0.0
3.2. Credit Cards	-1.6	-0.1	1.5	-1.7	1.1
3.3. Mortgages, Owner-Occupied Housing only	1.9	5.4	2.8	2.9	2.9
4. Other Lending	8.2	4.6	-10.5	0.6	2.1
Total Gross Loan	2.3	2.7	1.5	1.0	2.2

Table 17: Deposits with Deposit Money Banks

(In KHR Billion)

	Dec-17	Dec-18	Jan-19	Feb-19	Mar-19
Deposits in KHR					
Demand deposits	1,383.9	1,694.2	1,835.8	1,969.3	2,253.9
Savings deposits	1,207.3	1,516.3	1,406.8	1,357.8	1,325.8
Fixed deposits	1,494.2	2,149.2	2,031.5	2,097.3	1,754.7
Others	46.2	86.1	63.7	64.7	46.2
Total	4,131.7	5,445.9	5,337.8	5,489.1	5,380.6
Deposits in Foreign Currency*					
Demand deposits	14,421.6	19,246.4	20,621.2	20,732.8	21,003.6
Savings deposits	20,967.8	29,692.6	30,142.8	30,210.7	30,914.4
Fixed deposits	29,135.2	33,266.3	33,329.9	33,481.8	34,006.8
Others	1,028.2	1,025.8	1,093.4	1,099.6	1,023.3
Total	65,552.8	83,231.0	85,187.3	85,524.9	86,948.1
Grand Total	69,684.4	88,676.9	90,525.1	91,014.0	92,328.7

* Deposits in foreign currency include deposits of Cambodian residents and non-residents

Chart 11: **Deposits with Deposit Money Banks Classified by Currency, as of March 2019**
(Share of Grand Total Deposits)

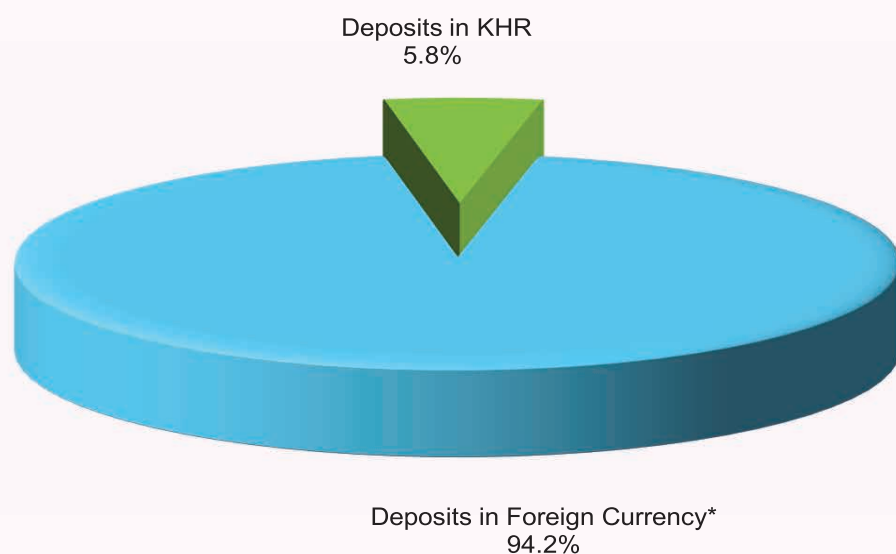


Table 18: Monthly Change of Deposits with Deposit Money Banks

	Dec-17	Dec-18	Jan-19	Feb-19	Mar-19
	(Change in KHR Billion)				
Deposits in KHR					
Demand deposits	-33.6	81.7	141.5	133.5	284.6
Savings deposits	-28.2	109.9	-109.5	-49.0	-32.0
Fixed deposits	68.8	44.8	-117.7	65.8	-342.7
Others	2.7	23.0	-22.4	1.0	-18.5
Total	9.7	259.4	-108.1	151.4	-108.5
Deposits in Foreign Currency					
Demand deposits	570.9	216.4	1,374.9	111.5	270.8
Savings deposits	-496.2	459.4	450.2	67.9	703.7
Fixed deposits	454.2	526.0	63.6	152.0	524.9
Others	51.7	-1.5	67.6	6.2	-76.2
Total	580.6	1,200.3	1,956.3	337.6	1,423.2
Grand Total	590.3	1,459.7	1,848.2	488.9	1,314.7
	(Percentage Change)				
Deposits in KHR					
Demand deposits	-2.4	5.1	8.4	7.3	14.5
Savings deposits	-2.3	7.8	-7.2	-3.5	-2.4
Fixed deposits	4.8	2.1	-5.5	3.2	-16.3
Others	6.3	36.5	-26.0	1.6	-28.5
Total	0.2	5.0	-2.0	2.8	-2.0
Deposits in Foreign Currency					
Demand deposits	4.1	1.1	7.1	0.5	1.3
Savings deposits	-2.3	1.6	1.5	0.2	2.3
Fixed deposits	1.6	1.6	0.2	0.5	1.6
Others	5.3	-0.2	6.6	0.6	-6.9
Total	0.9	1.5	2.4	0.4	1.7
Grand Total	0.9	1.7	2.1	0.5	1.4

Chart 12: Deposits in KHR Classified by Type, as of March 2019
(Share of Total KHR Deposits)

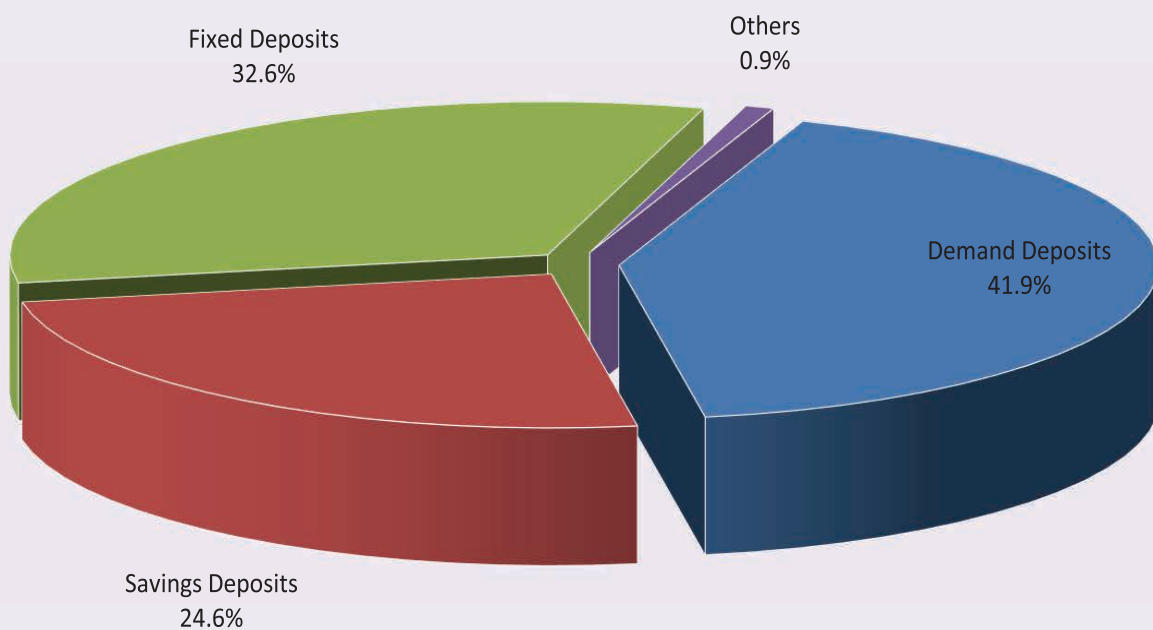


Chart 13: Deposits in Foreign Currency Classified by Type, as of March 2019
(Share of Total Foreign Currency Deposits)

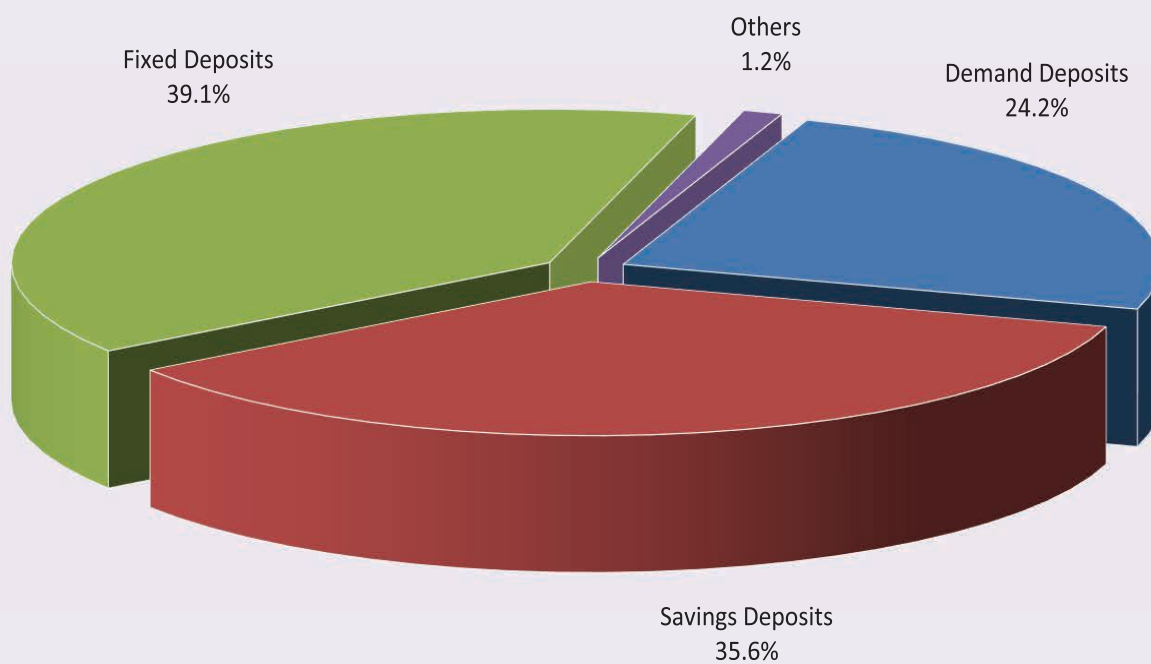


Table 19: Credit Granted by Micro-Finance Institutions*

Period	Numbers of				Loan Outstanding (In KHR Billion)	Interest Rate	
	District	Commune	Village	Household		Monthly	Annually
Dec-11	1,648	10,920	60,551	1,141,913	2,591	2% - 3%	24% - 36%
Dec-12	2,121	13,885	76,187	1,344,255	3,617	2% - 3%	29% - 37%
Dec-13	2,282	16,384	89,829	1,610,844	5,364	2% - 3%	27%-39%
Dec-14	2,754	18,254	107,964	1,844,893	8,340	2% - 3%	27%-39%
Dec-15	4,576	27,510	141,514	2,149,180	12,365	2% - 4%	25%-41%
Dec-16	5,971	32,599	155,499	2,129,907	12,954	2% - 4%	25%-41%
2017*							
Jan	3,629	21,548	115,192	1,849,489	13,027	2% - 3.5%	25%-41%
Feb	3,585	21,436	115,727	1,837,273	13,252	2% - 3.7%	25%-41%
Mar	3,160	19,093	106,500	1,794,532	13,625	2% - 3.7%	24.5%-41%
	Numbers of Branches			Number of Borrowers**	Loan Outstanding (In KHR Billion)	Interest Rate	
	Head Office	Province/ Krong	District/Khan			Monthly	Annually
May	71	361	1,003	1,826,138	14,275	1.6%-3.0%	19.9%-35.1%
Jun	74	372	995	1,818,719	14,663	1.6%-3.0%	19.8%-33.7%
Jul	77	375	1,036	1,815,820	15,214	1.6%-2.8%	19.5%-33.0%
Aug	74	364	926	1,804,506	15,779	1.5%-2.7%	18.9%-32.3%
Sep	76	357	873	1,793,039	16,163	1.4%-2.6%	17.5%-30.3%
Oct	76	358	878	1,785,078	16,623	1.4%-2.5%	16.8%-29.2%
Nov	76	365	986	1,789,687	17,015	1.4%-2.5%	17.5%-29.2%
Dec	76	366	975	1,776,467	17,236	1.4%-2.5%	16.9%-28.8%
2018							
Jan	76	374	945	1,764,321	17,621	1.4%-2.3%	17.5%-26.9%
Feb	76	377	953	1,764,916	18,002	1.4%-2.3%	17.3%-26.6%
Mar	77	388	955	1,774,935	18,475	1.4%-2.9%	16.9%-26.3%
Apr	77	368	930	1,794,347	18,682	1.3%-2.2%	16.4%-26.1%
May	77	365	936	1,791,093	19,041	1.3%-2.2%	16.4%-26.1%
Jun	77	372	937	1,798,122	19,250	1.3%-2.2%	16.1%-25.4%
Jul	77	377	944	1,805,677	19,501	1.3%-2.2%	16.1%-25.4%
Aug	79	376	947	1,825,842	20,278	1.2%-2.1%	15.4%-24.8%
Sep	77	372	943	1,828,019	20,621	1.2%-2.1%	15.3%-25.0%
Oct	78	394	947	1,851,259	21,045	1.2%-2.0%	13.4%-24.0%
Nov	79	407	946	1,867,806	21,567	1.2%-2.1%	15.1%-24.0%
Dec	80	399	944	1,872,916	21,813	1.2%-2.0%	15.1%-24.0%
2019							
Jan	80	399	944	1,881,822	22,630	1.2%-2.0%	15.0%-24.0%
Feb	81	399	944	1,893,175	23,206	1.2%-1.9%	14.7%-22.7%
Mar	81	399	947	1,917,689	24,020	1.2%-1.9%	15.0%-22.7%

* Including MFI and MDI

Table 20: KHR-Denominated Checks Clearing through Clearing House

Date	Number of Cleared Check	Number of Working Day	Number of Cleared Check Per Day	Total Amount (In KHR Billion)	Daily Average Amount (In KHR Billion)	Returned Check	
						Number	Amount (In KHR Billion)
	1	2	3 = 1/2	4	5 = 4/2	6	7
Dec-10	2,886	22	131	175.7	8.0	9	0.3
Total	32,854	236	139	1,627.2	6.9	111	2.6
Dec-11	3,320	21	158	178.2	8.5	2	0.3
Total	34,742	236	147	1,820.5	7.7	87	4.8
Dec-12	3,056	20	153	163.7	8.2	16	1.15
Total	39,288	234	168	2,344.0	10.0	106	12.4
Dec-13	3,651	20	183	250.5	12.5	27	0.27
Total	42,993	231	186	3,505.7	15.2	212	43.7
Dec-14	4,074	20	204	391.5	19.6	8	2.14
Total	44,778	232	193	3,789.3	16.3	145	33.3
Dec-15	10,709	22	487	519.9	23.6	29	0.79
Total	106,919	233	459	4,854.2	20.8	252	47.4
Dec-16	3,938	22	179	490.0	22.3	13	3.15
Total	82,291	242	340	5,421.8	22.4	186	117.5
Dec-17	3,074	20	154	599.0	30.0	22	12.48
Total	37,485	239	1,885	6,607.8	333.1	138	28.51
2018							
Jan	3,319	20	166	668.3	33.4	9	0.06
Feb	2,705	20	135	682.3	34.1	12	30.60
Mar	3,412	21	162	968.6	46.1	16	1.30
Apr	3,096	18	172	511.4	28.4	15	10.21
May	3,182	17	187	975.3	57.4	28	4.33
Jun	3,008	19	158	805.8	42.4	7	0.27
Jul	3,180	21	151	676.3	32.2	13	3.01
Aug	3,236	23	141	797.3	34.7	15	0.58
Sep	3,309	19	174	617.2	32.5	42	9.54
Oct	3,263	17	192	773.1	45.5	11	9.31
Nov	3,545	18	197	1,013.4	56.3	13	77.12
Dec	2,994	19	158	935.1	49.2	16	6.58
Total	38,249	232	165	9,424.1	40.6	197	152.90
2019							
Jan	3,620	21	172	1,318.5	62.79	13	0.63
Feb	3,279	19	173	941.9	49.57	12	0.45
Mar	3,233	20	162	1,168.3	58.42	13	2.70
Total	10,132	60	169	3,428.8	57.15	38	3.78

Table 21: USD-Denominated Checks Clearing through Clearing House

Date	Number of Checks Cleared	Number of days Cleared	Number of Cleared Check per Day	Total Amount (In USD Million)	Daily Average Amount (In USD Million)	Returned Checks	
						Number	Amount
						6	7 (In USD Million)
	1	2	3 = 1/2	4	5 = 4/2		
Dec-10	49,673	22	2,258	795.5	36.2	275	9.9
Total	485,189	236	2,056	7,008.7	29.7	2,766	47.5
Dec-11	52,700	21	2,510	996.9	47.5	270	7.5
Total	558,894	236	2,368	9,572.7	40.6	3,214	91.9
Dec-12	60,647	20	3,032	1,112.8	55.6	459	25.8
Total	658,329	234	2,813	12,574.9	53.7	4,245	188.1
Dec-13	73,088	20	3,654	1,417.7	70.9	511	17.0
Total	803,352	231	3,478	14,989.2	64.9	6,240	249.7
Dec-14	83,578	20	4,179	1,727.0	86.3	545	36.1
Total	888,970	231	3,848	17,989.5	77.9	5,894	421.8
Dec-15	98,062	22	4,457	1,859.8	84.5	728	21.2
Total	992,434	233	4,259	20,758.4	89.1	7,170	268.0
Dec-16	92,820	22	4,219	2,220.4	100.9	778	44.8
Total	1,025,209	242	4,236	21,790.4	90.0	8,738	439.6
Dec-17	101,093	20	5,055	2,824.6	141.2	789	37.6
Total	1,107,752	239	4,635	26,812.7	112.2	8,863	440.4
2018							
Jan	102,974	20	5,149	2,859.1	143.0	858	77.0
Feb	95,365	20	4,768	2,701.2	135.1	745	35.4
Mar	107,286	21	5,109	3,064.7	145.9	860	50.9
Apr	86,253	18	4,792	2,736.2	152.0	661	39.6
May	109,311	17	6,430	3,270.6	192.4	964	61.4
Jun	99,981	19	5,262	3,356.2	176.6	795	46.5
Jul	106,272	21	5,061	3,562.3	169.6	830	37.7
Aug	113,994	23	4,956	3,915.9	170.3	823	98.0
Sep	98,989	19	5,210	5,280.3	277.9	1,322	2,069.7
Oct	101,438	17	5,967	3,190.0	187.7	901	70.3
Nov	104,391	18	5,800	3,609.1	200.5	811	36.0
Dec	111,978	19	5,894	3,917.1	206.2	904	63.6
Total	1,238,232	232	5,337	41,462.7	178.7	10,474	2686.1
2019							
Jan	118,135	21	5,625	5,128.7	244.2	928	76.5
Feb	94,722	19	4,985	3,172.1	167.0	687	33.1
Mar	111,842	20	5,592	3,945.0	197.3	848	81.2
Total	324,699	60	5,412	12,245.8	204.1	2,463	190.9

Table 22: Visitor Arrivals in Cambodia

	2019			% of Total		% Change	
	Jan	Feb	Mar	Feb	Mar	Feb/Jan	Mar/Feb
(Mode of Arrival)							
Phnom Penh International Airport	172,695	194,439	214,575	32.5	33.9	12.6	10.4
Keng Kong International Airport	27,441	47,662	183,437	8.0	29.0	73.7	284.9
Siem Reap International Airport	203,270	197,172	58,431	33.0	9.2	-3.0	-70.4
Land	219,336	136,654	156,319	22.9	24.7	-37.7	14.4
Boat	24,464	21,556	20,402	3.6	3.2	-11.9	-5.4
Preah Vihea	0	0	0	0.0	0.0	0.0	1.0
Total	647,206	597,483	633,164	100.0	100.0	-7.7	6.0
(Arrival by Purpose of Visit)							
Tourist	564,406	474,273	464,133	79.4	73.3	-16.0	-2.1
Business and Professional	59,533	111,584	146,439	18.7	23.1	87.4	31.2
Others and not specified	23,267	11,626	22,592	1.9	3.6	-50.0	94.3
Total	647,206	597,483	633,164	100.0	100.0	-7.7	6.0
(Top-Ten Countries of Passenger Arrivals)							
China (PRC)	182,449	236,123	264,864	39.5	41.8	29.4	12.2
Vietnam	63,493	60,773	62,597	10.2	9.9	-4.3	3.0
Lao PDR	62,134	24,371	34,984	4.1	5.5	-60.8	43.5
Thailand	44,087	25,110	28,745	4.2	4.5	-43.0	14.5
United States of America	30,254	23,711	25,063	4.0	4.0	-21.6	5.7
South Korea	41,364	31,503	22,852	5.3	3.6	-23.8	-27.5
Japan	19,435	20,316	20,493	3.4	3.2	4.5	0.9
United Kingdom	19,654	20,167	19,555	3.4	3.1	2.6	-3.0
France	22,189	19,898	17,314	3.3	2.7	-10.3	-13.0
Malaysia	17,648	14,514	16,542	2.4	2.6	-17.8	14.0
Others	144,499	120,997	120,155	20.3	19.0	-16.3	-0.7
Total	647,206	597,483	633,164	100.0	100.0	-7.7	6.0

Source: Ministry of Tourism

Table 23: Cambodia's Imports and Exports

(In KHR Billion)

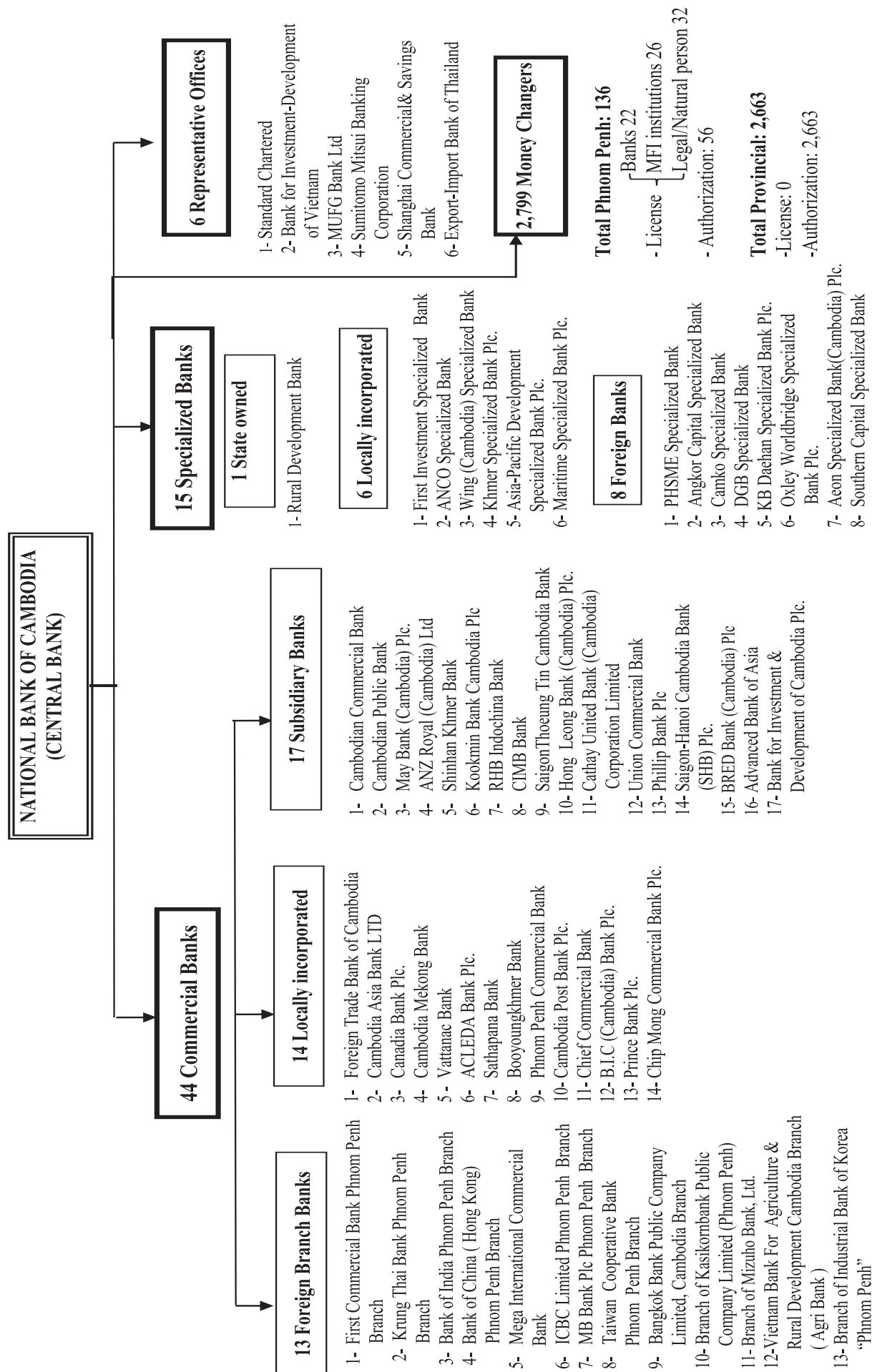
	2019			Change in KHR Billion		Change in %	
	Jan*	Feb	Mar	Feb/Jan	Mar/Feb	Feb/Jan	Mar/Feb
Imports by Commodity							
Medicine	72.8	56.8	76.7	-16.0	19.9	-21.9	35.1
Cigarette	122.3	101.3	52.6	-21.0	-48.6	-17.2	-48.0
Food and Beverage	316.9	271.1	293.0	-45.9	21.9	-14.5	8.1
Equipment Construction	239.2	237.1	208.1	-2.1	-29.0	-0.9	-12.2
Cement	27.5	19.4	35.4	-8.1	16.0	-29.4	82.6
Steel	142.0	165.6	143.3	23.6	-22.3	16.6	-13.5
Phones	15.1	11.0	27.3	-4.1	16.3	-27.1	147.5
T.V	6.6	0.7	1.1	-5.9	0.4	-89.3	53.0
Other Electronic Equipment	19.0	14.6	36.6	-4.4	22.0	-23.1	150.4
Garment	182.2	159.6	198.9	-22.6	39.4	-12.4	24.7
Fabric	1,567.1	1,054.3	1,239.9	-512.9	185.6	-32.7	17.6
Vehicle	645.9	562.9	675.8	-82.9	112.9	-12.8	20.0
Equipment of Cold	13.7	13.6	15.8	-0.1	2.2	-0.9	16.1
Gold	70.1	26.0	33.7	-44.1	7.7	-63.0	29.8
Oil	540.5	552.7	602.6	12.3	49.9	2.3	9.0
Fertilizer	43.9	35.6	28.6	-8.3	-7.0	-18.9	-19.7
Others	2,646.3	1,946.5	2,811.8	-699.8	865.3	-26.4	44.5
Total Imports (fob)	6,671.1	5,228.8	6,481.3	-1,442.3	1,252.5	-21.6	24.0
Exports by Commodity							
Garment	2,898.8	2,732.4	3,126.0	-166.5	393.6	-5.7	14.4
Footwear	376.0	319.6	415.3	-56.3	95.7	-15.0	29.9
Electrical Part	44.9	40.0	55.2	-5.0	15.2	-11.1	38.0
Vehicle Part	25.4	29.6	26.8	4.2	-2.8	16.6	-9.3
Bicycle	175.2	137.8	122.1	-37.4	-15.7	-21.3	-11.4
Wood Products	41.9	30.5	42.2	-11.4	11.7	-27.2	38.5
Rice	155.5	150.2	184.7	-5.2	34.4	-3.4	22.9
Rubber	66.8	54.3	54.4	-12.5	0.0	-18.7	0.0
Fish and Other Agricultural Products	21.6	33.9	32.6	12.3	-1.3	57.2	-3.7
Others	518.7	425.9	597.7	-92.8	171.9	-17.9	40.4
Total Exports (fob)	4,324.6	3,954.1	4,656.9	-370.5	702.8	-8.6	17.8

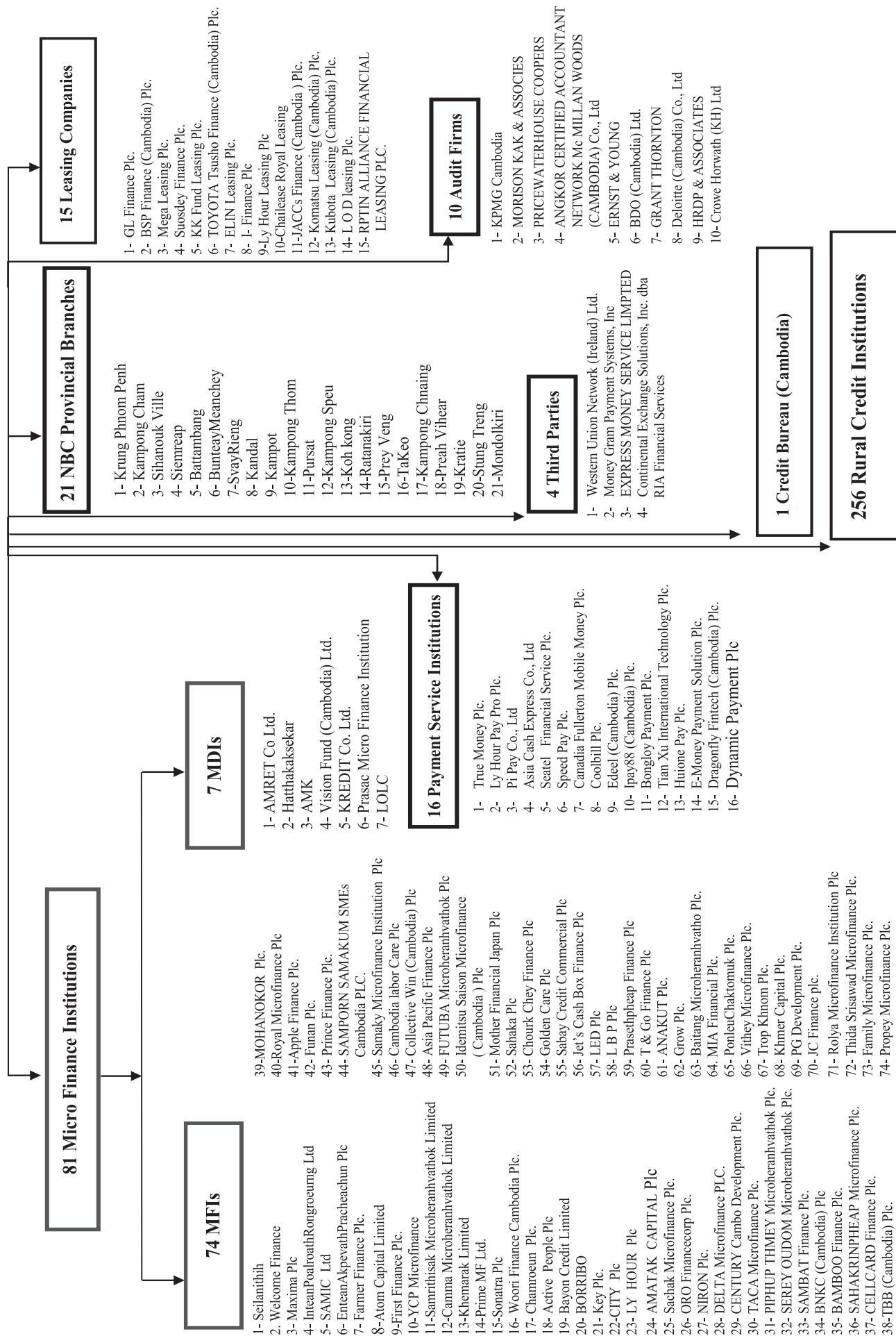
Source: General Department of Cambodia Customs and Excise

* Revised Data

** Including Individuals and Legal Entities

Table 24: THE BANKING SYSTEM IN CAMBODIA
At 30 March, 2019





អ៊ីនធឺណែត
INTERNET

: www.nbc.org.kh គឺជាគេហទំព័ររបស់ធនាគារជាតិនៃកម្ពុជា ។ ទិន្នន័យថ្មីៗក្នុងគេហទំព័រ និងទិន្នន័យបន្តបន្ទាប់ទៀត ត្រូវបាននិងកំពុងដាក់បញ្ចូលទៅក្នុងប្រព័ន្ធទិន្នន័យ តាមធនធាន ដែលមាន ។ លើសពីនេះទៀត គេហទំព័រនេះ គឺជាទីតាំងដ៏ល្អបំផុតដើម្បីទទួលបានទិន្នន័យសង្ខេប នៃការចេញផ្សាយចុងក្រោយបង្អស់ ។

www.nbc.org.kh is the National Bank of Cambodia website. The website new data and metadata are progressively being added to the database, as resources permit. This website is the best place to start for access to summary data from the latest publications.

សេវាព័ត៌មាន
INFORMATION SERVICE

: បុគ្គលិករបស់នាយកដ្ឋានស្ថិតិ នៃធនាគារជាតិនៃកម្ពុជា អាចជួយចង្អុលបង្ហាញ ឬណែនាំ អ្នកប្រើប្រាស់ក្នុងការស្វែងរកទិន្នន័យតាមតម្រូវការ ។ ការបោះពុម្ពផ្សាយរបស់ធនាគារជាតិនៃកម្ពុជា អាចរកជាវបាន ហើយសេវាលើការជាវជាប្រចាំក៏អាចរៀបចំបានដែរ ។ ចំពោះសេវាលើទិន្នន័យ ពិសេសផ្សេងទៀតក៏អាចរកបានផងដែរ តាមរយៈការមកជាវព្រឹត្តិបត្រដោយផ្ទាល់ ។

The Statistics Department staff of the National Bank of Cambodia can assist users in addressing their data requirements. The National Bank of Cambodia publications are available for sale and subscription services can be arranged. Other special data services are also available, on a user pays basis.

អាសយដ្ឋានទំនាក់ទំនង
CONTACT DETAILS

ធនាគារជាតិនៃកម្ពុជា
NATIONAL BANK OF CAMBODIA
នាយកដ្ឋានស្ថិតិ
Statistics Department
អគារលេខ ៦៩-៧០ មហាវិថីហានូយ (លេខ១០១៩) ភូមិបាយ៉ាប សង្កាត់ភ្នំពេញថ្មី
ខណ្ឌសែនសុខ រាជធានីភ្នំពេញ
#69-70, Hanoi Blvd. (1019), Phum Bayab, Sangkat Phnom Penh Thmei, Cambodia
អ៊ីម៉ែល : statistics@nbc.org.kh
E-mail : statistics@nbc.org.kh
ទូរស័ព្ទ : (៨៥៥) ២៣ ៧២២ ៥៦៣ – ១១១៥
Telephone: (855) 23 722 563 – 1115
ទូរសារ : (៨៥៥) ២៣ ៤២៦ ១១៧
Facsimile : (855) 23 426 117



ISSN 2074-5680

តម្លៃ : ១៥.០០០ រៀល (មួយម៉ឺនប្រាំពាន់រៀល)
Price: KHR 15,000 (Fifteen Thousand Riels)

ផលិតដោយ ធនាគារជាតិនៃកម្ពុជា
Produced by the National Bank of Cambodia