

ព្រះរាជាណាចក្រកម្ពុជា  
KINGDOM OF CAMBODIA  
ជាតិ សាសនា ព្រះមហាក្សត្រ  
NATION RELIGION KING



ធនាគារជាតិ នៃ កម្ពុជា  
NATIONAL BANK OF CAMBODIA

ព័ត៌មានស្ថិតិសេដ្ឋកិច្ច និងរូបិយវត្ថុ  
ECONOMIC AND MONETARY STATISTICS

លេខ ៣២១ – ឆ្នាំទី២៨  
ខែកក្កដា ឆ្នាំ២០២០  
SERIES No. 321–28th YEAR  
JULY 2020

# Contents

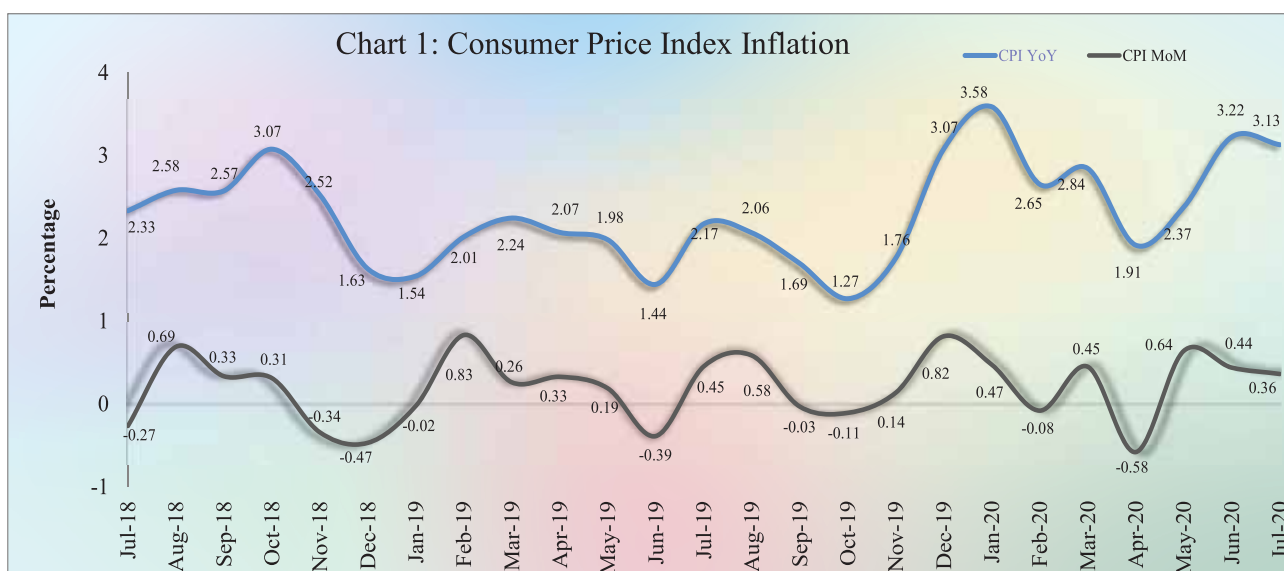
	Page
- Introduction.....	1
- Consumer Price Index.....	1
- Exchange Rate.....	1
- Money Supply.....	2
- Net Domestic Assets of the Depository Corporations.....	2
- Net Foreign Assets of the Depository Corporations.....	3
- Other Depository Corporations Survey.....	3
- Other Financial Corporations Survey.....	3
- Interest Rates on Loans and Deposits.....	4
- Foreign Tourist Arrivals.....	4
- International Trade in Goods.....	5
Table 1 : Consumer Price Index and Inflation Rate.....	6
Table 2 : Consumer Items Showing Price Increased in July 2020.....	7
Chart 1 : Consumer Price Index.....	8
Chart 2 : Weight of All Group Indices in Consumer Basket.....	8
Table 3 : Gross Domestic Product.....	9
Chart 3 : GDP by Economic Activity (At Constant 2000 Prices).....	9
Chart 4 : GDP by Economic Activity (At Current Prices).....	9
Table 4 : Approved Investment Projects by Sectors.....	10
Chart 5 : Investment Fixed Assets by Sectors.....	10
Chart 6 : Numbers of Investment Projects by Sectors.....	10
Table 5 : Approved Investment Projects by Major Countries.....	11
Table 6 : Daily Exchange Rate in July 2020 (KHR/USD).....	12
Table 7 : Monthly Exchange Rate (KHR/USD, End-Period).....	13
Chart 7 : Trend of Monthly Exchange Rate.....	13
Table 8 : The Value of KHR Against Other Currencies (Official Buying Rates, End-Period).....	14
Table 9 : Deposit Money Bank's Interest Rates on Deposits and Loans in KHR.....	15
Table 10: Central Bank Survey.....	16
Table 11: Other Depository Corporations Survey.....	17
Table 12: Depository Corporations Survey.....	18
Table 13: Other Financial Corporations Survey.....	19
Table 14: Financial Corporations Survey.....	20
Chart 8 : Financial Corporations Survey.....	21
Chart 9 : Monetary Aggregates Components.....	21
Table 15: Credit Granted by Deposit Money Banks Classified by Industry.....	22
Chart 10: Credit Granted by Deposit Money Banks Classified by Industry.....	22
Table 16: Monthly Change of Credit Granted by Deposit Money Banks Classified by Industry.....	23
Table 17: Deposits with Deposit Money Banks.....	24
Chart 11: Deposits with Deposit Money Banks Classified by Currency, as of July 2020 (% of Total Deposits).....	24
Table 18: Monthly Change of Deposits with Deposit Money Banks.....	25
Chart 12: Deposits in KHR Classified by Type, as of July 2020 (% of Total KHR Deposits).....	26
Chart 13: Deposits in Foreign Currency Classified by Type, as of July 2020 (% of Total FCD).....	26
Table 19: Credit Granted by Micro-Finance Institutions and Non-Government Organizations.....	27
Table 20: KHR-Denominated Checks Clearing Through Clearing House.....	28
Table 21: USD-Denominated Checks Clearing Through Clearing House.....	29
Table 22: Visitor Arrivals in Cambodia.....	30
Table 23: Cambodia's Imports and Exports.....	31
Table 24: The Banking System in Cambodia.....	32-33

## Introduction

Overall consumer price inflation in July 2020 decelerated over the previous month; while the Khmer Riel (KHR) continued to appreciate against US dollar. During this period, financial intermediation of the banking sector which reflected by credit to private sectors and resident's deposit continued to improve. In the meantime, international trade in goods showed an increase in surplus.

## Consumer Price Index

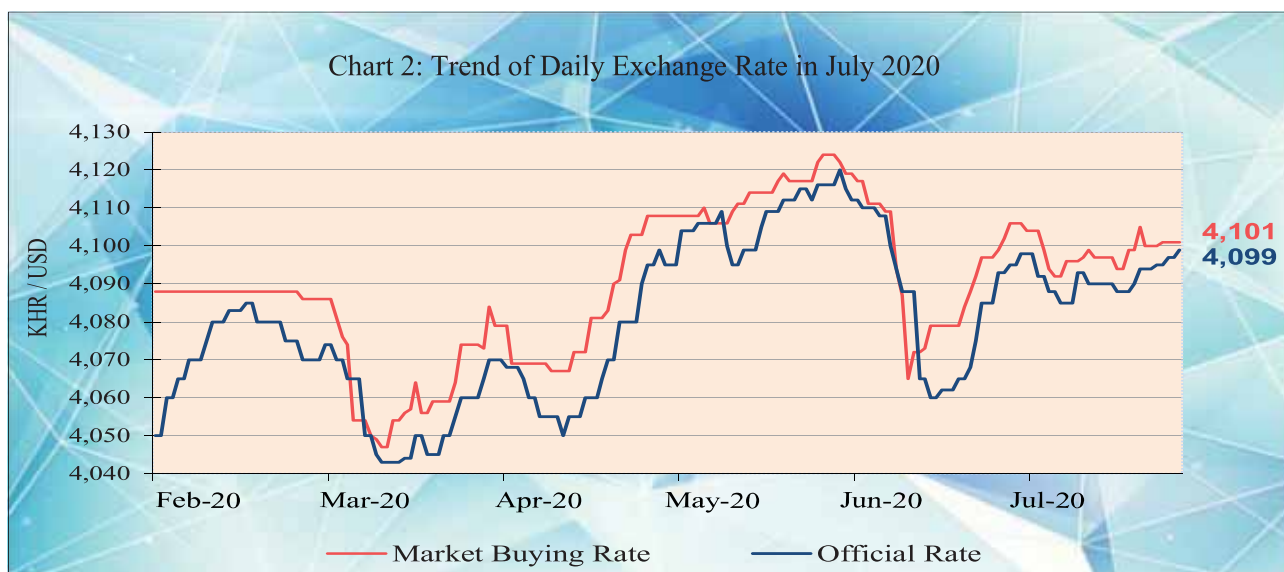
The consumer price inflation in Phnom Penh (month-on-month) eased to 0.36% in July 2020 from 0.44% in June, in which four out of twelve group indexes decreased while eight group indexes increased.



During the same period, the year-on-year percentage change of the CPI for all items eased to 3.13% in July 2020 from 3.22% in June mainly due to the decrease in food price.

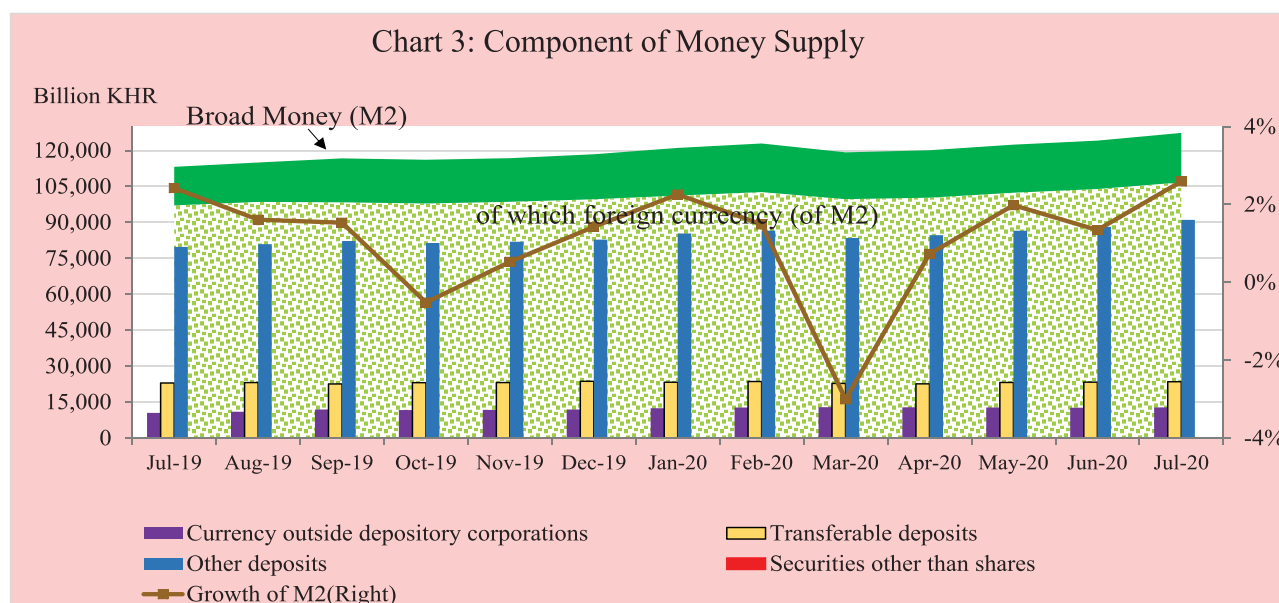
## Exchange Rate

The exchange rate (market buying rate) was KHR 4,101 per USD in July 2020, appreciated slightly by 0.02% over June.



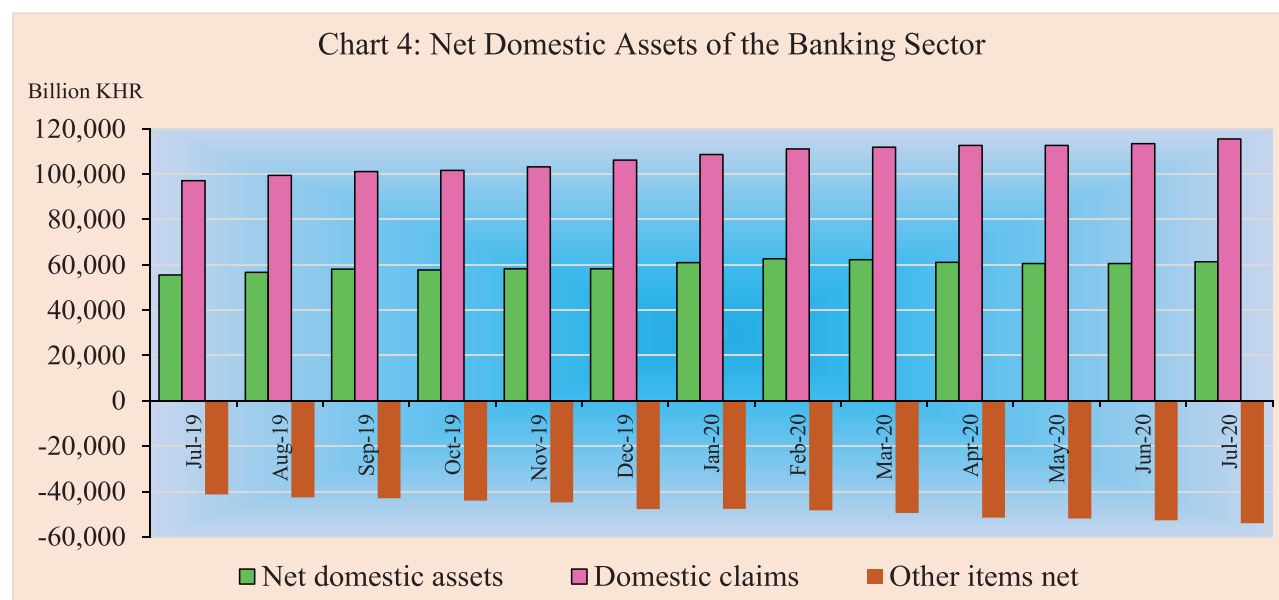
## Money Supply

Broad money (M2) surged to KHR 127,331.5 billion in July 2020, up by 2.6% compared to June. Main components of M2 showed that other deposits, currency outside depository corporations, and transferable deposits increased by 3.3%, 1.2%, and 0.6%, respectively.



## Net Domestic Assets of the Depository Corporations

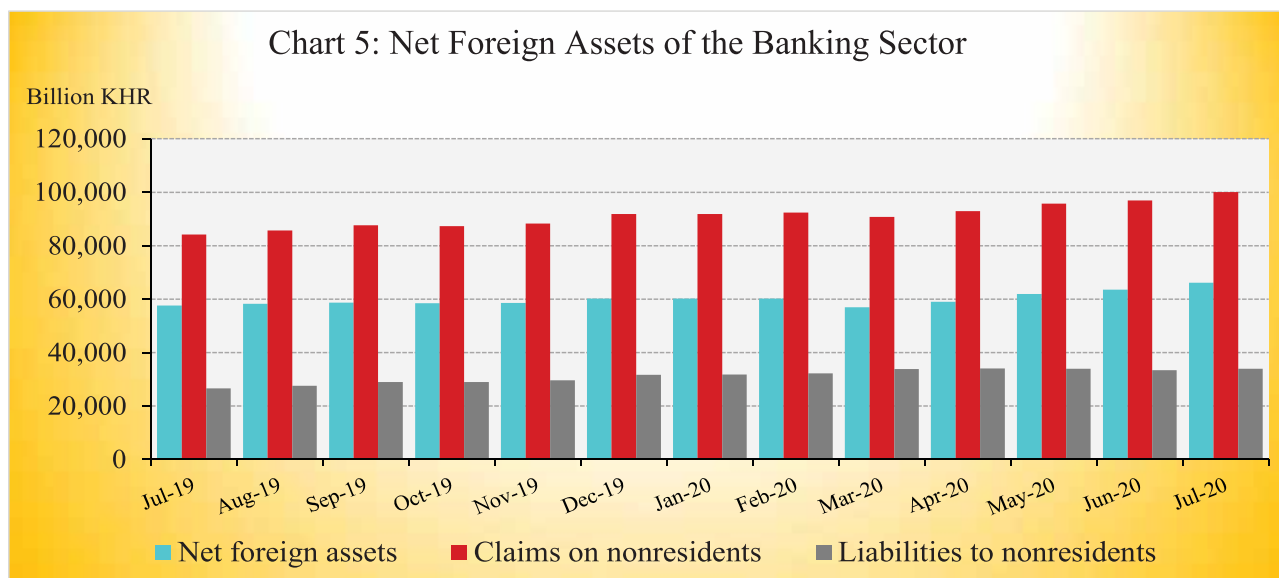
Net domestic assets of the depository corporations increased to KHR 61,246.7 billion in July 2020, up by 1.1% compared to June. This was due to an increase of 1.7% in net domestic credit while other items net decreased by 2.5%.



The increase in domestic credit was mainly due to the increases of 27.5%, 1.4%, and 1.3% in net credit to nonfinancial public sector, net credit to central government, and credit to private sector respectively, whereas net credit to other financial corporations decreased by 1.8%. The decrease in other items net was mainly due to an increase of 4% in capital while others increased by 8.2%.

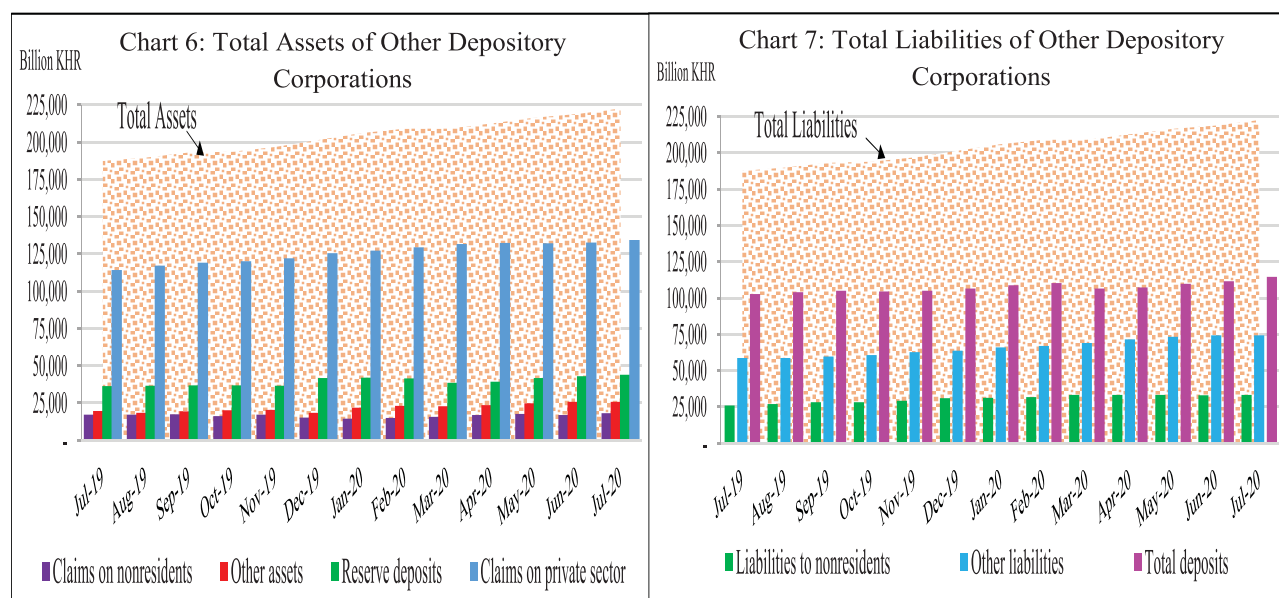
## Net Foreign Assets of the Depository Corporations

Net foreign assets of the depository corporation increased to KHR 66,084.8 billion in July 2020, up by 4% from June. This was due to the increases of 7.8% and 2.3% in other foreign assets and gross reserve while foreign liabilities increased only by 1.7%.



## Other Depository Corporations Survey

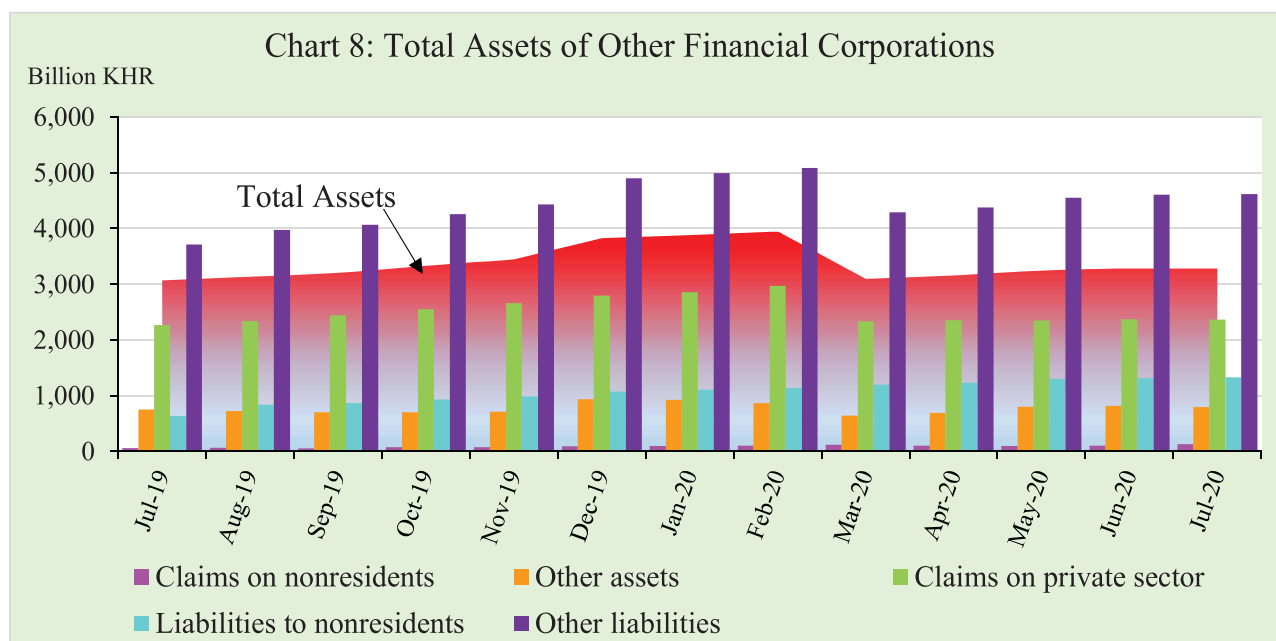
Total assets of other depository corporations (included commercial banks and microfinance deposit-taking institutions) were KHR 222,502.1 billion, increased by 1.6% in July 2020 compared to the previous month.



## Other Financial Corporations Survey

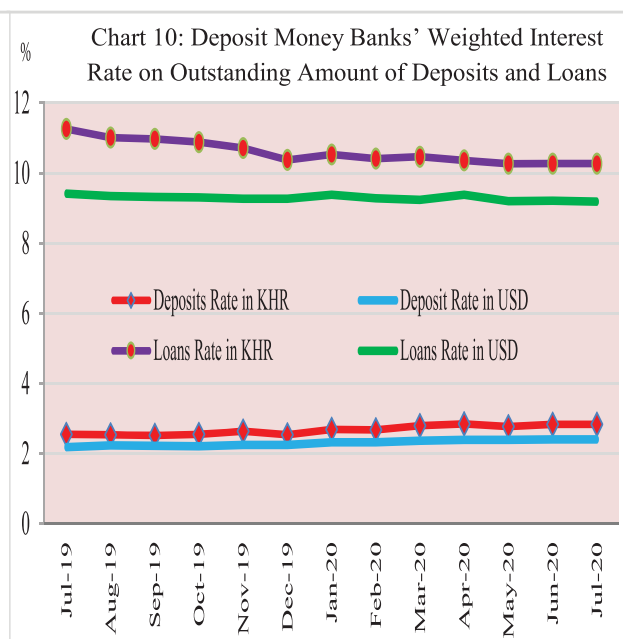
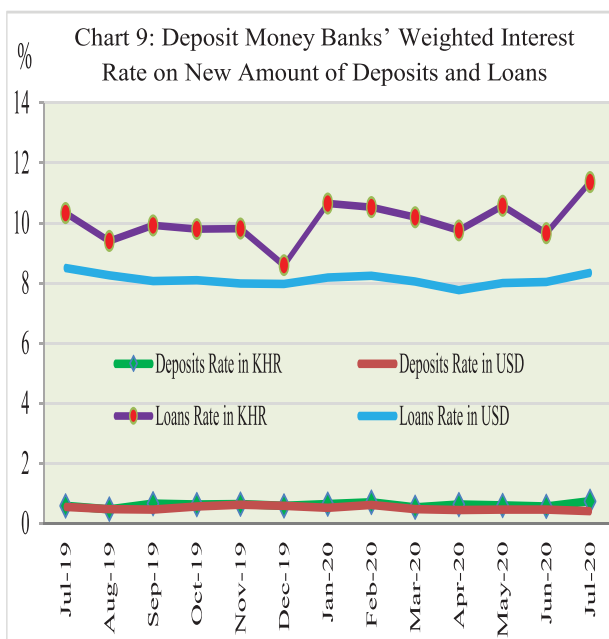
Total assets of other financial corporations were KHR 3,285 billion, down slightly by 0.1% in July 2020 compared to June.

Chart 8: Total Assets of Other Financial Corporations



### Interest Rates on Deposits and Loans

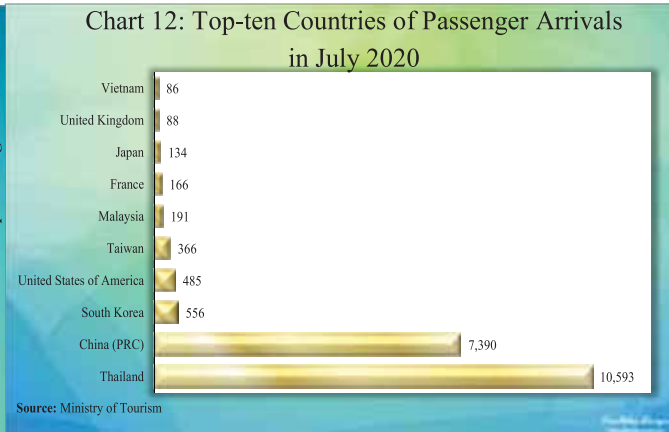
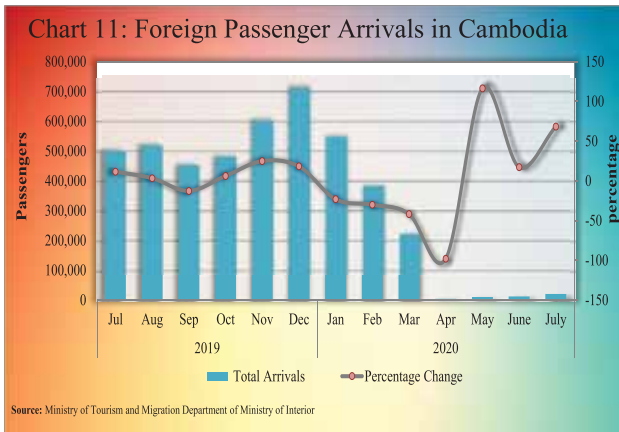
Interest rate on deposits and loans of banking sector in July 2020 showed that the (new amount) weighted average interest rate on deposit in KHR increased by 0.17% to 0.74% while deposit in USD decreased by 0.05% to 0.41%. At the same time, the weighted average interest rate on loan in KHR increased by 1.7% to 11.36% and loan in USD increased by 0.29% to 8.33%.



### Foreign Tourist Arrivals

In July 2020, total number of passenger arrivals was 20,689 increased by 68.4% followed the increasing of 17.3% in the preceding month. The main purpose of the passenger arrivals in Cambodia was for vacation, and business and professional accounted for 52.7% and 45.1%, respectively of the total.

Most of the foreign passengers were from Thailand, China P.R.C., South Korea, United States of America, Taiwan, Malaysia, France, Japan, United Kingdom, and Vietnam.

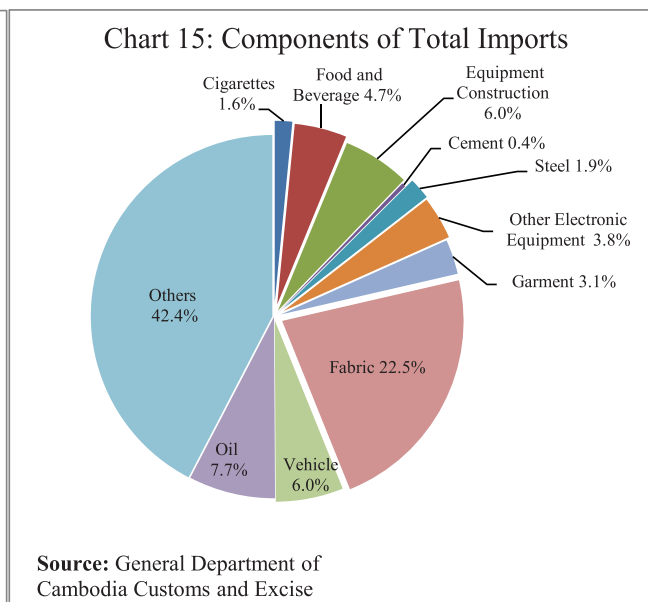
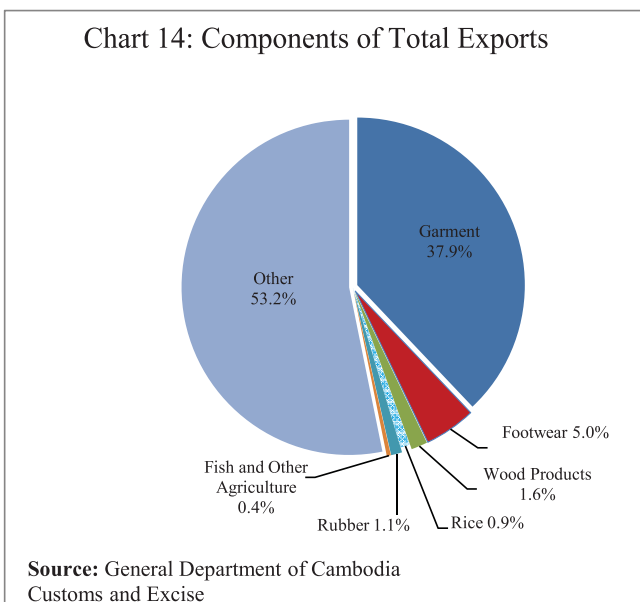


## International Trade in Goods

International trade in goods showed a surplus of KHR 3,287.5 billion (58.2%) in July 2020, followed the surplus of KHR 1,966.3 billion (35.7%) in June.



The major components of total exports were Garment, Electrical Part, Other Textile Product, Footwear, Bicycle, Wood Products, Rubber, Rice, Vehicle and Bicycle Part, and Fish and other agricultural Products. And the major components of total imports were Fabric, Oil, Vehicle, Equipment Construction, Food and Beverage, Other Electronic Equipment, Garment, Steel, Cigarette, Medicine, Fertilizer, and Cement.



**Table 1: Consumer Price Index and Inflation Rate**

<b>1. Consumer Price Index (CPI) and Component Indices</b> (Oct-Dec. 2006 = 100)	<b>Mar-20</b>	<b>Apr-20</b>	<b>May-20</b>	<b>Jun-20</b>	<b>Jul-20</b>
<b>CPI (all items)</b>	<b>181.46</b>	<b>180.41</b>	<b>181.56</b>	<b>182.36</b>	<b>183.01</b>
Food and Non-Alcoholic Beverages	222.94	224.72	225.99	226.78	226.75
Alcoholic Beverages, Tobacco and Narcotics	174.53	174.74	174.18	174.35	174.43
Clothing and Footwear	153.97	154.11	154.91	155.36	155.75
Housing, Water, Electricity, Gas and other Fuels	128.89	128.10	128.42	128.41	129.20
Furnishings and Household Maintenance	153.41	153.94	154.08	154.27	153.17
Health	137.69	137.21	137.21	137.23	137.05
Transport	113.82	100.40	102.64	105.39	108.45
Communication	67.02	66.94	66.60	66.66	66.84
Recreation and Culture	120.21	119.74	119.81	119.80	119.64
Education	164.57	164.57	165.15	164.91	165.48
Restaurants	294.67	293.27	296.98	298.04	300.87
Miscellaneous Goods and Services	150.68	151.91	152.46	153.45	154.12
<b>2. Percentage Change in the CPI and its Components</b>					
<b>2.1 Month on Month Change (%)</b>					
<b>CPI (all items)</b>	<b>0.45</b>	<b>-0.58</b>	<b>0.64</b>	<b>0.44</b>	<b>0.36</b>
Food and Non-Alcoholic Beverages	0.86	0.80	0.57	0.35	-0.01
Alcoholic Beverages, Tobacco and Narcotics	0.22	0.12	-0.32	0.10	0.04
Clothing and Footwear	0.57	0.09	0.52	0.29	0.25
Housing, Water, Electricity, Gas and other Fuels	0.41	-0.62	0.25	-0.01	0.62
Furnishings and Household Maintenance	0.20	0.34	0.09	0.12	-0.71
Health	0.29	-0.35	0.00	0.01	-0.13
Transport	-0.80	-11.80	2.23	2.68	2.90
Communication	-0.04	-0.12	-0.50	0.08	0.27
Recreation and Culture	0.38	-0.39	0.06	-0.01	-0.13
Education	0.43	0.00	0.35	-0.14	0.35
Restaurants	-0.59	-0.47	1.26	0.36	0.95
Miscellaneous Goods and Services	0.09	0.81	0.36	0.65	0.44
<b>2.2 Year on Year Change (%)</b>					
<b>CPI (all items)</b>	<b>2.84</b>	<b>1.91</b>	<b>2.37</b>	<b>3.22</b>	<b>3.13</b>
Food and Non-Alcoholic Beverages	4.18	4.36	4.63	5.65	4.98
Alcoholic Beverages, Tobacco and Narcotics	2.28	2.47	2.09	2.02	1.87
Clothing and Footwear	1.87	1.75	2.85	3.37	2.65
Housing, Water, Electricity, Gas and other Fuels	0.76	0.09	0.28	0.83	1.19
Furnishings and Household Maintenance	0.39	0.58	1.37	1.56	0.60
Health	0.48	0.10	0.16	0.15	0.11
Transport	0.13	-12.95	-11.45	-7.98	-5.36
Communication	-0.55	-0.51	-1.37	-0.09	0.11
Recreation and Culture	1.37	0.91	0.95	0.47	0.13
Education	3.18	3.18	3.54	3.39	3.75
Restaurants	2.49	3.57	4.88	4.04	4.77
Miscellaneous Goods and Services	3.14	3.84	4.18	4.50	4.18
<b>3. Three-month moving average CPI (All Items)</b>					
<b>Year on Year Change (%)</b>	<b>180.97</b>	<b>180.84</b>	<b>181.15</b>	<b>181.44</b>	<b>182.31</b>
	3.02	2.47	2.38	2.50	2.91
<b>4. Twelve-month moving average CPI (All Items)</b>					
<b>Year on Year Change (%)</b>	<b>178.76</b>	<b>179.04</b>	<b>179.39</b>	<b>179.86</b>	<b>180.33</b>
	2.22	2.20	2.24	2.38	2.46

*Source: National Institute of Statistics*

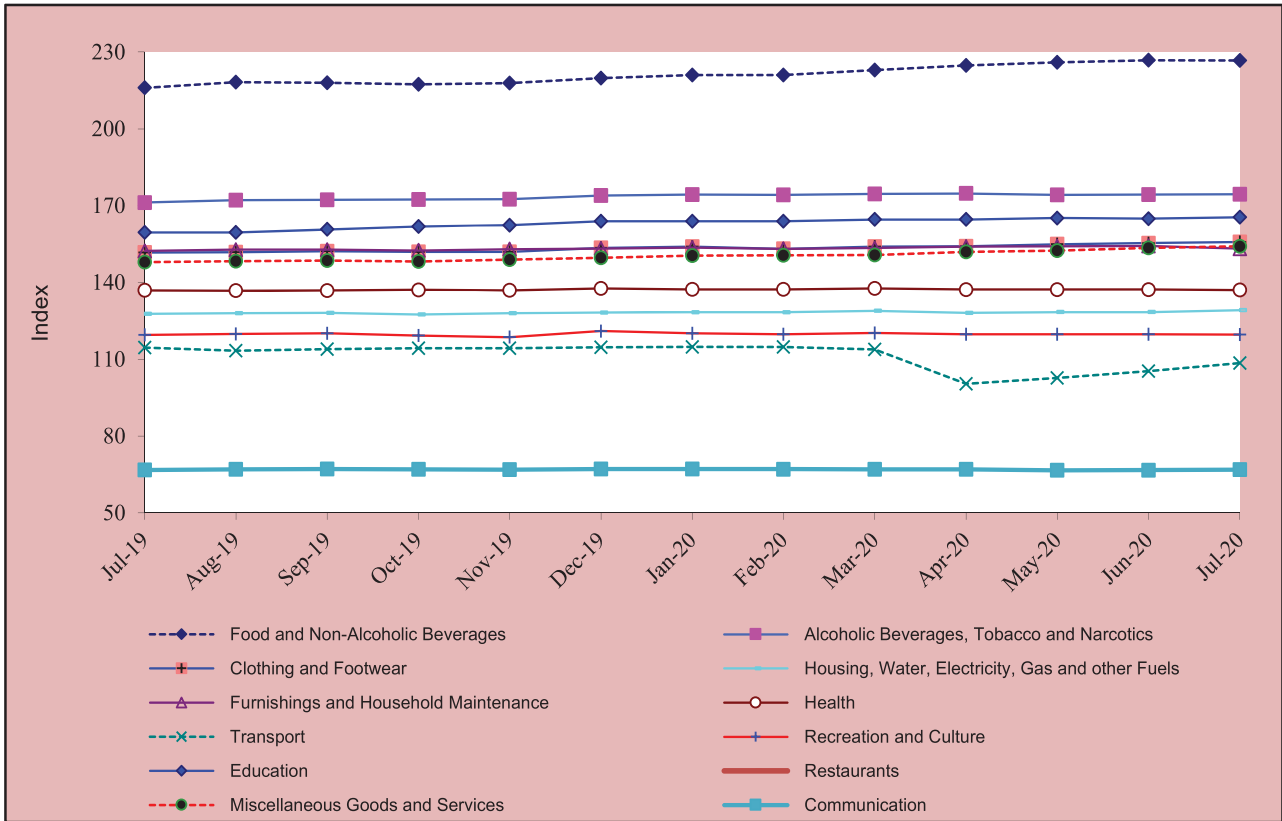


**Table 2: Consumer Items Showing Price Increased in July 2020**

No.	Description	Weight	Index			Percentage Change	
			Jul-19	Jun-20	Jul-20	Monthly	Yearly
1	GASOLINE	4.969	89.84	68.00	75.22	10.6	-16.3
2	DIESEL	0.144	109.93	77.64	83.16	7.1	-24.4
3	SERVICES FOR THE MAINTENANCE AND REPAIR OF THE DWELLING	0.435	188.91	197.60	204.36	3.4	8.2
4	GAS	2.699	123.23	119.46	123.50	3.4	0.2
5	DUCK (FRESH)	0.319	197.33	200.00	206.41	3.2	4.6
6	GLASSWARE, TABLEWARE AND HOUSEHOLD UTENSILS	0.078	140.47	142.72	146.91	2.9	4.6
7	LIQUID FUELS	0.099	146.96	141.20	143.61	1.7	-2.3
8	PORK (FRESH)	5.618	203.92	226.20	228.85	1.2	12.2
9	CLOTHING MATERIALS	0.334	164.50	170.86	172.72	1.1	5.0
10	HAIRDRESSING SALONS AND PERSONAL GROOMING ESTABLISHMENTS	0.081	175.96	176.06	177.94	1.1	1.1
11	RESTAURANTS AND HOTELS	5.861	287.18	298.04	300.87	1.0	4.8
12	MAINTENANCE AND REPAIRS OF PERSONAL TRANSPORT EQUIPMENT	0.265	257.18	274.12	276.24	0.8	7.4
13	TRANSPORT SERVICES	0.812	174.82	165.84	167.07	0.7	-4.4
14	LOCALLY PROCESSED MEAT	0.276	248.06	261.23	263.05	0.7	6.0
15	TELEPHONE AND TELEFAX EQUIPMENT	0.725	47.68	47.52	47.80	0.6	0.2
16	PERSONAL EFFECTS N.E.C	0.876	177.21	190.32	191.30	0.5	8.0
17	OTHER SERVICES N.E.C.	0.892	118.74	117.61	118.17	0.5	-0.5
18	BICYCLES	0.103	142.77	144.98	145.66	0.5	2.0
19	DRIED NUTS AND EDIBLE SEEDS	0.556	245.20	246.08	247.14	0.4	0.8
20	BEEF (FRESH)	2.165	249.89	259.49	260.58	0.4	4.3
21	SEAFOOD (FRESH, CHILLED OR FROZEN)	0.229	245.14	246.40	247.35	0.4	0.9
22	OUTPATIENT SERVICES	1.141	122.94	122.94	123.41	0.4	0.4
23	OTHER GRAINS	0.090	304.17	313.91	315.04	0.4	3.6
24	PROCESSED FISH AND SEAFOOD	1.646	249.10	266.48	267.41	0.4	7.4
25	EDUCATION	1.174	159.50	164.91	165.48	0.3	3.8
26	CLOTHING FOR MEN AND BOYS	0.621	147.09	151.00	151.51	0.3	3.0
27	RICE, QUALITY NO.2 WHITE, NEANG-MENH, BATTAMBANG	2.681	233.73	243.27	244.06	0.3	4.4
28	BEER	0.532	127.20	129.21	129.59	0.3	1.9
29	FISH (FRESH)	7.435	224.71	241.97	242.56	0.2	7.9
30	TOOLS AND EQUIPMENT FOR HOUSE AND GARDEN	0.017	188.66	192.75	193.20	0.2	2.4
31	MOTOR CARS	3.053	107.75	107.89	108.13	0.2	0.4
32	OTHER CLOTHING (BOTH SEXES)	0.222	125.19	129.56	129.84	0.2	3.7
33	HOUSEHOLD APPLIANCES	0.397	118.01	119.89	120.11	0.2	1.8
34	HOUSEHOLD TEXTILES	0.015	174.09	177.65	177.96	0.2	2.2
35	CLOTHING FOR WOMEN AND GIRLS	1.065	148.86	152.72	152.99	0.2	2.8
36	RICE, QUALITY NO.1 WHITE, PHAKA KANHEY, BATTAMBANG	3.052	232.20	238.24	238.59	0.1	2.8
37	GLUTINOUS RICE, QUALITY NO.1, WHITE, KHMER	0.429	140.14	143.49	143.69	0.1	2.5
38	COFFEE, TEA AND COCOA	0.755	140.85	142.25	142.38	0.1	1.1
39	MATERIALS FOR THE MAINTENANCE AND REPAIR OF THE DWELLING	3.663	146.14	148.42	148.55	0.1	1.6
40	INFANTS' CLOTHING (BELOW 1 YEAR)	0.054	144.41	143.05	143.15	0.1	-0.9

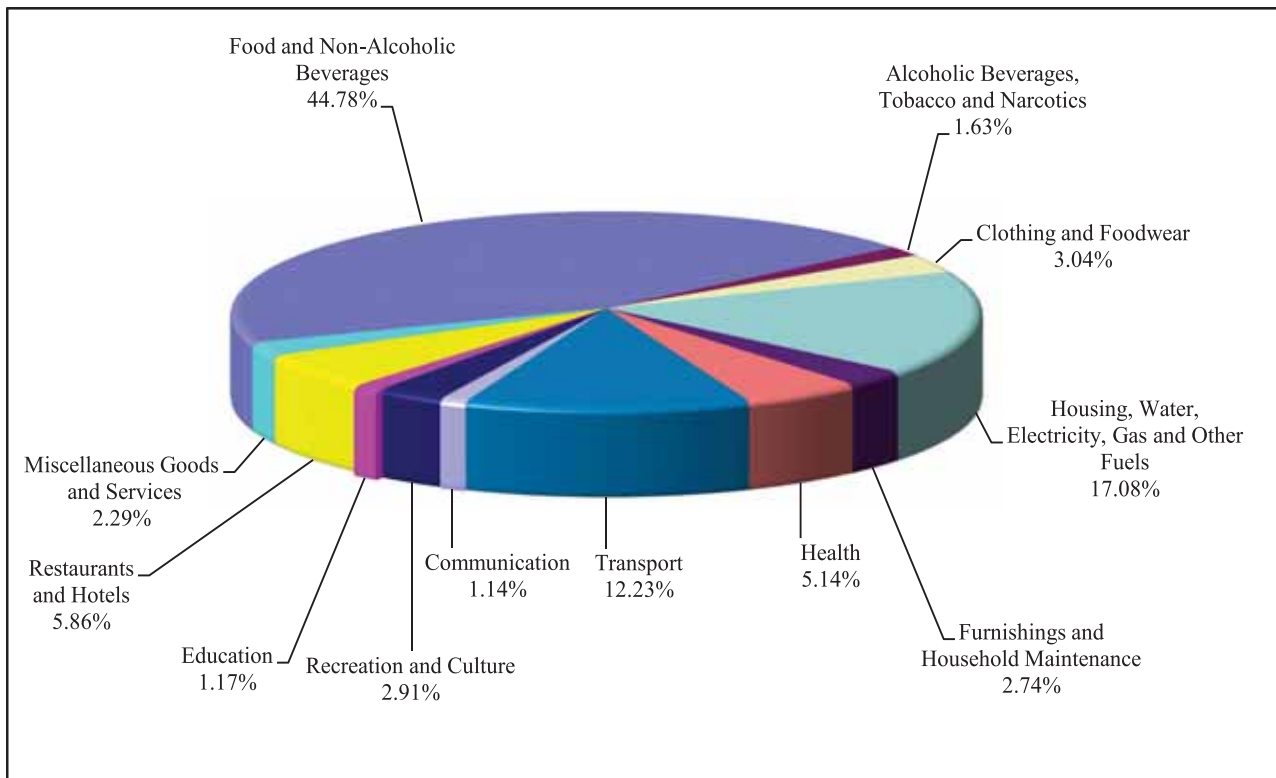
Source: National Institute of Statistics

**Chart 1: Consumer Price Index**



Source: National Institute of Statistics

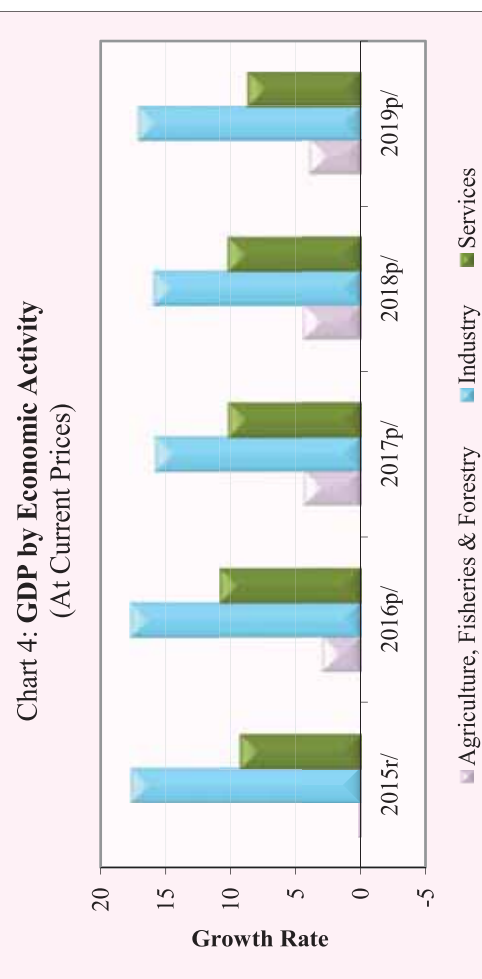
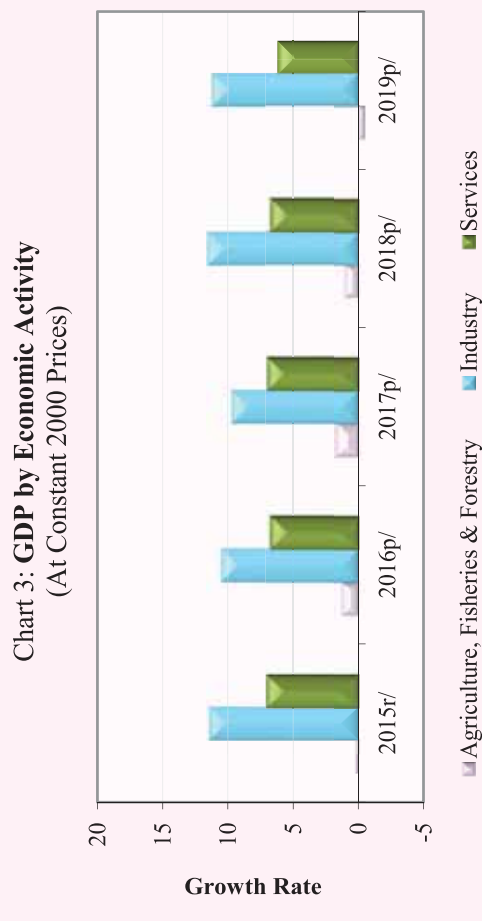
**Chart 2: Weight of All Group Indices in Consumer Basket**



Source: National Institute of Statistics

**Table 3: Gross Domestic Product (GDP)**

	At Constant 2000 Prices					At Current Prices				
	2015r/	2016p/	2017p/	2018p/	2019p/	2015r/	2016p/	2017p/	2018p/	2019p/
GDP in Billion KHR	42,981	45,961	49,177	52,850	56,578	73,423	81,242	89,831	99,544	110,014
GDP in Million USD	10,679	11,405	12,148	13,001	13,901	18,242	20,159	22,191	24,488	27,030
GDP % Growth Rate	7.0	6.9	7.0	7.5	7.1	8.9	10.6	10.6	10.8	10.5
GDP % Growth Rate, by Economic Activity										
<b>Agriculture, Fisheries &amp; Forestry</b>	<b>0.2</b>	<b>1.3</b>	<b>1.7</b>	<b>1.1</b>	<b>-0.5</b>	<b>0.2</b>	<b>3.0</b>	<b>4.4</b>	<b>4.4</b>	<b>4.0</b>
<b>Industry</b>	<b>11.5</b>	<b>10.6</b>	<b>9.7</b>	<b>11.6</b>	<b>11.3</b>	<b>17.7</b>	<b>17.7</b>	<b>15.8</b>	<b>16.0</b>	<b>17.1</b>
<b>Services</b>	<b>7.1</b>	<b>6.8</b>	<b>7.0</b>	<b>6.8</b>	<b>6.2</b>	<b>9.2</b>	<b>10.8</b>	<b>10.1</b>	<b>10.2</b>	<b>8.7</b>
GDP Per Capita in Million KHR	2.9	3.0	3.2	3.4	3.5	4.9	5.4	5.8	6.3	6.9
GDP Per Capita in USD	713	752	782	826	871	1,218	1,330	1,429	1,555	1,694



p/: preliminary estimates

r/: revised

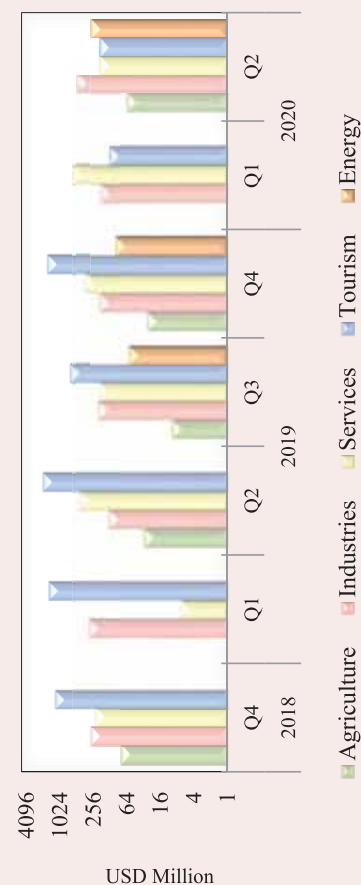
Source: National Institute of Statistics

**Table 4: Investment Projects Approved by Sectors**

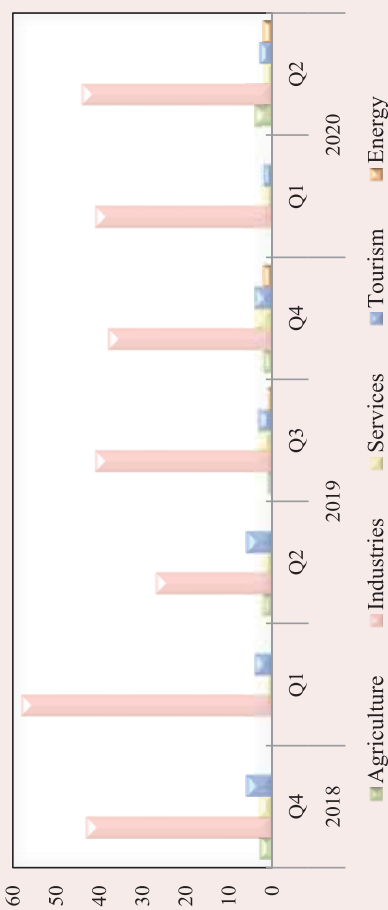
(In Million USD)

Sector	Agriculture		Industries		Services		Tourism		Energy		Total	
	Projects	Fixed Assets	Projects	Fixed Assets	Projects	Fixed Assets	Projects	Fixed Assets	Projects	Fixed Assets	Projects	Fixed Assets
<b>2017</b>												
<b>Total</b>	<b>7</b>	<b>274.5</b>	<b>97</b>	<b>726.3</b>	<b>4</b>	<b>1,049.5</b>	<b>3</b>	<b>3,166.6</b>	-	-	<b>111</b>	<b>5,216.9</b>
<b>2018</b>												
<b>Q3</b>	1	32.0	25	408.2	2	550.4	2	137.3	-	-	30	1,127.9
<b>Q4</b>	3	79.5	43	293.2	3	240.4	6	1,239.4	-	-	55	1,852.5
<b>Total</b>	<b>13</b>	<b>444.2</b>	<b>115</b>	<b>984.0</b>	<b>10</b>	<b>2,869.9</b>	<b>12</b>	<b>1,577.8</b>	-	-	<b>150</b>	<b>5,875.8</b>
<b>2019</b>												
<b>Q1</b>	-	-	58	310.1	1	6.8	4	1,618.8	-	-	63	1,935.6
<b>Q2</b>	2	31.2	27	137.5	2	460.9	6	2,057.3	-	-	37	2,686.9
<b>Q3</b>	1	10.0	41	213.4	3	199.2	3	671.8	1	58.2	49	1,152.5
<b>Q4</b>	2	27.5	38	198.5	4	361.4	4	1,703.7	2	100.4	50	2,391.6
<b>Total</b>	<b>5</b>	<b>68.7</b>	<b>164</b>	<b>859.4</b>	<b>10</b>	<b>1028.3</b>	<b>17</b>	<b>6,051.6</b>	<b>3</b>	<b>158.6</b>	<b>199</b>	<b>8,166.6</b>
<b>2020</b>												
<b>Q1</b>	-	-	41	191.0	2	592.1	2	133.0	-	-	45	916.1
<b>Q2</b>	4	62.5	44	509.0	2	198.1	3	202.4	2	282.1	55	1,254.1
<b>Total</b>	<b>4</b>	<b>62.5</b>	<b>85</b>	<b>700.0</b>	<b>4</b>	<b>790.2</b>	<b>5</b>	<b>335.4</b>	<b>2</b>	<b>282.1</b>	<b>100</b>	<b>2,170.1</b>

**Chart 5: Investment Fixed Assets by Sectors**



**Chart 6: Number of Investment Projects by Sectors**



Source: Council for the Development of Cambodia (Cambodian Investment Board)

**Table 5: Investment Projects Approved by Major Countries\***

(In Million USD)

Country	2018		2019				2020	
	Q3	Q4	Q1	Q2	Q3	Q4	Q1	Q2
Cambodia	838.1	729.5	1,050.4	2,491.7	331.8	788.4	332.3	430.2
China	205.8	227.8	279.9	99.3	275.4	666.8	471.9	343.2
Korea	3.6	2.1	19.1	-	6.0	-	-	231.1
United States	-	-	-	5.3	4.9	-	18.6	14.8
Thailand	13.1	6.8	6.8	2.2	7.8	-	-	5.0
Vietnam	-	21.4	-	-	2.9	-	2.3	5.9
Malaysia	-	-	4.5	-	-	-	30.0	21.7
Singapore	-	6.5	10.3	-	2.9	-	-	45.2
Taiwan	8.7	12.9	24.6	27.3	5.8	-	20.8	27.1
Australia	-	-	-	-	-	-	-	-
England	-	10.3	502.7	3.1	292.3	23.4	-	2.0
Japan	-	822.6	-	2.3	-	292.4	7.2	-
Hong Kong	33.1	5.9	24.6	55.7	222.9	613.3	32.2	23.7
Others	25.3	6.7	12.7	0.0	0.0	7.3	0.8	104.0
<b>Total</b>	<b>1,127.9</b>	<b>1,852.5</b>	<b>1,935.6</b>	<b>2,686.9</b>	<b>1,152.5</b>	<b>2,391.6</b>	<b>916.1</b>	<b>1,254.1</b>
	<b>(Share of Total)</b>							
Cambodia	74.3	39.4	54.3	92.7	28.8	33.0	36.3	34.3
China	18.2	12.3	14.5	3.7	23.9	27.9	51.5	27.4
Korea	0.3	0.1	1.0	-	0.5	-	-	18.4
United States	-	-	-	0.2	0.4	-	2.0	1.2
Thailand	1.2	0.4	0.4	0.1	0.7	-	-	0.4
Vietnam	-	1.2	-	-	0.3	-	0.3	0.5
Malaysia	-	-	0.2	-	-	-	3.3	1.7
Singapore	-	0.3	0.5	-	0.2	-	-	3.6
Taiwan	0.8	0.7	1.3	1.0	0.5	-	2.3	2.2
Australia	-	-	-	-	-	-	-	-
England	-	0.6	26.0	0.1	25.4	1.0	-	0.2
Japan	-	44.4	-	0.1	-	12.2	0.8	-
Hong Kong	2.9	0.3	1.3	2.1	19.3	25.6	3.5	1.9
Others	2.2	0.4	0.7	0.0	0.0	0.3	0.1	8.3
<b>Total</b>	<b>100.0</b>	<b>100.0</b>	<b>100.0</b>	<b>100.0</b>	<b>100.0</b>	<b>100.0</b>	<b>100.0</b>	<b>100.0</b>

\* Fixed Assets

Source: Council for the Development of Cambodia (Cambodian Investment Board)

**Table 6: Daily Exchange Rate in July 2020**

(KHR/USD)

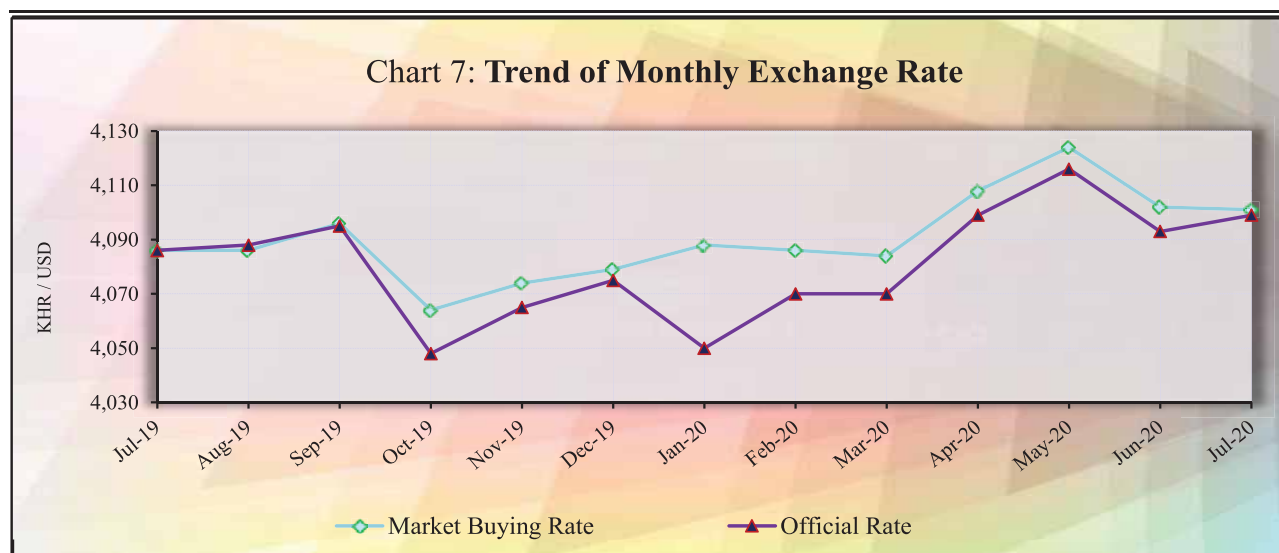
Day	Parallel Market Rate			Official Rate	Daily Change*	
	Purchase	Sale	Midpoint		Spread	% Change
1	4,106	4,113	4,110	4,095	4.0	0.1
2	4,106	4,113	4,110	4,095	0.0	0.0
3	4,106	4,113	4,110	4,098	0.0	0.0
4	4,104	4,111	4,108	4,098	-2.0	0.0
5	4,104	4,111	4,108	4,098	0.0	0.0
6	4,104	4,111	4,108	4,092	0.0	0.0
7	4,099	4,108	4,104	4,092	-5.0	-0.1
8	4,094	4,101	4,098	4,088	-5.0	-0.1
9	4,092	4,101	4,097	4,088	-2.0	0.0
10	4,092	4,101	4,097	4,085	0.0	0.0
11	4,096	4,103	4,100	4,085	4.0	0.1
12	4,096	4,103	4,100	4,085	0.0	0.0
13	4,096	4,103	4,100	4,093	0.0	0.0
14	4,097	4,106	4,102	4,093	1.0	0.0
15	4,099	4,108	4,104	4,090	2.0	0.0
16	4,097	4,106	4,102	4,090	-2.0	0.0
17	4,097	4,106	4,102	4,090	0.0	0.0
18	4,097	4,106	4,102	4,090	0.0	0.0
19	4,097	4,106	4,102	4,090	0.0	0.0
20	4,094	4,103	4,099	4,088	-3.0	-0.1
21	4,094	4,103	4,099	4,088	0.0	0.0
22	4,099	4,107	4,103	4,088	5.0	0.1
23	4,099	4,107	4,103	4,090	0.0	0.0
24	4,105	4,113	4,109	4,094	6.0	0.1
25	4,100	4,108	4,104	4,094	-5.0	-0.1
26	4,100	4,108	4,104	4,094	0.0	0.0
27	4,100	4,108	4,104	4,095	0.0	0.0
28	4,101	4,110	4,106	4,095	1.0	0.0
29	4,101	4,110	4,106	4,097	0.0	0.0
30	4,101	4,110	4,106	4,097	0.0	0.0
31	4,101	4,110	4,106	4,099	0.0	0.0
<b>Average Rate</b>	<b>4,099</b>	<b>4,107</b>	<b>4,103</b>	<b>4,092</b>	<b>0.0</b>	<b>0.0</b>

\* Spread of Daily Purchasing Market Rate

### Table 7: Monthly Exchange Rate

(KHR/USD, End-Period)

Month	Market Rate				Official Rate
	Purchase	Monthly %Change	Sale	Midpoint	
<b>Dec-15</b>	4,048	0.10	4,055	4,052	4,050
<b>Dec-16</b>	4,039	0.17	4,050	4,045	4,037
<b>Dec-17</b>	4,037	0.07	4,046	4,042	4,037
<b>2018</b>					
Nov	4,038	-0.49	4,050	4,044	4,031
Dec	4,027	-0.27	4,039	4,033	4,018
<b>2019</b>					
Jan	4,016	-0.27	4,025	4,021	4,011
Feb	4,007	-0.22	4,016	4,012	4,003
Mar	4,019	0.30	4,030	4,025	4,015
Apr	4,049	0.75	4,058	4,054	4,050
May	4,064	0.37	4,075	4,070	4,062
Jun	4,069	0.12	4,079	4,074	4,066
Jul	4,086	0.42	4,096	4,091	4,086
Aug	4,086	0.00	4,096	4,091	4,088
Sep	4,096	0.24	4,109	4,103	4,095
Oct	4,064	-0.78	4,076	4,070	4,048
Nov	4,074	0.25	4,084	4,079	4,065
Dec	4,079	0.12	4,089	4,084	4,075
<b>2020</b>					
Jan	4,088	0.22	4,100	4,094	4,050
Feb	4,086	-0.05	4,094	4,090	4,070
Mar	4,084	-0.05	4,095	4,090	4,070
Apr	4,108	0.59	4,117	4,113	4,099
May	4,124	0.39	4,135	4,130	4,116
Jun	4,102	-0.53	4,113	4,108	4,093
Jul	4,101	-0.02	4,110	4,106	4,099



**Table 8: The Value of KHR Against Other Currencies**

(Official Buying Rate, End-Period)

Unit	SDR	US Dollar		Euro		Japanese Yen		Pound Sterling		Indonesian Rupiah		Malaysian Ringgit		Philippines Peso		Singaporean Dollar		Thai Baht	
		1	1	1	1	100	1	1	1	1000	1	1	100	1	1	1	1	1	1
Dec-14	5,902	4,075	4,955	3,411	6,342	328	1,166												
Dec-15	5,617	4,050	4,429	3,362	6,000	294	944												
Dec-16	5,410	4,037	4,265	3,467	4,960	300	901												
Dec-17	5,735	4,037	4,821	3,574	5,426	298	994												
Dec-18	5,588	4,018	4,597	3,641	5,098	277	969												
<b>2019</b>																			
Jan	5,604	4,011	4,610	3,683	5,264	284	981												
Feb	5,595	4,003	4,555	3,610	5,331	285	984												
Mar	5,573	4,015	4,510	3,631	5,244	282	985												
Apr	5,595	4,050	4,515	3,629	5,233	285	981												
May	5,595	4,062	4,523	3,717	5,123	282	969												
Jun	5,652	4,066	4,624	3,776	5,154	288	982												
Jul	5,620	4,086	4,558	3,764	4,967	291	991												
Aug	5,600	4,088	4,520	3,840	4,981	287	969												
Sep	5,587	4,095	4,480	3,793	5,034	289	978												
Oct	5,573	4,048	4,516	3,720	5,224	289	969												
Nov	5,581	4,065	4,476	3,710	5,248	289	975												
Dec	5,635	4,075	4,565	3,743	5,344	293	994												
<b>2020</b>																			
Jan	5,572	4,050	4,466	3,718	5,301	297	991												
Feb	5,575	4,070	4,476	3,711	5,245	290	967												
Mar	5,578	4,070	4,490	3,768	5,037	249	942												
Apr	5,591	4,099	4,454	3,843	5,106	269	946												
May	5,621	4,116	4,558	3,824	5,068	280	947												
Jun	5,631	4,093	4,602	3,802	5,038	289	956												
Jul	5,768	4,099	4,867	3,919	5,377	282	967												
<b>Monthly % Change</b>	<b>2.43</b>	<b>0.15</b>	<b>5.76</b>	<b>3.08</b>	<b>6.73</b>	<b>-2.42</b>	<b>1.15</b>	<b>1.60</b>	<b>1.77</b>	<b>1.50</b>	<b>1.77</b>	<b>1.60</b>	<b>1.77</b>	<b>1.50</b>	<b>1.77</b>	<b>1.60</b>	<b>1.77</b>	<b>1.50</b>	<b>-1.50</b>



**Table 9: Deposit Money Bank's Interest Rates on Deposits and Loans in KHR and USD**

	Dec-17	Nov-18	Dec-18	Jan-19	Feb-19	Mar-19	Apr-20	May-19	Jun-19	Jul-19	Aug-19	Sep-19	Oct-19	Nov-19	Dec-19	Jan-20	Feb-20	Mar-20	Apr-20	May-20	Jun-20	Jul-20	
<i>Weighted Average Rate on New Amount</i>																							
<b>Interest Rate on Deposits and Loans in KHR</b>																							
<b>Deposit (1)</b>	0.90	0.54	0.33	0.58	0.67	0.52	0.69	0.80	0.65	0.59	0.47	0.65	0.62	0.62	0.65	0.57	0.64	0.71	0.53	0.62	0.60	0.57	0.74
Demand Deposits	0.04	0.03	0.03	0.08	0.02	0.01	0.02	0.03	0.03	0.04	0.02	0.02	0.08	0.09	0.12	0.03	0.15	0.06	0.06	0.06	0.09	0.04	0.04
Saving Deposits	1.19	0.58	0.59	0.57	0.59	0.66	0.60	0.63	0.62	0.59	0.55	0.56	0.60	0.61	0.60	0.67	0.65	0.66	0.66	0.66	0.69	0.69	0.67
Term Deposits	4.70	4.43	5.09	4.54	5.14	5.27	5.59	5.12	3.99	5.13	4.76	4.67	4.46	5.25	4.10	4.59	4.71	5.47	4.91	4.42	5.05	4.22	
Other Deposits	0.00	7.00	0.00	0.02	0.00	0.00	7.00	0.00	3.58	3.05	4.00	3.58	3.11	0.00	2.47	3.35	0.00	0.00	1.62	2.30	2.21	1.61	
<b>Loans (2)</b>	14.51	12.10	12.21	12.45	12.30	11.05	9.99	10.29	10.26	10.33	9.40	9.91	9.80	9.81	8.59	10.64	10.52	10.19	9.74	10.58	9.66	11.36	
Overdraft	7.55	8.01	8.30	7.88	8.42	8.08	7.92	7.87	7.73	8.05	7.85	7.84	7.85	8.01	7.72	7.82	7.61	7.94	7.93	7.96	7.98	8.45	
Credit Card	17.91	17.34	16.98	16.75	18.00	16.60	17.57	17.68	17.55	17.45	15.28	17.32	16.70	16.41	16.73	16.69	16.38	15.58	17.31	17.40	17.28	16.17	
Term Loans	14.91	12.14	12.36	12.87	12.78	11.31	10.22	10.49	10.42	10.60	10.02	10.25	10.06	10.13	9.13	11.11	11.02	10.86	10.39	11.72	10.31	11.53	
Other Loans	10.71	9.59	7.81	9.55	8.00	7.44	5.31	5.88	10.13	8.16	5.65	7.88	6.92	6.07	5.59	7.65	7.25	7.39	6.63	7.72	6.96	6.03	
<b>Interest Rate on Deposits and Loans in USD</b>																							
<b>Deposit (1)</b>	0.75	0.74	0.72	0.54	0.68	0.64	0.69	0.62	0.74	0.55	0.47	0.47	0.57	0.62	0.58	0.52	0.61	0.48	0.45	0.46	0.46	0.41	
Demand Deposits	0.22	0.26	0.30	0.22	0.21	0.18	0.19	0.18	0.24	0.18	0.15	0.13	0.18	0.30	0.20	0.11	0.20	0.12	0.14	0.17	0.20	0.08	
Saving Deposits	0.54	0.35	0.36	0.35	0.35	0.33	0.29	0.28	0.27	0.24	0.25	0.22	0.26	0.24	0.24	0.25	0.25	0.25	0.25	0.25	0.24	0.25	
Term Deposits	3.30	3.25	3.35	3.09	3.36	3.41	3.36	3.39	3.61	3.62	3.55	3.28	3.42	3.64	3.44	3.70	3.53	3.35	3.28	3.33	3.34	3.35	
Other Deposits	1.65	2.16	2.64	2.55	2.93	2.13	2.37	2.50	2.63	2.61	2.74	2.49	2.31	2.27	2.47	2.03	2.16	2.48	2.03	0.88	0.79	0.79	
<b>Loans (2)</b>	8.31	8.02	8.47	8.34	8.31	8.35	8.10	8.53	8.56	8.50	8.26	8.06	8.09	7.99	7.97	8.18	8.24	8.04	7.76	8.00	8.04	8.33	
Overdraft	7.51	7.28	7.57	7.68	7.68	7.57	7.60	7.56	7.85	7.48	7.47	7.50	7.71	7.47	7.57	7.59	7.57	7.49	7.49	7.39	7.45	5.58	
Credit Card	19.26	17.10	28.93	29.35	28.99	16.37	18.91	16.40	14.76	16.52	14.49	13.65	12.77	13.50	11.97	11.18	8.84	14.79	16.59	16.89	16.89	15.23	
Term Loans	9.92	9.44	9.64	8.83	9.37	9.83	9.38	9.60	9.37	9.61	9.82	9.26	8.88	9.28	8.72	9.55	9.60	9.41	8.78	9.43	9.22	9.27	
Other Loans	6.08	6.39	6.29	6.45	6.31	6.57	6.06	6.68	6.59	6.69	6.73	6.49	6.72	6.65	6.50	6.41	6.44	6.16	5.64	5.50	5.60	5.76	
<i>Weighted Average Rate on Outstanding Amount</i>																							
<b>Interest Rate on Deposits and Loans in KHR</b>																							
<b>Deposit (1)</b>	2.70	2.72	2.69	2.55	2.51	2.47	2.49	2.53	3.06	2.55	2.53	2.52	2.54	2.64	2.54	2.69	2.68	2.80	2.85	2.77	2.83	2.83	
Demand Deposits	0.17	0.22	0.20	0.23	0.23	0.20	0.19	0.21	0.21	0.21	0.21	0.21	0.21	0.21	0.23	0.22	0.16	0.28	0.18	0.19	0.23	0.29	
Saving Deposits	1.31	0.94	1.01	1.02	0.88	0.70	0.92	0.88	0.91	0.87	0.88	0.88	0.90	0.90	0.91	0.92	0.81	0.89	0.90	0.90	0.93	0.98	
Term Deposits	5.87	5.93	5.87	5.94	5.90	6.01	5.95	5.78	5.46	5.70	5.69	5.59	5.51	5.50	5.42	5.64	5.67	5.78	5.93	5.79	5.71	5.53	
Other Deposits	0.00	7.00	7.00	0.02	0.02	7.00	2.54	0.62	3.56	2.98	2.92	2.92	2.97	3.02	2.81	1.84	2.23	3.53	3.29	3.35	2.93	2.56	
<b>Loans (2)</b>	16.13	13.61	13.30	12.99	12.85	12.54	11.99	11.80	11.54	11.26	11.01	10.97	10.88	10.72	10.38	10.54	10.42	10.46	10.36	10.27	10.27	10.27	
Overdraft	8.72	8.34	8.34	8.30	8.30	8.20	8.17	8.19	8.11	8.10	8.08	8.11	8.11	8.20	8.08	8.14	8.12	8.08	8.03	8.10	8.12	8.09	
Credit Card	20.88	19.65	19.51	19.43	19.24	19.12	19.08	19.03	9.10	18.67	18.18	17.96	17.74	17.50	17.29	17.25	17.06	16.87	16.84	16.74	16.73	16.78	
Term Loans	16.55	13.77	13.50	13.23	13.06	12.74	12.13	11.94	11.69	11.38	11.20	11.15	11.04	10.88	10.62	10.70	10.61	10.66	10.54	10.44	10.44	10.44	
Other Loans	11.09	8.01	7.72	7.92	7.81	7.71	6.94	6.74	7.59	7.73	6.80	7.02	7.08	6.95	6.28	6.78	6.86	6.88	6.86	6.90	6.89	6.87	
<b>Interest Rate on Deposits and Loans in USD</b>																							
<b>Deposit (1)</b>	2.48	2.18	2.24	2.20	2.21	2.47	2.16	2.17	2.78	2.18	2.24	2.22	2.21	2.25	2.25	2.32	2.32	2.37	2.39	2.40	2.40	2.41	
Demand Deposits	0.51	0.48	0.46	0.45	0.45	0.50	0.46	0.39	0.45	0.48	0.51	0.44	0.36	0.43	0.35	0.30	0.47	0.36	0.45	0.46	0.44	0.47	
Saving Deposits	0.83	0.60	0.61	0.61	0.56	0.58	0.47	0.46	0.48	0.44	0.44	0.43	0.43	0.43	0.43	0.44	0.41	0.46	0.43	0.42	0.43	0.44	
Term Deposits	4.41	4.29	4.38	4.35	4.35	4.58	4.32	4.31	4.78	4.33	4.35	4.38	4.34	4.33	4.34	4.41	4.37	4.38	4.32	4.35	4.39	4.34	
Other Deposits	3.01	2.55	2.57	2.66	2.60	2.47	2.26	2.48	2.65	2.58	2.61	2.58	2.44	2.40	2.43	2.16	2.03	2.03	1.99	1.63	1.37	1.00	
<b>Loans (2)</b>	9.22	9.46	9.76	9.72	9.60	9.44	9.38	9.44	9.46	9.42	9.41	9.35	9.31	9.30	9.27	9.27	9.19	9.28	9.24	9.38	9.20	9.19	
Overdraft	8.10	7.96	7.94	7.96	7.98	7.99	7.99	7.99	7.95	7.95	7.94	7.92	7.85	7.85	7.82	7.88	7.85	7.78	7.84	7.86	7.84	7.87	
Credit Card	15.64	16.40	28.67	28.87	18.28	15.73	16.20	16.06	10.63	16.09	15.29	15.97	15.74	15.58	15.53	15.70	15.34	18.18	17.95	17.90	17.95	18.02	
Term Loans	9.43	9.72	9.74	9.64	9.72	9.64	9.72	9.74	9.71	9.68	9.59	9.56	9.55	9.51	9.51	9.62	9.51	9.46	9.63	9.42	9.44	9.40	
Other Loans	6.96	6.90	6.88	6.92	6.91	7.01	6.93	6.95	6.93	6.95	7.20	7.10	7.13	7.15	7.19	7.18	7.16	7.10	6.99	6.94	6.94	6.97	

Including Commercial Banks and Specialized Banks

(1). Weighted average interest rate on deposits

(2). Weighted average interest rate on loans excluding bank placements.

\*Revised Data

**Table 10: Central Bank Survey\***

(In Billion KHR)

	Mar-20	Apr-20	May-20	Jun-20	Jul-20
<b>Net Foreign Assets</b>	<b>74,495.1</b>	<b>75,508.6</b>	<b>77,658.8</b>	<b>79,364.4</b>	<b>81,169.3</b>
Claims on Nonresidents	74,966.4	75,981.0	78,133.6	79,840.1	81,656.8
Liabilities to Nonresidents	-471.3	-472.4	-474.9	-475.7	-487.5
<b>Claims on Other Depository Corporations</b>	<b>4,400.6</b>	<b>5,044.9</b>	<b>4,993.0</b>	<b>4,521.2</b>	<b>4,426.5</b>
<b>Net Claims on Central Government</b>	<b>-20,009.9</b>	<b>-19,998.9</b>	<b>-19,874.4</b>	<b>-19,371.4</b>	<b>-18,850.8</b>
Claims on Central Government	0.0	0.0	0.0	0.0	0.0
Liabilities to Central Government	-20,009.9	-19,998.9	-19,874.4	-19,371.4	-18,850.8
<b>Claims on Other Sectors</b>	<b>294.2</b>	<b>297.1</b>	<b>309.3</b>	<b>175.1</b>	<b>203.5</b>
Claims on Other Financial Corporations	239.9	248.0	248.1	124.2	125.9
Claims on State and Local Government	0.0	0.0	0.0	0.0	0.0
Claims on Public Nonfinancial Corporations	0.0	0.0	0.0	0.0	0.0
Claims on Private Sector	54.3	49.1	61.2	50.9	77.6
<b>Monetary Base</b>	<b>42,549.9</b>	<b>39,978.9</b>	<b>40,228.5</b>	<b>41,269.6</b>	<b>40,850.3</b>
Currency in Circulation	14,355.1	14,389.4	14,121.8	14,031.1	14,139.2
Liabilities to Other Depository Corporations	28,141.4	25,510.1	26,011.4	27,152.5	26,646.7
Liabilities to Other Sectors	53.4	79.4	95.3	86.0	64.4
<b>Other Liabilities to Other Depository Corporations</b>	<b>13,149.4</b>	<b>16,471.1</b>	<b>18,095.8</b>	<b>18,380.6</b>	<b>19,505.3</b>
<b>Deposits And Securities Other Than Shares Excl. Form Monetary Base</b>	<b>111.6</b>	<b>110.1</b>	<b>110.6</b>	<b>111.2</b>	<b>113.8</b>
Deposits Included in Broad Money	0.0	0.0	0.0	0.0	0.0
Securities Other Than Shares Incl. in Broad Money	0.2	0.0	0.0	0.0	0.0
Deposits Excl. From Broad Money	62.9	63.3	63.5	64.4	66.9
Securities Other Than Shares Excl. From Broad Money	48.5	46.8	47.0	46.8	46.9
<b>Loans</b>	<b>0.0</b>	<b>0.0</b>	<b>0.0</b>	<b>0.0</b>	<b>0.0</b>
<b>Financial Derivatives</b>	<b>0.0</b>	<b>0.0</b>	<b>0.0</b>	<b>0.0</b>	<b>0.0</b>
<b>Shares and Other Equity</b>	<b>5,038.5</b>	<b>5,974.9</b>	<b>6,336.0</b>	<b>6,614.5</b>	<b>8,144.5</b>
<b>Other Items (Net)</b>	<b>-1,669.3</b>	<b>-1,683.2</b>	<b>-1,684.2</b>	<b>-1,686.7</b>	<b>-1,665.3</b>
<i>IFS Vertical Check</i>	<i>0.0</i>	<i>0.0</i>	<i>0.0</i>	<i>0.0</i>	<i>0.0</i>

\* Included only central bank

\*\* Revised Data

**Table 11: Other Depository Corporations Survey\***

(In Billion KHR)

	Mar-20	Apr-20	May-20	Jun-20	Jul-20
<b>Net Foreign Assets</b>	<b>-17,493.3</b>	<b>-16,480.6</b>	<b>-15,768.1</b>	<b>-15,848.7</b>	<b>-15,084.5</b>
Claims on Nonresidents	15,830.2	17,015.5	17,674.5	17,059.0	18,383.4
Liabilities to Nonresidents	-33,323.5	-33,496.1	-33,442.7	-32,907.7	-33,467.9
<b>Claims On Central Bank</b>	<b>40,032.3</b>	<b>40,952.7</b>	<b>43,060.9</b>	<b>44,579.4</b>	<b>45,274.1</b>
Currency	1,474.7	1,569.7	1,382.0	1,380.8	1,339.7
Reserve Deposits and Securities Other Than Shares	38,526.4	39,352.6	41,650.6	43,172.4	43,910.9
Other Claims on Central Bank	31.3	30.4	28.3	26.3	23.5
<b>Net Claims on Central Government</b>	<b>-4,640.7</b>	<b>-4,693.2</b>	<b>-4,605.0</b>	<b>-4,780.7</b>	<b>-4,969.5</b>
Claims on Central Government	61.5	66.3	76.7	83.3	89.9
Liabilities to Central Government	-4,702.2	-4,759.5	-4,681.7	-4,864.0	-5,059.4
<b>Claims on Other Sectors</b>	<b>136,288.4</b>	<b>137,117.8</b>	<b>136,862.1</b>	<b>137,436.6</b>	<b>139,072.7</b>
Claims on Other Financial Corporations	4,526.8	4,687.9	4,618.4	4,637.0	4,605.6
Claims on State and Local Government	0.0	0.0	0.0	0.0	0.0
Claims on Public Nonfinancial Corporations	0.6	0.7	0.7	0.6	0.6
Claims on Private Sector	131,761.0	132,429.2	132,243.0	132,799.1	134,466.5
<b>Liabilities to Central Bank</b>	<b>3,192.9</b>	<b>3,542.4</b>	<b>3,608.5</b>	<b>3,449.9</b>	<b>3,380.2</b>
<b>Transferable Deposits Incl. in Broad Money</b>	<b>22,784.4</b>	<b>22,580.0</b>	<b>23,110.7</b>	<b>23,254.7</b>	<b>23,415.2</b>
<b>Other Deposits Incl. in Broad Money</b>	<b>83,504.3</b>	<b>84,615.1</b>	<b>86,526.6</b>	<b>88,123.3</b>	<b>91,052.4</b>
<b>Securities Other Than Shares Incl. in Broad Money</b>	<b>0.0</b>	<b>0.0</b>	<b>0.0</b>	<b>0.0</b>	<b>0.0</b>
<b>Deposits Excl. From Broad Money</b>	<b>279.8</b>	<b>213.6</b>	<b>132.7</b>	<b>152.7</b>	<b>161.4</b>
<b>Securities Other Than Shares Excl. From Broad Money</b>	<b>0.0</b>	<b>0.0</b>	<b>0.0</b>	<b>0.0</b>	<b>0.0</b>
<b>Loans</b>	<b>1,376.4</b>	<b>1,509.4</b>	<b>1,512.8</b>	<b>1,548.8</b>	<b>1,572.1</b>
<b>Financial Derivatives</b>	<b>0.0</b>	<b>0.0</b>	<b>0.0</b>	<b>0.0</b>	<b>0.0</b>
<b>Shares and Other Equity</b>	<b>37,850.8</b>	<b>38,553.1</b>	<b>39,163.9</b>	<b>39,551.4</b>	<b>39,856.8</b>
<b>Other Items (Net)</b>	<b>5,198.2</b>	<b>5,883.1</b>	<b>5,494.7</b>	<b>5,305.9</b>	<b>4,854.6</b>
<i>IFS Vertical Check</i>	<i>0.0</i>	<i>0.0</i>	<i>0.0</i>	<i>0.0</i>	<i>0.0</i>

\* Included commercial banks and MDIs

\*\* Revised Data

**Table 12: Depository Corporations Survey\***

(In Billion KHR)

	Mar-20	Apr-20	May-20	Jun-20	Jul-20
<b>Net Foreign Assets</b>	<b>57,001.8</b>	<b>59,028.0</b>	<b>61,890.6</b>	<b>63,515.6</b>	<b>66,084.8</b>
Claims on Nonresidents	90,796.6	92,996.5	95,808.1	96,899.1	100,040.1
Liabilities to Nonresidents	-33,794.8	-33,968.5	-33,917.5	-33,383.5	-33,955.3
<b>Domestic Claims</b>	<b>111,932.1</b>	<b>112,722.8</b>	<b>112,692.0</b>	<b>113,459.6</b>	<b>115,456.0</b>
<b>Net Claims on Central Government</b>	<b>-24,650.6</b>	<b>-24,692.1</b>	<b>-24,479.4</b>	<b>-24,152.1</b>	<b>-23,820.2</b>
Claims on Central Government	61.5	66.3	76.7	83.3	89.9
Liabilities to Central Government	-24,712.1	-24,758.4	-24,556.1	-24,235.4	-23,910.2
<b>Claims on Other Sectors</b>	<b>136,582.7</b>	<b>137,414.9</b>	<b>137,171.4</b>	<b>137,611.7</b>	<b>139,276.2</b>
Claims on Other Financial Corporations	4,766.7	4,935.9	4,866.6	4,761.2	4,731.5
Claims on State and Local Government	0.0	0.0	0.0	0.0	0.0
Claims on Public Nonfinancial Corporations	0.6	0.7	0.7	0.6	0.6
Claims on Private Sector	131,815.3	132,478.3	132,304.2	132,849.9	134,544.2
<b>Broad Money Liabilities (M2)</b>	<b>119,222.8</b>	<b>120,094.2</b>	<b>122,472.4</b>	<b>124,114.4</b>	<b>127,331.5</b>
Currency Outside Depository Corporations	12,880.5	12,819.7	12,739.7	12,650.4	12,799.4
Transferable Deposits	22,821.3	22,642.9	23,189.5	23,324.2	23,463.1
Other Deposits	83,520.8	84,631.7	86,543.2	88,139.9	91,069.0
Securities Other Than Shares	0.2	0.0	0.0	0.0	0.0
<i>of which Foreign Currency (of M2)</i>	<i>99,700.8</i>	<i>100,335.2</i>	<i>102,390.4</i>	<i>103,956.6</i>	<i>106,703.4</i>
<b>Deposits Excl. From Broad Money</b>	<b>342.7</b>	<b>276.9</b>	<b>196.2</b>	<b>217.1</b>	<b>228.3</b>
<b>Securities Other Than Shares Excl. From Broad Money</b>	<b>48.5</b>	<b>46.8</b>	<b>47.0</b>	<b>46.8</b>	<b>46.9</b>
<b>Loans</b>	<b>1,376.4</b>	<b>1,509.4</b>	<b>1,512.8</b>	<b>1,548.8</b>	<b>1,572.1</b>
<b>Financial Derivative</b>	<b>0.0</b>	<b>0.0</b>	<b>0.0</b>	<b>0.0</b>	<b>0.0</b>
<b>Shares and Other Equity</b>	<b>42,889.3</b>	<b>44,528.0</b>	<b>45,499.9</b>	<b>46,165.9</b>	<b>48,001.3</b>
<b>Other Items (Net)</b>	<b>5,054.2</b>	<b>5,295.5</b>	<b>4,854.2</b>	<b>4,882.2</b>	<b>4,360.6</b>
<i>IFS Vertical Check</i>	<i>0.0</i>	<i>0.0</i>	<i>0.0</i>	<i>0.0</i>	<i>0.0</i>

\* Included data of central bank and other depository corporations(ODCs)

\*\* Revised Data

**Table 13: Other Financial Corporations Survey\***

(In Billion KHR)

	Mar-20	Apr-20	May-20	Jun-20	Jul-20
<b>Net Foreign Assets</b>	<b>-1,079.4</b>	<b>-1,125.3</b>	<b>-1,198.0</b>	<b>-1,214.7</b>	<b>-1,204.4</b>
Claims on Nonresidents	117.0	102.4	100.0	101.5	128.6
Liabilities to Nonresidents	-1,196.4	-1,227.8	-1,298.0	-1,316.2	-1,333.0
<b>Claims on Depository Corporations</b>	<b>358.0</b>	<b>359.8</b>	<b>401.9</b>	<b>443.6</b>	<b>482.7</b>
<b>Net Claims on Central Government</b>	<b>-18.7</b>	<b>-20.6</b>	<b>-21.8</b>	<b>-22.6</b>	<b>-23.8</b>
Claims on Central Government	1.1	1.3	1.4	1.6	1.9
Liabilities to Central Government	-19.8	-21.9	-23.2	-24.2	-25.7
<b>Claims on Other Sectors</b>	<b>2,333.4</b>	<b>2,357.8</b>	<b>2,353.2</b>	<b>2,373.3</b>	<b>2,365.9</b>
Claims on State and Local Government	0.0	0.0	0.0	0.0	0.0
Claims on Public Nonfinancial Corporations	0.0	0.0	0.0	0.0	0.0
Claims on Private Sector	2,333.4	2,357.8	2,353.2	2,373.3	2,365.9
<b>Deposit</b>	<b>33.3</b>	<b>33.2</b>	<b>33.3</b>	<b>33.3</b>	<b>33.5</b>
<b>Securities Other Than Shares</b>	<b>0.0</b>	<b>0.0</b>	<b>0.0</b>	<b>0.0</b>	<b>0.0</b>
<b>Loans</b>	<b>132.6</b>	<b>133.1</b>	<b>133.5</b>	<b>145.7</b>	<b>184.9</b>
<b>Financial Derivatives</b>	<b>0.0</b>	<b>0.0</b>	<b>0.0</b>	<b>0.0</b>	<b>0.0</b>
<b>Shares and Other Equity</b>	<b>1,443.1</b>	<b>1,450.5</b>	<b>1,466.3</b>	<b>1,465.0</b>	<b>1,468.1</b>
<b>Other Items (Net)</b>	<b>-15.7</b>	<b>-45.1</b>	<b>-97.8</b>	<b>-64.4</b>	<b>-66.1</b>
<i>IFS Vertical Check</i>	<i>0.0</i>	<i>0.0</i>	<i>0.0</i>	<i>0.0</i>	<i>0.0</i>

\* Included only specialized banks

\*\* Revised Data

**Table 14: Financial Corporations Survey\***

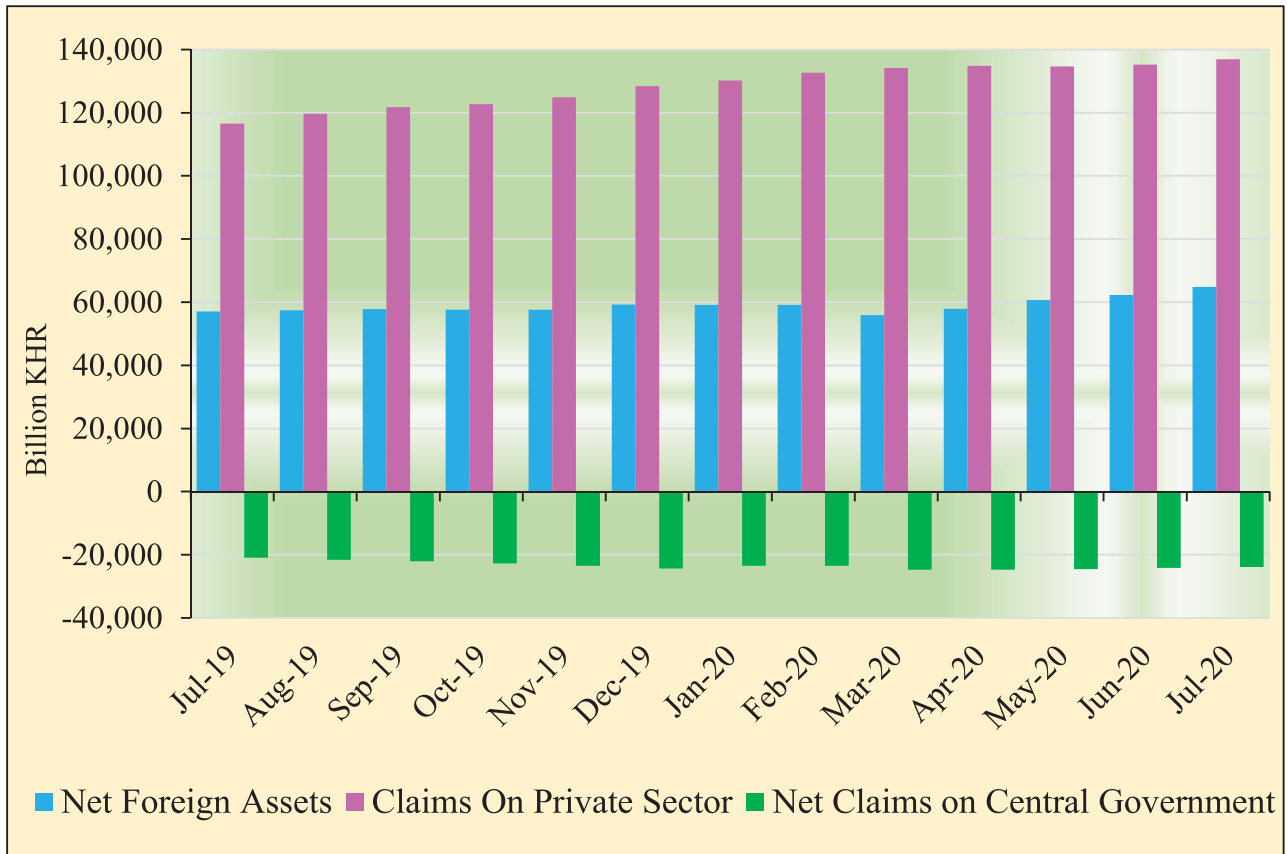
(In Billion KHR)

	Mar-20	Apr-20	May-20	Jun-20	Jul-20
<b>Net Foreign Assets</b>	<b>55,922.4</b>	<b>57,902.7</b>	<b>60,692.6</b>	<b>62,301.0</b>	<b>64,880.4</b>
Claims on Nonresidents	90,913.6	93,099.0	95,908.1	97,000.6	100,168.7
Liabilities to Nonresidents	-34,991.2	-35,196.3	-35,215.5	-34,699.6	-35,288.3
<b>Domestic Claims</b>	<b>109,480.0</b>	<b>110,124.1</b>	<b>110,156.9</b>	<b>111,049.1</b>	<b>113,066.6</b>
<b>Net Claims on Central Government</b>	<b>-24,669.3</b>	<b>-24,712.7</b>	<b>-24,501.2</b>	<b>-24,174.7</b>	<b>-23,844.0</b>
Claims on Central Government	62.6	67.6	78.0	84.9	91.8
Liabilities to Central Government	-24,731.9	-24,780.4	-24,579.2	-24,259.6	-23,935.9
<b>Claims on Other Sectors</b>	<b>134,149.3</b>	<b>134,836.8</b>	<b>134,658.1</b>	<b>135,223.8</b>	<b>136,910.6</b>
Claims on State and Local Government	0.0	0.0	0.0	0.0	0.0
Claims on Public Nonfinancial Corporations	0.6	0.7	0.7	0.6	0.6
Claims on Private Sector	134,148.7	134,836.1	134,657.4	135,223.2	136,910.0
<b>Currency Outside Financial Corporations</b>	<b>12,871.1</b>	<b>12,815.0</b>	<b>12,734.6</b>	<b>12,646.3</b>	<b>12,784.5</b>
<b>Deposits</b>	<b>104,967.1</b>	<b>105,782.1</b>	<b>108,150.5</b>	<b>109,940.6</b>	<b>113,033.0</b>
<b>Securities Other Than Shares</b>	<b>0.0</b>	<b>0.0</b>	<b>0.0</b>	<b>0.0</b>	<b>0.0</b>
<b>Loans</b>	<b>1,347.3</b>	<b>1,479.3</b>	<b>1,481.5</b>	<b>1,517.6</b>	<b>1,488.7</b>
<b>Financial Derivatives</b>	<b>0.0</b>	<b>0.0</b>	<b>0.0</b>	<b>0.0</b>	<b>0.0</b>
<b>Shares and Other Equity</b>	<b>44,332.4</b>	<b>45,978.5</b>	<b>46,966.2</b>	<b>47,630.9</b>	<b>49,469.4</b>
<b>Other Items (Net)</b>	<b>1,884.7</b>	<b>1,971.8</b>	<b>1,516.7</b>	<b>1,614.6</b>	<b>1,171.3</b>
<i>IFS Vertical Check</i>	<i>0.0</i>	<i>0.0</i>	<i>0.0</i>	<i>0.0</i>	<i>0.0</i>

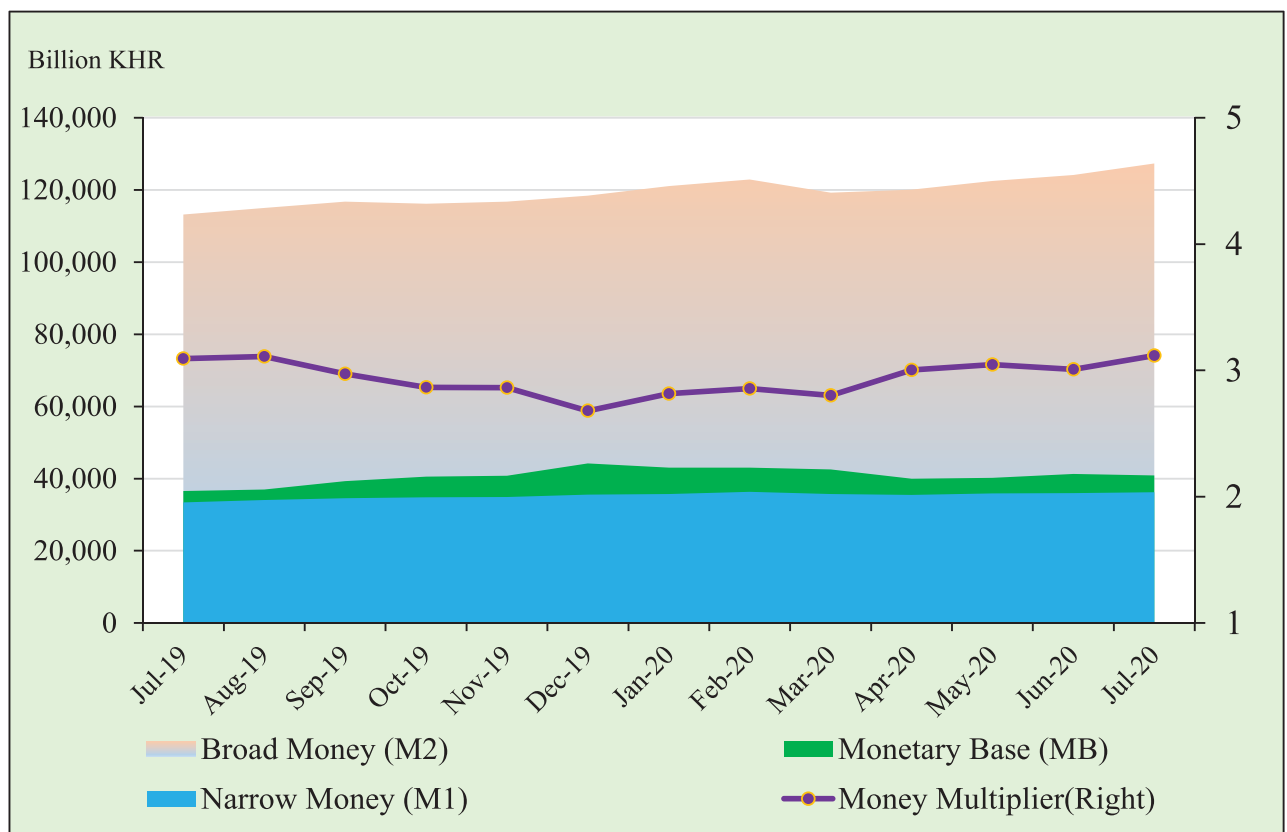
\* Included data of depository corporations and other financial corporations

\*\* Revised Data

### Chart 8: Financial Corporations Survey



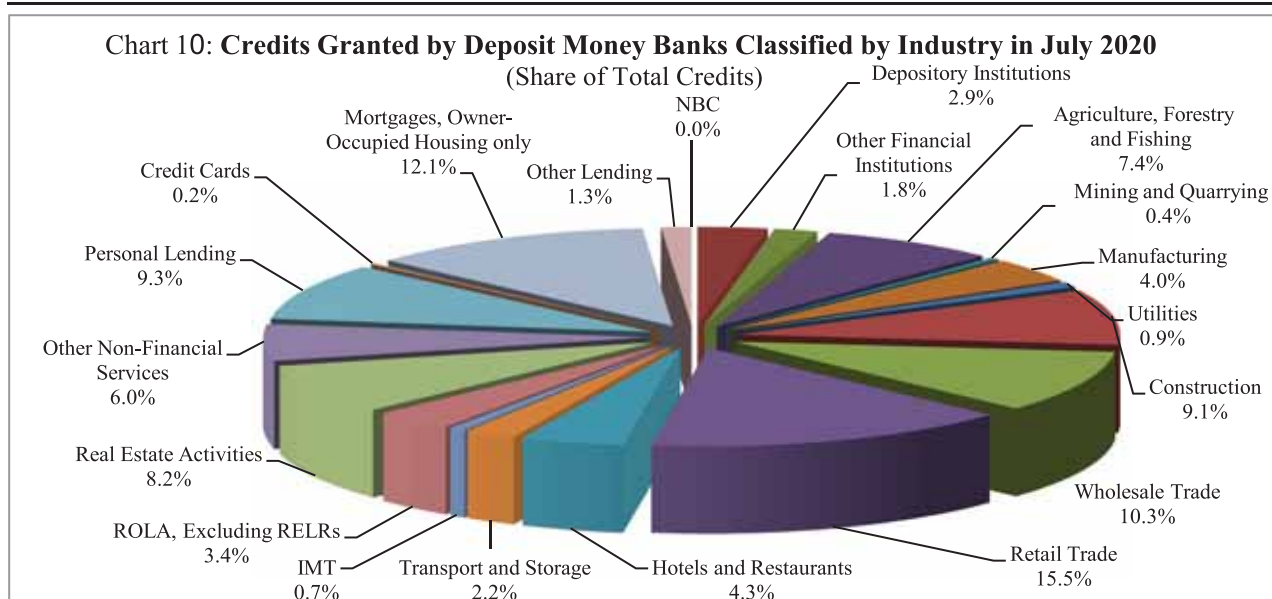
### Chart 9: Monetary Aggregates Components



**Table 15: Credit Granted by Deposit Money Banks Classified by Industry**

(In Billion KHR)

	Mar-20	Apr-20	May-20	Jun-20	Jul-20
<b>1. Financial Institutions</b>	<b>5,465.1</b>	<b>5,660.1</b>	<b>5,457.6</b>	<b>5,447.9</b>	<b>5,497.0</b>
1.1. National Bank of Cambodia	0.0	0.0	0.0	0.0	0.0
1.2. Depository Institutions	3,352.2	3,413.7	3,261.6	3,285.3	3,389.2
1.3. Other Financial Institutions	2,112.9	2,246.4	2,196.0	2,162.7	2,107.8
<b>2. Non-Financial Institutions</b>	<b>82,520.8</b>	<b>82,840.8</b>	<b>82,748.8</b>	<b>82,472.6</b>	<b>83,636.8</b>
2.1. Agriculture, Forestry and Fishing	8,369.7	8,521.9	8,524.8	8,391.0	8,591.7
2.2. Mining and Quarrying	525.5	508.1	505.4	569.4	507.3
2.3. Manufacturing	4,849.9	4,811.5	4,581.4	4,521.0	4,623.7
2.4. Utilities	996.7	959.4	967.2	970.9	1,075.0
2.5. Construction	10,378.8	10,538.8	10,398.6	10,390.5	10,498.0
2.6. Wholesale Trade	11,876.4	11,672.3	11,631.6	11,627.3	11,863.1
2.7. Retail Trade	17,394.4	17,429.1	17,451.9	17,459.3	17,848.7
2.8. Hotels and Restaurants	4,804.5	4,841.0	5,106.5	5,069.9	5,024.4
2.9. Transport and Storage	2,155.1	2,178.7	2,186.6	2,189.9	2,491.7
2.10. Information Media and Telecommunications	844.9	853.8	859.9	869.1	796.7
2.11. Rental and Operational Leasing Activities, Excluding Real Estate Leasing and Rentals	4,061.6	4,129.0	4,084.7	4,086.4	3,926.8
2.12. Real Estate Activities	9,137.3	9,171.4	9,207.6	9,394.2	9,454.9
2.13. Other Non-Financial Services	7,125.9	7,225.8	7,242.7	6,933.7	6,934.7
<b>3. Personal Essentials</b>	<b>23,284.9</b>	<b>23,732.9</b>	<b>24,242.8</b>	<b>24,651.8</b>	<b>24,923.3</b>
3.1. Personal Lending	9,869.6	9,934.5	10,454.6	10,737.1	10,788.1
3.2. Credit Cards	206.1	195.1	198.3	207.4	214.3
3.3. Mortgages, Owner-Occupied Housing only	13,209.1	13,603.2	13,589.8	13,707.3	13,920.9
<b>4. Other Lending</b>	<b>1,435.5</b>	<b>1,494.0</b>	<b>1,496.7</b>	<b>1,507.2</b>	<b>1,468.3</b>
<b>Total Gross Loan</b>	<b>112,706.3</b>	<b>113,727.8</b>	<b>113,945.8</b>	<b>114,079.5</b>	<b>115,525.5</b>





**Table 16: Monthly Change of Credit Granted by Deposit Money Banks Classified by Industry**

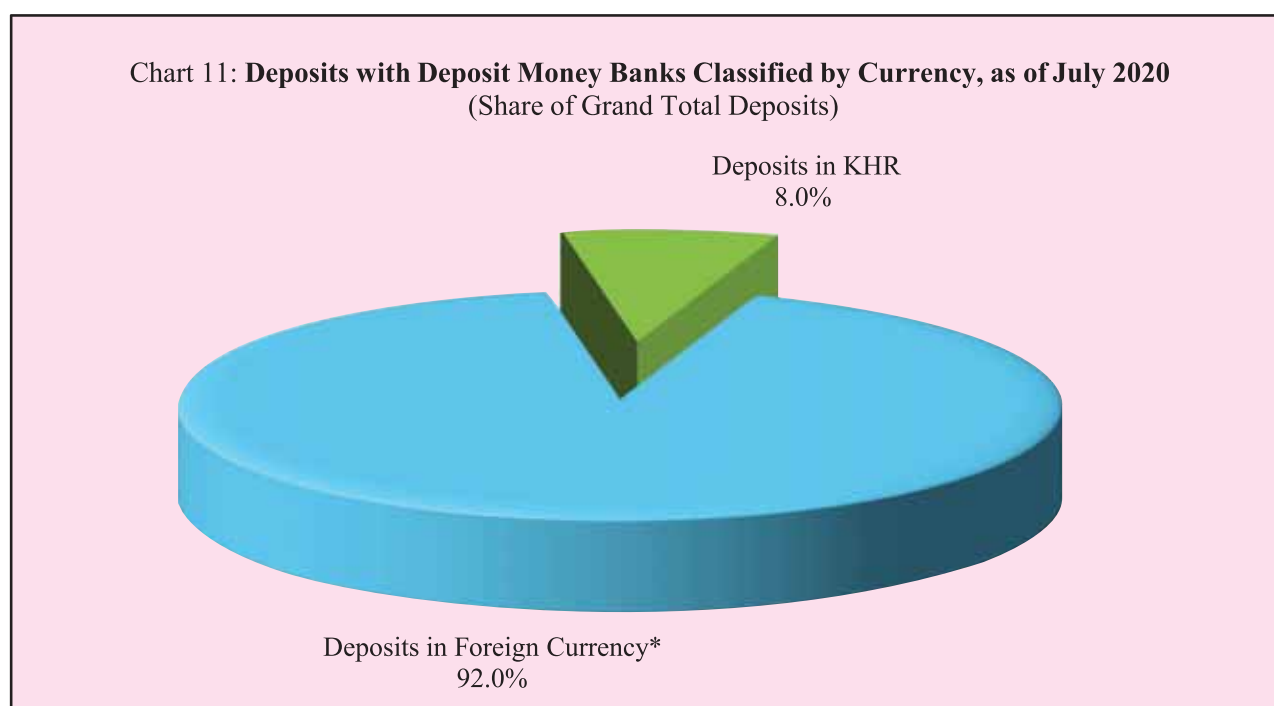
	Mar-20	Apr-20	May-20	Jun-20	Jul-20
<b>(Monthly Change in Billion KHR)</b>					
<b>1. Financial Institutions</b>	<b>331.3</b>	<b>194.9</b>	<b>-202.5</b>	<b>-9.6</b>	<b>49.1</b>
1.1. National Bank of Cambodia	0.0	0.0	0.0	0.0	0.0
1.2. Depository Institutions	216.1	61.5	-152.2	23.7	103.9
1.3. Other Financial Institutions	115.2	133.4	-50.4	-33.3	-54.8
<b>2. Non-Financial Institutions</b>	<b>1,100.5</b>	<b>320.0</b>	<b>-92.0</b>	<b>-276.3</b>	<b>1,164.3</b>
2.1. Agriculture, Forestry and Fishing	66.2	152.2	2.8	-133.8	200.7
2.2. Mining and Quarrying	78.5	-17.4	-2.7	63.9	-62.0
2.3. Manufacturing	-17.6	-38.4	-230.1	-60.4	102.8
2.4. Utilities	0.9	-37.4	7.9	3.7	104.1
2.5. Construction	10.0	160.0	-140.2	-8.1	107.5
2.6. Wholesale Trade	196.9	-204.1	-40.7	-4.4	235.9
2.7. Retail Trade	287.8	34.7	22.7	7.5	389.4
2.8. Hotels and Restaurants	149.8	36.5	265.5	-36.6	-45.5
2.9. Transport and Storage	-30.5	23.5	7.9	3.3	301.8
2.10. Information Media and Telecommunications	-7.0	8.9	6.0	9.2	-72.4
2.11. Rental and Operational Leasing Activities, Excluding Real Estate Leasing and Rentals	46.8	67.3	-44.3	1.7	-159.6
2.12. Real Estate Activities	272.8	34.1	36.2	186.6	60.7
2.13. Other Non-Financial Services	46.1	100.0	16.8	-309.0	1.0
<b>3. Personal Essentials</b>	<b>211.5</b>	<b>448.0</b>	<b>509.9</b>	<b>409.0</b>	<b>271.5</b>
3.1. Personal Lending	-65.4	64.9	520.1	282.5	51.0
3.2. Credit Cards	-3.6	-11.0	3.2	9.1	7.0
3.3. Mortgages, Owner-Occupied Housing only	280.6	394.2	-13.4	117.5	213.6
<b>4. Other Lending</b>	<b>98.4</b>	<b>58.5</b>	<b>2.6</b>	<b>10.5</b>	<b>-38.9</b>
<b>Total Gross Loan</b>	<b>1,741.8</b>	<b>1,021.5</b>	<b>218.0</b>	<b>133.7</b>	<b>1,446.0</b>
<b>(Monthly Change in Percent)</b>					
<b>1. Financial Institutions</b>	<b>6.5</b>	<b>3.6</b>	<b>-3.6</b>	<b>-0.2</b>	<b>0.9</b>
1.1. National Bank of Cambodia	0.0	0.0	0.0	0.0	0.0
1.2. Depository Institutions	6.9	1.8	-4.5	0.7	3.2
1.3. Other Financial Institutions	5.8	6.3	-2.2	-1.5	-2.5
<b>2. Non-Financial Institutions</b>	<b>1.4</b>	<b>0.4</b>	<b>-0.1</b>	<b>-0.3</b>	<b>1.4</b>
2.1. Agriculture, Forestry and Fishing	0.8	1.8	0.0	-1.6	2.4
2.2. Mining and Quarrying	17.6	-3.3	-0.5	12.7	-10.9
2.3. Manufacturing	-0.4	-0.8	-4.8	-1.3	2.3
2.4. Utilities	0.1	-3.8	0.8	0.4	10.7
2.5. Construction	0.1	1.5	-1.3	-0.1	1.0
2.6. Wholesale Trade	1.7	-1.7	-0.3	0.0	2.0
2.7. Retail Trade	1.7	0.2	0.1	0.0	2.2
2.8. Hotels and Restaurants	3.2	0.8	5.5	-0.7	-0.9
2.9. Transport and Storage	-1.4	1.1	0.4	0.2	13.8
2.10. Information Media and Telecommunications	-0.8	1.1	0.7	1.1	-8.3
2.11. Rental and Operational Leasing Activities, Excluded Real Estate Leasing and Rentals	1.2	1.7	-1.1	0.0	-3.9
2.12. Real Estate Activities	3.1	0.4	0.4	2.0	0.6
2.13. Other Non-Financial Services	0.7	1.4	0.2	-4.3	0.0
<b>3. Personal Essentials</b>	<b>0.9</b>	<b>1.9</b>	<b>2.1</b>	<b>1.7</b>	<b>1.1</b>
3.1. Personal Lending	-0.7	0.7	5.2	2.7	0.5
3.2. Credit Cards	-1.7	-5.4	1.7	4.6	3.4
3.3. Mortgages, Owner-Occupied Housing only	2.2	3.0	-0.1	0.9	1.6
<b>4. Other Lending</b>	<b>7.4</b>	<b>4.1</b>	<b>0.2</b>	<b>0.7</b>	<b>-2.6</b>
<b>Total Gross Loan</b>	<b>1.6</b>	<b>0.9</b>	<b>0.2</b>	<b>0.1</b>	<b>1.3</b>

**Table 17: Deposits with Deposit Money Banks**

(In Billion KHR)

	Mar-20	Apr-20	May-20	Jun-20	Jul-20
<b>Deposits in KHR</b>					
Demand deposits	2,799.5	2,634.5	2,736.5	2,642.3	2,816.9
Savings deposits	1,712.0	1,853.3	2,007.2	1,957.0	2,023.2
Fixed deposits	3,367.8	3,411.1	3,498.1	3,716.0	3,859.0
Others	97.7	102.7	104.6	114.8	110.3
<b>Total</b>	<b>7,976.9</b>	<b>8,001.6</b>	<b>8,346.4</b>	<b>8,430.2</b>	<b>8,809.5</b>
<b>Deposits in Foreign Currency*</b>					
Demand deposits	22,499.6	22,200.1	22,595.4	22,871.2	23,057.4
Savings deposits	29,252.0	28,987.0	29,560.4	30,032.8	30,972.5
Fixed deposits	42,924.4	43,760.0	44,353.9	44,777.6	45,904.5
Others	1,371.6	1,304.5	1,288.8	1,282.7	1,280.3
<b>Total</b>	<b>96,047.6</b>	<b>96,251.7</b>	<b>97,798.5</b>	<b>98,964.4</b>	<b>101,214.8</b>
<b>Grand Total</b>	<b>104,024.5</b>	<b>104,253.3</b>	<b>106,144.9</b>	<b>107,394.6</b>	<b>110,024.3</b>

\* Deposits in foreign currency include deposits of Cambodian residents and non-residents

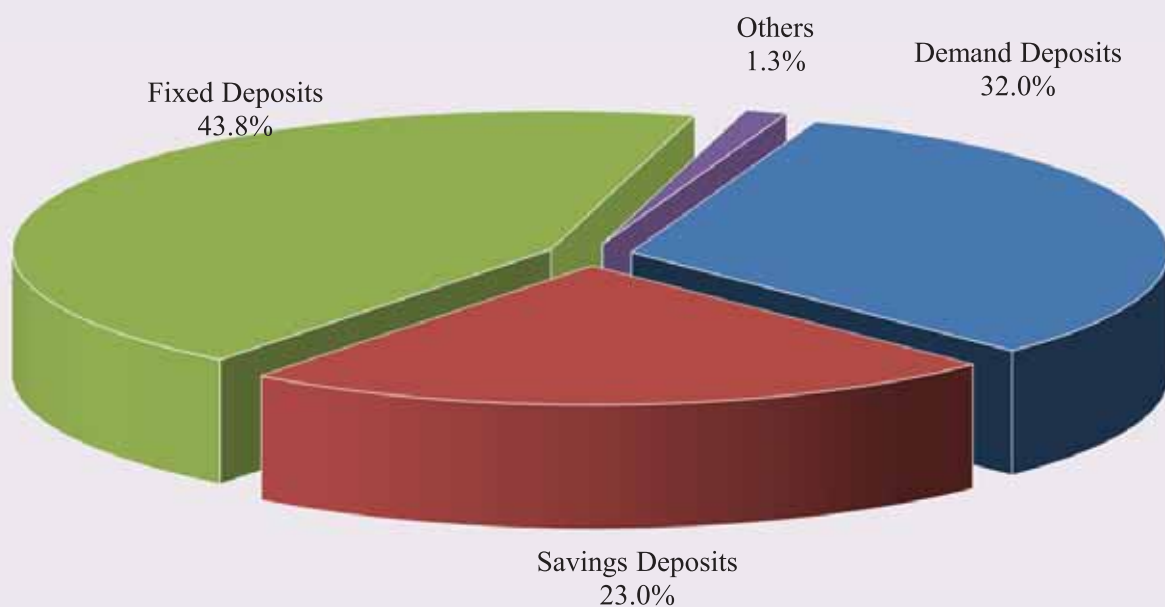


**Table 18: Monthly Change of Deposits with Deposit Money Banks**

	Mar-20	Apr-20	May-20	Jun-20	Jul-20
<b>(Change in Billion KHR)</b>					
<b>Deposits in KHR</b>					
Demand deposits	197.7	-165.0	102.0	-94.2	174.6
Savings deposits	-260.9	141.3	153.9	-50.2	66.3
Fixed deposits	-6.6	43.4	86.9	217.9	143.0
Others	0.0	5.0	1.9	10.3	-4.5
<b>Total</b>	<b>-69.8</b>	<b>24.6</b>	<b>344.8</b>	<b>83.8</b>	<b>379.3</b>
<b>Deposits in Foreign Currency</b>					
Demand deposits	-399.2	-299.5	395.3	275.9	186.2
Savings deposits	-2,544.1	-265.0	573.4	472.4	939.7
Fixed deposits	631.3	835.6	593.9	423.7	1,126.9
Others	34.4	-67.0	-15.7	-6.1	-2.4
<b>Total</b>	<b>-2,277.7</b>	<b>204.1</b>	<b>1,546.8</b>	<b>1,165.9</b>	<b>2,250.4</b>
<b>Grand Total</b>	<b>-2,347.4</b>	<b>228.7</b>	<b>1,891.6</b>	<b>1,249.7</b>	<b>2,629.8</b>
<b>(Percentage Change)</b>					
<b>Deposits in KHR</b>					
Demand deposits	7.6	-5.9	3.9	-3.4	6.6
Savings deposits	-13.2	8.3	8.3	-2.5	3.4
Fixed deposits	-0.2	1.3	2.5	6.2	3.8
Others	0.0	5.1	1.8	9.8	-4.0
<b>Total</b>	<b>-0.9</b>	<b>0.3</b>	<b>4.3</b>	<b>1.0</b>	<b>4.5</b>
<b>Deposits in Foreign Currency</b>					
Demand deposits	-1.7	-1.3	1.8	1.2	0.8
Savings deposits	-8.0	-0.9	2.0	1.6	3.1
Fixed deposits	1.5	1.9	1.4	1.0	2.5
Others	2.6	-4.9	-1.2	-0.5	-0.2
<b>Total</b>	<b>-2.3</b>	<b>0.2</b>	<b>1.6</b>	<b>1.2</b>	<b>2.3</b>
<b>Grand Total</b>	<b>-2.2</b>	<b>0.2</b>	<b>1.8</b>	<b>1.2</b>	<b>2.4</b>

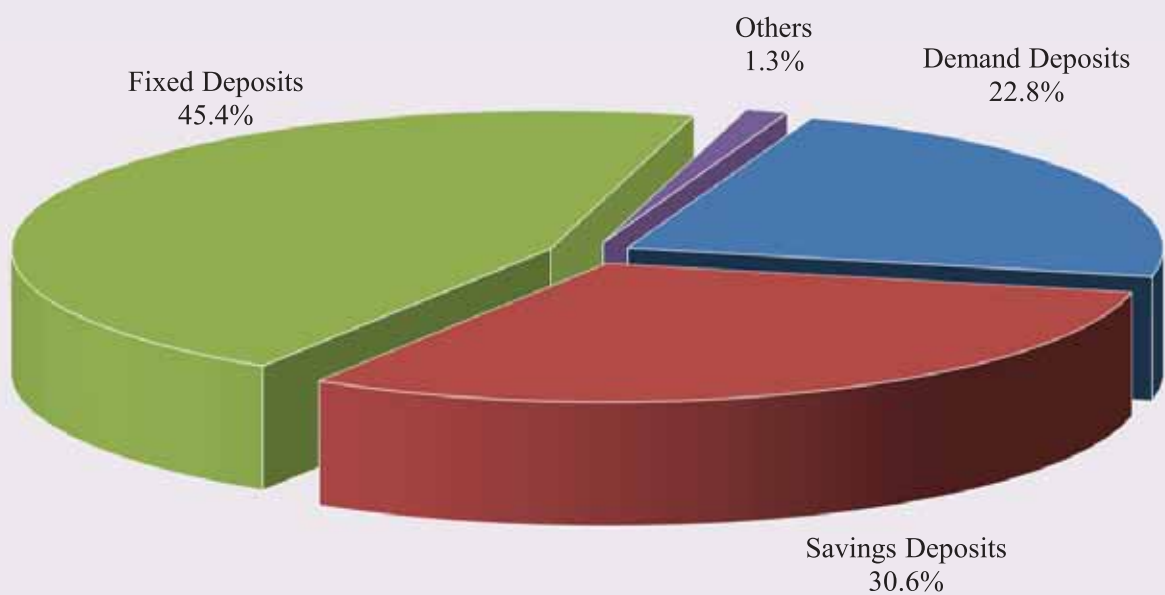
**Chart 12: Deposits in KHR Classified by Type, as July 2020**

(Share of Total KHR Deposits)



**Chart 13: Deposits in Foreign Currency Classified by Type, as of July 2020**

(Share of Total Foreign Currency Deposits)



**Table 19: Credit Granted by Micro-Finance Institutions\***

Period	Numbers of				Loan Outstanding (In Billion KHR)	Interest Rate	
	District	Commune	Village	Household		Monthly	Annually
<b>Dec-13</b>	2,282	16,384	89,829	1,610,844	5,364	2% - 3%	27%-39%
<b>Dec-14</b>	2,754	18,254	107,964	1,844,893	8,340	2% - 3%	27%-39%
<b>Dec-15</b>	4,576	27,510	141,514	2,149,180	12,365	2% - 4%	25%-41%
<b>Dec-16</b>	5,971	32,599	155,499	2,129,907	12,954	2% - 4%	25%-41%
<b>2017*</b>							
	Numbers of Branches			Number of Borrowers**	Loan Outstanding (In Billion KHR)	Interest Rate	
	Head Office	Province/ Krong	District/Khan			Monthly	Annually
<b>Dec</b>	76	366	975	1,776,467	17,236	1.4%-2.5%	16.9%-28.8%
<b>2018</b>							
<b>Aug</b>	79	376	947	1,825,842	20,278	1.2%-2.1%	15.4%-24.8%
<b>Sep</b>	77	372	943	1,828,019	20,621	1.2%-2.1%	15.3%-25.0%
<b>Oct</b>	78	394	947	1,851,259	21,045	1.2%-2.0%	13.4%-24.0%
<b>Nov</b>	79	407	946	1,867,806	21,567	1.2%-2.1%	15.1%-24.0%
<b>Dec</b>	80	399	944	1,872,916	21,813	1.2%-2.0%	15.1%-24.0%
<b>2019</b>							
<b>Jan</b>	80	399	944	1,881,822	22,630	1.2%-2.0%	15.0%-24.0%
<b>Feb</b>	81	399	944	1,893,175	23,206	1.2%-1.9%	14.7%-22.7%
<b>Mar</b>	81	399	947	1,917,689	24,020	1.2%-1.9%	15.0%-22.7%
<b>Apr</b>	81	400	949	1,944,818	24,675	1.2%-1.9%	14.9%-22.7%
<b>May</b>	81	401	949	1,968,804	25,293	1.2%-1.9%	14.9%-22.7%
<b>Jun</b>	81	405	956	1,990,822	25,922	1.2%-1.8%	15.0%-21.4%
<b>Jul</b>	81	395	953	2,013,430	26,705	1.2%-1.7%	14.4%-20.1%
<b>Aug</b>	82	396	956	2,036,114	27,454	1.2%-1.7%	14.5%-20.1%
<b>Sep</b>	82	397	960	2,050,622	27,987	1.2%-1.7%	14.3%-20.0%
<b>Oct</b>	82	402	962	2,073,408	28,291	1.1%-1.7%	14.2%-20.0%
<b>Nov</b>	82	403	965	2,091,365	28,886	1.1%-1.7%	14.2%-19.8%
<b>Dec</b>	82	406	965	2,109,170	29,357	1.1%-1.6%	13.4%-18.7%
<b>2020</b>							
<b>Jan</b>	81	381	909	2,053,957	29,314	1.1%-1.6%	13.6%-18.5%
<b>Feb</b>	81	377	910	2,070,481	29,930	1.1%-1.6%	13.9%-19.2%
<b>Mar</b>	81	376	910	2,081,328	30,267	1.1%-1.7%	13.8%-19.4%
<b>Apr</b>	81	379	913	2,055,408	29,843	1.1%-1.7%	13.6%-19.4%
<b>May</b>	80	370	887	2,031,904	29,259	1.1%-1.6%	13.7%-19.1%
<b>Jun</b>	80	367	889	2,040,143	29,226	1.1%-1.6%	13.4%-18.8%
<b>Jul</b>	80	367	885	2,059,759	29,760	1.1%-1.6%	13.4%-18.7%

\* Including MFI and MDI

\*\* Including Individuals and Legal Entities

\*\*\* Revised Data

**Table 20: KHR-Denominated Checks Clearing through Clearing House**

Date	Number of Cleared Check	Number of Working Day	Number of Cleared Check Per Day	Total Amount (In Billion KHR)	Daily Average Amount (In Billion KHR)	Returned Check	
						Number	Amount (In Billion KHR)
	1	2	3 = 1/2	4	5 = 4/2	6	7
Dec-15	10,709	22	487	519.9	23.6	29	0.79
<b>Total</b>	<b>106,919</b>	<b>233</b>	<b>459</b>	<b>4,854.2</b>	<b>20.8</b>	<b>252</b>	<b>47.39</b>
Dec-16	3,938	22	179	490.0	22.3	13	3.15
<b>Total</b>	<b>82,291</b>	<b>242</b>	<b>340</b>	<b>5,421.8</b>	<b>22.4</b>	<b>186</b>	<b>117.50</b>
Dec-17	3,074	20	154	599.0	30.0	22	12.48
<b>Total</b>	<b>37,485</b>	<b>239</b>	<b>1,885</b>	<b>6,607.8</b>	<b>333.1</b>	<b>138</b>	<b>28.51</b>
<b>2018</b>							
Aug	3,236	23	141	797.3	34.7	15	0.58
Sep	3,309	19	174	617.2	32.5	42	9.54
Oct	3,263	17	192	773.1	45.5	11	9.31
Nov	3,545	18	197	1,013.4	56.3	13	77.12
Dec	2,994	19	158	935.1	49.2	16	6.58
<b>Total</b>	<b>38,249</b>	<b>232</b>	<b>165</b>	<b>9,424.1</b>	<b>40.6</b>	<b>197</b>	<b>152.90</b>
<b>2019</b>							
Jan	3,620	21	172	1,318.5	62.8	13	0.63
Feb	3,279	19	173	941.9	49.6	12	0.45
Mar	3,233	20	162	1,168.3	58.4	13	2.70
Apr	3,118	18	173	894.9	49.7	18	3.73
May	3,375	17	199	1,299.8	76.5	21	11.41
Jun	3,201	19	168	892.3	47.0	16	10.04
Jul	3,845	23	167	1,025.2	44.6	12	34.63
Aug	3,669	22	167	1,065.8	48.4	29	477.70
Sep	3,397	18	189	1,269.3	70.5	20	75.00
Oct	3,641	20	182	1,145.6	57.3	19	2.07
Nov	3,584	18	199	997.0	55.4	15	1.15
Dec	3,734	21	178	1,584.1	75.4	18	11.33
<b>Total</b>	<b>41,696</b>	<b>236</b>	<b>177</b>	<b>13,602.7</b>	<b>57.6</b>	<b>206</b>	<b>630.84</b>
<b>2020</b>							
Jan	3,221	21	153	1,425.0	67.9	21	2.00
Feb	3,113	20	156	1,283.0	64.2	3	0.10
Mar	3,341	21	159	1,985.6	94.6	11	0.65
Apr	2,965	22	135	5,781.6	262.8	10	4,005.27
May	2,465	17	145	1,517.5	89.3	6	0.24
Jun	2,861	21	136	2,035.1	96.9	8	545.03
Jul	3,042	23	132	1,290.6	56.1	8	13.15
<b>Total</b>	<b>21,008</b>	<b>145</b>	<b>145</b>	<b>15,318.3</b>	<b>105.6</b>	<b>67</b>	<b>4,566.44</b>

**Table 21: USD-Denominated Checks Clearing through Clearing House**

Date	Number of Checks Cleared	Number of days Cleared	Number of Cleared Check per Day	Total Amount (In Million USD)	Daily Average Amount (In Million USD)	Returned Checks	
						Number	Amount (In Million USD)
	1	2	3 = 1/2	4	5 = 4/2	6	7
Dec-15	98,062	22	4,457	1,859.8	84.5	728	21.2
<b>Total</b>	<b>992,434</b>	<b>233</b>	<b>4,259</b>	<b>20,758.4</b>	<b>89.1</b>	<b>7,170</b>	<b>268.0</b>
Dec-16	92,820	22	4,219	2,220.4	100.9	778	44.8
<b>Total</b>	<b>1,025,209</b>	<b>242</b>	<b>4,236</b>	<b>21,790.4</b>	<b>90.0</b>	<b>8,738</b>	<b>439.6</b>
Dec-17	101,093	20	5,055	2,824.6	141.2	789	37.6
<b>Total</b>	<b>1,107,752</b>	<b>239</b>	<b>4,635</b>	<b>26,812.7</b>	<b>112.2</b>	<b>8,863</b>	<b>440.4</b>
<b>2018</b>							
Aug	113,994	23	4,956	3,915.9	170.3	823	98.0
Sep	98,989	19	5,210	5,280.3	277.9	1,322	2,069.7
Oct	101,438	17	5,967	3,190.0	187.7	901	70.3
Nov	104,391	18	5,800	3,609.1	200.5	811	36.0
Dec	111,978	19	5,894	3,917.1	206.2	904	63.6
<b>Total</b>	<b>1,238,232</b>	<b>232</b>	<b>5,337</b>	<b>41,462.7</b>	<b>178.7</b>	<b>10,474</b>	<b>2686.1</b>
<b>2019</b>							
Jan	118,135	21	5,625	5,128.7	244.2	928	76.5
Feb	94,722	19	4,985	3,172.1	167.0	687	33.1
Mar	111,842	20	5,592	3,945.0	197.3	848	81.2
Apr	104,540	18	5,808	3,915.2	217.5	896	49.1
May	109,758	17	6,456	3,839.4	225.8	1,013	60.3
Jun	106,018	19	5,580	3,840.7	202.1	788	69.8
Jul	126,695	23	5,508	4,546.5	197.7	1,066	77.2
Aug	117,840	22	5,356	4,367.2	198.5	969	85.8
Sep	103,820	18	5,768	3,539.7	196.6	789	42.2
Oct	117,828	20	5,891	4,215.1	210.8	906	39.8
Nov	105,249	18	5,847	6,651.0	369.5	800	3077.8
Dec	121,353	21	5,779	4,448.5	211.8	964	87.1
<b>Total</b>	<b>1,337,800</b>	<b>236</b>	<b>5,669</b>	<b>51,609.1</b>	<b>218.7</b>	<b>10,654</b>	<b>3779.9</b>
<b>2020</b>							
Jan	112,945	21	5,378	4,155.6	197.9	854	142.0
Feb	104,899	20	5,245	3,513.1	175.7	793	57.7
Mar	115,984	21	5,523	11,338.6	539.9	845	7539.5
Apr	92,572	22	4,208	3,580.9	162.8	720	447.8
May	86,011	17	5,059	2,951.1	173.6	706	64.7
Jun	95,099	21	4,529	3,602.3	171.5	656	88.9
Jul	103,633	23	4,506	3,565.0	155.0	654	27.6
<b>Total</b>	<b>711,143</b>	<b>145</b>	<b>4,904</b>	<b>32,706.5</b>	<b>225.6</b>	<b>5,228</b>	<b>8,368.0</b>

**Table 22: Visitor Arrivals in Cambodia**

	2020			% of Total		% Change	
	May	Jun	Jul	Jun	Jul	Jun/May	Jul/Jun
<b>(Mode of Arrival)</b>							
Phnom Penh International Airport	5,857	7,050	8,311	57.4	40.2	20.4	17.9
Kong Keng International Airport	1,292	1,200	1,898	9.8	9.2	-7.1	58.2
Siem Reap International Airport	38	28	3	0.2	0.0	-26.3	-89.3
Land	3,288	4,006	10,473	32.6	50.6	21.8	161.4
Boat	0	0	4	0.0	0.0	0.0	100.0
Preah Vihea	0	0	0	0.0	0.0	0.0	0.0
<b>Total</b>	<b>10,475</b>	<b>12,284</b>	<b>20,689</b>	<b>100.0</b>	<b>100.0</b>	<b>17.3</b>	<b>68.4</b>
<b>(Arrival by Purpose of Visit)</b>							
Tourist	4,243	4,838	10,909	39.4	52.7	14.0	125.5
Business and Professional	6,107	7,206	9,325	58.7	45.1	18.0	29.4
Others and not specified	125	240	455	2.0	2.2	92.0	89.6
<b>Total</b>	<b>10,475</b>	<b>12,284</b>	<b>20,689</b>	<b>100.0</b>	<b>100.0</b>	<b>17.3</b>	<b>68.4</b>
<b>(Top-Ten Countries of Passenger Arrivals)</b>							
Thailand	3,373	3,900	10,593	31.7	51.2	15.6	171.6
China (PRC)	6,125	6,785	7,390	55.2	35.7	10.8	8.9
South Korea	363	425	556	3.5	2.7	17.1	30.8
United States of America	55	186	485	1.5	2.3	2.4*	160.8
Taiwan	73	201	366	1.6	1.8	175.3	82.1
Malaysia	29	19	191	0.2	0.9	-34.5	9.1*
France	18	35	166	0.3	0.8	94.4	3.7*
Japan	35	59	134	0.5	0.6	68.6	127.1
United Kingdom	35	31	88	0.3	0.4	-11.4	183.9
Vietnam	24	205	86	1.7	0.4	7.5*	-58.0
Others	345	438	634	3.6	3.1	27.0	44.7
<b>Total</b>	<b>10,475</b>	<b>12,284</b>	<b>20,689</b>	<b>100.0</b>	<b>100.0</b>	<b>17.3</b>	<b>68.4</b>

*Source: Ministry of Tourism*

\* Increased in times, not in percentage (%). eg, Passenger Arrivals from USA increased 2.4 times in June.



**Table 23: Cambodia's Imports and Exports**

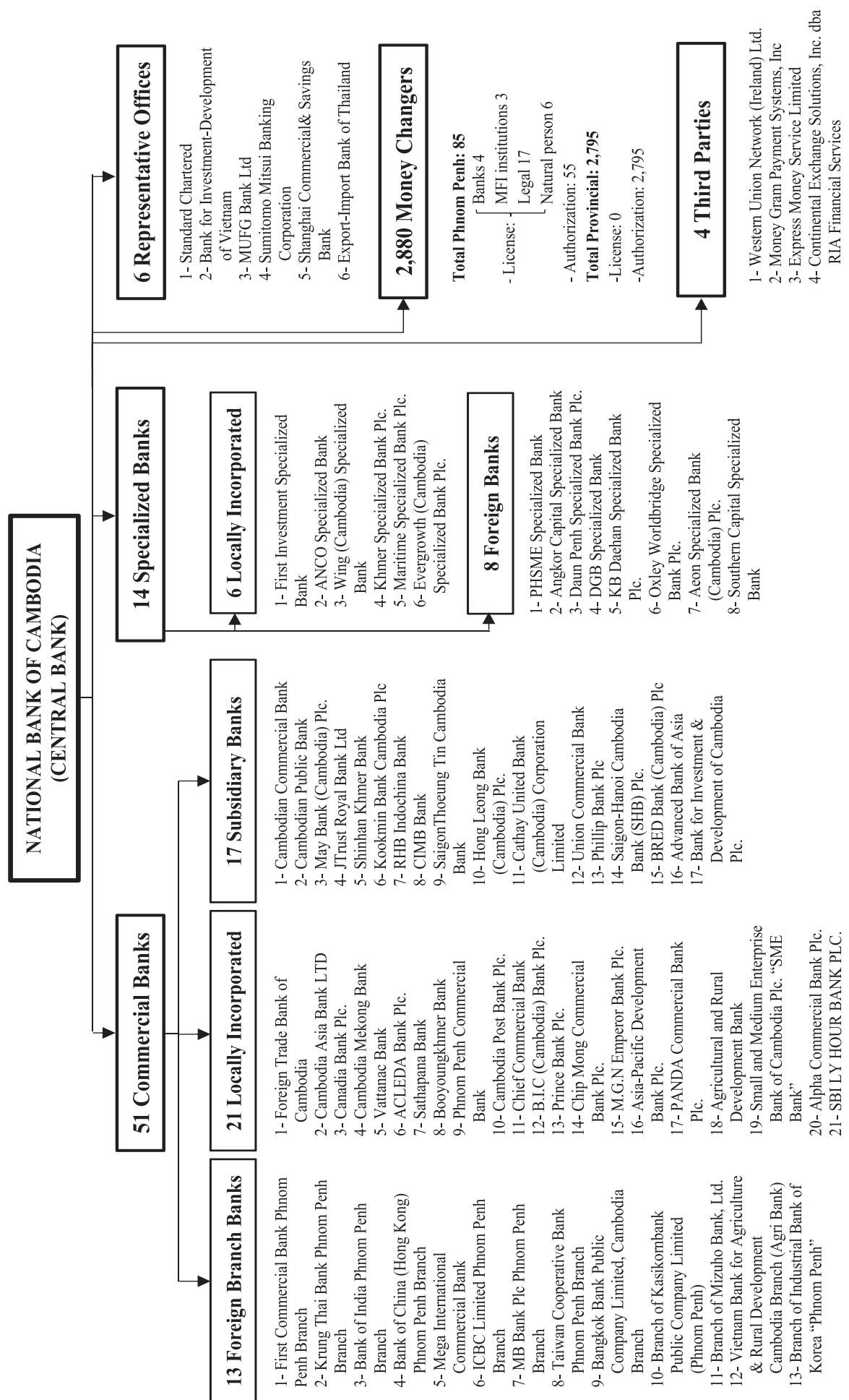
(In Billion KHR)

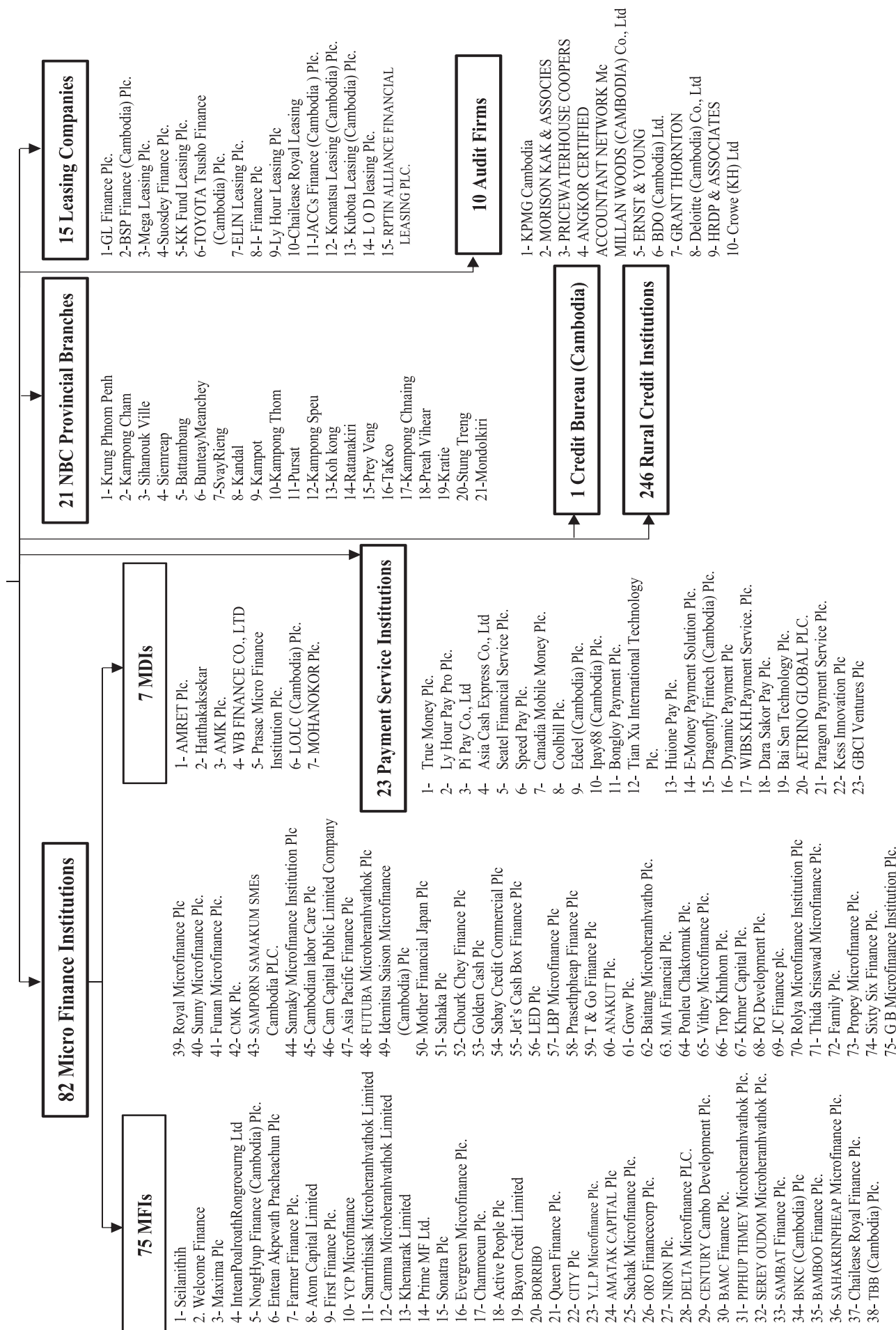
	2020			Change in Billion KHR		Change in %	
	May*	June*	July	Jun/May*	Jul/Jun	Jun/May*	Jul/Jun
<b>Imports by Commodity</b>							
Medicine	79.2	101.3	86.0	22.1	-15.2	27.9	-15.0
Cigarette	88.2	80.8	87.7	-7.4	6.9	-8.4	8.6
Food and Beverage	292.5	249.2	263.1	-43.4	13.9	-14.8	5.6
Equipment Construction	257.3	329.8	337.6	72.6	7.8	28.2	2.4
Cement	30.9	22.0	20.1	-8.9	-2.0	-28.7	-8.9
Steel	99.4	73.6	108.7	-25.8	35.1	-25.9	47.7
Phones	7.5	8.9	7.2	1.4	-1.7	19.1	-19.5
T.V	1.2	1.0	1.5	-0.3	0.6	-23.0	58.5
Other Electronic Equipment	28.7	203.7	216.1	175.0	12.3	6.1**	6.0
Garment	181.1	160.6	174.4	-20.5	13.8	-11.3	8.6
Fabric	1,171.1	1,217.2	1,270.2	46.1	53.0	3.9	4.4
Vehicle	345.0	292.3	339.8	-52.8	47.5	-15.3	16.3
Equipment of Cold	19.2	16.4	18.2	-2.8	1.8	-14.8	11.1
Gold	0.0	0.0	0.0	0.0	0.0	0.0	0.0
Oil	598.6	370.9	436.2	-227.7	65.3	-38.0	17.6
Fertilizer	80.7	97.9	76.5	17.2	-21.4	21.3	-21.8
Others	2,481.3	2,281.0	2,202.9	-200.3	-78.2	-8.1	-3.4
<b>Total Imports</b>	<b>5,762.0</b>	<b>5,506.6</b>	<b>5,646.2</b>	<b>-255.3</b>	<b>139.5</b>	<b>-4.4</b>	<b>2.5</b>
<b>Exports by Commodity</b>							
Garment	1,947.3	2,587.6	3,387.6	640.2	800.0	32.9	30.9
Footwear	352.7	439.0	443.6	86.3	4.6	24.5	1.0
Other Textile Product	291.9	350.3	573.8	58.4	223.4	20.0	63.8
Electrical Part	201.0	367.3	576.8	166.3	209.5	82.7	57.0
Vehicle and Bicycle Part	33.9	43.0	53.1	9.1	10.1	26.7	23.5
Bicycle	175.0	199.8	220.8	24.8	21.0	14.2	10.5
Wood Products	86.9	108.9	139.6	22.0	30.6	25.4	28.1
Rice	194.0	93.8	81.1	-100.2	-12.7	-51.6	-13.6
Rubber	66.9	65.9	95.4	-1.0	29.5	-1.6	44.8
Fish and Other Agricultural Products	70.3	40.2	36.2	-30.1	-4.1	-42.8	-10.1
Others	2,712.5	3,177.0	3,325.8	464.5	148.8	17.1	4.7
<b>Total Exports</b>	<b>6,132.5</b>	<b>7,472.9</b>	<b>8,933.7</b>	<b>1,340.4</b>	<b>1,460.8</b>	<b>21.9</b>	<b>19.5</b>

*Source: General Department of Cambodia Customs and Excise**\* Revised Data**\*\* Other Electronic Equipment was increased 6.1 times in June.*

**Table 24: THE BANKING SYSTEM IN CAMBODIA**

*As of 31 July, 2020*





**អ៊ីនធឺណែត**  
**INTERNET**

: [www.nbc.org.kh](http://www.nbc.org.kh) គឺជាគេហទំព័ររបស់ធនាគារជាតិនៃកម្ពុជា ។ ទិន្នន័យថ្មីៗក្នុងគេហទំព័រ និងទិន្នន័យបន្តបន្ទាប់ទៀត ត្រូវបាននិងកំពុងដាក់បញ្ចូលទៅក្នុងប្រព័ន្ធទិន្នន័យ តាមធនធាន ដែលមាន ។ លើសពីនេះទៀត គេហទំព័រនេះ គឺជាទីតាំងដ៏ល្អបំផុតដើម្បីទទួលបានទិន្នន័យសង្ខេប នៃការចេញផ្សាយចុងក្រោយបង្អស់ ។

[www.nbc.org.kh](http://www.nbc.org.kh) is the National Bank of Cambodia website. The website new data and metadata are progressively being added to the database, as resources permit. This website is the best place to start for access to summary data from the latest publications.

**សេវាព័ត៌មាន**  
**INFORMATION SERVICE**

: បុគ្គលិករបស់នាយកដ្ឋានស្ថិតិ នៃធនាគារជាតិនៃកម្ពុជា អាចជួយចង្អុលបង្ហាញ ឬណែនាំ អ្នកប្រើប្រាស់ក្នុងការស្វែងរកទិន្នន័យតាមតម្រូវការ ។ ការបោះពុម្ពផ្សាយរបស់ធនាគារជាតិនៃកម្ពុជា អាចរកជាវបាន ហើយសេវាលើការជាវជាប្រចាំក៏អាចរៀបចំបានដែរ ។ ចំពោះសេវាលើទិន្នន័យ ពិសេសផ្សេងទៀតក៏អាចរកបានផងដែរ តាមរយៈការមកជាវព្រឹត្តិបត្រដោយផ្ទាល់ ។

The Statistics Department staff of the National Bank of Cambodia can assist users in addressing their data requirements. The National Bank of Cambodia publications are available for sale and subscription services can be arranged. Other special data services are also available, on a user pays basis.

**អាសយដ្ឋានទំនាក់ទំនង**  
**CONTACT DETAILS**

**ធនាគារជាតិនៃកម្ពុជា**

NATIONAL BANK OF CAMBODIA

នាយកដ្ឋានស្ថិតិ

Statistics Department

អគារលេខ ៦៩-៧០ មហាវិថីហាណូយ (លេខ១០១៩) ភូមិបាយ៉ាប សង្កាត់ភ្នំពេញថ្មី

ខណ្ឌសែនសុខ រាជធានីភ្នំពេញ

#69-70, Hanoi Blvd. (1019), Phum Bayab, Sangkat Phnom Penh Thmei, Cambodia

អ៊ីម៉ែល : [statistics@nbc.org.kh](mailto:statistics@nbc.org.kh)

E-mail : [statistics@nbc.org.kh](mailto:statistics@nbc.org.kh)

ទូរស័ព្ទ : (៨៥៥) ២៣ ៧២២ ៥៦៣ – ១១១៥

Telephone: (855) 23 722 563 – 1115

ទូរសារ : (៨៥៥) ២៣ ៤២៦ ១១៧

Facsimile : (855) 23 426 117



ISSN 2074-5680

**ផលិតដោយ ធនាគារជាតិនៃកម្ពុជា**

Produced by the National Bank of Cambodia