



វិទ្យាស្ថានបណ្តុះបណ្តាល និង ស្រាវជ្រាវដើម្បីអភិវឌ្ឍន៍កម្ពុជា
**CDRI—Cambodia’s leading independent
development policy research institute**

របាយការណ៍ខ្លីៗស្តីពីសេដ្ឋកិច្ចកម្ពុជា
Flash Report on the Cambodian Economy

ឧសភា ២០១៣ / May 2013

វត្ត វឌ្ឍនា / Roth Vathana

ប៉ុន ជូរីណា / Pon Dorina

បកប្រែដោយ៖ យូ សិទ្ធិវិទូ និង ខេង សេង

ភ្នំពេញ កម្ពុជា

Phnom Penh, Cambodia

TO SUBSCRIBE, PLEASE CONTACT:

Office address: #56, Street 315, Tuol Kork, Phnom Penh, Cambodia; *postal address:* CDRI, PO Box 622 Phnom Penh, Cambodia;
tel: (855-23) 881-384/881-701/881-916/883-603 ; *fax:* (855-23) 880-734 ; *email:* pubs@cdri.org.kh; *website:* <http://www.cdri.org.kh>

ការបកស្រាយតារាងសំខាន់

Highlights

របាយការណ៍នេះ បកស្រាយពីស្ថានភាពសេដ្ឋកិច្ចមួយចំនួនរបស់កម្ពុជា និងបណ្តាប្រទេសជាដៃគូពាណិជ្ជកម្ម ដោយធ្វើការប្រៀបធៀបតួលេខថ្មីៗ ជាមួយនឹងខែមុនៗ។

This report highlights a number of economic indicators of Cambodia and its partners. It compares recent figures with those of earlier periods.

នៅត្រីមាសទី១ ឆ្នាំ២០១៣ វិនិយោគគិតជាទ្រព្យសកម្មជាប់លាប់សរុបខាងឧស្សាហកម្មអនុម័តដោយក្រុមប្រឹក្សាអភិវឌ្ឍន៍កម្ពុជា ធ្លាក់ចុះ ៥៩,៦% ធៀបនឹងត្រីមាសមុន (៥២,៣% ធៀបនឹងមួយឆ្នាំមុន) មកត្រឹម ៧៩,៥លានដុល្លារ។

In the first quarter of 2013, total fixed asset investments in industry approved by the Council for the Development of Cambodia declined by 59.6 percent from a quarter earlier (52.3 percent year on year) to USD79.5 m.

នៅខែមីនា ចំនួនភ្ញៀវបរទេសមកដល់សរុប ធ្លាក់ចុះ ០,៩% ធៀបនឹងខែមុន (កើន ១៨% ធៀបនឹងមួយឆ្នាំមុន)។ ភ្ញៀវមកលំហែធ្លាក់ចុះ ១,១% (កើន ២២% ធៀបនឹងមួយឆ្នាំមុន)។ ភ្ញៀវមកធ្វើជំនួញកើន ២,២% (២២% ធៀបនឹងមួយឆ្នាំមុន) រីឯភ្ញៀវផ្សេងៗទៀតកើន ៨,៤% ប៉ុន្តែធ្លាក់ចុះ ៧៨% បើធៀបនឹងមួយឆ្នាំមុន។

In March, total foreign visitor arrivals dropped 0.9 percent from the previous month (18 percent increase year on year). Holiday arrivals went down 1.1 percent (22 percent rise year on year). Business arrivals rose by 2.2 percent from a month earlier (22 percent year on year). “Other” arrivals increased by 8.4 percent from the previous month, but year on year decreased by 78 percent.

នៅខែកុម្ភៈ តម្លៃអនុម័តគម្រោងសាងសង់សរុបធ្លាក់ចុះ ៧០,៥% ធៀបនឹងខែមុន (៣២,៥% ធៀបនឹងមួយឆ្នាំមុន) មកត្រឹម ៦៣,៩លានដុល្លារ។ តម្លៃអនុម័តគម្រោងភូមិគ្រឹះនិងផ្ទះធ្លាក់ចុះ ៩៧,៦% (៩៥,២% ធៀបនឹងមួយឆ្នាំមុន) មកត្រឹម ២,៨លានដុល្លារ ហើយតម្លៃគម្រោងផ្ទះល្វែងធ្លាក់ចុះ ៤១,៨% (កើន ៤២,៧% ធៀបនឹងមួយឆ្នាំមុន) ដល់ ២២,៨លានដុល្លារ និង សម្រាប់គម្រោងសាងសង់ផ្សេងទៀត ធ្លាក់ចុះ ៣២% (កើន ៩៤,៨% ធៀបនឹងមួយឆ្នាំមុន)។

In February, the total value of construction approvals dropped by 70.5 percent from a month earlier (32.5 percent year on year) to USD63.9 m. The value of villas and houses declined 97.6 percent (95.2 percent year on year) to USD2.8 m. The value of flats decreased by 41.8 percent (42.7 percent increase year on year) to USD22.8 m and of “other” by 32 percent (94.8 percent rise year on year).

នៅខែមីនា សន្ទស្សន៍ថ្លៃទំនិញប្រើប្រាស់ (គ្រប់មុខទំនិញ) ធ្លាក់ចុះ ០,១% ធៀបនឹងខែមុន (កើន ០,៩% ធៀបនឹងមួយឆ្នាំមុន)។ ថ្លៃអាហារ និងភេសជ្ជៈគ្មានជាតិស្រាធ្លាក់ចុះ ០,០២% (កើន ១,៧% ធៀបនឹងមួយឆ្នាំមុន)។ ថ្លៃសម្លៀកបំពាក់ និងស្បែកជើងកើន ០,២% (៣,៥% ធៀបនឹងមួយឆ្នាំមុន)។ ថ្លៃស្នាក់នៅ និងទឹកភ្លើងកើន ០,០២% (ធ្លាក់ចុះ ០,៣% ធៀបនឹងមួយឆ្នាំមុន)។

In March, the consumer price index (all items) declined by 0.1 percent from the previous month (0.9 percent rise year on year). Prices of food and non-alcoholic beverages decreased by 0.02 percent (1.7 percent increase year on year). Prices of clothing and footwear rose by 0.2 percent (3.5 percent year on year). Prices of housing and utilities increased by 0.02 percent from a month earlier (0.3 percent decrease year on year).

នៅខែមេសា ម៉ាស៊ូតធ្លាក់ថ្លៃ ២,២% ធៀបនឹងខែមុន (៣,៨% ធៀបនឹងមួយឆ្នាំមុន) មកត្រឹម ៤៩៩៣រៀល/លីត្រ ហើយសាំងធ្លាក់ថ្លៃ ២,៦% (៤,៩% ធៀបនឹងមួយឆ្នាំមុន) មកត្រឹម ៥២៦២រៀល/លីត្រ។ នៅខែមករា អត្រាការប្រាក់លើបញ្ជីជាប្រយោជន៍ ១ខែ គឺ ៥,៩៤% ឬ កើន ០,០៦ ឯកតាភាគរយ ធៀបនឹងខែមុន ប៉ុន្តែធ្លាក់ចុះ ០,៤ ឯកតាភាគរយ បើធៀបនឹងឆ្នាំមុន។ អត្រាការប្រាក់លើបញ្ជីជាប្រយោជន៍ ១ខែ កើន ០,០១ ឯកតាភាគរយ ធៀបនឹងខែមុន ប៉ុន្តែនៅថេរធៀបនឹងឆ្នាំមុន។ នៅខែឧសភា ប្រាក់រៀលធ្លាក់ថ្លៃ ០,៩% ទល់នឹងដុល្លារ (ឡើងថ្លៃ ០,២% ធៀបនឹងឆ្នាំមុន) ធ្លាក់ថ្លៃ ១,៥% ធៀបនឹងខែមុន (៦,០% ធៀបនឹងមួយឆ្នាំមុន) ទល់នឹងប្រាក់បាតថៃ។ ប្រាក់រៀលធ្លាក់ថ្លៃ ០,៧% ធៀបនឹងខែមុន ទល់នឹងប្រាក់ដុល្លារវៀតណាម ប៉ុន្តែឡើងថ្លៃ ០,២% បើធៀបនឹងមួយឆ្នាំមុន។

In April, the price of diesel fuel dropped by 2.2 percent from the preceding month (3.8 percent year on year) to KHR4993/litre and of gasoline by 2.6 percent (4.9 percent year on year) to KHR5262/litre. In January, the interest rate on 12-month riel deposits was 5.94 percent, a 0.06 percentage point increase from a month earlier, but a decrease of 0.4 percentage point year on year. The 12-month dollar deposit rate increased by 0.01 percentage point from the previous month, but was unchanged year on year. In May, the riel depreciated 0.9 percent from the previous month against the US dollar, but appreciated 0.2 percent year on year. The riel depreciated 1.5 percent from the previous month (6.0 percent year on year) against the Thai baht. The riel depreciated 0.7 percent from a month earlier against the Vietnamese dong, but appreciated 0.2 percent year on year.

នៅខែមីនា ការនាំចូលស៊ីម៉ង់ត៍កើន ១៨,៧% ធៀបនឹងខែមុន (២២,៥% ធៀបនឹងមួយឆ្នាំមុន) ដល់ ៨,៨លានដុល្លារ ហើយការនាំចូលដែកថែបកើន ២១២,៨% (១៣៩,៨% ធៀបនឹងមួយឆ្នាំមុន) ដល់ ២០,៨លានដុល្លារ។ ការនាំចូលសម្ភារៈសំណង់ធ្លាក់ចុះ ៩១,៧% (៨៦,៥% ធៀបនឹងឆ្នាំមុន) មកត្រឹម ០,៥លានដុល្លារ។ នៅខែដដែល ការនាំចេញសម្លៀកបំពាក់គ្រប់មុខ កើន ២៣,៧% ធៀបនឹងខែមុន (១១,១% ធៀបនឹងឆ្នាំមុន) ដល់ ២៨៤,៧លានដុល្លារ, ការនាំចេញស្បែកជើងកើន ៥៩,២% (៤៦,៧% ធៀបនឹងឆ្នាំមុន) ដល់ ២៩,៨លានដុល្លារ, ការនាំចេញវាយនភ័ណ្ឌផ្សេងទៀតកើន ៨០,៧% (១៤,៤% ធៀបនឹងឆ្នាំមុន) ដល់ ៧,៣លានដុល្លារ។ ការនាំចូលសាំងកើន ៦,៨% ធៀបនឹងខែមុន (១៣,៧% ធៀបនឹងឆ្នាំមុន) ដល់ ២៨,៨លានដុល្លារ ឯការនាំចូលម៉ាស៊ូតធ្លាក់ចុះ ១,៥% (៤,៤% ធៀបនឹងឆ្នាំមុន) មកត្រឹម ៤៣,៨លានដុល្លារ ហើយការនាំចូលម៉ាស៊ូតខ្មៅធ្លាក់ចុះ ១,០% (កើន ២៩,៩% ធៀបនឹងឆ្នាំមុន) ដល់ ៧,៦លានដុល្លារ។

In March, imports of cement rose 18.7 percent from a month earlier (22.5 percent year on year) to USD8.8 m and of steel by 212.8 percent (139.8 percent year on year) to USD20.8 m. Imports of construction equipment dropped 91.7 percent (86.5 percent year on year) to USD0.5 m. In the same month, exports of clothing (all kinds) rose by 23.7 percent from a month earlier (11.1 percent year on year) to USD388.7 m and of shoes by 59.2 percent (46.7 percent year on year) to USD29.8 m and of other textile products by 80.7 percent (14.4 percent year on year) to USD7.3 m. Imports of gasoline in March rose by 6.8 percent from the preceding month (13.7 percent year on year) to USD28.8 m. Imports of diesel dropped by 1.5 percent from the preceding month (4.4 percent year on year) to USD43.8 m and of fuel oil by 1.0 percent, but year on year increased by 29.9 percent to USD7.6 m.

នៅខែកុម្ភៈ ចំណូលចរន្តសរុបរបស់រដ្ឋាភិបាលកើន ១៧,៥% ធៀបនឹងខែមុន (០,៥% ធៀបនឹងមួយឆ្នាំមុន) ដល់ ៦១៨លានរៀល។ ចំណូលពន្ធក្នុងស្រុកកើន ៧,៧% (៦,៤% ធៀបនឹងឆ្នាំមុន) ដល់ ៤០៩,៧លានរៀល, ចំណូល

In February, total government current revenue rose by 17.5 percent from the previous month (0.5 percent year on year) to KHR618 bn. Revenue from domestic taxes went up 7.7 percent (6.4 percent year on year) to KHR409.7 bn, from non-taxes by 116.1 percent (5.5 percent year on year) to KHR81.8 bn. Revenue from import and export taxes increased by 5.3 percent from a month earlier to KHR100.9 bn, but decreased

មិនមែនពន្ធកើន ១១៦,១% (៥,៥% ធៀបនឹងឆ្នាំមុន) ដល់ ៨១,៨ ពាន់លានរៀល ឯចំណូលពន្ធនាំចូលកើន ៥,៣% ដល់ ១០០,៩ ពាន់លានរៀល (ធ្លាក់ចុះ ២១,៣% ធៀបនឹងឆ្នាំមុន)។ នៅខែដដែល ចំណាយចរន្តសរុបកើន ៨១,៨% ធៀបនឹងខែមុន (ធ្លាក់ចុះ ៣០,៦% ធៀបនឹងឆ្នាំមុន) ដល់ ៣១៥ ពាន់លានរៀល។ ចំណាយលើឧបត្ថម្ភធន និងជំនួយសង្គមកើន ១៨% ធៀបនឹងខែមុន (២៥,៧% ធៀបនឹងមួយឆ្នាំមុន) ដល់ ៧១,១ ពាន់លានរៀល។ ចំណាយលើរៀបចំរូបវន្តកើន ១៣៨,៨% ធៀបនឹងខែមុន (ធ្លាក់ចុះ ៣៣,៩% ធៀបនឹងឆ្នាំមុន) ដល់ ១៧០,២ ពាន់លានរៀល ហើយចំណាយលើសេវាកម្មផ្សេងៗកើន ៧៦,៧% ដល់ ៧៣,៦ ពាន់លានរៀល ប៉ុន្តែធ្លាក់ចុះ ៤៧,២% បើធៀបនឹងឆ្នាំមុន។

នៅខែមីនា អង្ករថែមឡើងថ្លៃ ៦,៣% ធៀបនឹងខែមុន (០,៧% ធៀបនឹងមួយឆ្នាំមុន) ដល់ ៧១៣,៧ ដុល្លារ/តោន។ កៅស៊ូធ្លាក់ថ្លៃ ០,៤% ធៀបនឹងខែមុន (១៧,៧% ធៀបនឹងឆ្នាំមុន) មកត្រឹម ២៧៩១ ដុល្លារ/តោន ឯម្សៅដំឡូងឈើឡើងថ្លៃ ០,៩% (ធ្លាក់ថ្លៃ ១២,៥% បើធៀបនឹងឆ្នាំមុន) ដល់ ៣០៨,៨ ដុល្លារ/តោន។ នៅខែដដែល អង្កររៀតពណ្យធ្លាក់ថ្លៃ ០,៩% ធៀបនឹងខែមុន (៥,៦% ធៀបនឹងឆ្នាំមុន) មកត្រឹម ៤៣៦,២ ដុល្លារ/តោន, កៅស៊ូធ្លាក់ថ្លៃ ៥,៨% (២១,៦% ធៀបនឹងឆ្នាំមុន) មកត្រឹម ២៥៨០ ដុល្លារ/តោន ឯគ្រាប់ស្វាយចន្ទីឡើងថ្លៃ ៧,៨% (ធ្លាក់ថ្លៃ ៤,២% ធៀបនឹងឆ្នាំមុន) ដល់ ៦៤៦៦,៧ ដុល្លារ/តោន។

នៅខែមីនា ការនាំចេញអង្ករថែមកើន ១៨,៩% ធៀបនឹងខែមុន (២២,៩% ធៀបនឹងមួយឆ្នាំមុន) ដល់ ៣៧៩,៦ លានដុល្លារ ហើយការនាំចេញម្សៅដំឡូងឈើកើន ១៤,៥% (១០១,១% ធៀបនឹងឆ្នាំមុន) ដល់ ២៤៦,១ លានដុល្លារ។ ការនាំចេញកៅស៊ូធម្មជាតិ និងជំរុយធម្មជាតិកើន ១,២% ធៀបនឹងខែមុន ដល់ ៨០១,៤ លានដុល្លារ ប៉ុន្តែធ្លាក់ចុះ ១១,១% ធៀបនឹងឆ្នាំមុន។ ក្នុងខែនេះដែរ ការនាំចេញអង្កររៀតពណ្យកើន ៩០,៣% (១,២% ធៀបនឹងឆ្នាំមុន) ដល់ ៣៣៥ លានដុល្លារ ហើយការនាំចេញគ្រាប់ស្វាយចន្ទីកើន ១៣១% (៣៤,៩% ធៀបនឹងឆ្នាំមុន) ដល់ ៩៧ លានដុល្លារ។ ការនាំចេញកៅស៊ូធ្លាក់ចុះ ៥,៨% (៤៥,១% ធៀបនឹងឆ្នាំមុន) មកត្រឹម ១២៩ លានដុល្លារ។

នៅខែមីនា ការនាំចេញនៅសហរដ្ឋអាមេរិកធ្លាក់ចុះ ១,៤% ធៀបនឹងខែមុន (២,២% ធៀបនឹងមួយឆ្នាំមុន) មកត្រឹម ១៨៤,៣ ពាន់លានដុល្លារ។ ការនាំចេញនៅតំបន់អឺរ៉ុបកើន ០,២% (២,០% ធៀបនឹងឆ្នាំមុន) ដល់ ២០៩,៦ ពាន់លានដុល្លារ។ ការនាំចេញនៅជប៉ុនកើន ១៥,៥% (ធ្លាក់ចុះ ១២,៩% ធៀបនឹងឆ្នាំមុន) ដល់ ៦៦,៦ ពាន់លានដុល្លារ។ ការនាំចេញនៅម៉ាឡេស៊ីកើន ៨,៧% (២,៨% ធៀបនឹងឆ្នាំមុន) ដល់ ២០,៨ ពាន់លានដុល្លារ ឯការនាំចូលកើន ១០,៩% (២,៩% ធៀបនឹងឆ្នាំមុន) ដល់ ១៧,៣ ពាន់លានដុល្លារ។ អតិរេកពាណិជ្ជកម្មរបស់ម៉ាឡេស៊ីថយចុះ ១,២% ប៉ុន្តែកើន ២,៣% បើធៀបនឹងឆ្នាំមុន។

នៅខែមេសា អង្ករ USA 2/4 ឡើងថ្លៃ ០,៨% ធៀបនឹងខែមុន (២៦,៣% ធៀបនឹងមួយឆ្នាំមុន) ដល់ ៦៤៩ ដុល្លារ/តោន។ អង្ករ Thai 100% B ធ្លាក់ថ្លៃ ១,៩% (៦,៩% ធៀបនឹងឆ្នាំមុន) មកត្រឹម ៥៦៦ ដុល្លារ/តោន។ សណ្តែកសៀង (US No. 1) ធ្លាក់ថ្លៃ ០,៩% មកត្រឹម ៥៥៦,៥ ដុល្លារ/តោន ប៉ុន្តែនៅថែមបើធៀបនឹងមួយឆ្នាំមុន។ ពោត (US No. 2) ធ្លាក់ថ្លៃ ៩,៤% (ឡើងថ្លៃ ២,១% ធៀបនឹងឆ្នាំមុន) មកត្រឹម ២៧៨,៩ ដុល្លារ/តោន។ កៅស៊ូធ្លាក់ថ្លៃ ១០,៨% (៣១,៣% ធៀបនឹងឆ្នាំមុន) មកត្រឹម ២៥៥១,៧ ដុល្លារ/តោន។ ប្រេងឆៅ (OPEC spot) ធ្លាក់ថ្លៃ ៥,០% (១៤,៥% ធៀបនឹងឆ្នាំមុន) មកត្រឹម ១០១,១ ដុល្លារ/ធុង, សាំង (US Gulf Coast) ធ្លាក់ថ្លៃ ៧,៤% (១៣,៧% ធៀបនឹងឆ្នាំមុន) មកត្រឹម ០,៧១ ដុល្លារ/លីត្រ ហើយប្រេងម៉ាស៊ូត (low sulphur No. 2) ធ្លាក់ថ្លៃ ៤,៣% (១០,៥% ធៀបនឹងឆ្នាំមុន) មកត្រឹម ០,៧៦ ដុល្លារ/លីត្រ។

by 21.3 percent year on year. In the same month, total current expenditure went up 81.8 percent from the preceding month, but decreased by 30.6 percent year on year to KHR315 bn. Expenditure on subsidies and social assistance increased by 18 percent from a month earlier (25.7 percent year on year) to KHR71.1 bn. Expenditure on wages increased by 138.8 percent from the previous month (33.9 percent drop year on year) to KHR170.2 bn and other services by 76.7 percent to KHR73.6 bn, but year on year declined by 47.2 percent.

In March, the price of Thai rice increased by 6.3 percent from a month earlier (0.7 percent year on year) to USD713.7/tonne. The price of rubber declined by 0.4 percent from the preceding month (17.7 percent year on year) to USD2791/tonne. The price of tapioca went up 0.9 percent to USD308.8/tonne, but year on year dropped by 12.5 percent. In the same month, the price of Vietnamese rice decreased by 0.9 percent from a month earlier (5.6 percent year on year) to USD436.2/tonne, of rubber by 5.8 percent (21.6 percent year on year) to USD2580/tonne. The price of cashew nuts increased by 7.8 percent from a month earlier to USD6466.7/tonne, but year on year declined by 4.2 percent.

Exports of Thai rice in March went up 18.9 percent from the preceding month (22.9 percent year on year) to USD379.6 m and of tapioca by 14.5 percent (101.1 percent year on year) to USD246.1 m. Exports of natural rubber and similar natural gums rose by 1.2 percent from the previous month to USD801.4 m, but year on year dropped by 11.1 percent. In the same month, exports of Vietnamese rice rose by 90.3 percent from a month earlier (1.2 percent year on year) to USD335 m and of cashew nuts by 131 percent (34.9 percent decrease year on year) to USD97 m. Exports of rubber declined by 5.8 percent from the previous month (45.1 percent year on year) to USD129 m.

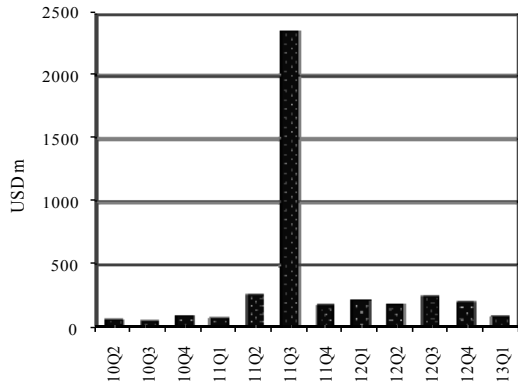
In March, US exports dropped by 1.4 percent from a month earlier (2.2 percent year on year) to USD184.3 bn. Exports of the euro zone increased by 0.2 percent from the preceding month (2.0 percent year on year) to USD209.6 bn. Japanese exports went up 15.5 percent from the preceding month to USD66.6 bn, but year on year dropped by 12.9 percent. In March, Malaysian exports increased by 8.7 percent from a month earlier (2.8 percent year on year) to USD20.8 bn. Imports went up 10.9 percent from the previous month (2.9 percent year on year) to USD17.3 bn. The trade surplus decreased by 1.2 percent from the previous month, but year on year rose by 2.3 percent.

In April, the price of USA 2/4 rice went up 0.8 percent from the preceding month (26.3 percent year on year) to USD649/tonne. The price of Thai 100 percent B rice dropped by 1.9 percent from the preceding month (6.9 percent year on year) to USD566/tonne. The price of soybeans (US No. 1) went down 0.9 percent from a month earlier to USD556.5/tonne, but year on year remained unchanged. The price of maize (US No. 2) declined by 9.4 percent (2.1 percent rise year on year) to USD278.9/tonne. The price of rubber declined 10.8 percent from the previous month (31.3 percent year on year) to USD2551.7/tonne. In April, the price of crude oil (OPEC spot) dropped by 5.0 percent from a month earlier (14.5 percent year on year) to USD101.1/barrel, of gasoline (US Gulf Coast) by 7.4 percent (13.7 percent year on year) to USD0.71/litre and of diesel fuel (low sulphur No. 2) by 4.3 percent (10.5 percent year on year) to USD0.76/litre.

សកម្មភាពសេដ្ឋកិច្ចសំខាន់ៗ និង ថ្លៃទំនិញនៅកម្ពុជា

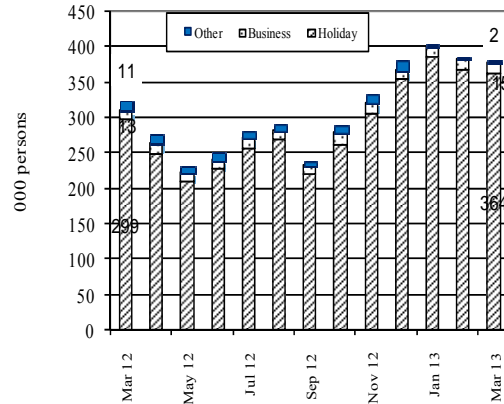
Main Economic Activities and Consumer Prices in Cambodia

Fixed Asset Investment Approvals by CDC*
Industry
2010 Q2–2013 Q1



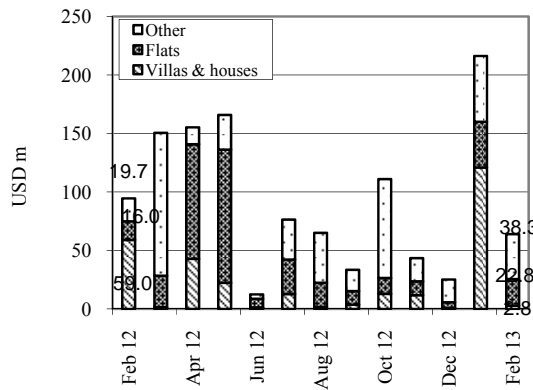
*Including expansion projects.
Source: Council for the Development of Cambodia

Foreign Visitor Arrivals
March 2012– March 2013



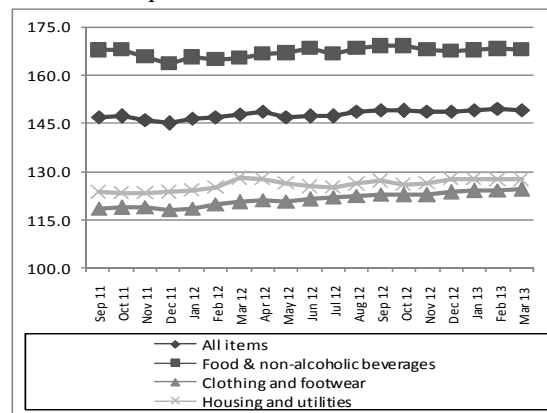
Source: Ministry of Tourism

Phnom Penh: Value of Construction Approvals
February 2012– February 2013



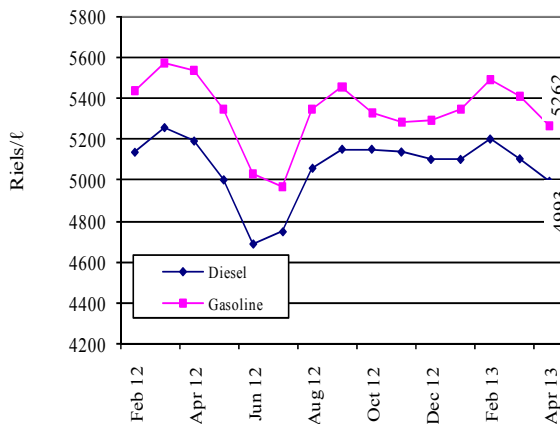
Source: Municipality of Phnom Penh

Consumer Price Index
(December 2006=100)
September 2011–March 2013



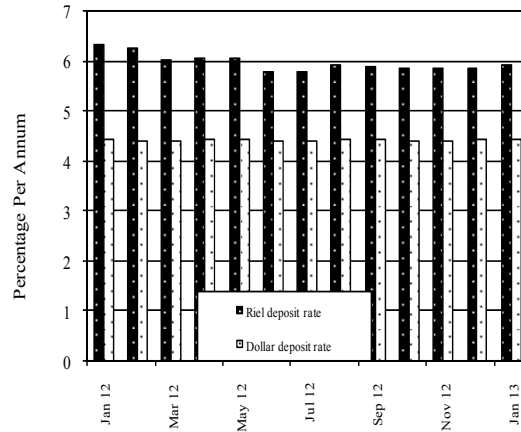
Source National Institute of Statistics

Phnom Penh: Gasoline & Diesel Prices
February 2012–April 2013



Source: CDRI

Interest Rates on 12-Month Bank Deposits
January 2012– January 2013

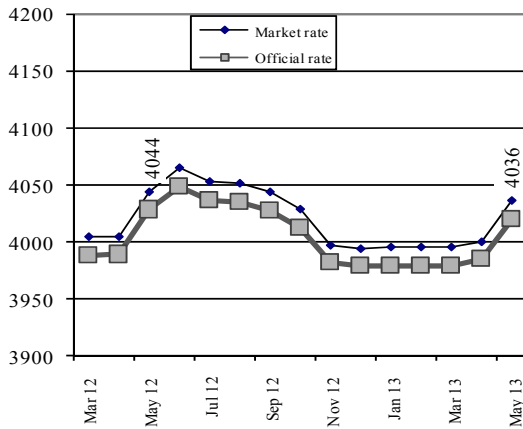


Source: Economic & Monetary Statistics, NBC

អត្រាប្តូររូបិយប័ណ្ណ និង ឥណទាន

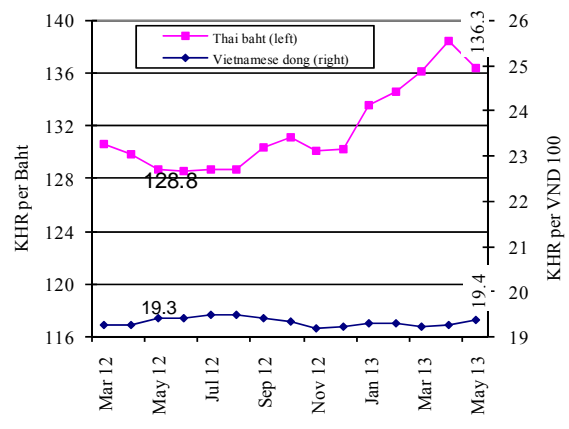
Exchange Rates, Money and Credit

Riels per US Dollar
March 2012–May 2013



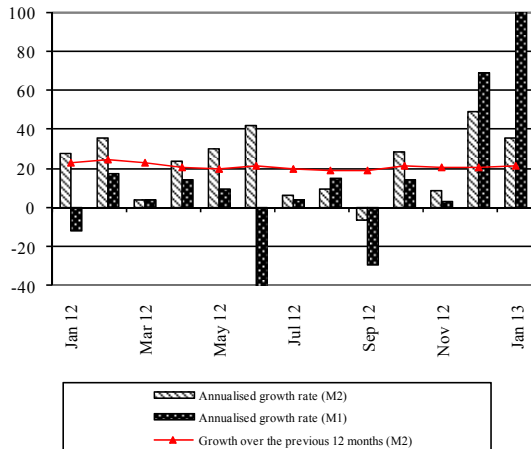
Source: National Bank of Cambodia

Riels per THB & VND
March 2012–May 2013



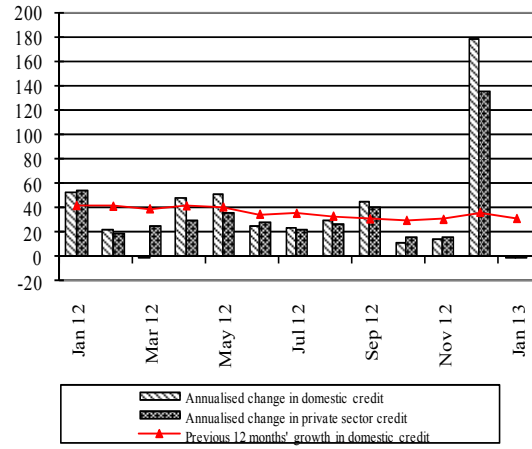
Source: National Bank of Cambodia

Monetary Survey (%)
January 2012– January 2013



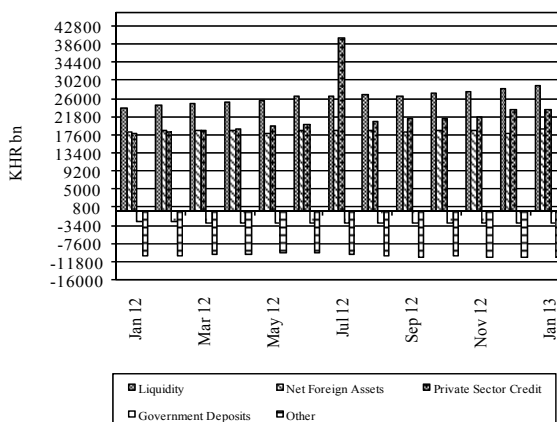
Source: National Bank of Cambodia

Domestic Credit (%)
January 2012– January 2013



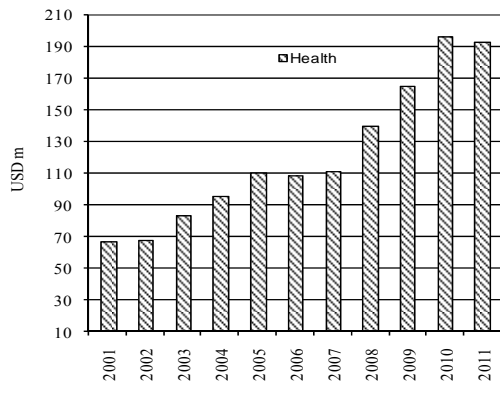
Source: National Bank of Cambodia

Monetary Survey
January 2012– January 2013



Source: National Bank of Cambodia

External Development Assistance Disbursement
Health
2001–11

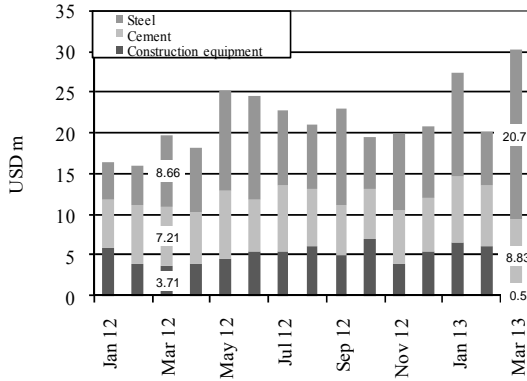


Source: The Cambodia Development Effectiveness Report 2011, CDC

ពាណិជ្ជកម្មក្រៅប្រទេស និង ការអនុវត្តថវិកាជាតិ

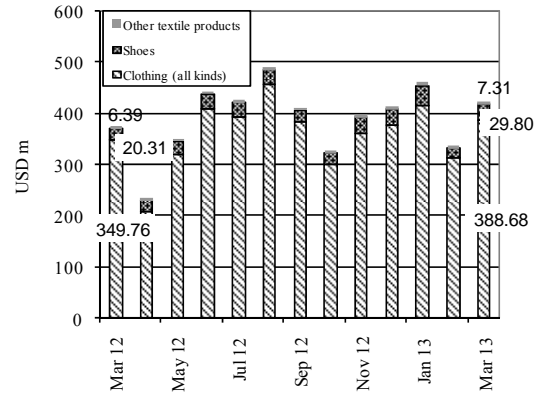
External Trade and National Budget Operations

Cambodian Imports
January 2012– March 2013



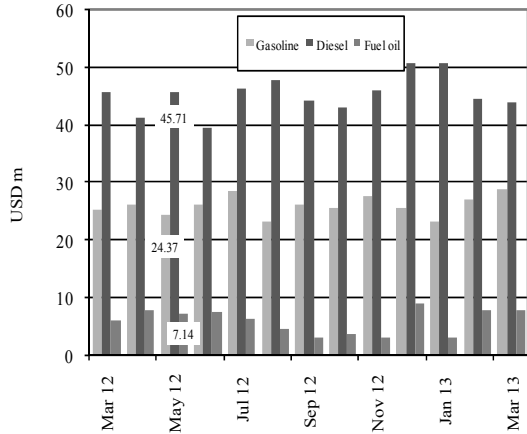
Source: Economic & Monetary Statistics, NBC

Cambodian Exports
March 2012– March 2013



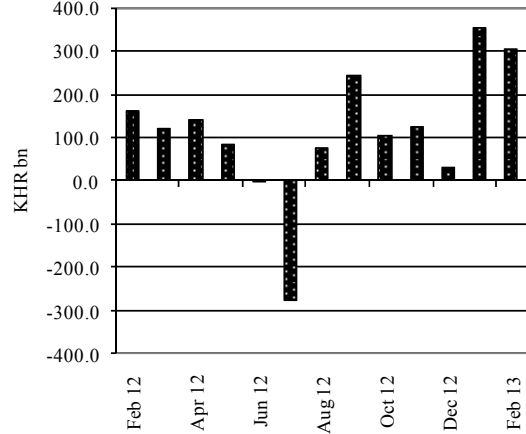
Source: Economic & Monetary Statistics, NBC

Imports: Energy
March 2012– March 2013



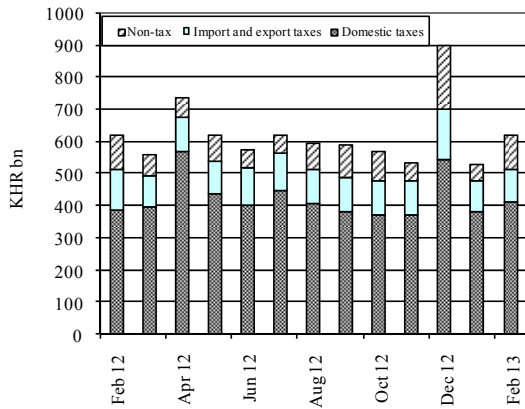
Source: Economic & Monetary Statistics, NBC

Current Budget Balance
February 2012– February 2013



Source: MEF Bulletin

Current Budget Revenue
February 2012– February 2013



Source: MEF Bulletin

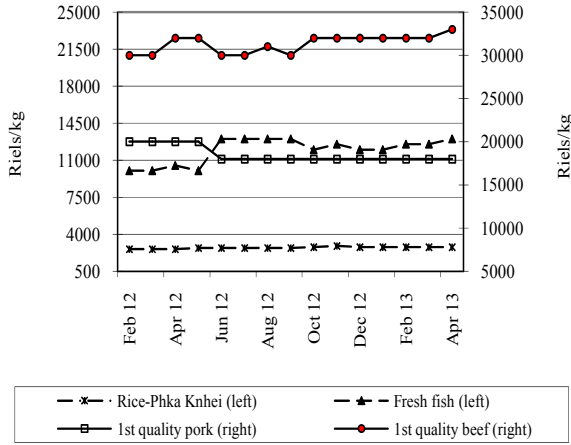
Current Budget Expenditure
February 2012– February 2013



Source: MEF Bulletin

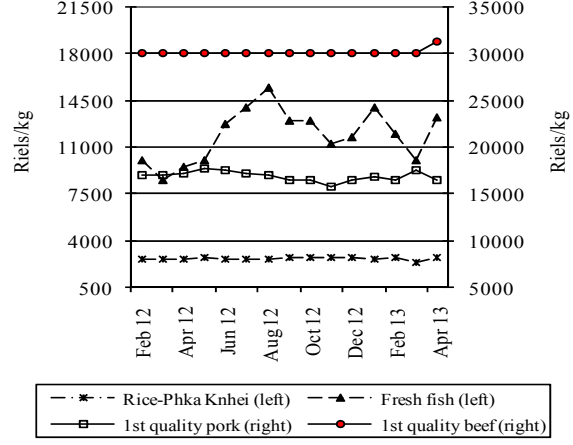
ផ្លូវស្បៀងអាហារតាមខេត្តក្នុងប្រទេសកម្ពុជា
Provincial Food Prices

Food Prices in Siem Reap Province
 February 2012–April 2013



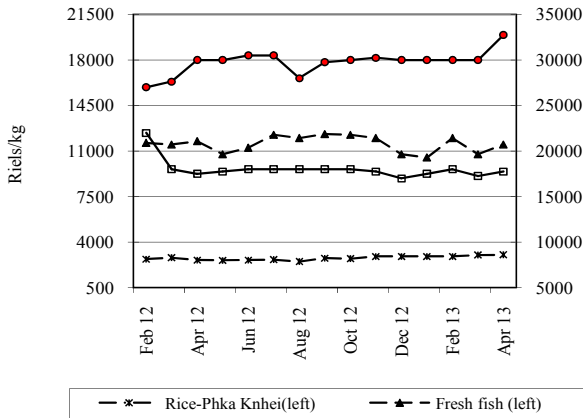
Source: CDRI

Food Prices in Battambang Province
 February 2012–April 2013



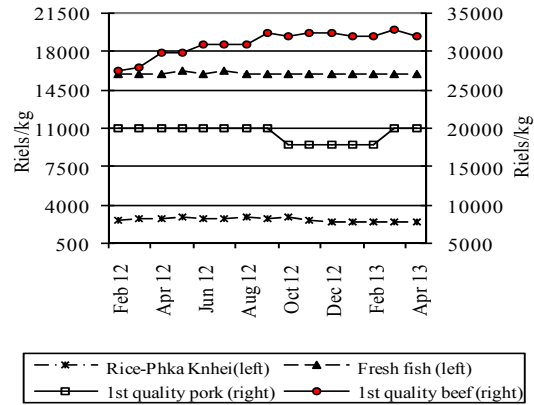
Source: CDRI

Food Prices in Kompong Cham Province
 February 2012–April 2013



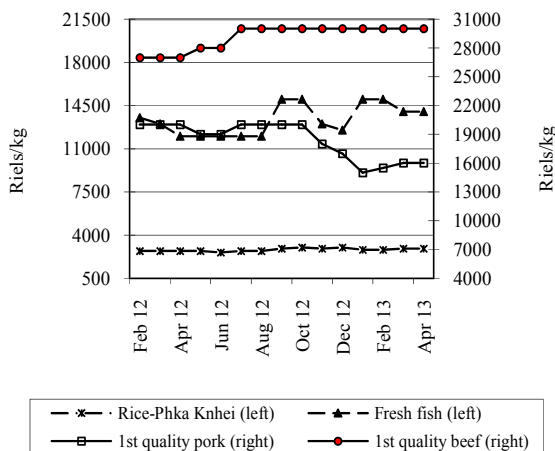
Source: CDRI

Food Prices in Kampot Province
 February 2012–April 2013



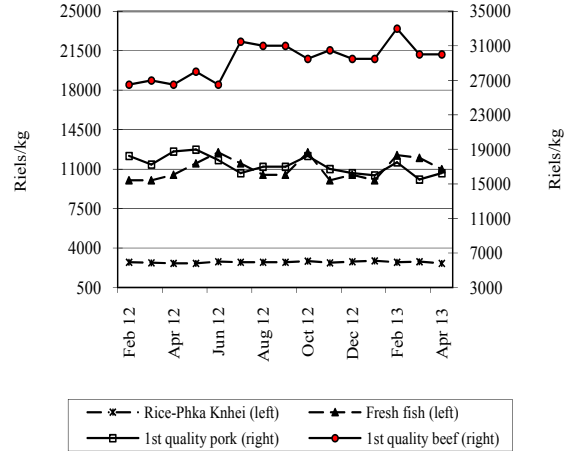
Source: CDRI

Food Prices in Svay Rieng Province
 February 2012–April 2013



Source: CDRI

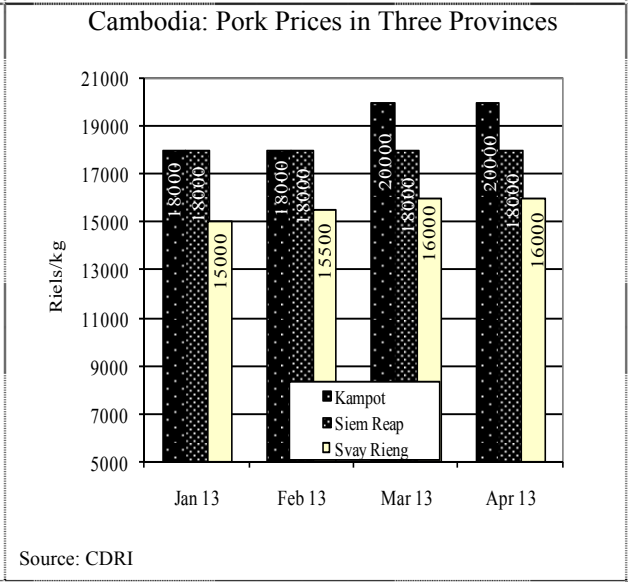
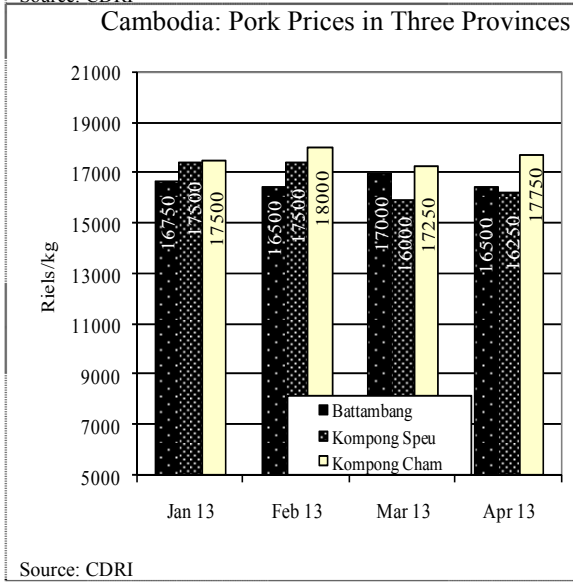
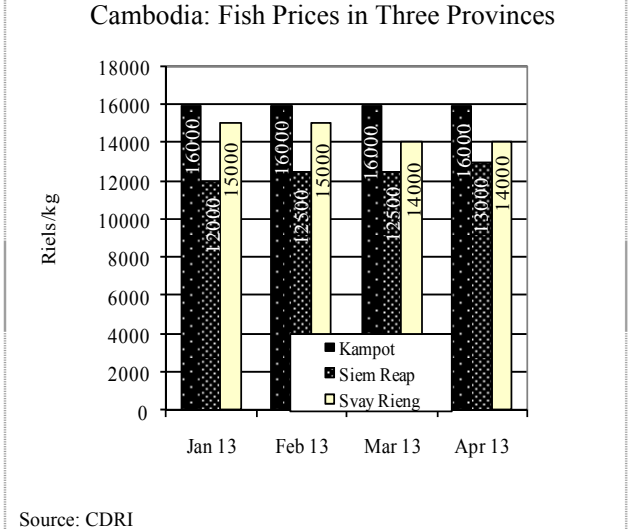
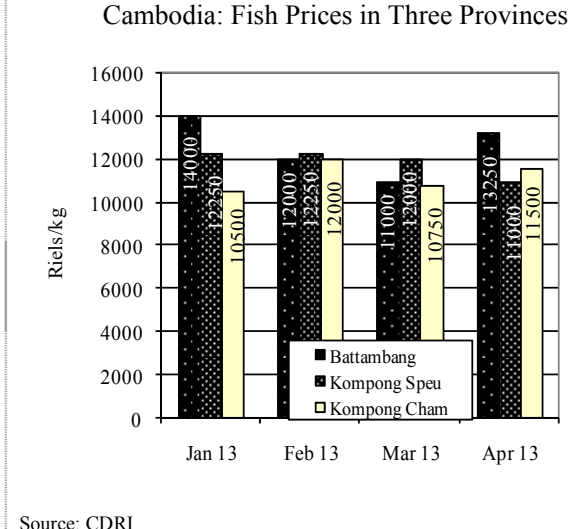
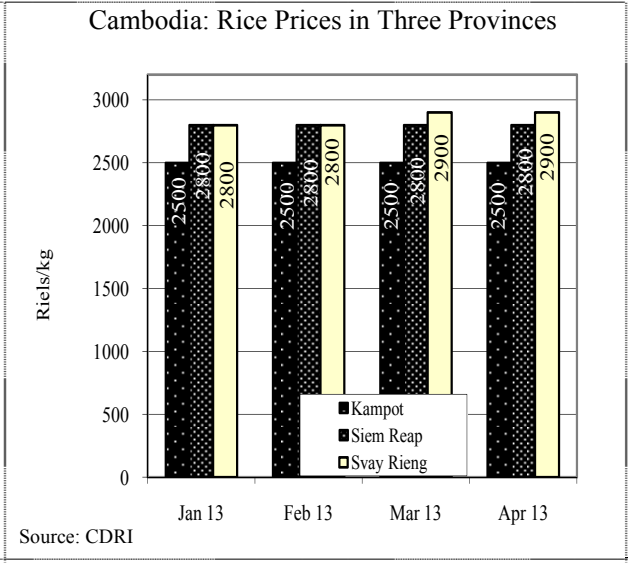
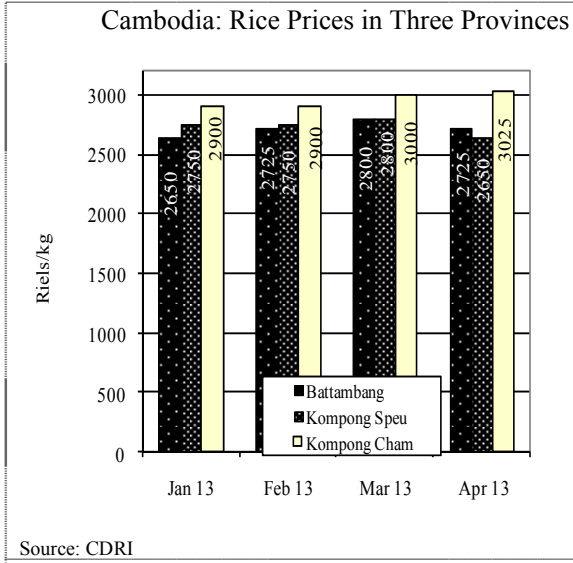
Food Prices in Kompong Speu Province
 February 2012–April 2013



Source: CDRI

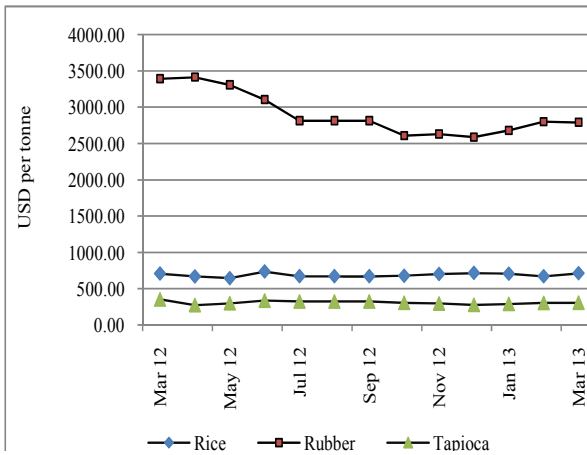
ផ្លូវដំណើរការតាមខេត្តក្នុងប្រទេសកម្ពុជា៖ តាមមូលដ្ឋានភូមិភាគ

Provincial Goods Prices in Cambodia



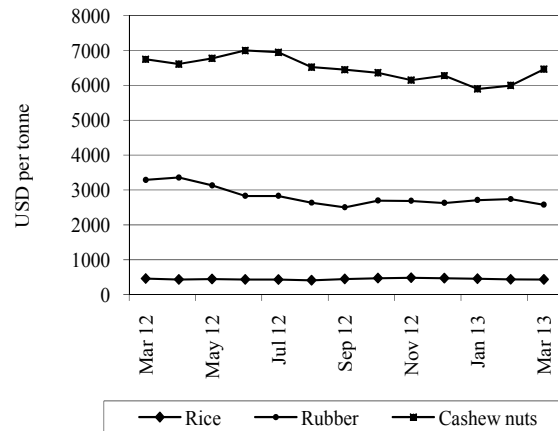
ផ្លែផ្សិត ការនាំចេញ និង ចំនួនទេសចរអន្តរជាតិទៅដល់ប្រទេសជាដៃគូរបស់កម្ពុជា
Goods Prices, Exports and International Tourist Arrivals to Partners of Cambodia

Thailand: Prices of Rubber, Rice and Tapioca
 March 2012– March 2013



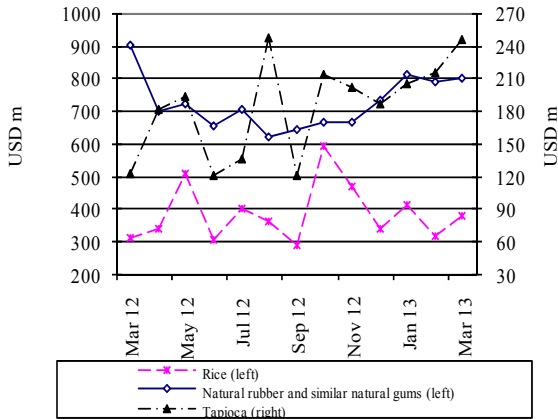
Source: Bank of Thailand, *Foreign Trade and Balance of Payments*

Vietnam: Prices of Rubber, Rice and Cashew Nuts
 March 2012– March 2013



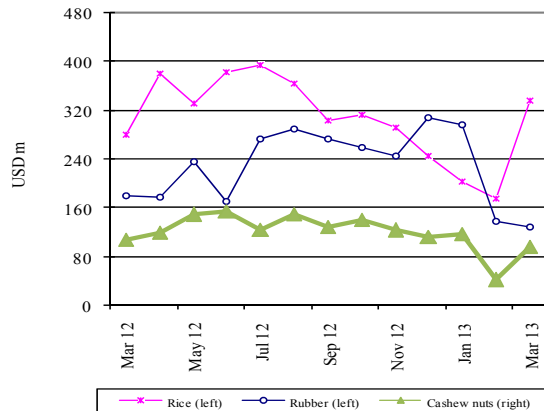
Source: General Statistics Office of Vietnam

Thailand: Exports
 March 2012– March 2013



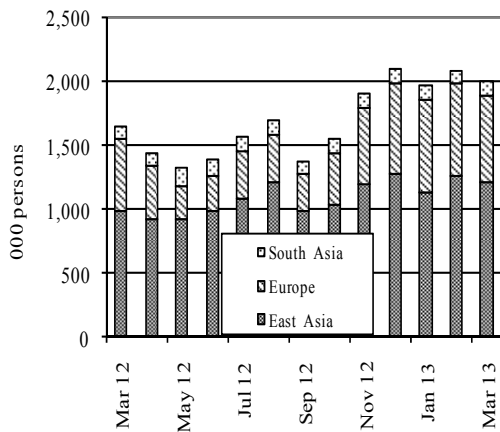
Source: Customs Department of Thailand

Vietnam: Exports
 March 2012– March 2013



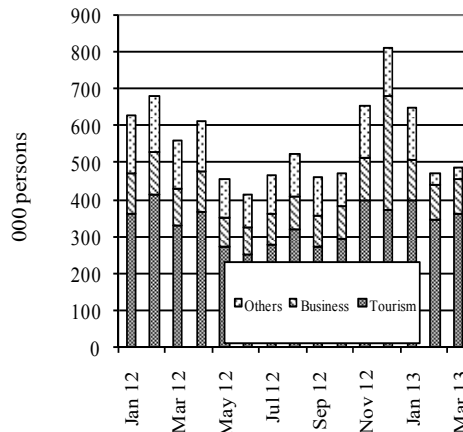
Source: General Statistics Office of Vietnam

Thailand: International Arrivals
 March 2012– March 2013



Source: Thailand Office of Tourism Development

Vietnam: International Arrivals
 January 2012–March 2013

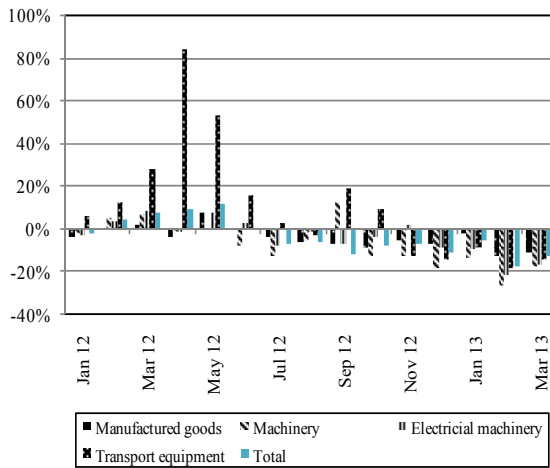


Source: Estimates by General Statistics Office of Vietnam

សកម្មភាពសេដ្ឋកិច្ច និង អត្រាអតិថិជនលើបណ្តាប្រទេសជាដៃគូរបស់កម្ពុជា

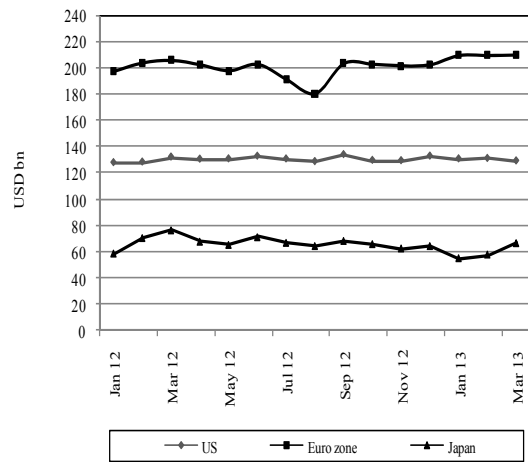
Economic Activity and Inflation Rates of Selected Economic Partners of Cambodia

Year-on-Year Growth of Main Exports: Japan
January 2012– March 2013



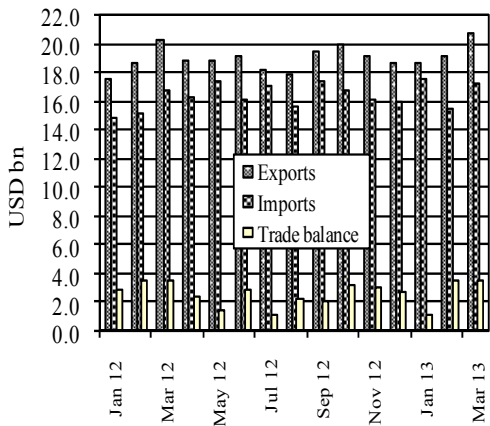
Source: Japanese Trade and Investment Statistics

Goods Exports: US, Euro Zone & Japan
January 2012– March 2013



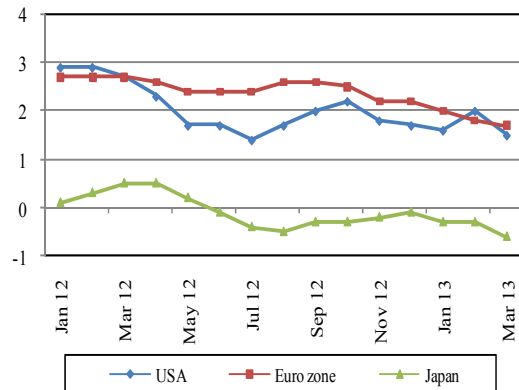
Sources: BEA, Eurostat and OECD

External Trade: Malaysia
January 2012– March 2013



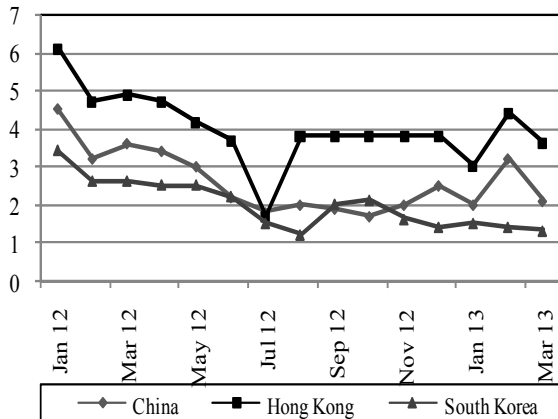
Source: Ministry of International Trade and Industry, Malaysia

Inflation Rates: US, Euro Zone & Japan
(percent price change from a year earlier)
January 2012–March 2013



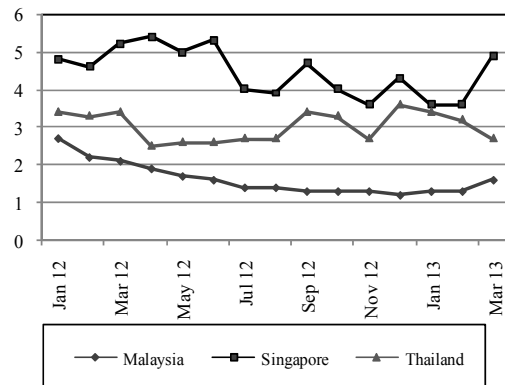
Sources: IMF and Economist (20 April 2013)

Inflation Rates: China, Hong Kong & South Korea
(percent price change from a year earlier)
January 2012–March 2013



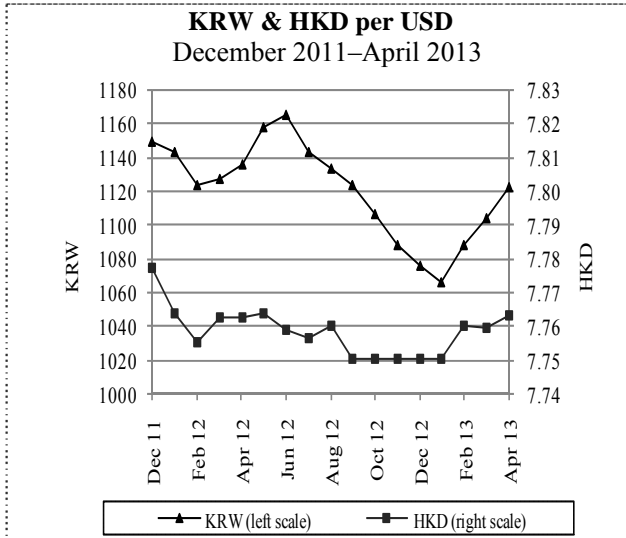
Sources: IMF and Economist (20 April 2013)

Inflation Rates: Selected ASEAN Countries
(percent price change from a year earlier)
January 2012–March 2013

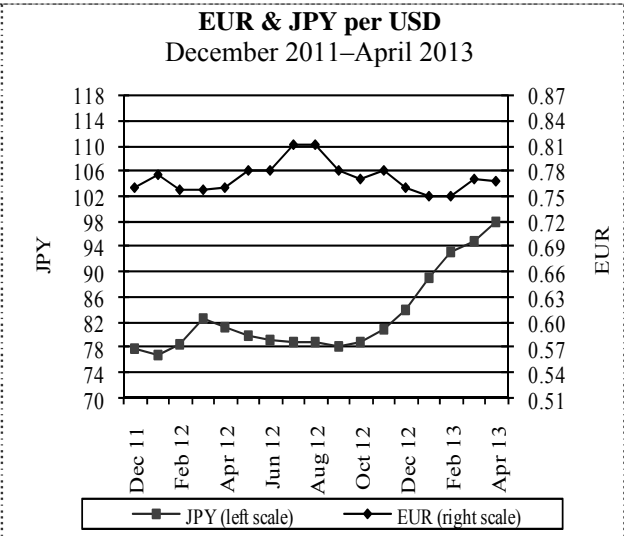


Sources: IMF and Economist (20 April 2013)

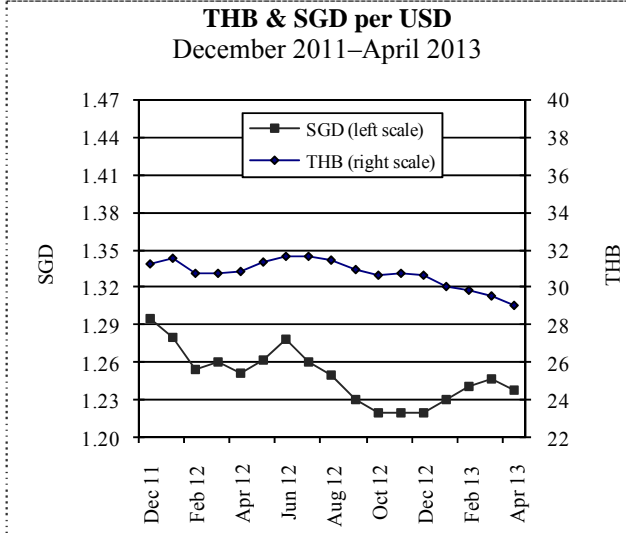
អត្រាប្តូរប្រាក់ និង ស្ថានភាពផ្ទៃដីនិព្វានលើទីផ្សារអន្តរជាតិ
Exchange Rates and Commodity Prices in World Markets



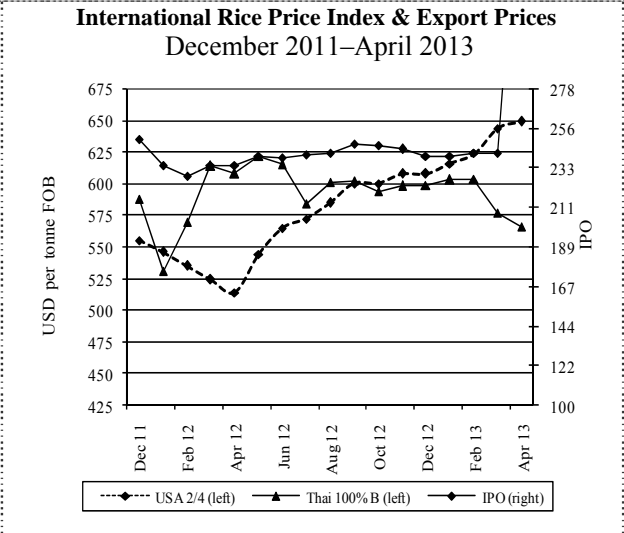
Source: Federal Reserve Bank of New York



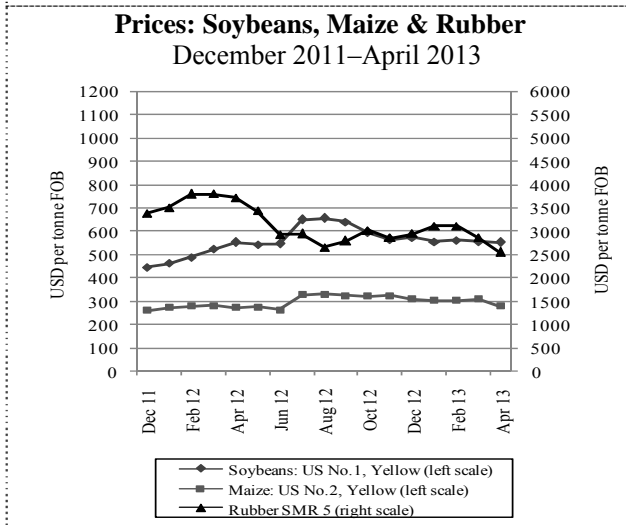
Source: Federal Reserve Bank of New York



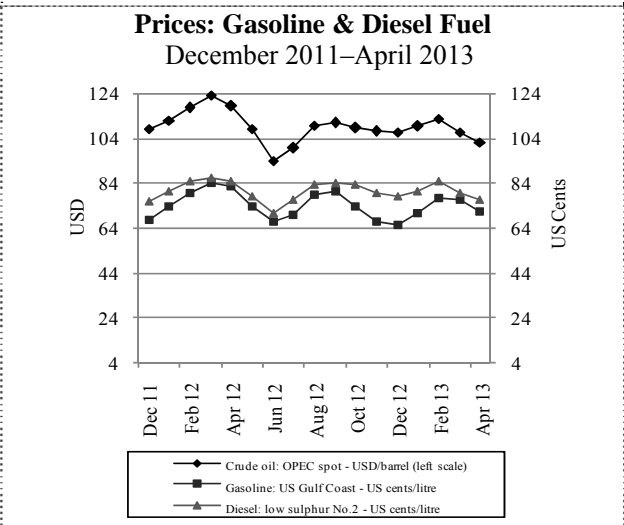
Source: Federal Reserve Bank of New York



Sources: Osiriz/InfoArroz



Source: Food and Agriculture Organisation



Source: US Energy Information Administration

ព័ត៌មានសេដ្ឋកិច្ច
Economic News

ព័ត៌មានសេដ្ឋកិច្ចសំខាន់

វិនិយោគគិតជាទ្រព្យសកម្មជាប់លាប់សរុប ធ្លាក់ចុះ ៤៧,៤% នៅ ត្រីមាសទី១ ឆ្នាំ២០១៣

វិនិយោគគិតជាទ្រព្យសកម្មជាប់លាប់សរុប អនុម័តដោយក្រុមប្រឹក្សា អភិវឌ្ឍន៍កម្ពុជា បានធ្លាក់ចុះ ៤៧,៤% មកត្រឹម ២១៨,៨លានដុល្លារ នៅត្រីមាសទី១ ឆ្នាំ២០១៣ បើធៀបនឹងត្រីមាសដូចគ្នាឆ្នាំមុន។

ការអនុម័តទាំងនេះបានធ្វើឡើងក្នុងអនុវិស័យជាច្រើន រួមមាន អនុវិស័យ កាត់ដេរ (៥៩,១% នៃគម្រោងបានអនុម័តសរុប), ស្បែកជើង (៩,០%), ឧស្សាហកម្មធីមី និងឱសថ (២,៣%), ការកែច្នៃឈើ (២,៣%), វិស្វកម្ម (៦,៨%), សំណង់ (២,៣%), កសិឧស្សាហកម្ម (២,៣%) និង អនុវិស័យ ផ្សេងទៀត (១៥,៩%)។

វិនិយោគក្នុងស្រុករួមចំណែកបានត្រឹមតែ ៦,៨% នៃគម្រោងអនុម័តសរុប ប៉ុណ្ណោះ។ ប្រទេសចិននៅតែជាវិនិយោគិនបរទេសចម្បងគេនៅកម្ពុជា ដោយមាន ១៤ គម្រោងវិនិយោគ (៣១,៨% នៃចំនួនគម្រោងសរុប) មានតម្លៃ ៦៨,៤លានដុល្លារ (៣១,៣% នៃតម្លៃគម្រោងអនុម័តសរុប)។ វិនិយោគិនចម្បងផ្សេងទៀត រួមមាន ប្រទេសអង់គ្លេស ហុងកុង និង កូរ៉េខាងត្បូង។

គួរកត់សម្គាល់ថា វិនិយោគក្នុងឆ្នាំ២០១២ ធ្លាក់ចុះ ៦៧,៥% បើធៀបនឹង ឆ្នាំ២០១១ មកត្រឹម ២,៣ពាន់លានដុល្លារ។ គេមិនសូវមានសុទិដ្ឋិនិយម ទេអំពីនិន្នាការក្នុងឆ្នាំនេះ ហើយវាជាបញ្ហាប្រឈមមួយចំពោះរដ្ឋាភិបាល ក្នុងការទាក់ទាញវិនិយោគបន្ថែមពីបរទេស និងក្នុងស្រុក ដើម្បីសម្រេច បានតាមការរំពឹងទុកនូវកំណើនសេដ្ឋកិច្ចប្រហែល ៧%។

Economic News Highlights

Total fixed asset investments decline 47.4 percent in first three months of year

Total fixed asset investments approved by the Council for the Development of Cambodia dropped by 47.4 percent in the first three months of 2013 compared to the same period last year, to USD218.8 m.

The approvals were made in garments (59.1 percent of the total approved projects), shoes (9.0 percent), medical and chemical industries (2.3 percent), wood processing (2.3 percent), engineering (6.8 percent), construction (2.3 percent), agro-industry (2.3 percent) and other (15.9 percent).

Domestic investments accounted for only 6.8 percent of the total projects approved. China continued to be the main foreign investor with 14 projects (31.8 percent of the total) worth USD68.4 m (31.3 percent of the total). Other major investors included the United Kingdom, Hong Kong and South Korea.

In 2012 investment declined 67.5 percent from the preceding year to USD2.3 bn. The trend is not optimistic this year, presenting a challenge for the government to attract more domestic and foreign investment to achieve the expected economic growth of about 7 percent.

Links to others economic news

1. “Cambodia's insurance revenues rise by 30 pct in Q1” (http://news.xinhuanet.com/english/business/2013-05/22/c_132401041.htm)
2. “Cambodia launches cassava development project under China, UNDP support” (http://news.xinhuanet.com/english/china/2013-05/21/c_132397799.htm)
3. “Cambodia-Japan trade volume up 14% in 3 months” (http://news.xinhuanet.com/english/business/2013-05/14/c_132381154.htm)